



Tewksbury Rail Trail Feasibility Study

Tewksbury, MA
July 14, 2015

Prepared by: Fay, Spofford & Thorndike (FST)
& Tewksbury Rail Trails

Tewksbury Rail Trail Update

- May 2013
 - Town Meeting voted CPA funds for Feasibility Study
- September 2014
 - Partner w/ Design Consultant (FST)
- December 2014
 - Open House soliciting input
- March 2015
 - Public Info meeting

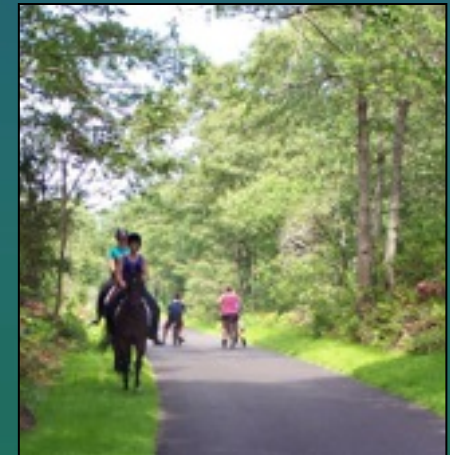


Who is FST?

- Full-service, multi-disciplined firm
- Recognized leader in trail projects
 - Over **500** miles of bike trails presently in planning, design, or construction
- Completed award-winning trail facilities



Nashua River Rail Trail



Cape Cod Rail Trail



Tewksbury Rail Trail
Feasibility Study



Study Goals

- Determine feasibility of constructing a multi-use trail connecting the center of Town w/ green spaces and neighboring towns
- Identify key implementation activities

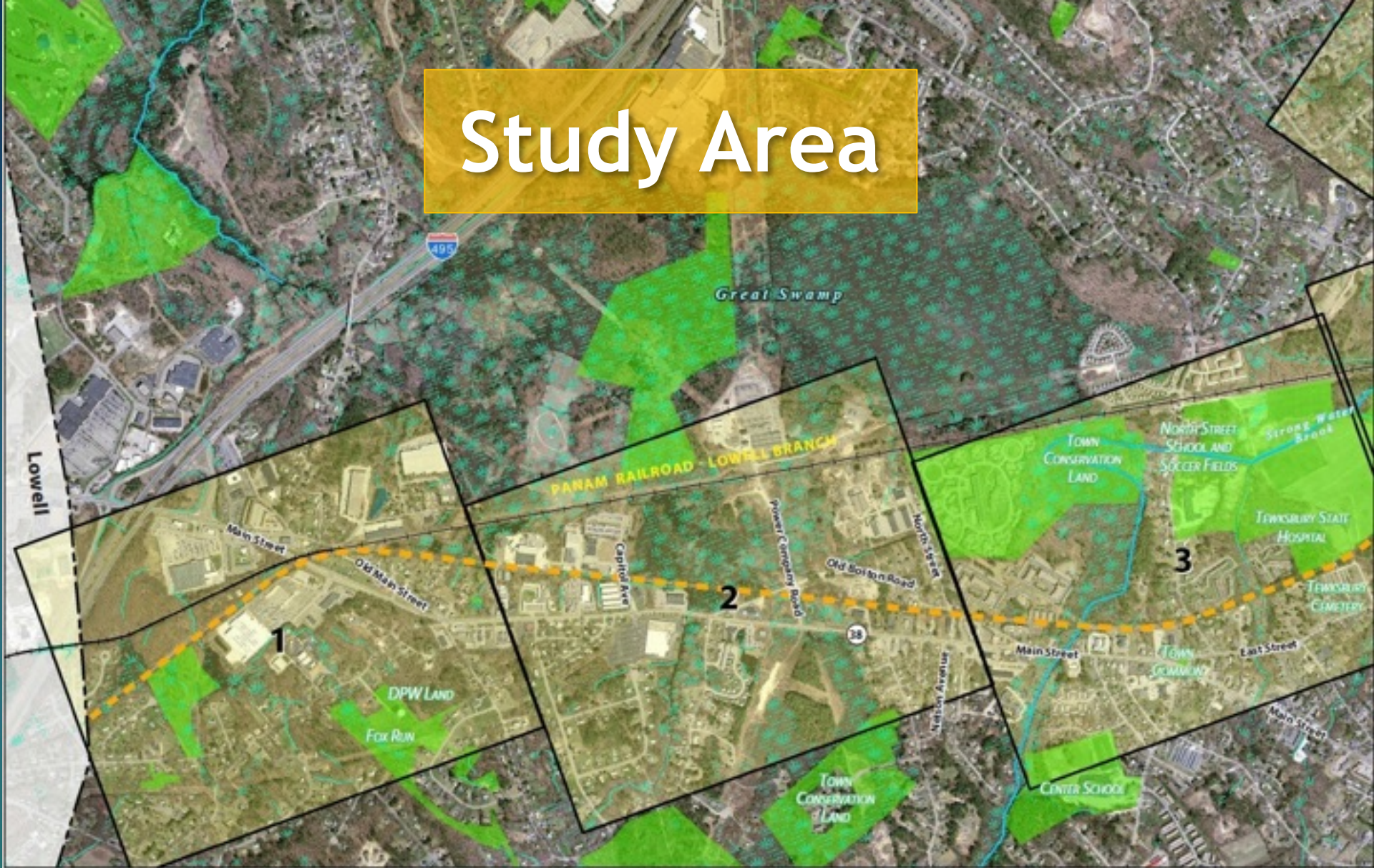


Study Process

- 1) Evaluated existing site conditions
- 2) Attended coordination meetings
- 3) Developed concept plan



Study Area



Tewksbury Rail Trail
Feasibility Study



Study Area

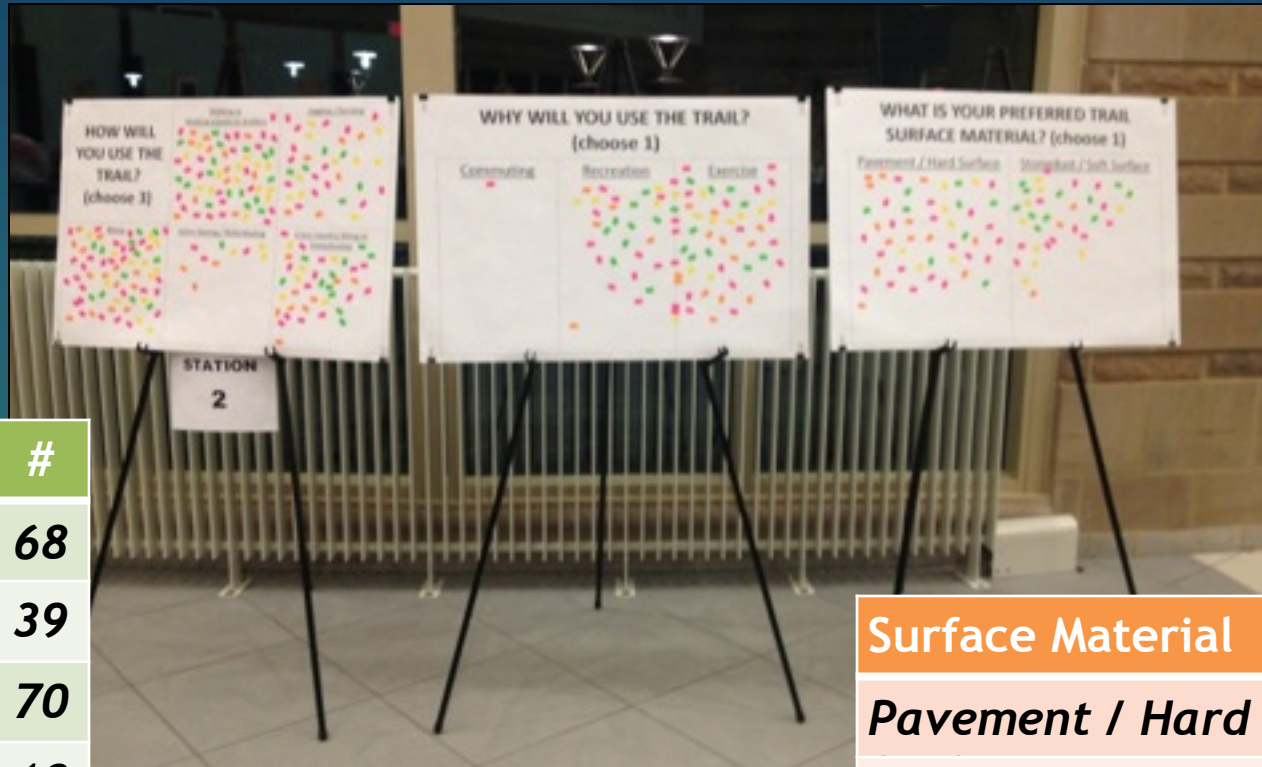


Coordination Meetings

- TRT Committee
- Community Open House
- Town Departments
- Key Abutters (i.e. State Hospital, Cemetery, etc.)



Community Open House



Trail Use	#
<i>Walking</i>	68
<i>Jog/Run</i>	39
<i>Biking</i>	70
<i>Inline</i>	10
<i>Snowshoeing</i>	40

Surface Material	#
<i>Pavement / Hard</i>	50
<i>Stonedust / Soft</i>	36



Tewksbury Rail Trail
Feasibility Study



Concept Plan

- Trail design
- Parking and access
- At-grade crossings
- On-road alternatives
- Mitigation measures



Shared-Use Trail

Capitol Ave. to Senior Center

- Proposed Concept Design:
 - 10 foot paved surface width
 - Length = 1.75 miles
 - Five road crossings
 - Attractive to all ages and skill levels



Pavement / Hard Surface



Shared-Use Trail Terminus

Senior Center



Tewksbury Rail Trail
Feasibility Study



Greenway Trail

Maple Street / East Street to South Street



Stonedust / Soft Surface

- Proposed Concept Design:
 - Greenway Trail
 - Potentially formalizing existing trail systems
 - Five potential road crossings
 - Developing maps and marker system for public use



Tewksbury Rail Trail
Feasibility Study





POTENTIAL PARKING / TRAILHEAD



Andover

Leighton Ln

TOWN
CONSERVATION
LAND

William G Drive

Bonnie Ln

Heather Row

FUTURE
CONNECTION TO
HAGGETT'S POND
FORMALIZING
EXISTING TRAILS

Bligh Street

POINT LEWIS
CONSERVATION
LAND

TEWKSBURY
STATE
HOSPITAL

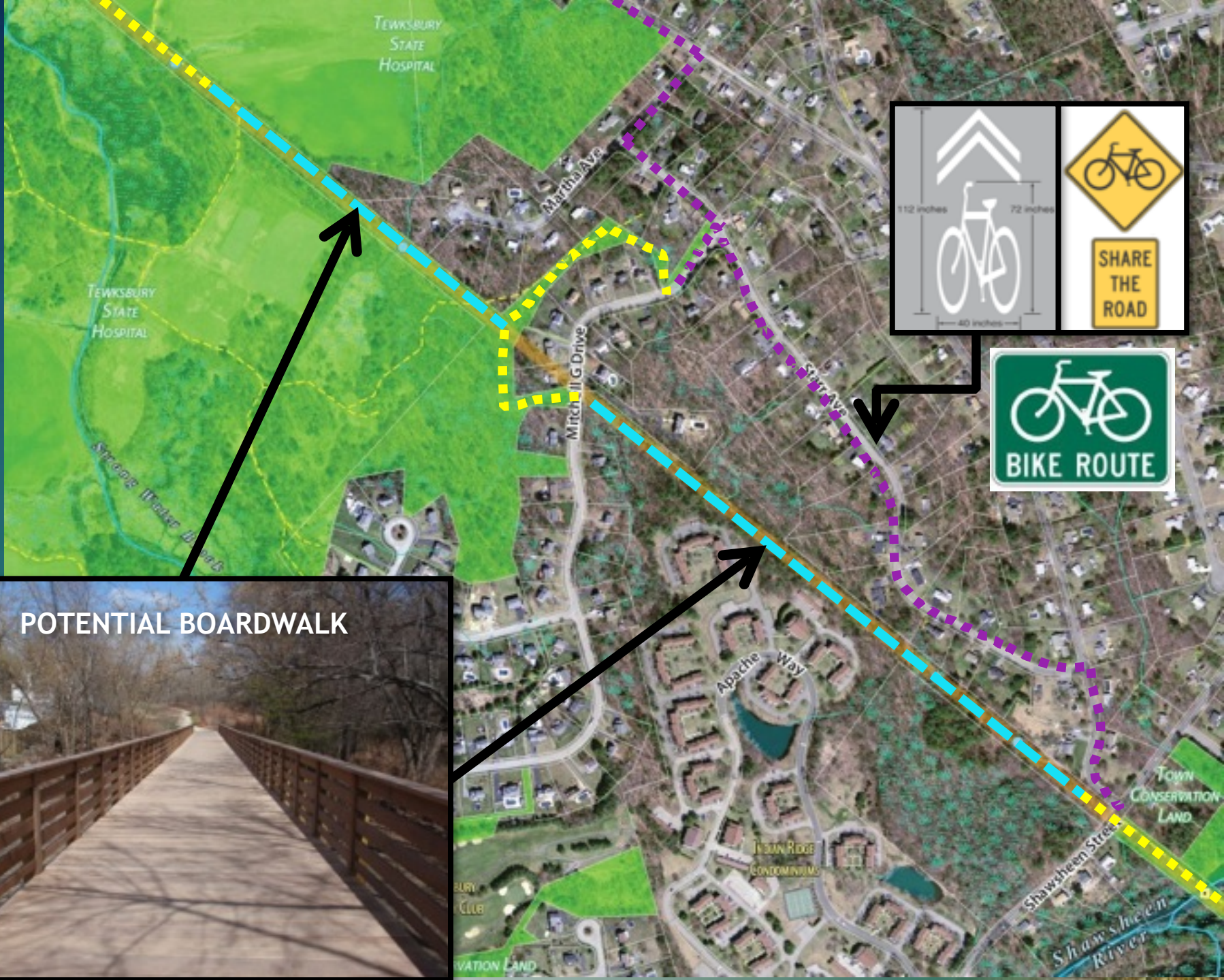
TEWKSBURY
STATE
HOSPITAL

Lancaster Drive

Lynnes
Way

Pinnacle Street

TEWKSBURY



TEWKSBURY
STATE
HOSPITAL

TEWKSBURY
STATE
HOSPITAL

Shawheen River

Martha Ave

Mitchell G Drive

Apache Way

INDIAN RIDGE
CONDOMINIUMS

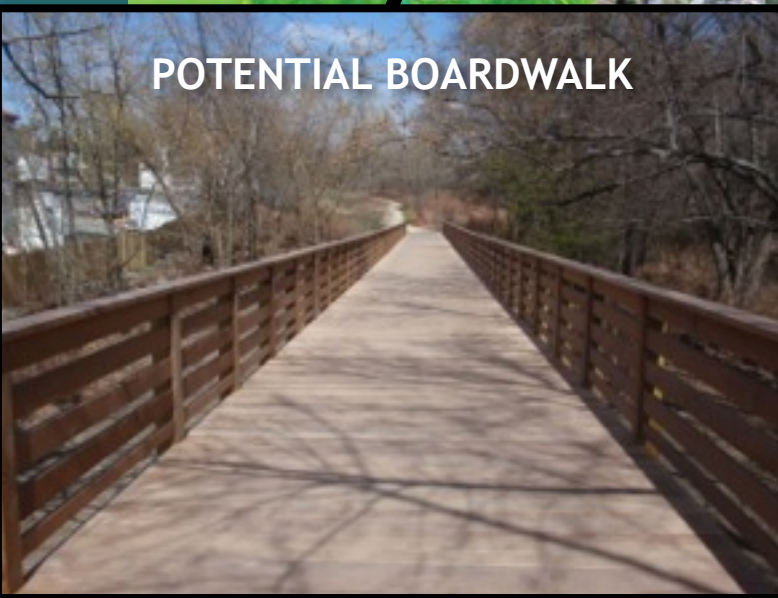
TOWN
CONSERVATION
LAND

Shawheen Street

Shawshoen River



POTENTIAL BOARDWALK





Tewksbury Rail Trail
Feasibility Study

Estimated Construction Costs

- Phase 1: 10' wide, Shared-Use Path
 - \$1.1 Million
- Phase 2A: Trailhead parking area
 - \$50,000
- Phase 2B: On-Road Bike Route Maple-Shawsheen
 - \$16,000
- Phase 2C: 10' wide, Greenway Shawsheen - Regina S.
 - \$125,000
- Phase 2D: On-Road Bike Route Regina S - South
 - \$5,000
- Phase 2E: On-Road Bike Route Trailhead - Senior Center
 - \$10,000



Funding Sources

- Community Preservation Act funds
- Mass DOT
- People for Bikes
- WalkBoston
- DCR - Recreational Trails Program
- Executive Office of Energy & Environmental Affairs - Parkland Acquisitions and Renovations for Communities (PARC)



Next Steps

- Continue Discussions with Abutters
- Title Search - approved at Town Meeting 2015
- Future Town Meeting Vote
 - Design and Construction Funding



Tewksbury Rail Trail Feasibility Study

Questions and Comments

Facebook: [Facebook.com/TewksburyRailTrails](https://www.facebook.com/TewksburyRailTrails)

Email: tewksburyrailtrails@gmail.com

