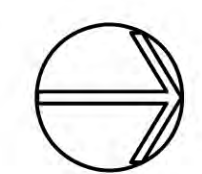


**PRELIMINARY ARCHITECTURAL SITE PLAN**



- PUBLIC USE AREAS**
- GUEST USE AREAS**
- SERVIC AND BACK OF HOUSE AREAS**

**PRELIMINARY ARCHITECTURAL SITE PLAN**

REV:	DATE:	COMMENTS:

PROJECT NO: 6016  
 DATE: 1/15/2011  
 DRAWN BY:  
 CHECKED BY:

SHEET No.

A1.00

**PRELIMINARY ARCHITECTS**  
 7114 E. BERSON DRIVE SUITE 500  
 SCOTTSDALE, ARIZONA 85251  
 P: (480) 744-8322 F: (480) 744-8005

**Imperial Beach Resort LLC**  
 10405 S. Eastern Avenue  
 Suite 100  
 Henderson, NV 89052

**IMPERIAL BEACH RESORT**  
 1060 Seacoast Drive  
 Imperial Beach, CA

THIS DRAWING IS THE PROPERTY OF LAMB ARCHITECTS AND IS NOT TO BE REPRODUCED OR TRANSMITTED IN ANY FORM OR BY ANY MEANS, ELECTRONIC OR MECHANICAL, INCLUDING PHOTOCOPYING, RECORDING, OR BY ANY INFORMATION STORAGE AND RETRIEVAL SYSTEM, WITHOUT THE WRITTEN PERMISSION OF LAMB ARCHITECTS. THE USER OF THIS DRAWING AGREES TO HOLD LAMB ARCHITECTS HARMLESS FROM AND AGAINST ALL LIABILITY, INCLUDING REASONABLE ATTORNEY'S FEES, FOR ANY AND ALL DAMAGES, LOSSES, AND EXPENSES, INCLUDING REASONABLE ATTORNEY'S FEES, THAT MAY BE INCURRED BY ANY PARTY AS A RESULT OF THE USE OF THIS DRAWING. THE USER OF THIS DRAWING AGREES TO HOLD LAMB ARCHITECTS HARMLESS FROM AND AGAINST ALL LIABILITY, INCLUDING REASONABLE ATTORNEY'S FEES, FOR ANY AND ALL DAMAGES, LOSSES, AND EXPENSES, INCLUDING REASONABLE ATTORNEY'S FEES, THAT MAY BE INCURRED BY ANY PARTY AS A RESULT OF THE USE OF THIS DRAWING.

**PRELIMINARY**  
NOT FOR REGULATORY  
APPROVAL, PERMITTING OR  
CONSTRUCTION.

**LAMB ARCHITECTS**  
7114 E. BEECH DRIVE SUITE 500  
SCOTTSDALE, ARIZONA 85251  
P: (480) 744-6322 F: (480) 744-9005



**Imperial Beach Resort LLC**  
10405 S. Eastern Avenue  
Suite 100  
Henderson, NV 89052

**IMPERIAL BEACH RESORT**  
1060 Seacoast Drive  
Imperial Beach, CA



**PRELIMINARY  
FIRST LEVEL  
FLOOR PLAN**

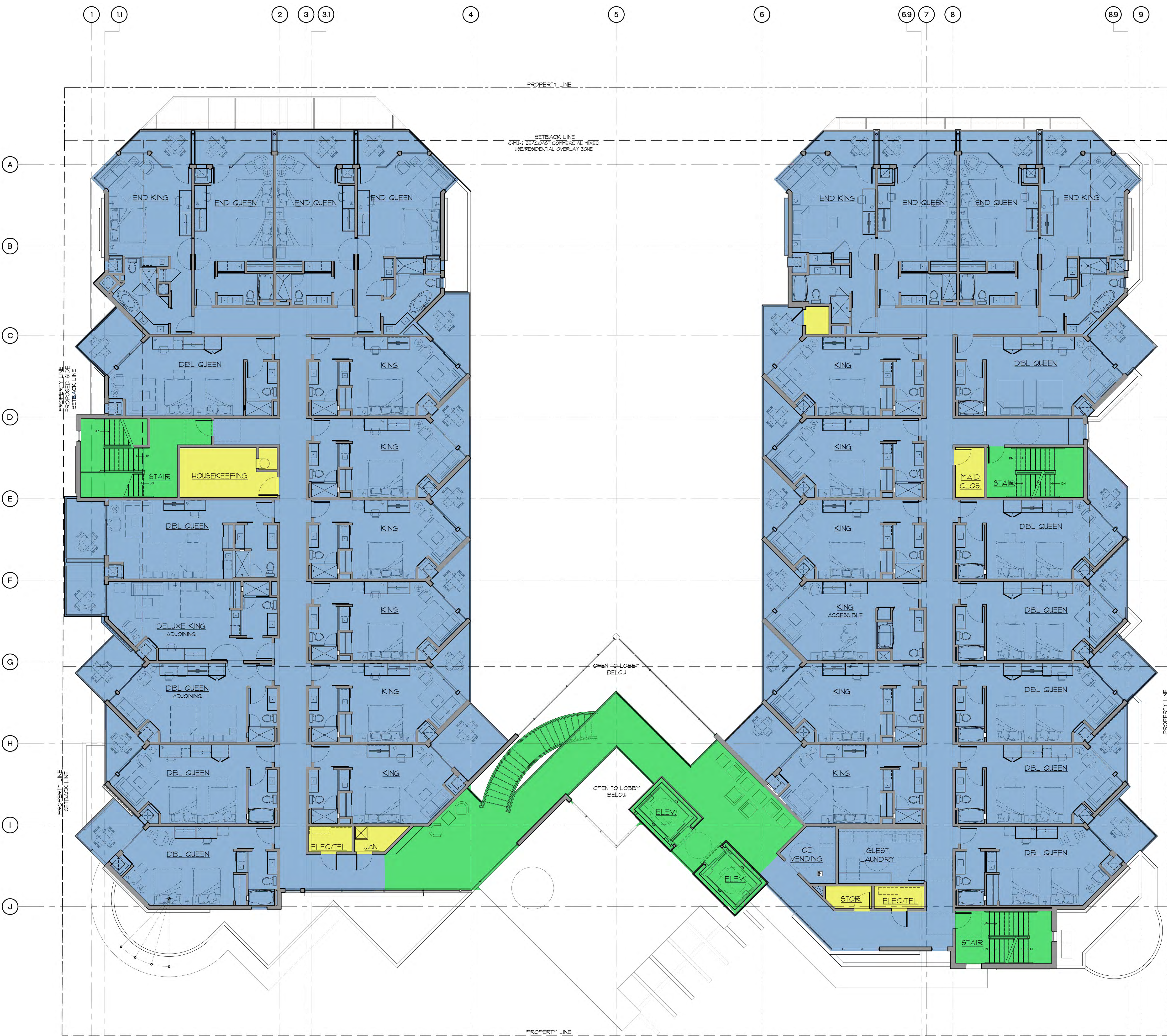
REV:	DATE:	COMMENTS:

PROJECT NO: 6076  
DATE: 1/5/11  
DRAWN BY:  
CHECKED BY:  
SHEET No.

**A2.01**



THESE DRAWINGS ARE THE PROPERTY OF LAMB ARCHITECTS AND ARE NOT TO BE REPRODUCED OR TRANSMITTED IN ANY FORM OR BY ANY MEANS, ELECTRONIC OR MECHANICAL, INCLUDING PHOTOCOPYING, RECORDING, OR BY ANY INFORMATION STORAGE AND RETRIEVAL SYSTEM, WITHOUT THE WRITTEN PERMISSION OF LAMB ARCHITECTS. THE USER OF THESE DRAWINGS SHALL BE RESPONSIBLE FOR OBTAINING ALL NECESSARY PERMITS AND APPROVALS FROM THE APPROPRIATE AGENCIES. THE USER SHALL BE RESPONSIBLE FOR VERIFYING THE ACCURACY OF ALL INFORMATION PROVIDED TO LAMB ARCHITECTS. LAMB ARCHITECTS SHALL NOT BE RESPONSIBLE FOR ANY ERRORS OR OMISSIONS IN THESE DRAWINGS. THE USER SHALL BE RESPONSIBLE FOR OBTAINING ALL NECESSARY PERMITS AND APPROVALS FROM THE APPROPRIATE AGENCIES. THE USER SHALL BE RESPONSIBLE FOR VERIFYING THE ACCURACY OF ALL INFORMATION PROVIDED TO LAMB ARCHITECTS. LAMB ARCHITECTS SHALL NOT BE RESPONSIBLE FOR ANY ERRORS OR OMISSIONS IN THESE DRAWINGS.



**PRELIMINARY SECOND FLOOR PLAN**

**PUBLIC USE AREAS**

**GUEST USE AREAS**

**SERVIC AND BACK OF HOUSE AREAS**

**PRELIMINARY NOT FOR REGULATORY APPROVAL, PERMITTING, OR CONSTRUCTION.**

**LAMB ARCHITECTS**  
7114 E. BEESON DRIVE SUITE 500  
SCOTTSDALE, ARIZONA 85251  
P: (480) 744-8322 F: (480) 744-8005

**Imperial Beach Resort LLC**  
10405 S. Eastern Avenue  
Suite 100  
Henderson, NV 89052

**IMPERIAL BEACH RESORT**  
1060 Seacoast Drive  
Imperial Beach, CA

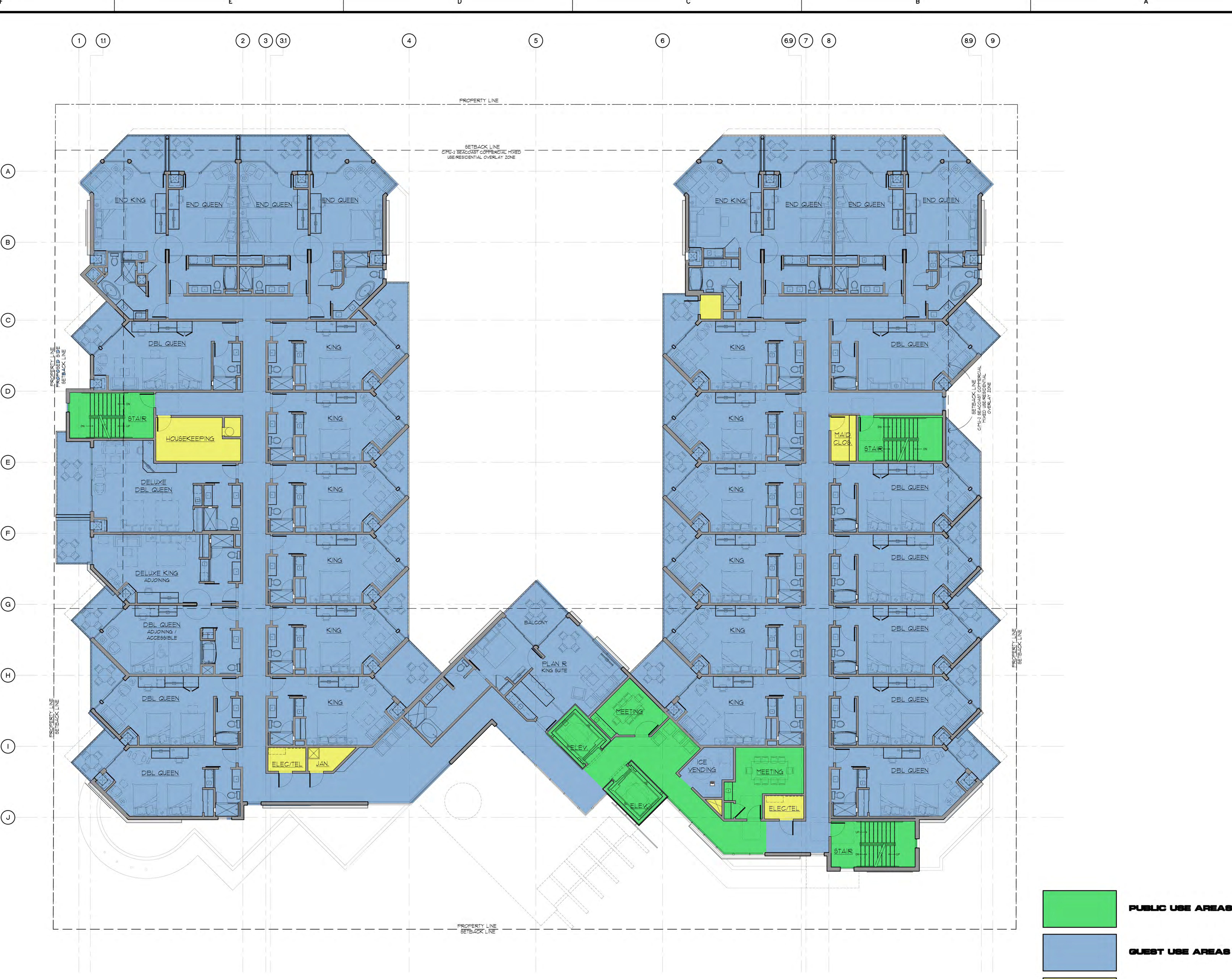
**THE Imperial BEACH RESORT**

**PRELIMINARY SECOND LEVEL FLOOR PLAN**

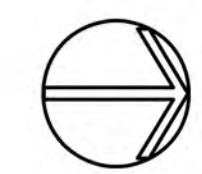
REV:	DATE:	COMMENTS:

PROJECT NO: 6076  
DATE: 1/5/11  
DRAWN BY:  
CHECKED BY:  
SHEET No.

**A2.02**



**PRELIMINARY  
THIRD FLOOR PLAN**



- PUBLIC USE AREAS**
- GUEST USE AREAS**
- SERVIC AND BACK OF HOUSE AREAS**

**PRELIMINARY  
NOT FOR REGULATORY  
APPROVAL, PERMITTING, OR  
CONSTRUCTION.**

**LAMB ARCHITECTS**  
7114 E. BERSON DRIVE SUITE 500  
SCOTTSDALE, ARIZONA 85251  
P: (480) 774-5522 F: (480) 774-9005

**Imperial Beach Resort LLC**  
10405 S. Eastern Avenue  
Suite 100  
Henderson, NV 89052

**IMPERIAL BEACH RESORT**  
1060 Seacoast Drive  
Imperial Beach, CA

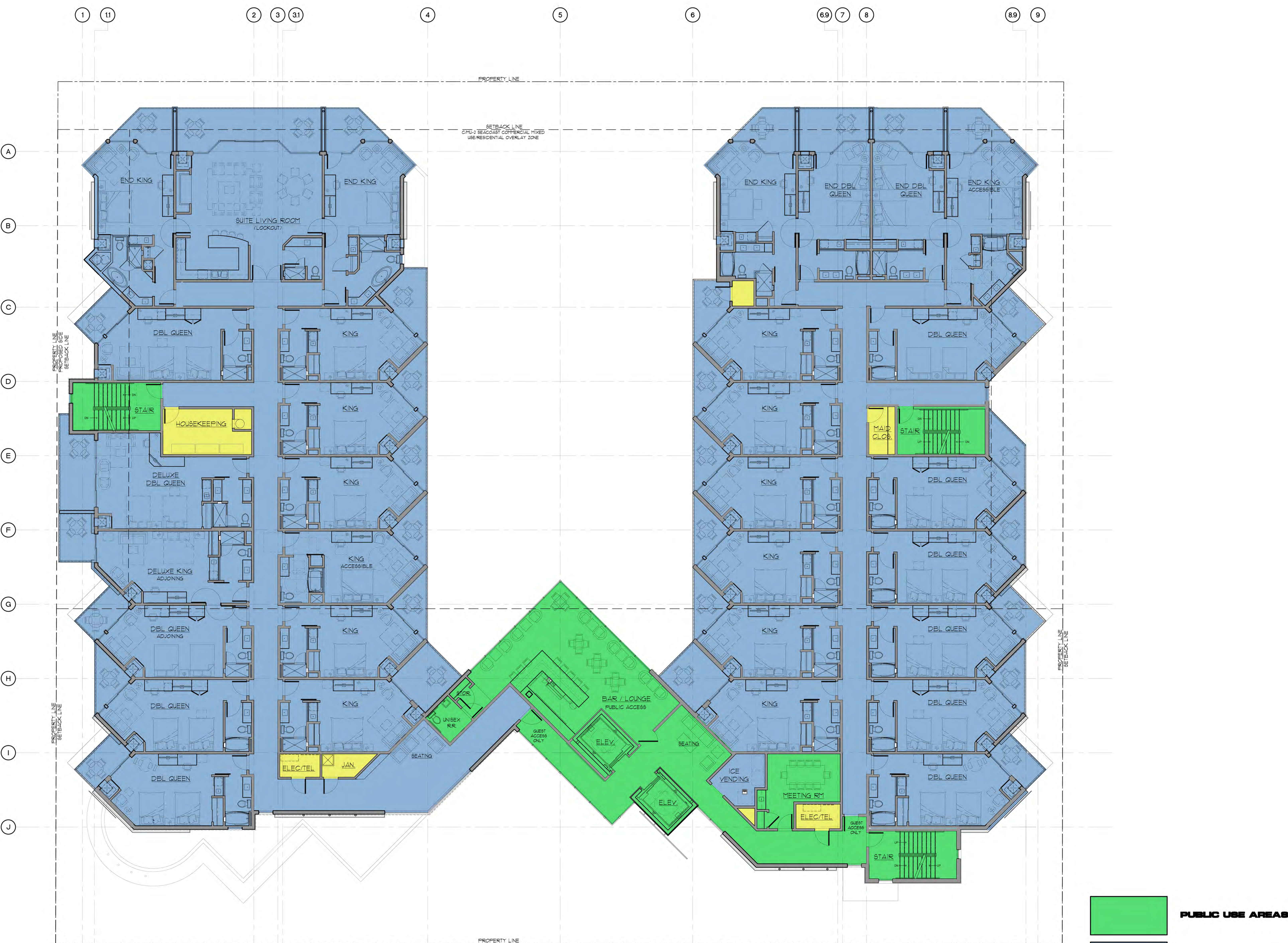
**THE Imperial BEACH RESORT**

**PRELIMINARY  
THIRD LEVEL  
FLOOR PLAN**

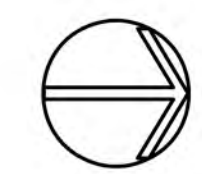
REV:	DATE:	COMMENTS:

PROJECT NO: 6076  
DATE: 1/5/11  
DRAWN BY:  
CHECKED BY:  
SHEET NO:

**A2.03**



**PRELIMINARY  
FOURTH FLOOR PLAN**



- PUBLIC USE AREAS**
- GUEST USE AREAS**
- SERVIC AND BACK OF HOUSE AREAS**

**PRELIMINARY  
NOT FOR REGULATORY  
APPROVAL, PERMITTING, OR  
CONSTRUCTION.**

**LAMB ARCHITECTS**  
7114 E. BEECH DRIVE SUITE 500  
SCOTTSDALE, ARIZONA 85251  
P: (480) 744-5322 F: (480) 744-9005

**Imperial Beach Resort LLC**  
10405 S. Eastern Avenue  
Suite 100  
Henderson, NV 89052

**IMPERIAL BEACH RESORT**

1060 Seacoast Drive  
Imperial Beach, CA

**PRELIMINARY  
FOURTH LEVEL  
FLOOR PLAN**

REV.	DATE:	COMMENTS:

PROJECT NO: 6076

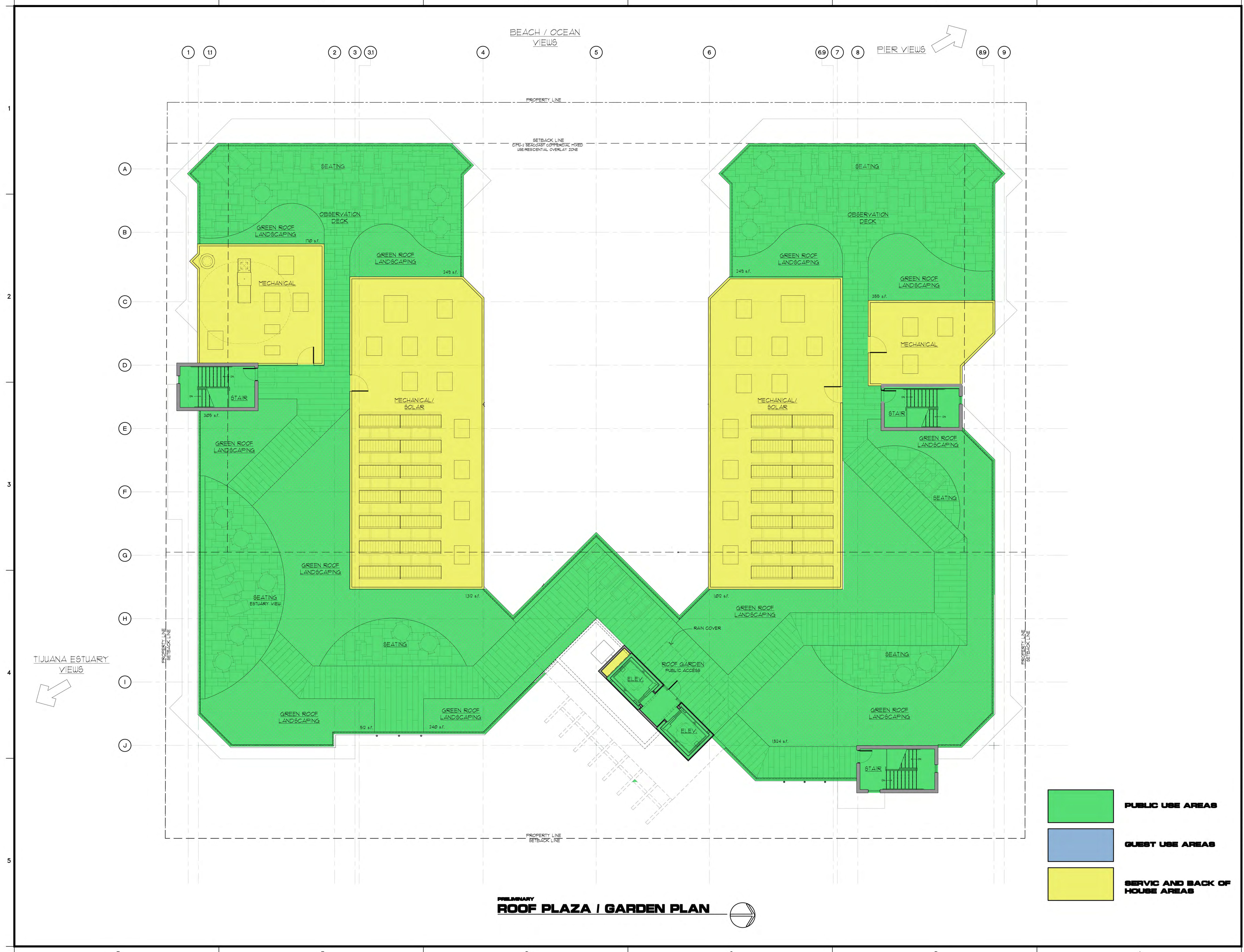
DATE: 1/5/11

DRAWN BY:

CHECKED BY:

SHEET No.

A2.04



**PRELIMINARY  
ROOF PLAZA / GARDEN PLAN**

- PUBLIC USE AREAS**
- GUEST USE AREAS**
- SERVICE AND BACK OF HOUSE AREAS**

**PRELIMINARY  
NOT FOR REGULATORY  
APPROVAL, PERMITTING OR  
CONSTRUCTION.**

**LAMB ARCHITECTS**  
7114 E. BEACON DRIVE SUITE 800  
SCOTTSDALE, ARIZONA 85251  
P: (480) 744-8822 F: (480) 744-8005

---

**Imperial Beach Resort LLC**  
10405 S. Eastern Avenue  
Suite 100  
Henderson, NV 89052

---

**IMPERIAL BEACH RESORT**  
1060 Seacoast Drive  
Imperial Beach, CA

---

**PRELIMINARY  
ROOF PLAN**

REV:	DATE:	COMMENTS:

---

PROJECT NO: 6076  
DATE: 1/5/11  
DRAWN BY:  
CHECKED BY:  
SHEET NO:

**A2.05**