

## Stacy Middle School volleyball holds Annual Charity Games

**'Pink Out' events raise \$1,300 for Oliva Fund for Cancer care at Milford Hospital**



Stacy Middle School team. Source: Milford Public Schools

The Milford Public Schools and Stacy Middle School is proud to share that the Stacy Girls' Volleyball team recently held two "Pink Out" charity volleyball

matches to raise awareness around breast cancer and support the Milford Regional Hospital Oliva's Fund for Cancer Care. Opposing teams participating in

these events include Oliver Ames (Easton) and Nipmuc (Mendon-Upton). All told,

### CHARITY GAMES

*continued on page 3*

## Keeping local news alive and communities connected

By Jennifer Russo

For the first time in our newspaper's history, the cost of postage has surpassed the cost of printing. On average, mailing services have increased in price by over 7% in the last couple of years. While the USPS may require this operationally, it does underscore the growing financial challenges facing local journalism today. Paper, ink, fuel, and distribution costs have all risen sharply in the past year, and while we've absorbed those increases for as long as we could, we now find ourselves at a turning point – and we need your help.

Despite these challenges, one thing hasn't changed: our commitment to providing free, local news that keeps our communities informed and connected. Local journalism is not just about headlines — it's about people.

It's about the high school team's championship win, the opening of a new family business, the celebration of a lifelong volunteer, the coverage of town meetings, and ensuring that every story is told.

When you open your community newspaper, you read about your neighbors, your schools, and the heartbeat of your area. You're seeing your community reflected in print - its triumphs, challenges, and spirit. Local news brings people together, fosters accountability, and preserves the stories that make each town unique. Without it, those small but powerful connections risk being lost.

Advertising revenue has always

### SUPPORT

*continued on page 2*

## Wicked local banking™

Banking for Mass, in Mass. When you bank with Central One, you're banking with people who understand your needs and are committed to making a difference right here at home.



Visit our Milford branch conveniently located at 82 Prospect Street!

MONTH-LONG

BLACK FRIDAY sale

WE'LL GIVE YOU YOUR **FIRST 3** MONTHS' PAYMENTS



Plus  FOR ALL WHO QUALIFY - UP TO **\$10,000** IN FED TAX SAVINGS ON YOUR NEW IMPERIAL CAR!

DISCOUNTS UP TO \$10,000 OR AS MUCH AS 10% OFF!

WE WORK WITH OVER 60 BANKS AND CREDIT UNIONS TO GET YOU THE LOWEST RATE POSSIBLE!

SEVEN BRANDS // BEST VEHICLE SELECTION IN NEW ENGLAND

SHOP AND COMPARE - SAVE THOUSANDS ON OVER 2,000 VEHICLES IN ONE LOCATION!

8-18 UXBRIDGE ROAD (RTE. 16) MENDON, MA | 300 FORTUNE BLVD, MILFORD, MA



Postal Customer Local  
PRSRST STD  
EGRWSS  
U.S. POSTAGE  
PAID  
PERMIT NO. 142  
SPRINGFIELD, MA

Support Our **FIRST LOCAL NEWSPAPER CAMPAIGN**



FREE PRESS  
**Milford**

SEND DONATION TO  
Local Town Pages  
9 Industrial Rd, Suite 107  
Milford MA 01757  
OR SCAN QR CODE



<https://bit.ly/SupportTheNewspaper>

# Residential curbside leaf pickup ends Dec. 5

The Town of Milford's residential leaf program will end on Friday, Dec. 5. Leaf removal hours of operation will be Monday through Friday from 7 a.m. to 3 p.m., weather permitting.

Leaves are picked up according to numbered routes (1-5) divided by street names. For the full list of routes and street names visit <https://bit.ly/MilfordLeaf2025>.

### How it works

- If your leaves are not picked up on the your scheduled day, they will be picked up on the next week's scheduled day of pick up.
- Leaves must be raked to the edge of the sidewalk or front property line (if no sidewalk exists). Note, Milford general

bylaws prohibit sweeping materials onto streets or sidewalks, and violators will be prosecuted.

- Do not pile leaves under low hanging branches.
- Do not bag leaves for curbside removal.
- Bulk of leaves will be vacuumed. Disposal of remaining leaves will be the responsibility of the homeowner.
- Leaf collection equipment will only pick up leaves – no household garbage, trash, grass, sticks, rocks, etc. will be accepted.
- If you cover your leaves, the cover must be removed prior to the first day of your scheduled pick-up. No piles will be picked up if they are covered.

### You can drop off

The Leaf Dump is located off Fiske Mill Road and will accept leaves and yard waste on Thursdays and Fridays (12 to 4 p.m.), Saturday (8 a.m. to 4 p.m.), Sunday (10 a.m. to 4 p.m.). This is for leaves and yard waste only.

### Questions

If you have any questions or concerns, or do not find your street on the list, please call the Milford Highway Department Office at 508-473-1274 Monday through Friday 7 a.m. to 3 p.m. The schedule can be found at <https://bit.ly/MilfordLeaf2025> or at the offices of the Milford Highway Dept., Town Clerk, Tax Collector, and Select Board.

Source: [www.milfordma.gov](http://www.milfordma.gov)



## SUPPORT

continued from page 1

been a vital source of support for our papers, and we are deeply grateful to the local businesses that continue to support us. But as printing and mailing costs rise to historic levels, advertising alone can no longer carry the full weight of production. We recognize that our small businesses are facing similar pressures, and we would prefer not to raise advertising rates too much. Instead, we're turning to you — our readers — for help.

This November, we're launching our annual 'Support the Newspaper' campaign. Every donation, no matter the size, helps offset the rising costs of printing and distribution, ensuring that your paper remains free, local, and delivered right to your doorstep or mailbox. Your contribution isn't just helping to print pages — it's helping to keep civic engagement alive, preserving our community history, and giving a platform to local voices that



deserve to be heard.

We are endlessly thankful for your readership, your trust, and your belief in the value of local journalism. For decades, this paper has been honored to share your stories, celebrate your milestones, and champion the spirit of our towns. With your help, we can continue to do so for many years to come.


Please consider a donation, in any amount. To contribute to our community news, please visit <https://bit.ly/Support-TheNewspaper> or scan the QR code. Thank you for your support. We have been honored to be a part of your community, and we are excited to continue to bring you the news and stories that matter to you each month.



## Library offers free self-serve gift wrapping station

If you're looking for a place to wrap your holiday gifts this year, look no further than the Milford Town Library.



The library will offer a self-serve gift wrapping station will offer everything you need - paper, bows, tags, ribbon, scissors and tape - from Dec. 1 to Dec. 23 during library hours. The station is located next to the Information Desk.

Library officials say that, thanks to last year's donations of wrapping supplies, no more supplies are needed this year.

Download the FREE myQ® app

**See clearly. Close securely.**

Kids make it home from school? Did you close the garage door? Give yourself peace of mind that your family and home are safe and secure with the LiftMaster Secure View™ 84505R. The built-in camera lets you stream video, record it, and offers 2-way communication through the myQ app — which also allows you to remotely open and close your garage door from anywhere, at anytime.

**Model 84505R**

**UNMATCHED REPUTATION, OVER 30 YEARS IN BUSINESS**  
Your trusted local professional service & installer.





**Jolicoeur**  
OVERHEAD DOORS

**GARAGE DOOR EXPERTS**  
Call or visit our website today  
JOLICOEUR OVERHEAD DOORS  
745 South Main St., Bellingham, MA 02019  
508-883-4522 • [www.mygaragedoor.com](http://www.mygaragedoor.com)

*Family-Owned since 1992*

\*View a live-stream of your garage for free. 7-day and 30-day video storage options are available via a monthly or yearly subscription. Apple, the Apple logo, iPhone, and iPad are trademarks of Apple Inc., registered in the U.S. and other countries and regions. App Store is a service mark of Apple Inc. Google Play and the Google Play logo are trademarks of Google LLC. © 2022 The Chamberlain Group LLC. All Rights Reserved. LiftMaster, the LiftMaster logo, myQ and the myQ logo are registered trademarks of The Chamberlain Group LLC, 300 Windsor Drive, Oak Brook, IL 60523 | LiftMaster.com | Wi-Fi is a registered trademark of Wi-Fi Alliance 18967801



*Gobble Gobble*

**TURKEY GIVEAWAY**

**ENTER TO WIN**  
A 20-25lb turkey, please send an email to enter.  
Subject line 'turkey'  
Drawing held 11/17  
delivery by 11/19

**licensed in MA & RI**

508-951-2178  
[jenniferdeluca@bhhspace.com](mailto:jenniferdeluca@bhhspace.com)

**BERKSHIRE HATHAWAY HOMESERVICES PAGE REALTY**

# BVT 2025 Annual Report

## Document highlights facts, figures, student achievements, and more

Blackstone Valley Regional Vocational Technical High School (BVT) is proud to announce that its 2025 Annual Report is now available on the school's website. Covering the FY25 fiscal year, the report highlights the distinctive achievements of students and staff, as well as key financial information.

"As responsible stewards of your regional vocational technical high school, we continue to take cost-saving measures to protect your investment while providing high-quality career and technical education," said Superintendent-Director Anthony E. Steele II. "This report reflects on the previous school year, which culminated in celebrating the prolific career of Dr. Michael F. Fitzpatrick, who served as superintendent-director from 1994 to 2025. It goes beyond facts and

figures to show how every dollar is maximized to prepare our students to be career- and life-ready by the time they graduate."

### Browse the Annual Report

It takes a spark to ignite a passion for safety and a one-of-a-kind career. Discover how unconventional choices, risk-taking, and the pursuit of innovation have shaped the entrepreneurial journey of Kevin Healy and Noah Boudreau (Electronics, Class of 2019) in the Alumni Spotlight, "It Takes A Spark." As founders of Smart Escape LLC, they're revolutionizing safety and successfully demonstrating how a BVT education continues long after graduation.

We invite you to read this story and others in the 2025 Annual Report, available now on the BVT website at [www.valleytech.k12.ma.us/annualreport](http://www.valleytech.k12.ma.us/annualreport).



Milford's Ruth Anne Bleakney Senior Center. Photo credit: Theresa Knapp

## CHARITY GAMES

continued from page 1

the events raised \$1,300 for the Oliva Fund for Cancer Care.

What started as a single charity match several years back has now grown to include two matches, with Oliver Ames also conducting their own Pink Out game and making a donation to the Oliva Fund.

Led by coaches and Stacy Middle School educators Ms. Celeste Salley and Ms. Meredith Purtell, players dress in pink and collect donations from

friends and family. Inspirational signs and posters are also a staple of these events. "The players really get behind these efforts. There isn't a family around that hasn't been touched by cancer, so it's personal for a lot of these young ladies," Salley stated. "With October being Breast Cancer Awareness Month, our Pink Out event is a highlight of the year in terms of community spirit and doing our part to support the many women and families fighting this awful disease."

Adding to the success of

these events, Oliver Ames found last year's Pink Out game so inspirational, they held their own Pink Out match and made a contributing donation to the Stacy fundraising this year. The Stacy team would like to thank the Oliver Ames players, families, and Coach Gary Erickson for their donation. They would also like to thank Nipmuc players, families, and Coach Bob Bennett for their participation in this year's event.

Submitted by Milford Public Schools



Stacy Middle School and Nipmuc. Source: Milford Public Schools



Stacy Middle School and Oliver Ames. Source: Milford Public Schools

**Brand Spankin' New 2025 TOYOTA**

**RAV4 XLE SUV**  
ADV AWD - 2.5L

• 27/33 MPG City/Hwy • Lane Departure

MSRP: \$35,504

BUY FOR AS LOW AS: **\$33,704\***

LEASE FOR AS LOW AS: **\$320\*** PER MONTH • PLUS TAX

SAVE \$1800  
75 RAV4s AVAILABLE

\*New 2025 RAV4 XLE AWD with MSRP: \$35,504. Lease requires approved credit; based on 10,000 miles per year. \$0.15 per mile excess. Lease for \$320 per month for 36 months with \$4,430 due at signing (including \$3,460 cash or trade down, first month's payment of \$320, and acquisition of \$650). Tax, title, registration, and inspection fees are additional. \$0 Security deposit. Lessee is responsible for insurance, maintenance, repairs, excess wear/tear, and \$350 disposition fee where permitted by law. Example Stk# TM25-1325. Offer ends 11/30/2025.

**Brand Spankin' New 2025 TOYOTA**

**TACOMA SR5**  
4x4 - i-FORCE 2.4L

• Double Cab • Alloys • Lane Departure • 5-ft bed

MSRP: \$42,954

BUY FOR AS LOW AS: **\$42,454\***

LEASE FOR AS LOW AS: **\$299\*** PER MONTH • PLUS TAX

SAVE \$500  
48 TACOMAs AVAILABLE

\*New 2025 Tacoma SR5 2.4L Double Cab with MSRP: \$42,954. Lease requires approved credit; based on 10,000 miles per year. \$0.15 per mile excess. Lease for \$299 per month for 36 months with \$4,948 due at signing (including \$3,999 cash or trade down, first month's payment of \$299, and acquisition of \$650). Tax, title, registration, and inspection fees are additional. \$0 Security deposit. Lessee is responsible for insurance, maintenance, repairs, excess wear/tear, and \$350 disposition fee where permitted by law. Example Stk# SM203571. Offer ends 11/30/2025.



**Let's Go Places**

**IMPERIAL TOYOTA**

\*SALE ENDS 11/30/2025. CANNOT BE COMBINED WITH ANY OTHER PROMOTION OR DISCOUNTS. PRICES NOT VALID WITH PRIOR SALES. SOME RESTRICTIONS APPLY. PRICE INCLUDES ALL APPLICABLE REBATES AND INCENTIVES INCLUDING \$1,000 IMPERIAL TRADE ASSIST. SEE US FOR DETAILS. DELIVERY MUST BE TAKEN FROM DEALER STOCK. CUSTOMER'S FINAL PAYMENT MAY BE HIGHER OR LOWER DEPENDING ON FINAL TRANSACTION PRICE. ADVERTISED PRICE DOES NOT INCLUDE TAX, TITLE, REGISTRATION AND \$595 DOCUMENTATION FEE. THE BUY FOR PRICE REQUIRES DEALERSHIP SOURCE FINANCING. 7 DAY OR 200 MILE RETURN EXCHANGE PROGRAM FOR YOUR TOTAL CONFIDENCE - IF YOU'RE NOT HAPPY WITH YOUR IMPERIAL CERTIFIED USED VEHICLE, BRING IT BACK WITHIN 7 DAYS OR 200 MILES AND WE WILL GIVE YOU A CREDIT OF YOUR FULL PURCHASE PRICE TOWARD THE PURCHASE OF ANOTHER IN STOCK VEHICLE. NOT RESPONSIBLE FOR TYPOGRAPHICAL ERRORS. PHOTOS ARE FOR ILLUSTRATION PURPOSES ONLY. CALL 1-508-488-2382 TO SET UP AN APPOINTMENT TO TEST DRIVE.

TOYOTA

300 FORTUNE BOULEVARD | MILFORD, MA 01757

**508-488-2382 • IMPERIALTOYOTAMA.COM**

NOW SERVICING ALL MAKES AND MODELS | MON-TH 9-9, FRI & SAT 9-6, SUN 12-6

# Greenleaf Garden Club Gala returns

## Continues tradition to support scholarships

After COVID sidelined its vital fundraiser, the Greenleaf Garden Club is pleased to announce the return of its beloved holiday gala with a program titled "Designs for the Holidays."

The gala will take place on Monday, Nov. 17, at the Ruth Anne Bleakney Senior Center, 60 North Bow Street, Milford. Doors open at 6:30 p.m. with refreshments and a chance to purchase tickets for the drawing of theme baskets, craft items, and gift certificates from local businesses. The program will begin at 7 p.m.

The gala program will feature floral designer Sara Vono-Caires creating tablescapes for both Thanksgiving and Christmas. Sara Vono-Caires is the owner and designer behind Fern and Fable, a floral design and preservation studio based in Milford. With a background in art and art history, and years of floral design experience, Sara brings a love of color, texture, and storytelling into every arrangement she designs. Her studio specializes in full-service floral

design for events, as well as resin floral preservation—turning meaningful blooms into lasting heirlooms. Sara is especially passionate about preserving memories through florals, believing that something as fleeting as a flower can become a cherished piece of art.

Gala Chairperson Michele Creamer said, "The gala is always a festive night and is a lovely way to get in the mood for the upcoming season."

All area residents are invited to attend this popular community event. Tickets are \$15 and can be obtained from any Greenleaf Garden Club member or by contacting Nancy Wojick at nancynwojick@gmail.com. Club members note that this event often sells out early. The funds raised help the club support two scholarships as well as programs at Countryside Health Care and the Milford Youth Center.

### About the Greenleaf Garden Club

Our mission statement is to promote the knowledge and love of gardening and floral design and to support garden related



civic development in the town of Milford. Our objectives are to encourage interest in all phases of home gardening and in floral design and to promote better horticultural practices, civic beauty and the conservation of natural resources. The Green-

leaf Garden Club is a member of the National Garden Clubs Inc and the Garden Club Federation of Massachusetts Inc. For information email us at greenleafgardenclub@gmail.com or visit our website GreenleafGardenClub.org.

FREE PRESS



Use this QR CODE to visit our Facebook Page



FREE PRESS

Published Monthly on the 2nd Thursday Mailed FREE to the Communities of Milford Circulation: 12,800 households & businesses

### Publisher

Jen Schofield

### Editor

Theresa Knapp

### Send Editorial to:

editor@milfordfreepress.com

### Advertising Sales Manager

Jen Schofield

508-570-6544

jenschofield@localtownpages.com

### Creative Design & Layout

Michelle McSherry

Kim Vasseur

Wendy Watkins

### Office Address

9 Industrial Road, Suite 107

Milford, MA 01757

### Ad Space Deadline

is the Friday 13 days prior to publication date.

### Ad Artwork Deadline

is the Wednesday 8 days prior to publication date.

### Reader Submission Deadline

is the 25th day of the month preceding the publication date. For example, items should be submitted by Feb. 25 to be included in the March issue.

### Please submit to:

editor@milfordfreepress.com

Free Press assumes no financial liability for errors or omissions in printed advertising and reserves the right to reject/edit advertising or editorial submissions.

© Copyright 2025 Free Press

# Antique Appraisal Day Nov. 30

A free Antique Appraisal Day will be held at Memorial Hall on Sunday, Nov. 30 from 1 – 4 p.m.

The featured appraiser will be Eric Mulak, Vice President of Eldred's Auction House, one of the leading regional antiques and fine arts auction houses in the country for 60 years, with

locations on Cape Cod and Mystic, Connecticut.

Bring your treasurers for appraisal, up to three items, but no jewelry, please.

This event is sponsored by the Milford Historical Commission as their Annual Open House. Visitors are invited to browse through the Museum to view

memorabilia from Milford's past. Civil War artifacts, military uniforms, the granite industry, boot and shoe, sports, and banks are on display.

The Lyn Lovell Research Room offers a glimpse of our past with Adin Ballou's History, Annual Town Reports, MHS Yearbooks, as well as, Blue Bind-

ers filled with interesting articles on various subjects.

The Museum, located at 30 School Street, is opened every Thursday 1 – 4 p.m. and meetings are held on the second Wednesday of the month. For further information please email Memorialhall@townofmilford.com or call 774-462-3316.

**Happy Thanksgiving** FROM YOUR LOCAL FAVORITE GROOMER

Dog Grooming Services

**The Bark ARK**

Family Owned & Operated For Over 50 Years!

**4 YEARS in a ROW!**

**COUNTRY HILLS PLAZA Rt. 16, MENDON • 508-473-4744**

# A retiree's guide for National Retirement Security Month



Mark Freeman, CEPA

## FINANCIAL FOCUS®

Provided by Edward Jones

If you're retired, it's easy to let your finances go on autopilot. Since October is National Retirement Security Month, it's a good time to revisit some areas that can impact your long-term financial security and help your money last a lifetime.

Consider these suggestions:

**Manage your withdrawal rate.** You'll likely need to tap

into your retirement accounts — your IRA and 401(k) or similar employer-sponsored plan. But think carefully about how much income you withdraw every year. If you take out too much, especially in the early years of your retirement, you risk outliving your resources. You have the option of withdrawing from these accounts at age 59½. Once you turn 73, you'll be required to take out at least a certain amount each year based on your age and account balance.

### Estimate health care costs.

When you turn 65, you will be eligible for Medicare, but you may still need a Medicare supplement plan, both of which will require premium payments. You'll probably also incur a variety of other unreimbursed expenses for doctor visit copays or deductibles, prescription drugs and vision, hearing and dental care. Additionally, about 70% of adults ages 65 and older will need some form of

long-term support, according to the Department of Health and Human Services. This may include a paid home health aide (average cost of \$77,792 per year), an assisted living residence (average cost of \$70,500 per year) or nursing home care (private room average cost of \$127,750 per year). (Cost estimates are from Genworth 2024 Cost of Care Survey.) Over the course of your retirement, these can add up, so be realistic when budgeting for health care expenses in retirement.

### Consider when to take Social Security.

You can start receiving monthly Social Security checks at age 62, but your payments will generally be larger if you wait until your "full" retirement age of 66 or 67. (The size of your payments will "max out" at age 70.) If you believe you have longevity working in your favor, and you can afford to wait, you may well be better off by delaying Social Security as long as possible.

**Avoid investing too conservatively.** Once you're retired, you might think you should take as few chances with your investments as possible — after all, you have less time for them to bounce back from a downturn than you did during your working years. Nonetheless, it's important to consider keeping a reasonable percentage of growth-oriented investments in your portfolio to help you stay ahead of inflation. Even at a low rate, inflation can erode your purchasing power over time.

### Keep your generosity in check.

If you have grown children who need financial help, or grandchildren heading to college someday, you'd no doubt like to do what you can to assist them. However, the hard truth is that they have more time than you to find workable financial solutions, whereas if you deplete your funds through your generosity, you could put yourself in a pre-

carious position. So, be as giving as you can afford — but try not to go beyond that. By preserving your financial independence, you'll end up benefiting your family as well.

Retirement is ideally an enjoyable time in your life, especially if you feel financially stable. So, take time to check in periodically to keep that stability on track.

Contact Mark today to discuss this topic or any of your financial goals.

Mark Freeman, CEPA  
Edward Jones Financial Advisor  
77 West Main Street,  
Hopkinton, MA 508-293-4017  
[Mark.Freeman@edwardjones.com](mailto:Mark.Freeman@edwardjones.com)

This article was written by Edward Jones for use by your local Edward Jones Financial Advisor.

*Sponsored articles are submitted by our advertisers. The advertiser is solely responsible for the content of this article.*

## LAWN AND SNOW SERVICES

**Seasonal Cleanups**

**Snow Plowing • Snow Blowing**

**Hand Snow & Ice Clearing**

**Shrub Trimming • Lawn Cutting**

**Walk, Driveway & Bed Edging**

**Attention to Detail**  
**Local Small Business**

**FULLY INSURED • FREE QUOTES**

[CutAndClearLawnAndSnowServices.com](http://CutAndClearLawnAndSnowServices.com) | **774.462.1742**

**The Milford Free Press is currently seeking freelance writers who live in the area and are interested in writing for our publication. If interested, please contact [editor@milfordfreepress.com](mailto:editor@milfordfreepress.com).**

## FOR ALL YOUR PLUMBING NEEDS

**CALL TODAY!**

**508-918-4648**

Gerald Moran, Owner

License # PL36504-J  
Insured

## SALMON

HEALTH & RETIREMENT

## Grateful Hearts,

### A GIVING COMMUNITY

As the seasons change, embrace a lifestyle where comfort, connection, and peace of mind come together. From engaging activities and festive gatherings to exceptional amenities and personalized support—including assisted living and memory care—our community is here to help you thrive now and into the future.

Call 508-533-3300 today to learn more — we can't wait to welcome you home.

SALMON at Medway  
— 44 Willow Pond Circle  
Medway, MA 02053

# Milford Public Schools updates

### Important Dates:

**Nov. 19 at 6 p.m.** - Dual language Program Information Night, Memorial School

**Nov. 26 - 28** - No School - Thanksgiving Break

**Dec. 5** - Early Release

### District News:

Superintendent of Schools Dr. Craig Consigli is offering staff, students, parents, guardians, caregivers, and community members multiple ways to provide feedback to him about how we are doing as a district. It is important for him to understand what the Milford Public Schools does well, where it needs to improve, and what it might be overlooking from all members and perspectives of our community. Dr. Consigli welcomes the opportunity to sit with any member of the community for 30 minutes to get a better understanding of how MPS is doing. Feel free to email him directly if you are willing to meet. He can be reached at [cconsigli@milfordma.com](mailto:cconsigli@milfordma.com). If you would rather not sit for

a 1:1 conversation, he will be offering other ways to provide feedback including open forums and surveys.

The Milford High School Athletic Hall of Fame has elected ten individuals and three teams to its "Class of 2025!" Included in this total are two "Old Timer" graduates of MHS, as well as two Milford resident graduates of St. Mary's Central Catholic High School, which closed in 1973, as the Committee voted in 2023 to open a "St. Mary's Wing" of the Hall of Fame. The inductees are Robert Alves (1975), Todd Boldy (1988), Brian Brogioli (1984), David Cavazza (1969), Joseph Colelli (1999), Madison Garber (2014), and Shannon Smith (2013). The two inductees from St. Mary's are Louis Colabello (1967) and Robert Meomartino (1962). We will also be inducting one individual, James Black (St. Mary's 1971), posthumously and three teams - the 2007 Div. I State Finalist Girls Volleyball Team, the 2012 Div. I State Champion Softball Team, and

the 2013 Div. I State Champion Softball Team. Inductees will be presented at the Hall of Fame Banquet scheduled for Sunday afternoon, Nov. 23, 2025 at 12 p.m. at the Portuguese Club, Prospect Heights, Milford, Massachusetts. Each of our past programs has been a very special and memorable event, and we look forward to providing another great moment in Milford High School and St. Mary's CCHS athletic history. The banquet is open to the public, and family and friends are urged to secure their tickets early as past programs have sold out. Tickets are available for \$ 40 each and can be purchased by sending a check for the total made out to Milford High School Hall of Fame, c/o Nick Zacchilli, 5 Calvin Drive, Milford, MA 01757.

Ms. Marcela LaLiberte, Adjustment Counselor at Memorial, and Ms. Jenn Noorjani, English Learner Program Director, were invited to be the guest speakers at William and James College's October Didactic Seminar for students in School

and Clinical Psychologists field placements. The two presented on effectively partnering with "First-Language Not English" families in the school setting. We feel fortunate to share our district's best practices with College students entering the field of education.

The Milford Public Schools had 19 "Year 2" educators from Milford Public Schools engage in learning walks this past week in the Mendon-Upton, Milford, and Ashland Public Schools. These teachers had an opportunity to visit four classrooms and learn from other educators. It was a positive experience for everyone involved. Thank you to our partners in Mendon-Upton and Ashland for making this opportunity possible.

### Milford High School

MHS Administration and Ms. Jenn Noorjani, English Learner Program Director, are pleased to announce that Ms. Bruna Correia has been hired as the MHS English Learner (EL) Department Coordinator.

She brings exceptional qualifications and deep institutional knowledge to this role. She has been a valued member of the Milford Public Schools community for over six years, serving as an English Language Teacher at Milford High School since 2019, as well as EL Team Leader for the past three years. Ms. Correia's multilingual abilities (fluent in Portuguese and Spanish) and her deep understanding of our school culture position her perfectly to ensure a seamless transition into this EL Coordinator role.

Milford High School hosted a Clean Energy Green Workforce Fair on Oct. 23, 2025. More than a dozen local businesses and organizations showcased the amazing work they are doing in the Clean Energy sector for our students. Students learned about potential STEM career paths, with an eye on the environment. Did you know that MHS is just 1 of 5 high schools in Mass-

### MILFORD SCHOOLS

*continued on page 7*

# Robert Roofing & Gutters

## 49 YEARS IN BUSINESS!

**ONE CALL SENDS  
A ROOFER...  
NOT A SALESMAN**

**857-247-8709**

- Roofing
- Siding
- Windows
- Gutters
- Residential Rubber
- Flat Roofs

**NO GIMMICKS,  
JUST HONEST PRICING!**



**FINANCING AVAILABLE**



**FREE ESTIMATES  
LICENSED & INSURED**

[www.robertroofingandgutters.com](http://www.robertroofingandgutters.com) • [Rgreene465@gmail.com](mailto:Rgreene465@gmail.com)

**MILFORD SCHOOLS**

*continued from page 6*

achusetts with the Clean Energy Innovation Career Pathway designation? Our students have amazing opportunities different from most high schools to explore these exciting and expanding STEM fields!

Twelve Milford High School students led by Mr. Anthony Salvador (Robotics Teacher) and Ms. Deb Monteiro (Career Counselor), participated in the Robotics Challenge at the Massachusetts Manufacturing MASH-UP event at Gillette Stadium, a statewide manufacturing industry showcase that connects students, educators, and industry partners through hands-on innovation. Students designed, built, and demonstrated robot prototypes to local manufacturers and pitched their ideas to a panel of judges for funding approval.

**Stacy Middle School**

Stacy Middle School celebrated a UNITY Spirit Week in October. Daily themes included: Sport/Passion, Heritage, Unity & Anti-Bullying, Stacy Pride, Pink & Kind. Students and staff connected over shared connections and community values!

**Shining Star Early Childhood Center**

Milford Fire Department visited Shining Star this week to speak with the preschool students about fire safety. The Stars were able to see the firefighters in their gear and also investigate the firetruck. Thank you, MFD!

Shining Star Staff Spotlight features:

- Ms. Julie Ricca. She was nominated because she has been a vital member of Shining Star. Ms. Ricca has taken on many different roles at SSECC from subbing, 1:1 assistant, classroom assistant, and even manning the Main Office at times. She is always there to help or step in when needed and does it all with a smile. Ms. Ricca is a dedicated and loyal colleague and friend that makes the lives of our student stars and staff better and brighter each day
- Ms. Kristin O'Malley. She was nominated because as a BCBA, Ms. O'Malley goes above and beyond in her role, not only supporting all of our

kids but being a resource for all staff at Shining Star. She is someone you can always count on. She has helped others grow in their roles thanks to her guidance and sharing

of knowledge.

- Ms. Stevany Matthews. She models ways to engage and communicate with families, and has been such a resource at Shining Star. Additionally,

not enough can be said for all the work Ms. Matthews does coordinating with the FRC, families, and working within the classroom. All of her work and collaboration helps us to

make the best informed decisions for the diverse students at Shining Star.

**MILFORD SCHOOLS**

*continued on page 10*

**Pictures of the Week featured in the MHS Weekly Bulletin**



**Week of 9/26/25:** This week's Scarlet Hawks of the Week (SHOW) are none other than Dean Rappazzini and Avalina DiGiallonardo, pictured here with Unified Basketball Coach Ms. Bianca Guerreiro. These athletes have been crushing it in practice and were leaders in this week's Unified Basketball game.



**Week of 10/3/25:** The Stacy Middle School Cafeteria staff take a break from lunch preparation to pose with Dr. Consigli. The Stacy team serves more than 600 lunches a day, with that number exceeding 800 lunches on Domino's pizza day! Thank you to this great team!



**Mitsubishi Electric Ductless Systems** provide year-round comfort and are up to **40% MORE Efficient than Traditional Systems!**



**BOUCHER ENERGY SYSTEMS, INC.**



**Boucher Energy is an Approved Mass Save Heat Pump Installer**

**Now Offering Upfront Rebates**

**508-473-6648**

**BoucherEnergy.com**



# What It Is and How to Treat It

By Roger M. Kaldawy, M.D.  
Milford Franklin Eye Center

Glaucoma is one of the leading causes of preventable blindness, affecting millions of people worldwide. Often called the “silent thief of sight,” glaucoma usually develops slowly and without symptoms. By the time people notice vision changes, significant and irreversible damage may already have occurred.

So, what exactly is glaucoma, and how is it treated today? Let’s take a closer look at this common but serious eye condition—and the many advanced treatments now available.

### What Is Glaucoma?

Inside your eye, a clear fluid called aqueous humor circulates to nourish tissues and maintain healthy pressure. Normally, this fluid drains through tiny channels. In glaucoma, those channels become blocked or don’t work properly. Pressure builds up and damages the optic nerve—the cable that carries visual signals from your eye to

your brain.

The most common type, called open-angle glaucoma, develops slowly over time. Other forms, like angle-closure glaucoma or normal-tension glaucoma, are less common but can also cause vision loss.

### How Is Glaucoma Detected?

Because glaucoma often has no warning signs, regular eye exams are essential. Your eye doctor can measure your eye pressure, examine your optic nerve, perform a visual field test, and use imaging (like OCT scans) to look for early damage. Detecting glaucoma early is the best way to preserve your vision.

### Treatment Options

The main goal in treating glaucoma is to lower eye pressure and protect the optic nerve. Fortunately, there are now many options—from simple eye drops to sophisticated laser and surgical procedures.

#### 1. Eye Drops

Eye drops are usually the first line of defense. They either help

your eye drain fluid better or slow down its production.

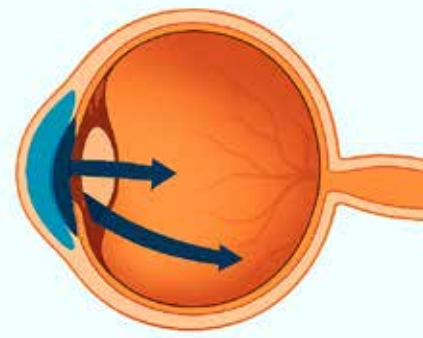
- **Prostaglandin Analogs** (like latanoprost, bimatoprost, and travoprost): These are among the most common and effective glaucoma drops. They’re typically used once a day and can lower eye pressure well. Some patients may notice red eyes, longer eyelashes, or a slight darkening of the iris or eyelid.

Now, there’s an exciting new advancement: **iDose TR**—a tiny injectable device placed inside the eye that slowly releases medication over many months, so patients don’t have to use daily drops.

Another long-lasting option is **Durysta**, a biodegradable implant that steadily delivers medicine inside the eye. These treatments reduce the burden of daily drop use and help maintain consistent eye pressure.

- **Beta Blockers** (like timolol):

## GLAUCOMA TREATMENT



- Medicated eye drops
- MIGS
- Laser treatment
- Surgery

These reduce the eye’s fluid production. They’re effective but can sometimes cause fatigue, slower heart rate, or breathing issues in patients with asthma.

- **Alpha Agonists** (like Brimonidine) and **Carbonic Anhydrase Inhibitors** (like Dorzolamide): These drops also lower eye pressure in different ways, though they can cause dryness, mild stinging, or allergic reactions in some patients.

For those who struggle to remember daily drops or experience side effects, these new sustained-release options are changing how we manage glaucoma and are quickly replacing drops as first line of treatment:

#### 2. Laser Treatment (SLT)

Selective Laser Trabeculoplasty, or SLT, is a gentle,

EYE

continued on page 9





# MILFORD - FRANKLIN EYE CENTER





Roger M. Kaldawy, M.D.



Mark Barsamian, D.O.



Dan Liu, M.D.



Michael R. Adams, O.D.



Shalin Zia, O.D.



Donald L. Conn, O.D.



Dr. Purvi Patel, O.D.

## BECAUSE YOUR EYES DESERVE THE BEST

NOW ACCEPTING VSP & DAVIS VISION INSURANCE  
NEW PATIENTS RECEIVE A FREE PAIR OF SELECT GLASSES

### SMILEFORVISION.COM

**FRANKLIN OFFICE**  
750 Union St.  
508-528-3344

**HOPKINTON OFFICE**  
66 Main St.  
508-528-3344

**MILFORD OFFICE**  
160 South Main St.  
508-473-7939

**MEDFIELD OFFICE**  
258 Main St.  
508-528-3344

**SURGERY CENTER MILFORD**  
145 West St.  
508-381-6040

## Milford Family & Community Network CFCE – November

October was a busy month at the Milford Family & Community Network CFCE! Our registered weekly playgroups are in full swing and we have plenty of room on our waitlist. If you would like to be a guest, please call the office at 508-277-4981. We can't wait to see you at one of our November programs.

### Desserts and Discussions

Join Miss Harmony for this parent-led conversation on Wednesday, Nov. 19 from 6 - 7:30 p.m. Registration is required.

### Mini Chefs

Cook, Create and Explore! Join us for a kids' cooking class

on Friday, Nov. 21 from 9:30 - 11 a.m. Registration is required.

### Intergenerational Play

On Dec. 2 from 1 - 2:30 p.m., we will visit our friends at The Cornerstone at Milford for fun with the children and residents. Registration is required.

For more information on MFCN CFCE playgroups and/or programs, feel free to visit our website calendar or contact us at 508-277-4981 or [familynetwork@milfordma.com](mailto:familynetwork@milfordma.com), online at [milfordpublicschools.com/milfordfcn](http://milfordpublicschools.com/milfordfcn), or on Facebook at Milford Family and Community Network CFCE.

## EYE

*continued from page 8*

in-office laser procedure that helps the eye's natural drainage system work better. It takes only a few seconds, is painless, and can lower pressure just as well as daily drops for many patients. SLT is safe, repeatable, and eliminates the need to remember medications (drops)—it's a great choice for many patients. SLT is quickly replacing drops as first line treatment for glaucoma.

### 3. Minimally Invasive Glaucoma Surgery (MIGS)

For patients needing more pressure reduction—or those already having cataract surgery—MIGS procedures are an excellent option. These involve placing tiny stents or micro-devices (like the iStent, Hydrus Microstent, or Xen Gel Stent) to improve drainage through small, self-sealing incisions. Recovery is usually quick, and the risks are lower than with traditional surgeries.

### 4. Advanced Glaucoma Surgeries

In more advanced cases, or when other treatments aren't enough, traditional surgeries can achieve stronger pressure control.

- **Trabeculectomy:** This surgery creates a new pathway for fluid to drain from the eye.
- **Aqueous Shunt or Tube Implants:** These use small drainage tubes to help fluid

leave the eye safely.

Although these procedures require close follow-up, they remain highly effective for patients with advanced glaucoma, however they are risky procedures.

### In Summary

The good news is that glaucoma care has advanced tremendously. From effective drops and innovative implants like iDose TR and Durysta, to gentle laser treatments and modern microsurgeries, we have more tools than ever to protect your sight.

The key is early detection and ongoing care. Regular eye exams allow your doctor to catch glaucoma before it causes permanent damage and to tailor treatment to your specific needs.

At Milford Franklin Eye Center, we are committed to offering the latest advancements in glaucoma care, including iDose TR. We are proud to have performed one of the first iDose TR procedures in New England at our Cataract and Surgery Center of Milford. As a leader in advanced eye care technology, we are thrilled to be among the pioneers of this groundbreaking treatment. Our surgery and surgeon were featured in a segment broadcasted on Channel 5 TV. We are available for second opinions and dedicated to providing world-class outcomes.

For more details, see our ad on page 8.

*Sponsored articles are submitted by our advertisers. The advertiser is solely responsible for the content of this article.*

## Blackstone Valley Technical Institute launches under Steele's leadership

### BVTi opens its doors after hours to empower adult learners

Superintendent-Director Anthony E. Steele II is pleased to announce the launch of a new initiative that supports the pursuit of lifelong learning through high-quality evening programs for adult learners. Blackstone Valley Regional Vocational Technical High School is proud to serve as the home of the newly established Blackstone Valley Technical Institute (BVTi).

Whether you're a working professional seeking to advance your career through hands-on technical training or trying a new hobby for personal enrichment, BVTi's course offerings are designed to meet a wide range of goals. Programs are engaging, practical, and, most importantly, accessible. If you're

ready to Explore, Experience, Excel, let us help you take the next step in your professional or personal journey.

"As an educational leader passionate about vocational education, we're excited to expand our school community by offering new learning opportunities through the Blackstone Valley Technical Institute," said Dr. Matthew Connors, Assistant Superintendent/Curriculum Director. "Working collaboratively with our Director of Workforce & Economic Development, Mary May, we are focused on developing a strong catalog of adult education programs and course offerings."

"We're eager to expand access to career technical education,

launching BVTi with credential-based programs in Advanced Manufacturing, Electrical, HVAC, Plumbing, and Welding," added Mr. Steele. "This endeavor allows us to support adults interested in upskilling or retraining, provide skilled labor to the local workforce, and generate non-local taxpayer revenue to help fund the school. It is an honor to serve our employer partners, our students, and the broader school community."

BVTi is currently enrolling students and seeking qualified instructors. Grant funding is available for eligible students, along with flexible payment plans. To explore the full course list or to register, visit [www.valleytech.k12.ma.us/bvti](http://www.valleytech.k12.ma.us/bvti).

**SOUTHWICK'S ZOO**

PRESENTS

**Winter Wonderland**

**New England's Premier Holiday Lights Display**

**NOVEMBER 22 - DECEMBER 28**

Visit our website for information and to purchase tickets:  
**SouthwicksZoo.com**

Learn More

**MENDON, MA**

**SOUTHWICKSZOO.COM**

**MILFORD SCHOOLS**

*continued from page 7*

- Ms. Amy Riordan. She is so open to collaborating and providing support to her colleagues. We are so appreciative of Ms. Riordan's team work, patience, and guidance.
- Ms. Jodie Nobil. Her dedication and compassion in helping students find their voices

is exemplary. She always has a smile on her face and a caring heart working with the students both inside as well as outside of the classroom. She consistently meets each student where they are, making speech sessions fun and enjoyable for all students! Having her to work alongside has been an invaluable resource to the wonderful progress of our Shining Star students!



**Week of 10/10/25:** Catie Delaney, a Junior at MHS, met with Superintendent Dr. Craig Consigli to discuss her plans to start a Girls' STEM Club at Woodland. Among the specific topics of interest she shared were robotics, coding and 3D printing top the list. Dr. Consigli shared, "Catie is passionate about introducing others to the STEM world and is seeking multiple grants to help fund her idea. Meeting with her was truly inspirational. Her commitment to seeing her dreams come true is what I hope we foster in all our students."



**Week of 10/17/25:** Dr. Consigli finds himself surrounded by a group of princesses at the 6th and 7th grade "Fright Night" Dance held in the Stacy Middle School bus loop. Hundreds of kids were dancing the night away and enjoying the company of their friends. Thank you to the SMS PTO, the faculty, staff and administration for hosting such a great event for our students!

**Week of 10/24/25:** Milford High School students participated in the Robotics Challenge at the Massachusetts Manufacturing MASH-UP event at Gillette Stadium, a statewide manufacturing industry showcase that connects students, educators, and industry partners through hands-on innovation. Students designed, built, and demonstrated robot prototypes to local manufacturers and pitched their ideas to a panel of judges for funding approval. Pictured here are MHS Sophomores Kayk Rodrigues and Garrett Ottman with the MA Secretary of Education, Mr. Patrick Tutwiler.



**Everything you need to manage your money.**

Shop | Pay | Manage | Track

How you choose to connect with your money is personal. That's why, at Charles River Bank, we offer powerful solutions — including online & mobile banking, mobile wallet, debit card control, and more — with every checking account. So you can manage your money how, when, and where you want!

Visit [CharlesRiverBank.com](http://CharlesRiverBank.com) to learn more about our accounts or to get started today.

**Charles River Bank**  
Personal Connections. Powerful Solutions.  
Medway • Bellingham • Mendon

Member FDIC  
Member DIF

**New England Steak & Seafood Restaurant**



**Route 16, Mendon • 508-473-5079**  
newenglandsteakandseafood • nesteakandseafood.com



PLEASE RECYCLE ME!

Trinity Episcopal Church Annual

**Christmas Fair**

17 Congress Street, Milford, MA  
Saturday, December 6

9:00 AM - 2:00 PM

Raffle Tickets - Gift Baskets - Greens Table  
Treasure Trove - Christmas Gifts - Jewelry  
Baked Good - Santa - Lunch

# Clear the clutter this Fall with Affordable Junk

There are plenty of reasons to call a junk removal service. Maybe walking through your basement has gotten difficult or there is no more room in the attic? Perhaps you are planning to move, and you need to declutter before your open house?

Figuring out who to call can be challenging. If you contact one of the big haulers, they route you to a phone center where they've never even heard of your town, plus their pricing seems vague and full of extra fees. No wonder you've let the stuff pile up—it's too much of a hassle to get rid of it!

Or you can call Affordable Junk Removal and let a local small business with deep community roots take care of everything.

Jay Schadler started his business in 2005. Back then, it was just him and a beat-up pickup truck taking small jobs and working nights and weekends when he could. As the years rolled on, his business grew, but his commitment to customer service never wavered. Now he's got a staff of ten, along with eight trucks, servicing eastern and central Massachusetts and northern Rhode Island.

Affordable Junk Removal specializes in house and estate cleanouts. If your garage, attic, or office is overflowing with stuff, take back your space and let the pros do the heavy lifting.

## Business spotlight

Jay and his team have handled it all. They've dismantled above-ground pools, hauled away ancient hot tubs, taken down old fencing, and stripped away worn carpeting. They'll come for a single item, or they'll clean out an entire house. And they can take almost anything. They can't accept hazardous materials, brush, dirt, or concrete, but everything else is fair game for them to take away.

Not everything ends up in a landfill—not if Jay can help it. He first tries to either recycle or donate items. Only after he tries to repurpose items do they end up at the transfer station.

Working with Affordable Junk Removal is simple. First, you can load stuff yourself if you want by renting a 15-cubic-yard dumpster for a week and chucking up to a ton of your unwanted stuff. If you need to get rid of more weight, then Jay prorates that tonnage—you never pay for what you don't use.

If you don't want to be bothered with the dumpster, they've also got a driveway special where they'll take away a truckload of your unwanted things if you pile it up. Or if you



don't want to lift a finger, then you can point at the items, and the team will fill up their truck and haul away your unwanted things. However you do it, you're left with more space and more peace of mind.

Jay and his team beat the big waste haulers on both price and customer service. When you call Affordable Junk Removal, you aren't connected to an anonymous call center. Your phone call goes right to Jay.

And speaking of pricing, Jay is upfront about it. His website shows the truck sizes and prices, so you can save time

knowing your costs before you call for an appointment. There aren't any hidden costs or surprise fees with Affordable Junk Removal.

Affordable Junk Removal is fully licensed and fully insured, and they'll treat your property with care and respect.

They also have a thriving commercial business, working with contractors and roofers to clear away debris and keep the job site clean. They can even handle commercial and residential emergencies with same-day service.

Jay and his family are deeply involved in the community. He

and his wife, Christine, run the Corner Market restaurant in Holliston. It's not uncommon for someone to reach Jay at the restaurant, order a sandwich, and then schedule a junk removal appointment. Yes, the local small business really can handle everything!

Contact Affordable Junk Removal and Dumpster Rental and let a local small business take care of everything for you. Call Jay Schadler at 774-287-1133 or visit us online at [AffordableJunkRemoval.com](http://AffordableJunkRemoval.com).

PAID ADVERTISEMENT

### WE WANT TO HEAR FROM YOU!

Email us about an upcoming event or a concern about things happening around town.

[editor@milfordfreepress.com](mailto:editor@milfordfreepress.com)

## KELLY'S FARM

"Your old fashioned farm stand experience since 1936"

**OPENING**  
SATURDAY NOV. 22

**BEST QUALITY TREES**  
in the Area!

*Fresh Cut Christmas Trees, Holiday Wreaths, Decorative Pots & Roping*

146 Milford St., Upton • 508.529.4564  
OPEN 7 DAYS • 9:30AM – 7:30PM

## ARPIN TRAVEL SERVICE, INC.



**Stop by to visit us at our new location**

360 Pulaski Blvd., Bellingham, MA 02019

**(508) 883-1013**

[www.arpintvl.com](http://www.arpintvl.com)

*Since 1978 we have been helping clients make their travel dreams come true!!*

# Traveling quilt exhibit honors veterans

**'Sacrifice: The Heart of the Military' at library through Nov. 28**

By Theresa Knapp

During the month of November, the Milford Town Library is featuring 'Sacrifice: The Heart of the Military,' a traveling "story quilt exhibit honoring

American service members."

The exhibit includes six quilts, each approximately 6 feet by 4 feet, accompanied by an interpretive label.

The exhibit is free and open

to the public during library hours (Mon. to Thurs. 9 a.m. to 9 p.m., Fri. 9 a.m. to 6 p.m., Sat., 9 a.m. to 5 p.m.). It is located on the main floor of the library.



"In Flanders Fields," with gratitude to veterans of World War I.



"In the Light," with gratitude to veterans of World War II.



"In the Air," with gratitude to veterans of Korean War.



"In Retrospect," with gratitude to veterans the War in Iraq.



"In the Name of Country," with gratitude to veterans of the War in Afghanistan.



"In the Unknown," with gratitude to veterans of the Vietnam War.  
Photos by Theresa Knapp

## Recent Home Sales

Date	Milford	Amount
10/24/2025	15 Emerson Lane #U	\$743,000
10/24/2025	16-18 Cedar Street	\$750,000
10/24/2025	18 Chester Lane	\$449,900
10/23/2025	10 Diantonio Drive	\$620,000
10/22/2025	8 Hancock Street	\$665,000
10/17/2025	13 Sidney Road	\$479,900
10/17/2025	5 Colby Drive	\$559,900
10/17/2025	22-24 Purchase Street	\$725,000
10/15/2025	255 Congress Street	\$655,000
10/15/2025	7 Hancock Street	\$550,000
10/14/2025	16 Cuniff Avenue	\$546,500
10/10/2025	30 Pleasant Street	\$528,000
10/09/2025	171 Highland Street	\$455,000
10/09/2025	141 Congress Street	\$470,000
10/09/2025	61 Grove Street	\$510,000
10/09/2025	50 S Main Street	\$289,900
10/08/2025	12 Trinity Drive	\$750,000
10/08/2025	33 Purchase Street #B	\$387,900
10/06/2025	15 Village Circle	\$570,000
10/06/2025	33 Howard Street #A	\$645,000
10/03/2025	4 Middleton Street #4	\$420,000
10/03/2025	357 Purchase Street	\$765,000
10/01/2025	5 Dartmouth Drive	\$562,000
10/01/2025	47 Black Bear Circle	\$629,900
09/30/2025	21 Shadowbrook Lane #3	\$310,000
09/30/2025	41 Harvard Drive	\$505,000
09/30/2025	9 Country Club Lane #A	\$465,000
09/30/2025	2 Country Club Lane #C	\$400,000
09/30/2025	1 Woodland Court #B	\$614,900
09/29/2025	18 Penny Lane	\$745,000
09/29/2025	28 Cedar Street	\$520,000
09/29/2025	17 Governors Way #B	\$465,000
09/25/2025	21 Trinity Drive	\$515,000

Source: www.zillow.com / Compiled by Milford Free Press



The 3-bed, 1-bath, 1,504-square-foot house at 50 S Main Street in Milford recently sold for \$289,900. Image credit www.zillow.com

**Happy Thanksgiving!**

**COAN**  
HEATING & AIR CONDITIONING

MITSUBISHI ELECTRIC HEATING & AIR CONDITIONING

Specialists in Home Comfort & Energy Conservation

HEATING • AIR CONDITIONING • HOT WATER • INDOOR AIR QUALITY  
Heating Service Plans, Heating Install and Repairs & More!

Coan Bioheat® Fuel Delivery

With significantly reduced greenhouse gas emissions & lower carbon footprint, it's the most environmentally friendly heat fuel, and the safest.

196 West Central St., Natick • 508-653-5050 • 800-262-6462 • coanoil.com

BIOHEAT

**Templeman**  
TREE SERVICE, INC.

Serving the Community since 1980

**WINTER IS A GREAT TIME TO PRUNE WHILE TREES ARE DORMANT!**

Expert Hand Climbing Crews  
Removals • Pruning  
Stump Grinding • Cabling

**FAST FREE ESTIMATES**  
Fully Insured • Workman's Comp

**CONTACT US TODAY!**  
508-366-7693 • sales@templemantree.com  
MAA & TCIA Member

# Pet of the Month: Meet Dusty

Dusty is a lovely grey lady presently residing in the senior room of Milford Humane Society, but she's not a senior, just an old soul. Dusty is what some may call a Spirit Cat, she is quite shy and the master of disguise - sometimes you might not even notice she's in the room with you.



When Dusty first arrived at the shelter she was very nervous and these days she still takes time to trust people. But anyone who puts in the time and effort to gain her trust will be well rewarded. She is an absolute sweetheart. Once Dusty knows you, she loves nothing more than to receive pets and purr as she makes biscuits by the dozen. Dusty took her time adjusting to life in the shelter, so it is to be expected that she would also take some time to adjust being in a new home. Dusty would do best in a quiet home

either as an only pet or with a calm cat companion, and with a patient and understanding person(s) so she can adjust to her new surroundings at her own pace.

For information on meeting or the other cats at the Milford Humane Society please visit <https://www.milfordhumane.org/>

*Submitted by the Milford Humane Society*

**For information on Volunteer Opportunities please call the shelter at 508-473-7008**

**SOUR GRAPES** by Tim Jones

**Panel 1:** A girl with pink hair is talking to a dog. She says, "AESOP, I CALLED THE CELL PHONE COMPANY AND TOLD THEM I HATE THIS STUPID PHONE AND THAT I WANT A NEW ONE FOR FREE!"

**Panel 2:** The girl is talking to the dog. She says, "I ALSO TOLD THEM IF THEY DON'T GIVE ME A NEW PHONE FOR FREE, I'LL CALL ANOTHER CELL PHONE COMPANY AND SWITCH TO THEM!"

**Panel 3:** The girl is talking to the dog. She says, "WHAT DID THEY SAY?"

**Panel 4:** The girl is talking to the dog. She says, "THEY SAID IT'S MY CALL."

## Don't be left without like last year... November Early Buy Promotions!

# MULLALY MATERIALS

671 Quaker Hwy, Rt. 146A • Uxbridge, MA  
Call 508-883-0977



Fiberglass Reflective  
**SNOW STAKES**  
As Low As **89¢**

**GET PREPARED...**

Rakes, Tarps, Mix 2 Cycle Oil, Gas & Diesel Cans, Gloves, Etc.



**ICE MELT**  
by the bag or pallet  
**BULK DISCOUNTS**  
when purchased by the Pallet

- Snow Shovels • Bulk Salt • Washer Fluid • Fuel Treatment
- Shovels Long & Short • Handle Rakes Landscape Rakes
- Leaf Rakes • Pitch Fork • Edgers • Landscape Barrels
- Wheelbarrows 6, 8, 10 cubic foot • Seed & Fertilizer Spreaders
- Landscape Fabric: 3'x50' 4'x50', 4'x300' 6'x300'
- Gas & Diesel Cans • Bungie Cords • Backpack Sprayer
- Trimming String • Push Brooms • Dust Mask N95 Masks
- Assortment of Work Gloves • Safety Glasses Clear & Smoked Lens
- Ear Plugs • 2 Cycle Oil Mix .... And More!

**FOR ALL YOUR MATERIAL & LANDSCAPING NEEDS / PICK UP & DELIVERY**

**Seasoned Hard Wood**  
**Green Hard Wood • Kiln Dried**

CALL FOR PRICING

[www.mullalymaterials.com](http://www.mullalymaterials.com)

Free Delivery On Most Bulk Loads, Materials Are Subject To 6.25% Sales Tax. Visa / MasterCard / Cash /Check



Monday - Friday 7 AM - 4:30 PM  
Saturday 8 AM  
CLOSED SUNDAY

email:  
[mullalyconstruction@yahoo.com](mailto:mullalyconstruction@yahoo.com)  
FB @ Mullaly Contruction and Landscaping

## Milford Town Library Calendar of Events

80 Spruce Street, Milford • 508-473-2145 • MilfordTownLibrary.org • HOURS: Mon. – Thurs. 9-9 • Fri. 9-6 • Sat. 9-5 • Sun. CLOSED

### Holiday Hours

The library will close early on Wednesday, Nov. 26, at 1 p.m. and will be closed on Thanksgiving Day, Thursday, Nov. 27. The library will be open regular hours on Friday, Nov. 28, and Saturday, Nov. 29. The library staff wishes everyone a wonderful holiday.

### Sacrifice: The Heart of the Military – Quilt Exhibit

During November, The John W. Powers American Legion Auxiliary Unit #59 will sponsor a moving tribute to the men and women who serve our country. *Sacrifice: The Heart of the Military* is a traveling quilt exhibit that shares visual narratives of military service through American heritage quilts.

Accompanied by educational posters with historical photos, poetry, and military history, this exhibit offers a unique and meaningful way to reflect this Veteran's Day.

The quilts will be on display November 1-28, 2025. The exhibit is free and open to the public during library hours. A special reception will be held on Nov. 10 at 7 p.m. at the library.

### Intergenerational Chess Club: Open Play

Families, teenagers, millennials, boomers, centenarians and anything in between are invited to enjoy one of the world's greatest pastimes at the Milford Town Library on Saturday, Nov. 22, from 1 - 3 p.m. Games will begin no later than 1:15 p.m., please arrive by that time to participate.

- Basic chess knowledge is needed to participate.
- Players aged 8+ at all skill levels
- Chess sets provided
- Open-play: Play against whomever you wish among the participants.
- Casual format (No clocks)
- Player pre-registration is recommended but not required. Walk-ins accommodated as space allows. To pre-register, visit the library's events online events calendar, [www.milfordtownlibrary.org](http://www.milfordtownlibrary.org).

### English Classes

The library offers free drop-in classes for adults who want to learn and improve their English. Beginner classes are held on Tuesday and Thursday evenings from 7 - 8 p.m. An intermediate

class is held on Thursdays from 5:30 - 6:30 p.m. Classes are held on the lower level of the library in the ESL Classroom. Registration is not required. For more information, please call the Information Desk at 508-473-2145 ext. 2.

Las clases gratuitas sin cita previa para adultos que quieren aprender y mejorar su inglés comienzan el martes 14 de enero de 2025. Las clases para principiantes se llevan a cabo los martes y jueves por la noche de 7 a 8 p.m. Una clase intermedia se lleva a cabo los jueves de 5:30 a 6:30 p.m. Las clases se llevan a cabo en el nivel inferior de la biblioteca en el aula de ESL. No es necesario registrarse. Para obtener más información, llame al mostrador de información al 508-473-2145 x 2.

As aulas presenciais gratuitas para adultos que desejam aprender e melhorar seu inglês começam na terça-feira, 14 de janeiro de 2025. As aulas para iniciantes são ministradas nas noites de terça e quinta, das 19h às 20h. Uma aula intermediária é ministrada às quintas-feiras, das 17h30 às 18h30. As aulas são ministradas no nível inferior da biblioteca, na sala de aula ESL. O registro não é necessário. Para obter mais informações, ligue para o balcão de informações em 508-473-2145 x 2.

### Center Book Group

The Center Book Group meets next on Tuesday, Nov. 18, at 10 a.m. to discuss *The Celebrants* by Stephen Rowley.

In this novel, five friends who met and bonded while in college at Berkeley gather over a thirty-year timespan to throw "living funerals" for one another as a way to honor a classmate who died from a drug overdose

prior to their college graduation. Using dark humor and the bigheartedness that readers have come to expect from Rowley, *The Celebrants* really is a celebration of life.

Rowley is the author of *The Editor*, *The Dogs of Venice*, *Lily and the Octopus*, *The Gungle*, and *The Gungle Abroad*.

To reserve a copy of *The Celebrants* or to learn more about the Center Book Group, call 508-473-2145 ext. 2.

### Mary Bonina: Author Reading and Signing

The Friends of the Milford Town Library welcome back Mary Bonina to read from her new novel, *My Way Home* on Wednesday, Nov. 19, at 7 p.m.

Set in Boston, *My Way Home*, brings former teenage lovers Clare and Ray together after sixteen years apart. They'd been separated by the Vietnam war and the denial of a woman's choice. Clare has struggled privately to heal from the injustice she experienced as a teenager with an unplanned pregnancy, haunted for years by thoughts of what might have become of the child she was forced to give up for adoption. Just as she is feeling she has regained emotional stability and has moved on from that trauma-a desperately guarded secret, even from her husband-the father of the secret child reappears, back from Canada where he'd been living. Clare fears that the life she's made for herself and her family, could easily fall apart.

Mary previously published a memoir *My Father's Eyes* and several poetry collections including *Lunch in Chinatown*, *Clear Eye Tea* and *Living Proof*. Mary grew up in Worcester and spent time visiting relatives in Milford. In *My Father's Eyes*, Mary wrote of car-



ing for her father as this eyesight failed. Her poem "Drift" won the UrbanArts "Boston Contemporary Authors" prize and is engraved on a granite monolith, a permanent public art installation in the City.

Copies of *My Way Home* will be available for purchase.

### Food Pantry Spice Drive

The library will be spicing things up for the holidays by hosting a spice drive for the Daily Bread Food Pantry. Holidays taste better with flavor! Please bring unopened spices and place them in the blue bin located underneath the Friends book table near the main staircase.

### Lucky Day Bestsellers

We know how frustrating it can be to be on a waiting list for a book you're dying to read. Try your luck with our Lucky Day Bestsellers! Many of the most requested books will be available on a first come, first serve basis for a 7-day loan with one renewal. Lucky Day titles cannot be reserved. Look for the Lucky Day titles on the endcaps at the beginning of the fiction stacks.

### Mahjong at MTL

A Mahjong group meets twice a month at the Milford Town Library. This group welcomes players familiar to Mahjong to join for enjoyment of the game, not for high stakes competition! The group meets on select Tuesdays from 6 - 8 p.m. at the library in the Quarry Room, including Nov. 25 and Dec. 9.

Those who are interested can attend any of the meetings. Mahjong sets are provided.

POWERED BY PROPANE

TAKE LIFE OUTDOORS

Fireplaces & Fire Pits • Grilling • Generators  
Pool & Spa Heating • Outdoor Kitchens  
Patio Heating & Lighting • Home Heating

"Your Total Home Comfort Company"

Call today to make your life better  
with propane & ask about our NEW Customer Programs!

508.533.6561

info@medwayoilpropane.com  
medwayoilpropane.com

### Gallery of Arts & Crafts Fair

Hosted by The Milford High School After Prom Party Inc

Date: Saturday, November 29, 2025

Time: 9AM - 2PM

Adult Admission \$5 or \$3 with a nonperishable  
food or toiletry item

Student Admission \$1 ~ kids under 10 free

31 West Fountain Street - Cafe Entrance  
Milford, Massachusetts

Handmade~Jewelry~Crafts~Wood~Food~Baked Goods~Kids Items

# All-female Scouts BSA Troop 219 includes Milford girls

Troop 219 is one of the first all-female Scouts BSA troops in the area and includes members from Milford, Hopedale, Bellingham, and surrounding areas

Established in 2019, this troop is not led by the supervising adults, but by the scouts themselves. The scouts are given the responsibility and privilege to plan and execute all of their troop activities and projects. In 2019, leaders who had sons previously in Scouts BSA, wanted the same experience for their daughters and decided to start this troop. Scoutmaster Michele Duffy loves seeing her girls in Scouts BSA gain useful skills while earning their badges, and having fun with their fellow scouts.

For some of the Scouts in Troop 219, they were encouraged to join after watching and hearing about their older brothers going through the same program growing up. Many of the scouts said that "learning about campouts, fun activities, day trips, hiking and regular meetings in both scouts and cub scouts made all of it sound interesting".

One scout, having been in both Girl Scouts and Scouts BSA, said that while both provided essential skills, she enjoyed how the Scouts BSA focused more on the outdoors and survival skills like building a fire, first aid, and camping.

One priority of Troop 219 is for the scouts to do the plan-

ning and executing of their trips and projects rather than the advisors doing the work. In the past few years, the troop has attended the West Point Camporee in New York, gone camping and biking along the Cape Cod Canal, kayaking at Buck Hill Reservation, and attended their annual Week of Summer Camp at Camp Squanto in Plymouth. In addition to these trips, they also go camping every month. At these trips and during their regular troop meetings, the scouts gain many skills that are useful in all areas of life.

Many of the scouts agreed that being in this troop has taught them leadership, teamwork, safety, responsibility, and navigation. One thing shared by the scouts in Troop 219 is their dedication and love for the troop and the experiences gained, as stated by one of the scouts, "Scouts BSA is all that it lived up to be and even more."



The all-female Scouts BSA Troop 219 in uniform. Photo provided by Michele Duffy

## LIBRARY

continued from page 14

Questions? Please call the Information Desk at 508-473-2145 ext. 2.

### Milford Area Wordsmiths

Looking for a quiet, dedicated time and place where you can write? Join the Milford Area Wordsmiths writers' group! We provide a safe place for adults (18+) to write and even share your work if you desire. All levels are welcome, from first-time writers to published authors. All genres are welcome, too, from picture books to romantasy to nonfiction!

The group meets the first and third Monday of each month (except holidays) from 7 to 8:30 p.m. Drop-ins are welcome. Carol Allen, a first-time writer of children's books, lifelong bookworm, and recently retired middle-school teacher, serves as

facilitator of the Milford Area Wordsmiths. For more information, please call 508-473-2145, option 2.

### Ongoing:

Find great deals on gently used books for children, teens and adults at the Friends Book Store and book table, replenished weekly.

Donations for the Daily Bread Food Pantry can be dropped off in the blue bin by the Friends book table.

Community Puzzle Tables are always available in the adult services area.

### Upcoming:

The popular holiday wrapping station returns on December 1 and will run through Dec. 23. Wrapping paper, tissues, bows, tags, and space to wrap will be available FREE of charge while supplies last. We are NOT accepting donations of wrapping supplies this year.



Local Mortgage Lending. Trusted Guidance.

Whether you're buying your next home, building your dream house, or refinancing, UniBank's local mortgage lenders are here to help.

We'll put our expertise to work for you – offering personalized guidance and making the mortgage process feel a little less overwhelming and a lot more approachable. From your first home to your forever home – we're here to help.

### Let's Connect!

Visit [unibank.mymortgage-online.com](http://unibank.mymortgage-online.com) to connect with one of our trusted lenders today.

## UNIBANK

Connecting all offices:  
1.800.578.4270  
[www.unibank.com](http://www.unibank.com)



Member FDIC · NMLS #583135 Homeowners insurance required. Subject to credit approval. Other terms, fees, and conditions may apply.



**DECKS • KITCHEN REMODELS • ADDITIONS**  
**BATH REMODELS • ROOFING**  
**SIDING • WINDOWS • GUTTERS**  
**ENTRY DOORS • DORMERS • AND MORE!**

**774-573-9811**

FREE ESTIMATES • REFERENCES AVAILABLE • LICENSED & INSURED

# FREE PRESS

# Your Community. Your Stories. Your Support.

## *We are the Voice of Your Community!*

Since 2008, *Our Town Publishing* has proudly delivered *LocalTownPages*, *FREE PRESS* & *The YankeeXpress* to over 182,000 homes and businesses. We share hyper-local stories that connect and strengthen our communities.

With the rising costs of printing and postage, free community news is under pressure. With your support, we can continue delivering trusted local journalism to every resident and business in 28 towns, **AT NO COST**, right to your doorstep.

**PLEASE CONSIDER A DONATION TODAY.**  
*Every contribution, big or small, makes an impact!*

Your support is appreciated. If you have any questions about

**Our First Support Local Newspaper Campaign,**  
feel free to contact me.

*With gratitude,*  
*Jen Schofield, Publisher*  
[jenschofield@localtownpages.com](mailto:jenschofield@localtownpages.com)

*There's no better way to stay connected with what's happening in your community and support the future of trusted local journalism!*

**LocalTownPages.com**



**DONATE**  
by **PHONE**  
or **ONLINE**  
**TODAY!**



**SEND DONATION TO:**  
Local Town Pages  
9 Industrial Road, Suite 107, Milford MA 01757

**OR SCAN QR CODE**  
<https://bit.ly/SupportTheNewspaper>



# Warm your heart with winter harmonies at Exsultet's 'Baby It's Cold Outside' concert

Kick off the holiday season with the exquisite sounds of Exsultet as they present their annual winter concert. This year's performance, "Baby It's Cold Outside," features moments of ethereal beauty such as in the Hebrides Lullaby, the humor of Cold and Fugue Season, and classics like Santa Claus is Coming to Town. Celebrate the season's joyful moments and experience the warmth of music that brings families and friends together.



Concerts will be held on Friday, Dec. 5, at 7:30 p.m., Christ Lutheran Church, 113 Union St., Natick; and Sunday, Dec. 7, at 2 p.m., at First Congregational Church, 725 Washington Street, Holliston.

General admission tickets are \$20; students and seniors (65+) are \$15; and children 12 and under are free. Performances are not suitable for children under age 6. Tickets can be purchased

beginning in early November through our website ([www.exsultet.us](http://www.exsultet.us)) or at the door prior to the performance.

Whether you're a longtime concert-goer or joining us for the first time, this performance promises to be a memorable evening. Come and experience the magic of the season with songs that have become part of

our most cherished traditions. Let's warm up together, because Baby It's Cold Outside!

Exsultet! A Celebration of Voices is an auditioned women's ensemble based in Holliston, MA since 2013. Our concerts are not only filled with beautiful pieces but are thematic and tell a story from the music selections to the spoken poetry and

readings we use throughout the concert. Our mission is, and always will be, to create a safe and

inclusive place for any woman who wants to enrich her life with the wonder of singing.



The Milford Senior Center acknowledged National First Responders Day on Oct. 28. Photo credit: Theresa Knapp

## Donations needed for MYC After-School Thanksgiving dinner


The Milford Youth Center is seeking donations for its After-School Thanksgiving Dinner. Donations are due by Nov. 14.

Every year with the help of the community and local businesses, the MYC offers a meal to its after-school members, full of turkey (and other various meat options like chicken and ham), multiple side dishes, delicious desserts, and drinks

to celebrate everything we are thankful for.

Donations needed include beverages, pre-made desserts, side dishes, gift certificates, etc. We request an ingredient card with every donation for anyone with allergies.

If you are interested in donating, contact [jabrantes@milfordma.gov](mailto:jabrantes@milfordma.gov) for more information.



## CPR Etc.

**CPR, AED, First Aid Training  
Bloodborne Pathogen**

On-Site Training  
Companies • Schools • Private (in-home)  
No Class Too Small • Anytime, Anywhere

**Susan Tetreault**  
Licensed & Insured

**508-473-3630**  
[cpr\\_etc@comcast.net](mailto:cpr_etc@comcast.net)

# Mark's Transportation LLC

**CALL TODAY**  
for more information  
**561-654-9881**



**DRIVERS WANTED**  
30 Positions  
NOW AVAILABLE!

**Transport Students & Adults.**

**\$1,000 Sign-On Bonus\***

**NO CDL Required, 7D Certificate Only.**

**We'll help you get the Certification.**

**SPLIT SHIFTS: Early morning, mid/late afternoon.**

**Great job for retired person or someone needing part-time work.**

**Must be 21 or older with valid Driver's License.**



Office is located at  
51 East Main St., Milford, MA  
**OFFICE HOURS:**  
Mon-Fri, 9am-5pm

\*New applicants only; restrictions apply

SPORTS

# Scarlet Hawks Boys' Soccer a Top-10 squad

## Milford earned tourney bid with strong regular season

By Chris Villani  
Sports Writer

The Milford High boys' soccer team rolled through the regular season with only three losses, posting an 8-3-7 record that left the Scarlet Hawks in the state tournament and ranked 10th in the state.

"We had a few more draws than I would have wanted, but I think we overachieved," said Head Coach Antonio Pinto. "Overall, I was happy with how we performed."

The Scarlet Hawks' three regular season losses came against St. John's Prep and Oliver Ames, both ranked number one in their respective divisions, and a King Philip team that Milford beat when the two played a rematch. Pinto said he saw things really come together for his team over the final weeks of the season, when MHS won

four of five games and tied the other.

"We finally improved down the stretch, we started winning more games," Pinto said. "We were more offensively sound and we made less mistakes."

Senior Danny Da Silva was Milford's top point scorer this fall, finishing the regular season with eight goals and 12 assists. Da Silva also broke Milford's record for career points since the program joined the Hockomock League.

The middle of the field was another strength for Milford, with Henrique Lopes, Mayck Moreira, and Brunno Esteves.

"They are good at keeping the ball and keeping possession," Pinto said.

Gianelli Caccin, Lucas Coice, and Shane Caguana were all key contributors for the Hawks throughout the fall.

Marcos Da Silva, a sophomore, finished the year with nine assists. "Not many people could stop him in the one-v-one," his coach said. "He does a really good job finding the strikers and the wingers."

Being able to find production from more players as the year went on made the team stronger, Pinto said. "The depth is what improved the most. A lot of guys who were not playing much at the start of the year, they developed and they gave us some good minutes."

And, even though Pinto would have preferred fewer ties and more victories, he said he is happy his team was challenged throughout the campaign. "A tough schedule is always good. That is what we strive to do, to be ready for the tournament every year. Having a tough schedule helps us with that."



Danny Da Silva was once again a key piece of the Milford offense. Courtesy photo

**DIRECTV**

**Stream DIRECTV to any device - no satellite dish needed.**

Easily access live TV and thousands of streaming apps like Netflix, Max, Prime Video and more, with a click of a button.

Req's internet-connected Gemini device and separate paid subscriptions for 3rd party apps.

**CHOICE™ PACKAGE** | **\$89.99\*** /MO. FOR 24 MO + TAX & FEES.

(\$117.98/mo. w/ req'd Regional Sports Fee of up to \$17.99/mo. & \$10/mo. Gemini lease fee). Cancel anytime.

\*New approved residential customers only. Service renews monthly unless you cancel. Cancel anytime by calling 800-531-5000 or online. Add'l fees may apply to non-qualified customers. Device subject to Equipment Lease agmt. Add'l fee(s) may apply if equip. not returned. Credit card req'd. Restr's apply.

**Contact your local DIRECTV dealer!**

IVS Holdings  
**888.602.7946**

**DIRECTV DEALER**

Service subject to DIRECTV terms and conditions (see https://www.directv.com/legal/legal-policy-center/). Available only in the U.S. (excludes Puerto Rico and U.S.V.I.). Some offers may not be available through all channels and in select areas. Different offers may apply for eligible multi-dwelling units. DIRECTV App: Req's compatible device and data connection or high-speed internet; internet charges may apply. Requires high-speed internet. Minimum internet speed of 8Mbps per stream recommended for optimal viewing. Pricing: CHOICE \$117.98/mo. for 2 years. After 2 years, continues month to month at then-current prevailing prices unless canceled. Prices reflect base package prices plus one req'd. \$10/mo. Gemini lease fee and, for CHOICE Pkg. or higher, a Regional Sports Fee (RSF) of up to \$17.99/mo. varies by location. May be lower in some areas. \$10/mo. for each additional device added to your account. Additional Fees & Taxes: State and local taxes or other governmental fees and charges may apply including any such taxes, fees or charges assessed against discounted fees or service credits. See directv.com/directv-fees/ for additional information. DIRECTV Svc Terms: Subject to Equipment Lease & Customer Agreements. Taxes, surcharges, add-on programming (including premium channels), DIRECTV TECH PROTECT (www.directv.com/techprotect) Lease Agreement and transactional fees, are not included in two-year price guarantee. Visit directv.com/legal/ or call for details. Equipment Non-Return-Fees: If service is canceled you must return all leased devices to avoid a non-return fee of \$120 per device. Regional Sports & Local Channels: Regional sports available with CHOICE Pkg. and above. Not available in select areas. Channels vary by package & billing region. Device may need to be in billing region in order to view. Limits: Programming subject to blackout restrictions. All programming, terms & restrictions subject to change at any time without notice. See directv.com for details. Premium Channels Offer: Max. Access Max through Max app or max.com with your DIRECTV log-in credentials. Visit directv.com to verify/create your account. Use of Max is subject to its own terms and conditions, see max.com/terms-of-use for details. To learn more, visit directv.com/max. Paramount+ with SHOWTIME: Access Paramount+ with SHOWTIME streaming plan through Paramount+ app or paramountplus.com with your DIRECTV log-in credentials. Visit directv.com to verify/create your account. Use of Paramount+ is subject to its own terms and conditions, see viacombs.legal/us/en/plus/sub-terms for details. Access to Paramount+ requires a subscription to Paramount+ with SHOWTIME and access to your local CBS affiliate. To learn more, visit directv.com/paramountplus. General Terms: Programming and content subj. to change. Offer requires account to stay in good standing. Upon cancellation of your video service you may lose access to Max and Paramount+. Cancel your premium channels online at directv.com or by phone at 800-531-5000. If you cancel your service, you will no longer be eligible for this offer. Limits: Access to one Max account and one Paramount+ account per DIRECTV account holder. May not be stackable w/other offers, credits or discounts. Max and related elements are property of Home Box Office, Inc. Incomax and related channels and service marks are the property of Home Box Office, Inc. SHOWTIME is a registered trademark of Showtime Networks Inc., a Paramount Company. Paramount+ and related marks are trademarks of Paramount Pictures Corporation. All rights reserved. Starz and related channels and service marks are the property of Starz Entertainment, LLC. Visit starz.com for airdates/times. MGM+ is a trademark of Metro-Goldwyn-Mayer Lion Corp. © 2025 DIRECTV. DIRECTV and all other DIRECTV marks are trademarks of DIRECTV, LLC. All other marks are the property of their respective owners.

**Thanks for Your Donations to the Friends of the Milford Town Library!**

WE CAN ACCEPT	WE CANNOT ACCEPT
✓ Hardcover & paperback Books	• Magazines X
✓ Fiction & nonfiction	• VHS or cassette tapes X
✓ Trade paperbacks	• Textbooks older than 5 years X
✓ Bibles	• Travel books older than 3 years X
✓ CDs, DVDs, vinyl records	• Computer books older than 3 years X
✓ Audiobooks on CD (with all CDs in case)	• Reader's Digest condensed books X
✓ Puzzles, games, videogames	• Any ripped, water damaged, smoke damaged, scribbled-in, dirty, moldy, or mildewed books X
✓ Posters & book-related toys	

**Drop-off Procedures**

- You may drop off up to 10 boxes per week (due to space limitations).
- Place bags or boxes on the cart located near the elevator.
- All materials should be in a condition you would want to purchase.

**FRIENDS OF THE MILFORD TOWN LIBRARY**

[www.milfordtownlibrary.org/friends-library](http://www.milfordtownlibrary.org/friends-library)

SPORTS

# MHS Girls' Soccer caps season with tourney bid

**Scarlet Hawks made first playoff trip in 7 years**

By Chris Villani  
Sports Writer

The start of the season was a little bumpy for the Milford High girls' soccer team. The Scarlet Hawks lost three key players to injury within the first two games. Even as they got healthier later in the season, Milford was on the tournament bubble. But a strong finish, coupled with a tough schedule, landed MHS in the state playoffs for the first time in seven years.

"The girls are excited," Head Coach Lou Colabello said, adding he challenged his team heading into the closing weeks.

"I put them on a mission," he said. "I told them 'We have got to do this for the seniors, number one. Number two, it's been awhile, but you just have to believe. I saw them start to believe they belonged in the tournament.'"

Colabello said he saw the development in this team throughout the season, particularly when measured up against some of the top teams in the vaunted Hockomock League.

"We started to compete pretty well with the big clubs, which we have not done in the past few years," he said. "Our league gets a lot of respect in the playoff seeding because the talent in the league is quite high, and we put ourselves in position to make the playoffs."

Junior striker Kyla Nashawaty continued to be a star on offense for MHS.

"She is double or triple teamed all of the time," Colabello said. "And she still creates and she is still able to score."

Both Nashawaty and fellow captain Ava Baglione, a senior, were offensive standouts for the Scarlet Hawks.

Boosting Milford's prowess was a freshman, striker Anela Lefter. "She is the best freshman I have seen in years," Colabello said. "This kid is a phenom. She had 16 assists and she has a cannon from center midfield. She just loves to dish the ball and she makes her teammates better."

On defense, senior Chloe Murdock returned on goal and Colabello said she came into

**Milford High School girls' soccer is in the state playoffs for the first time in seven years**



A strong offense had Milford's girls soccer team in the state tournament for the first time in seven years. Courtesy photo

her own this year with a goals against average hovering around two.

"She is very athletic and she keeps us in games," the coach said.

The success of the offense took some pressure off the defense, Colabello added; and seniors Isabella Loscerbo and

Tayla Seri, along with sophomore Julianna Senna, were able to shine on that side of the field.

Milford's third captain, Kate Kearnan, also proved to be a

leader on defense and in the midfield. "If I could ever instill her aggressiveness and desire

and ability to everybody else on the team," Colabello said, "we would be really good."



Courtesy photo

*Happy Thanksgiving* ... from our Home to Yours!

**Call us for all your Tire and Mechanical Needs!**

Foreign and Domestic, tune ups, brakes. Exhaust, struts, shocks, wheel alignments, batteries, front end work, water pumps, alternators, starters, transmission and radiator flush services....etc



**CHARLIE'S TIRE & SERVICE CENTER**

*Now in our 48th Year!*

825 So. Main St., Rte. 126, Bellingham, MA 02019  
508-883-1211 • www.CharliesTires.com

*Consigli Funeral Home & Ruggiero Funeral Home, Inc.*

**David A. Consigli**  
www.consigli-ruggierofuneralhome.com

Tel. 508-473-0513 • Toll Free 1-800-675-0513 • Fax 508-634-3662  
Email: Dave@ConsigliRuggieroFuneralHome.com  
46 Water Street, P.O. Box 513, Milford, MA 01757



Kevin Meehan  
Owner

IF YOU CAN  
DREAM IT  
YOU CAN  
DRIVE IT!

# IMPERIAL CARS.com



2,000 VEHICLES AT ALL TIMES  
FOUR DEALERSHIPS // SEVEN BRANDS

SALES: M-TH 9-9, FRI & SAT 9-6, SUN 12-6  
SERVICE: M-F 7:30-6, SAT 7:30-5

**508-488-2382**

8-18 UXBRIDGE ROAD (ROUTE 16) MENDON, MA 01756 // 300 FORTUNE BLVD. MILFORD, MA 01757



## WE'LL GIVE YOU YOUR FIRST 3 MONTHS' PAYMENTS\*



\*Purchase any new or used vehicle and if you choose, we'll give you a discount equal to your first 3 months of payments. Payment total will be deducted from selling price and payments not to exceed \$300/month. Cannot be combined with any other discounts or promotion. Ends: 11/30/2025.

<p><b>CAR FAX ONE-OWNER VEHICLES</b></p> <p>760 ONE-OWNER VEHICLES IN STOCK!</p>		<p><b>2022 CHEVY EQUINOX LT</b></p> <p>AS LOW AS \$68/WK</p> <p>#D15356 • ALLOYS, AWD, TURBO</p> <p>NEW RETAIL PRICE: <del>\$35,190</del>   <b>WHOLESALE PRICE: \$17,977</b></p>	<p><b>2023 KIA SPORTAGE</b></p> <p>AS LOW AS \$110/WK</p> <p>#48028 • EX TRIM, NAV, ALLOYS</p> <p>NEW RETAIL PRICE: <del>\$35,290</del>   <b>WHOLESALE PRICE: \$25,677</b></p>	<p><b>2022 FORD F-150 XLT 4x4</b></p> <p>AS LOW AS \$112/WK</p> <p>#124-345A • SUPERCREW, CPO</p> <p>NEW RETAIL PRICE: <del>\$46,250</del>   <b>WHOLESALE PRICE: \$29,977</b></p>	<p><b>2022 FORD EXPLORER 4x4</b></p> <p>AS LOW AS \$104/WK</p> <p>#P18161 • XLT, HEATED SEATS</p> <p>NEW RETAIL PRICE: <del>\$45,765</del>   <b>WHOLESALE PRICE: \$28,977</b></p>	<p><b>2021 JEEP WRANGLER 4x4</b></p> <p>AS LOW AS \$117/WK</p> <p>#D15410 • UNLIMITED SPORT, 8" LCD</p> <p>NEW RETAIL PRICE: <del>\$49,810</del>   <b>WHOLESALE PRICE: \$32,977</b></p>
<p><b>2024 CHRYSLER PACIFICA</b></p> <p>AS LOW AS \$177/WK</p> <p>#D15570 • SUNROOF, LEATHER</p> <p>NEW RETAIL PRICE: <del>\$55,265</del>   <b>WHOLESALE PRICE: \$48,977</b></p>	<p><b>2023 TOYOTA TACOMA 4x4</b></p> <p>AS LOW AS \$131/WK</p> <p>#TP6216R • SR5 TRIM, DBL CAB</p> <p>NEW RETAIL PRICE: <del>\$42,605</del>   <b>WHOLESALE PRICE: \$36,977</b></p>	<p><b>2021 DODGE DURANGO GT</b></p> <p>AS LOW AS \$120/WK</p> <p>#D15590 • ALLOYS, AWD, V6</p> <p>NEW RETAIL PRICE: <del>\$49,595</del>   <b>WHOLESALE PRICE: \$33,677</b></p>	<p><b>2024 GENESIS GV70 3.5T</b></p> <p>AS LOW AS \$191/WK</p> <p>#P18261 • NAV, HEATED LEATHER</p> <p>NEW RETAIL PRICE: <del>\$64,700</del>   <b>WHOLESALE PRICE: \$51,977</b></p>	<p><b>2023 TOYOTA CAMRY SE</b></p> <p>AS LOW AS \$99/WK</p> <p>#TP6159 • APPLE CARPLAY, ALLOYS</p> <p>NEW RETAIL PRICE: <del>\$38,625</del>   <b>WHOLESALE PRICE: \$26,977</b></p>	<p><b>2023 CHEVY SILVERADO 4x4</b></p> <p>AS LOW AS \$127/WK</p> <p>#C47486 • CUSTOM, 2.7L TURBO</p> <p>NEW RETAIL PRICE: <del>\$54,180</del>   <b>WHOLESALE PRICE: \$35,377</b></p>	<p><b>2021 NISSAN ROGUE AWD</b></p> <p>AS LOW AS \$71/WK</p> <p>#D15340 • SV TRIM, 18" ALLOYS</p> <p>NEW RETAIL PRICE: <del>\$31,710</del>   <b>WHOLESALE PRICE: \$17,977</b></p>
<p><b>2024 CHEVY TRAX SUV</b></p> <p>AS LOW AS \$82/WK</p> <p>#47621A • ACTIVE TRIM, TURBO</p> <p>NEW RETAIL PRICE: <del>\$28,565</del>   <b>WHOLESALE PRICE: \$21,977</b></p>	<p><b>2022 TOYOTA TUNDRA 4x4</b></p> <p>AS LOW AS \$145/WK</p> <p>#TM25-623A • SR5, ALLOYS, V6</p> <p>NEW RETAIL PRICE: <del>\$58,405</del>   <b>WHOLESALE PRICE: \$39,977</b></p>	<p><b>2022 JEEP CHEROKEE 4x4</b></p> <p>AS LOW AS \$85/WK</p> <p>#D15428 • LATITUDE LUX, SUNROOF</p> <p>NEW RETAIL PRICE: <del>\$34,400</del>   <b>WHOLESALE PRICE: \$22,977</b></p>	<p><b>2024 HYUNDAI TUCSON SEL</b></p> <p>AS LOW AS \$85/WK</p> <p>#TP6116 • AWD, HEATED SEATS</p> <p>NEW RETAIL PRICE: <del>\$36,750</del>   <b>WHOLESALE PRICE: \$23,977</b></p>	<p><b>2022 TOYOTA COROLLA LE</b></p> <p>AS LOW AS \$74/WK</p> <p>#TP6135 • 30/38 MPG CITY/HWY</p> <p>NEW RETAIL PRICE: <del>\$26,569</del>   <b>WHOLESALE PRICE: \$20,977</b></p>	<p><b>2023 SUBARU CROSSTREK</b></p> <p>AS LOW AS \$92/WK</p> <p>#25272A • LIMITED, LEATHER</p> <p>NEW RETAIL PRICE: <del>\$34,265</del>   <b>WHOLESALE PRICE: \$25,977</b></p>	<p><b>2024 TOYOTA RAV4 LE SUV</b></p> <p>AS LOW AS \$96/WK</p> <p>#TP6094 • 27/34 MPG CITY/HWY</p> <p>NEW RETAIL PRICE: <del>\$34,960</del>   <b>WHOLESALE PRICE: \$26,977</b></p>
<p><b>2022 FORD EDGE SEL</b></p> <p>AS LOW AS \$92/WK</p> <p>#P18138 • 2.0L TURBO, SUNROOF</p> <p>NEW RETAIL PRICE: <del>\$40,395</del>   <b>WHOLESALE PRICE: \$25,977</b></p>	<p><b>2023 VW JETTA 1.5T SE</b></p> <p>AS LOW AS \$68/WK</p> <p>#D14951L • HEATED LEATHER</p> <p>NEW RETAIL PRICE: <del>\$29,550</del>   <b>WHOLESALE PRICE: \$18,977</b></p>	<p><b>2021 LINCOLN CORSAIR</b></p> <p>AS LOW AS \$96/WK</p> <p>#P18001 • SUNROOF, LEATHER</p> <p>NEW RETAIL PRICE: <del>\$46,645</del>   <b>WHOLESALE PRICE: \$26,977</b></p>	<p><b>2022 FORD BRONCO 4x4</b></p> <p>AS LOW AS \$170/WK</p> <p>#C18031 • TURBO, BIG BEND, NAV</p> <p>NEW RETAIL PRICE: <del>\$54,995</del>   <b>WHOLESALE PRICE: \$47,977</b></p>	<p><b>2022 SUBARU OUTBACK</b></p> <p>AS LOW AS \$85/WK</p> <p>#D15211 • AWD, HEATED SEATS</p> <p>NEW RETAIL PRICE: <del>\$34,695</del>   <b>WHOLESALE PRICE: \$23,977</b></p>	<p><b>2025 MERCEDES GLA 250 SUV</b></p> <p>AS LOW AS \$145/WK</p> <p>#TP5839 • 2.0L TURBO, LEATHER</p> <p>NEW RETAIL PRICE: <del>\$50,800</del>   <b>WHOLESALE PRICE: \$40,977</b></p>	<p><b>2024 HYUNDAI SONATA</b></p> <p>AS LOW AS \$85/WK</p> <p>#TP5397 • 25/36 MPG CITY/HWY</p> <p>NEW RETAIL PRICE: <del>\$28,686</del>   <b>WHOLESALE PRICE: \$23,977</b></p>
<p><b>2024 CHEVY COLORADO</b></p> <p>AS LOW AS \$138/WK</p> <p>#47843 • LT TRIM, 4X4, ALLOYS</p> <p>NEW RETAIL PRICE: <del>\$44,290</del>   <b>WHOLESALE PRICE: \$38,977</b></p>	<p><b>2024 HONDA CIVIC SPORT</b></p> <p>AS LOW AS \$96/WK</p> <p>#D15237 • 30/37 MPG CITY/HWY</p> <p>NEW RETAIL PRICE: <del>\$34,190</del>   <b>WHOLESALE PRICE: \$26,377</b></p>	<p><b>2022 BUICK ENCORE AWD</b></p> <p>AS LOW AS \$81/WK</p> <p>#P18035A • GX PREFERRED, 1.3L</p> <p>NEW RETAIL PRICE: <del>\$32,225</del>   <b>WHOLESALE PRICE: \$22,977</b></p>	<p><b>2022 MAZDA CX-5 2.5 S</b></p> <p>AS LOW AS \$81/WK</p> <p>#P17904 • AWD, ALLOYS, SPOILER</p> <p>NEW RETAIL PRICE: <del>\$29,895</del>   <b>WHOLESALE PRICE: \$22,977</b></p>	<p><b>2024 BMW X1 xDrive28i</b></p> <p>AS LOW AS \$124/WK</p> <p>#TP5673 • AWD, TWIN TURBO, NAV</p> <p>NEW RETAIL PRICE: <del>\$51,595</del>   <b>WHOLESALE PRICE: \$34,977</b></p>	<p><b>2022 RAM 1500 BIG HORN</b></p> <p>AS LOW AS \$127/WK</p> <p>#TP6030 • 4X4, 3.6L V6, ALLOYS</p> <p>NEW RETAIL PRICE: <del>\$45,710</del>   <b>WHOLESALE PRICE: \$35,977</b></p>	<p><b>2022 TOYOTA HIGHLANDER</b></p> <p>AS LOW AS \$124/WK</p> <p>#TP5646 • XLE TRIM, ALLOYS, CPO</p> <p>NEW RETAIL PRICE: <del>\$45,775</del>   <b>WHOLESALE PRICE: \$34,977</b></p>

WHY PAY THE DIFFERENCE IF YOU CAN'T TELL THE DIFFERENCE?

**BAD CREDIT? DON'T SWEAT IT!**  
We finance your future - not your past.

WE WORK WITH OVER 60 BANKS AND CREDIT UNIONS TO GET YOU THE **LOWEST RATE POSSIBLE!**

"We sell more - so you save more!"



Mike Penner  
General Manager

**SEVEN-DAY VEHICLE EXCHANGE PROGRAM**

SALE ENDS 11/30/2025. SOME RESTRICTIONS APPLY. THIS OFFER IS NOT VALID ON PRIOR SALES AND IS BASED ON THE MSRP, AND NOT COMBINABLE WITH ANY OTHER DISCOUNT, PROMOTIONS, OR INCENTIVES. PRICE LISTED INCLUDES ALL APPLICABLE MANUFACTURER REBATES (NOT EVERYONE WILL QUALIFY) AND IMPERIAL DISCOUNTS INCLUDING A \$1,000 IMPERIAL TRADE ASSISTANCE BONUS FOR A QUALIFYING 2014 OR NEWER TRADE. SEE US FOR DETAILS. ADVERTISED PRICE DOES NOT INCLUDE TAX, TITLE, REGISTRATION, DOCUMENTATION OR ACQUISITION FEES AND CANNOT BE COMBINED WITH ANY OTHER DISCOUNTS OR PROMOTIONS. WEEKLY PAYMENTS CALCULATED WITH AN ESTIMATED DOWN PAYMENT OF \$2,999 CASH OR TRADE. NOT RESPONSIBLE FOR TYPOGRAPHICAL ERRORS. CALL 1-508-488-2382 TO SEE WHICH REBATES YOU QUALIFY FOR.