

GOLD SPONSOR



A special pull-out section from the publishers of

The Yankee Xpress
BLACKSTONE VALLEY Xpress

Wachusett
FREE PRESS

Summer Guide 2026



ISSUE SPONSOR



ALTITUDE ROOFING

A special thank you to our sponsors for helping to bring this section to our communities.

Be part of an inclusive, creative community!



ValleyCAST

Making Arts & Culture Happen in the Valley!

The Alternatives' Whitin Mill Complex:

Dennis H. Rice Community Plaza

GB & Lexi Singh Performance Center

Spaulding R. Aldrich Heritage Gallery

30-70 Douglas Road
Whitinsville, MA

openskycs.org | 508-234-6232

Our facilities are handicap accessible.

What's happening now: openskycs.org/news-events

Connect with us on Social Media: linktr.ee/valleycast



- Art Gallery Exhibits
- Sculpture in the Plaza
- Theater Performances
- One Act Play Festivals
- Art Workshops & Classes
- Free Summer Concert Series
- Art & Music Makers Festivals

and much, much more!



ValleyCAST's mission is to foster a creative and engaged community in the Historic Blackstone Valley that is inclusive and supportive of all people with and without disabilities. ValleyCAST is the arts & culture arm of Open Sky Community Services.



Take Down the Wall Presents: OPEN MIC NIGHTS

TDTW Open Mic is an inclusive opportunity for musicians, poets and performers of all abilities - **ALL are welcome!**

Have fun with monthly themes, meet new people, and share your talent in this encouraging environment. **Performers, please come early to sign up!**

2nd Saturdays:
July 11
August 8
September 12

Sign ups begin 5:30pm
Theater opens 6:00pm



Volunteer Opportunities

Volunteers needed for our monthly Open Mic Nights:

- set up/breakdown crew
- stagehands
- concessions assistant
- set design
- and more!

Sign up here to be a Set Design Crew member: openskycs.org/setdesign

Interested? Please contact michelle.benjamin@openskycs.org

Join Club 21 Central Mass!

We are seeking members of the community to partner with individuals with intellectual/developmental disabilities and mental health challenges as Discovery Members in our Club 21 program.

- Do you enjoy meeting new people and building friendships?
- Are you interested in getting to know your community?
- Do you want to make a difference in someone's life?

If you said "Yes" to any of these, contact us for a no obligation informational meeting at openskycs.org/discoverymembers or scan the QR code.



For more information about these opportunities and more visit openskycs.org/communitymembership

Summertime

... and the reading is easy!

RECOMMENDED READS BY DEBRA HORAN, OWNER OF BOOKLOVERS' GOURMET, WEBSTER

Summer is coming! What better time of year to sit back and kick off your shoes (or flip-flops) and dive into a great book?

Let's start with some obvious suggestions that give all the summer vibes. *Rules for the Summer* by NYT bestselling author Meghan Quinn about upended plans, a game of truth or dare and unexpected romance. *One Week Later* by KJ Micciche involves two writers, one a romance novelist and the other an aspiring author, who unknowingly write books about their seven-day love affair that ended with mixed signals. When one of them gets accused of being a copycat, they need to reconnect to set the record straight,

but have they both really moved on? Continuing on the romance theme, *Love Song* by Elle Kennedy is a standalone romance featuring the next generation of Off-Campus characters, where

one unforgettable summer changes everything.

For the summer armchair traveler, there are plenty of picks to choose from including *The View from Lake Como* by Adriana Trigiani, a Publishers



Illustration by Rowan Potter, an artist who borrows the visual action and energy of comics to create their illustration work. (@rozzpot_ter on Instagram)

Weekly Best Book of Summer choice. Fleeing to her ancestral home in Carrara, Italy, recently divorced,

SUMMER READS
continued on page 4



Welcome to our Summer Guide 2026. The information listed here is not meant to be exhaustive but is intended to be a great place to start for summer fun. We had the pleasure of working with the students in the Senior Portfolio Illustration class at Massachusetts College of Art and Design for the artwork in our Summer Guide. In March and April, we worked with the class to invoke feelings of "summer fun" for the Summer Guide centerspread but also in the illustrations you will see throughout.

On the cover: Illustration by Coni Cao
Coni Cao is an illustrator who creates art to bring smiles to those who see themselves in her pieces. View her website at www.conicao.art.

ALTITUDE ROOFING

Residential

Commercial



AltitudeRoofingMA.com

508.963.7794

SHINGLE • METAL • SLATE • MEMBRANE

SUMMER READS

continued from page 3

dutiful daughter Jess is swept into a world of marble, art and possibility as she uncovers truths about her family history and falls for a passionate artist. Staying a bit longer in Italy, you can turn to *The Amalfi Curse*, featuring a hunt for sunken treasure and forbidden love plus some powerful witchcraft by Sarah Penner. For another taste of magic and pastries, take a nibble at *The Mysterious Baker on Rue de Paris* by Evie Woods. Edie leaves everything behind in Ireland for her dream job at a bakery in Paris. Except the bakery isn't in Paris- and neither is Edie.

Turning to books about books, we have *Storybook Ending* by Moira Macdonald, a charming story about friendship, community and the magic that happens in bookstores when an anonymous note left in a book finds the wrong recipient. *This Book Made Me Think of You* by Libby Page proves the adage that the right book in the hands of the right person at exactly the right moment can change

their life forever. Perennial best-selling author and most popular storyteller of our time, James Patterson, teams up with his wife Susan to pen *The Mother-Daughter Book Club*, a follow-up to *Things I Wish I Told My Mother*. An emotional reunion of longtime college friends and their daughters takes place on the spectacular shores of Italy's Lake Como and is all about the stuff of life.

Specifically for animal lovers, you'll find *Cat's People* by Tanya Guerrero, a sweet tale that will remind you of the magic of found family, the power of small acts of kindness and how strangers bond over their desire to care for an ailing cat. *Dog Person* by Camille Pagan is about an elderly dog named Harold who is determined to help his grieving owner. This book offers a much-needed reminder that love is always worthwhile.

For younger readers, try *Anna-Jane and the Endless Summer* by Paige Classey, a nail-biter survival story that is not your average summer

camp tale. Written journal style in short prose lines, this book is appropriate for ages 8-12. *How Moon Fuentez Fell in Love with the Universe* by Raquel Vasquez Gilliland follows 17-year-old Star Fuentez who reaches social media stardom while her polar-opposite twin, Moon, becomes "merch girl" on a tour bus full of beautiful influencers and the

grumpy but attractive Santiago Philips. A gorgeous, hopeful book about spirituality and self-acceptance. Sarah

Dessen, bestselling author of over a dozen novels for teens has a brand new release *Change of Plans*, "a warm summer romance that's a fortifying inter-

pretation of self-transformation. . . . a delightfully layered, big-hearted novel."

– Publishers Weekly, STARRED REVIEW

Nothing says summer like baseball! *The Church of Baseball* by Ron Shelton is about the making of "Bull Durham" and how the author turned his minor league love triangle into the greatest sports movie of our time. You'll learn about the process of moviemaking, screenwriting, casting and more! For an illustrated celebration of baseball's rich history, you'll want to pick up *The Ballpark and Beyond* by Todd Radom. He takes readers on a captivating journey that spans 150 years of baseball history, on and off the field. There is a trove of discoveries on every page with lots of great illustrations.

These are just a few recommendations to get you started. Be sure to check out more at your local bookstore or library. Happy Summer and Happy Reading!

Visit bookloversgourmet.com, bookshop.org/shop/bookloversgourmet or libro.fm/bookloversgourmet for more information.



Illustration by Moogy. An Illustrator who works in both physical and digital media. You can reach them at moogyillustration.com

CONNECT WITH WATERS FARM FOR ACTIVITIES & EVENTS

Events

View details at watersfarm.org/events.

June

- 14 Coffee with the Cows, Open House
- 21 Father's Day Antique Farm Tractor Pulls

July

- 12 Open House & Antique Farm Tractor Pulls

August

- 8-9 Picker's Paradise Barn Sale
- 9 Open House & Antique Farm Tractor Pulls
- 15-16 Picker's Paradise Barn Sale

September

- 12 Apple Crisp Preparation Day
Offsite at First Church, 307 Boston Road, Sutton, MA
- 13 Antique Farm Tractor Pulls

SAVE THE DATE!

46th Annual Waters Farm Days
Saturday, October 17 &
Sunday, October 18

Visit Us On Site & Online

Waters Farm in Sutton, MA

Darling Barn: 25 Waters Road
Farmhouse: 53 Waters Road

Website

watersfarm.org

Facebook & Instagram

@watersfarmpreservationinc

Volunteer with Us

Waters Farm Work Days are a great opportunity to gain community service hours while helping a local, all-volunteer, nonprofit living history center. Learn more at watersfarm.org/supportus/volunteering.



HELP FINISH OUR VISITOR CENTER

Waters Farm is in the final phase of fundraising. Learn more at watersfarm.org/supportus.

Breweries, wineries & distilleries

67 Degrees Brewing Co.
Wrentham Outlets Beer Garden
Faneuil Hall Beer Garden
508-507-7318
67degreesbrewing.com

Agronomy Farm Vineyard
338 Ware Corner Rd., Oakham
978-618-2668
agronomyfarmvineyard.com

Corey and Marissa O'Connor came up with the idea for a vineyard on their honeymoon in Tahiti. The result: a farm and vineyard producing wine and syrup. Sweet goodness!

Altruist Brewing Company

559 Main St., Sturbridge
774-241-8022
altruistbrewing.com
Enjoy hand-craft-ed recipes in an old mill building. Love the beer!

Armsby Abbey

144 Main St., Worcester
508-795-1012
armsbyabbey.com

Bay State Brewing Company

112 Harding St., Worcester
774-420-2233
baystatebrewing.com
Producing small batch, distinctive and drinkable, hand-craft-ed Lagers and Ales using only the best malts, hops, water and yeast available.

Boston Beer Works

100 Wattaquodock Hill Rd., Bolton
978-779-5521
boltonbeerworks.com
Flagship beers include Bolt 117 and Mother Apple IPA.

Brimfield Winery & Cidery

35 Main St., Brimfield
413-245-3436
brimfieldwinery.com
Seasonal outdoor winery for tasting and relaxing with friends and family.

Broken Creek Vineyard

614 South St., Shrewsbury
508-925-5617
brokencreekvineyard.com
Family-owned, 40-acre vineyard and winery, offering a variety of wines produced from their estate-grown grapes, as well as grapes imported from Chile, South Africa, California and Washington.

Clover Road Brewing Company

312 Main St., Hudson
cloverrdbrewing.com

Cold Harbor Brewing

66 Otis St., Westborough
508-329-1790
coldharborbrewing.com
Cold Harbor Brewing began in 2015 with a strong commitment to being community-oriented, family-run and an intense focus on crafting the

highest-quality beer possible. Its name is inspired by the locally significant Cold Harbor Brook, a tributary of the Assabet River.

Common Ground Ciderworks

31 E. Brookfield Rd., No. Brookfield
508-637-1059

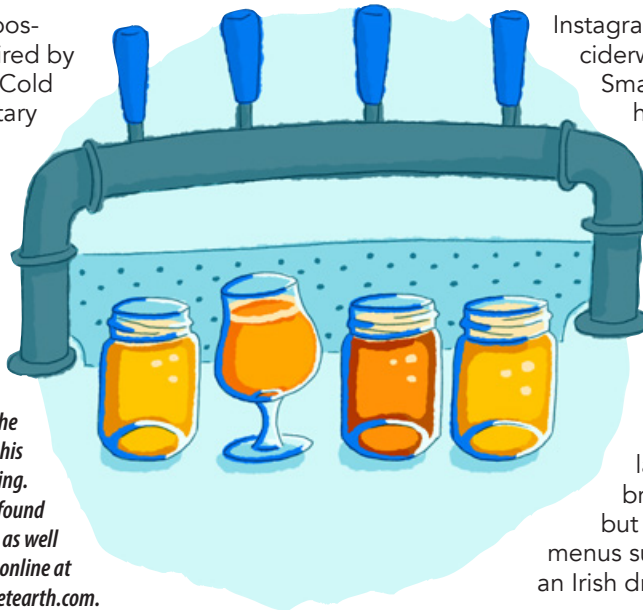
Illustration by Matthew

E. Austin - an author-illustrator from Milford,

Mass. His comics, which he distributes as zines, combine his interests in sci-fi and cartooning.

Matthew and his work can be found at art markets and zine fests as well

as online at someoneonthisplanetearth.com.



Instagram/commonground-ciderworks

Small batch, hand-crafted hard cider, seltzer, wine and beer.

CraftRoots Brewing

4 Industrial Rd., Milford
508-381-1920
craftrootsbrewing.com

Their ingredients are grown on small farms in New England. In the taproom bring your own food, but order from their beer menus such as a blonde ale or an Irish dry stout.

Dirigible Brewing Company

24 Porter Rd., Littleton
978-506-5146
dirigiblebrewing.com
Featuring dog-friendly taproom (dogs drink free water all night), live entertainment, special events, and more.

Flying Dreams Brewing Co. & Taproom

277 Main St., Marlborough
508-926-8251
flyingdreamsbrewing.com
Got a dream brew? Chances are Flying Dreams Brewing has it.

BREWS

continued on page 6



GOURMET NUT SHOP

OVER 100 DIFFERENT VARIETIES
FINE NUTS • SNACKS
• CANDIES • DRIED FRUITS

Taste The Difference Quality Makes

We will have plenty of specials on candies, nuts and especially,

PENNY CANDY

\$200 OFF

any purchase of \$15 or more

Must not be combined with other special offers. Offer with coupon expires August 31, 2026.



Arcade Industries Inc.

205 Southbridge St., Auburn, MA • 508-832-6300

www.arcadesnacks.com

Hours: Mon.-Fri. 8:30am-5:00pm; Sat. 9am-2pm




BREWS*continued from page 5***Gardner Ale House Moon Hill Brewing Company**74 Parker St., Gardner
978-669-0122

gardnerale.com

It's a full-service restaurant, so eat up. While you're there, enjoy a Thunder Buddy or Facelift IPA.

GlenPharmer Distillery860 W Central St., Franklin
508-528-4000

glenpharmer.com/

The GlenPharmer Distillery Tasting Room & Restaurant is the perfect setting for guests to explore and enjoy locally sourced meals, hand-crafted spirits, and creative cocktails.

Greater Good Imperial Brew Co.55 Millbrook St., Worcester
508-926-8736

greatergoodimperials.com

Est. 2015, America's all imperial brewing company. Try the Evana Russian Imperial Stout, or the Greylock 12-percent

New England IPA. Hungry? There are hot dogs, grilled cheese sand-wiches and more. Live events, too.

Hardwick Vineyard & Winery3305 Greenwich Rd., Hardwick
413-967-7763

hardwickwinery.com

Indulge in a wine tasting, wine flights, wine slushies, etc., while enjoying the cozy indoor and picturesque outdoor spaces.

Iemallo Wine Cellars4 Candle Light Wy., Ashland
508-656-7333

iemallowine.com

We produce small-batch artisan wines made with premium grapes sourced from coastal New England, New York, and the finest regions in the west of the United States.

Jack's Abby Craft Lagers100 Clinton St., Framingham
774-777-5085

jacksabby.com

To create authentic German-style flavors, Jack's Abby brews with traditional ingredients and techniques. The Jack's Abby brewing team travels to Germany every year to procure

German hops and malt from small family-run operations in Bavaria. The brewers use old-world brewing techniques of decoction and spunding to recreate historical lagers.

KrafTea Kombucha3 Brussels St., Worcester
krafteakombucha.com

KrafTea Kombucha begins with their own unique blend of sweet-ened organic tea. After a few weeks of fermentation with a kombucha culture, the sweet tea is completely transformed into a

tart, lightly carbonated, low-alcohol drink. All natural, gluten-free.

La Cantina Winery230 Cottage St., Franklin
978-450-1111

lacantinawinery.com

While our doors opened in 2015, our family's tradition of winemaking started in the 1900s, in Santa Maria Del Molise, Italy. After moving to Franklin, that tradition continued and flourished into La Cantina Winery.

Lookout Farm Brewing & Cider Co. Taproom89 Pleasant St., So. Natick
508-745-3697

lookoutfarm.com

Lost Shoe Brewing and Roasting Company19 Weed St., Marlborough
lostshoebrews.com

An independent craft brewery and coffee roastery with an on-site taproom, less than a mile from Assabet River Rail Trail.

Lost Towns Brewing44 E. Main St., Ware
413-277-0818

lbtbrew.com

Taproom, can sales. Also offering Farmer Matt's delicious farm fresh menu.

Medusa Brewing Company111 Main St., Hudson
978-310-1933

medusabrewing.com

Crafts ales and lagers, and features a 50-foot bar and Beer Hall.

Murder Hill LLC670 Linwood Ave., Whitinsville
774-477-4160

murderhill.com

A new taproom-brewery, they have created a selection of brews using top-quality, locally-sourced ingredients.

Nashoba Valley Spirits100 Wattaquodock Hill Rd., Bolton
978-779-5521

nashobaspirits.com

Offers a wonderful selection of

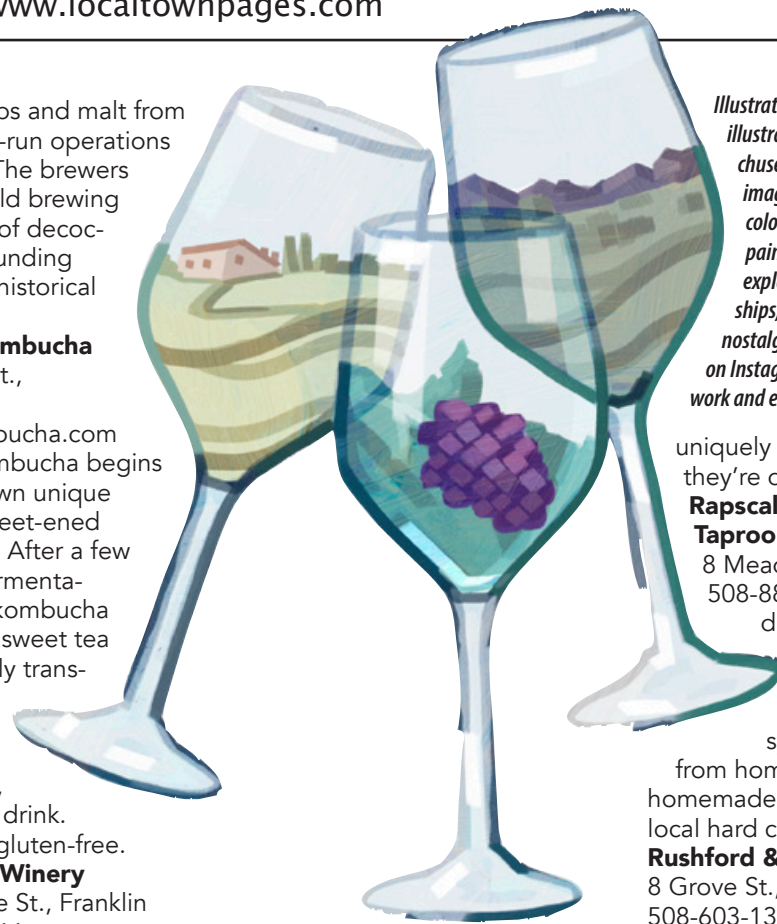


Illustration by Emma Levine – an illustrator based in Massachusetts. She loves to make images that capture vivid colors, playful shapes, and painted textures. Her work explores themes of relationships, growth, beauty, and nostalgia. See more of her work on Instagram @emmalevineartwork and emmalevineartwork.com

uniquely their own. Plus, they're dog-friendly.
Rapscallion Brewery & Taproom
8 Meadow Rd., Spencer
508-885-9972

drinkrapscallion.com

Intimate taproom with views of 20BBL brewing system. Bring food

from home or enjoy our homemade snacks. Craft beers, local hard cider, and wines.

Rushford & Sons Brewhouse

8 Grove St., Upton

508-603-1380

747 Washington St., Holliston,

774-806-8741

rasbrewhouse.com

A nanobrewery and taproom specializing in small batches of traditional beers. They also have hard seltzers made in-house.

Saltbox Kitchen Brewery

84 Commonwealth Ave.,

Concord

978-610-6020

info@saltboxfarmconcord.com

Seven Saws Brewing Company112 Industrial Dr., Holden
sevensawsbrewing.com

Offering a rotating selection of craft beer, local wine, and hard cider (cans available for takeout). The name comes from the historic mills and villages that make up the town. Second location at Soccer Asylum, 603 Pleasant St., Paxton.

Shed Craft Bar & Kitchen342 E Central St., Franklin
508-321-5427

theshedfranklin.com

Serving a great meal with a wide selection of craft beer and creative cocktails or liquors, using the freshest possible ingredients and to source locally whenever possible.

Spicy Water Distillery108 Elm St., Millbury
spicywaterdistillery.com

Spicy Water Distillery is a 4,400 sq foot, full production distillery, tasting room and event space, complete with a flavorful cocktail program highlighting our current spirits.

Start Line Brewing Company151R Hayden Rowe St.,
Hopkinton

508-258-7200

distilled spirits in addition to its wines and beers. Combines award-winning artistry of fermentation with years of experience in distillation, to produce and sell some of the finest brandies, eau de vie, cordials and vodka (distilled from 100% apples) ever produced.

Nashoba Valley Winery100 Wattaquodock Hill Rd.,
Bolton

978-779-5521

nashobawinery.com

50+ acres of orchard and vineyard, also offers function space.

For brews, there's Blackberry Ale, Bolt 117 Lager, Double Rye IPA, and more.

Night Shift Brewing1235 Worcester Rd., Natick
nightshiftbrewing.com**NU Kitchen Worcester**335 Chandler St., Worcester
508-926-8800

Craft beer

Oakholm Brewing Company80 Lake Rd., Brookfield
413-272-9620

oakholmbrewing.com

Locals and visitors alike can enjoy small batch craft beer as fresh as possible and straight from the source. A 10-barrel brewhouse allows them to create a wide variety of offerings.

Owen O'Leary's Brew Pub50 Turnpike Rd., Southborough
17 Connector Rd.,

Westborough

owenolearys.com

Penny Pinchers Brewing Co.75 Elm St., Millbury
508-581-4181

pennypinchersbrewing.com

Not your average brewery.

They use traditional recipes for each of their session-able beers, but there's always a twist added ensuring each brew is

BLISSFUL MEADOWS GOLF CLUB WELCOMES YOU TO

Sunday BREAKFAST

EVERY SUNDAY FROM 9AM to 1PM
LUNCH ALSO SERVED FROM 11AM



UXBRIDGE, MA

Meadowview TAVERN

EST. 1992

MIMOSAS & BLOODY MARYS

BAR OPENS AT 10AM

Indoor & Outdoor Dining • Call 508.278.6110 ext.4

OPEN TO THE PUBLIC

View our Menus

blissfulmeadows.com/meadowview
801 Chockalog Road, Uxbridge

BREWS*continued on page 7*

Here's the scoop!

Ice Cream

Be sure to visit Mass.gov's "Ice Cream Trail" at www.mass.gov/ice-cream-trail for more than 100 destinations featuring the state's hardworking farmers (and cows).

Ben & Jerry's

1265 Worcester St./Rte 9 West, Natick
508-650-5400
benjerry.com

Black Cow

1397 Main St., Millis
508-376-4884
blackcowicecream.com

Bubbling Brook

1652 High St., Westwood
781-762-9860
bubblingbrook.net

Chevy's Ice Cream

191 Pulaski Blvd., Bellingham
508-883-0000

Coco's Tropical Ice

1 Swanson Rd., Auburn
508-407-8787

cocostropicalice.com
Handcrafted Italian ice and gelato in small batches, most dairy- and gluten-free.

Cold Stone Creamery

70 Worcester-Providence Tpke., Millbury (The Shoppes at Blackstone Valley)

508-865-8165

coldstonecreamery.com

Ice cream, frozen yogurt and sorbet, all served to your specifications.

Cool Licks Ice Cream & Frozen Yogurt

325 Pleasant St., Worcester
774-243-7043

coollicksicecream.shop

More than 50 flavors, cash only.

Crescent Ridge Dairy Bar

407 Bay Rd., Sharon

crescentridge.com

Premium ice cream made from milk produced by cows onsite.

Crystal Caves/Robbie's Place

At Crystal Caves Family Fun

Center

790 Southbridge St., Auburn
508-832-0797

crystalcaves.com/partners
95% of ice cream made on-site, waffle cones too. Come for ice cream, stay for batting cages or mini-golf.

Dairy Queen

130 Pond St., Ashland

508-881-2050

21 N. Main St., Bellingham

508-966-0461

18 Sack Blvd., Leominster

978-798-1053

190 West St., Milford

508-473-4654

323 N. Main St., Natick

508-655-3839

291 Main St., Spencer

508-885-2748

18 Summer St., Westborough

508-366-5900

328 West Boylston St., West

Boylston

508-853-2700

721 Grafton St., Worcester

508-459-0799

dairyqueen.com

Eastleigh Farm

1062 Edmonds Rd., Framingham

eastleighfarm.wixsite.com

Locally made in small batches with high-quality ingredients. Sat. and Sun. only.

Elmhurst Dairy Farms

342 W. Main St., Millbury

Established in 1934, the ice cream is homemade.

Flavors of Cook Farm

129 S. Maple St., Hadley

flavors.com

Friendly's

697 Southbridge St., Auburn

508-832-3102

18 Pearson Blvd., Gardner

978-630-1821

482 N. Main St., Leominster

978-537-9787

friendlyrestaurants.com

Froze Zone

184 W. Boylston St., West

Boylston

150 Green St. (Worcester Public Market, Fri-Sun)
774-261-4411

froze-zone.com

Now offering Italian Ice and gelato.

Gibby's Famous Ice Cream

42 Sunderland Rd., Worcester
508-753-1095

60+ flavors of homemade ice cream

Goodhile's

1122 Wachusett St., Holden

508-829-9429

Ice cream, frozen yogurt, sandwiches. Outside seating at tables with umbrellas.

Hanson's Farm

20 Nixon Rd., Framingham

508-877-3058

hansonsfarmframingham.com

Sat. and Sun. only.

Ice Cream Beach Club

ICE CREAM

continued on page 8

BREWS

continued from page 6

startlinebrewing.com

Pouring craft beer, offering beer-to-go, carry out food, and more.

Sterling Street Brewery

175 Sterling St., Clinton
65 Jackson Rd., Devens
sterlingstreetbrewery.com
Brewery & taproom, food trucks and events.

Stone Cow Brewery

500 West St., Barre
978-257-8600

stonecowbrewery.com

Located at the 1,000-acre Carter & Stevens Farm, a passion project born of a love for craft beer, the brewery is an effort to sustain the farm for many generations to come. Full restaurant. Dog friendly. They

also have raw milk.

Tackle Box Brewing Company

416 Boston Post Rd. E,

Marlborough

508-321-3292

tackleboxbrewing.com

Offering craft beer, hard seltzer, some pub food, live entertainment, and more.

Thirsty Robot Brewing Company

265 Summer St. (back of building), Fitchburg

thirstyrobotbrewing.com

Family-owned and operated micro-brewery focused on masterfully crafted, small batch, flavor driven beers.

Timberyard Brewing Company

555 East Main St.,

East Brookfield

774-745-8192

timberyardbrewing.com

Stop by and have a pint of

Practice What You Peach, or grab a four-pack of Rosie Porter to go. Trivia on Wednesday's and live music on weekends.

Tree House Brewing Company

129 Sturbridge Rd., Charlton,
413-523-2367

98 Town Neck Rd., Sandwich,

info@treehousebrew.com

treehousebrew.com

Lagers and crispy beers; IPAs, stouts and cocktails. For international guests: only passports can be accepted.

True West Solar-Powered Brewery

525 Massachusetts Ave., Acton
978-206-1600

brewtruewest.com

A family-owned and village-supported farm-to-table restaurant and brewery. Beer flows a mere 30 feet from the 10 barrel craft brewery to your pint.

Vandervalk Farm & Winery

25 Lovell St., Mendon

508-478-9463

www.vandervalkfarm.com/

Family-friendly, dog-friendly, onsite snacks, food trucks on weekends.

Wachusett Brewing Company

175 State Rd. East, Westminster

152 Green St., Worcester

978-874-9965

wachusettbrewingcompany.com

Great food and fresh, hand-crafted beer. Their unique bar features 24 Wachusett beers on draught along with their country hard seltzers, scratch margaritas, and a selection

of non-alcoholic beverages.

Second location: Wachusett Brew Yard inside the Worcester Public Market.

Wormtown Brewery

72 Shrewsbury St., Worcester
774-239-1555

wormtownbrewery.com

Born in 2010 from an ice cream shop in Worcester, this brewery has flourished into a community-driven business with two taprooms, the esteemed title of the Official Hometown Brewery of the Worcester Red Sox, and hundreds of Wormtown beverages distributed across five states.





SHREWSBURY
Marble & Granite, Inc

Biggest selection of marble, granite and quartz.

ALL MARBLE & GRANITE SLABS ON SITE
350 Colors In Stock!!

620 Boston Turnpike (Rt. 9), Shrewsbury
1/4 Miles East of Home Depot. (BIG BLUE BUILDING)

508-842-9800



Mon.-Thurs. 8-5
Fri. & Sat. 9-4

SUMMER @ The J!






Day Camp
Sports Camp
Preschool
Fitness Classes
Swim Lessons
Pool Parties
Pickleball
And More!




3-MONTH MEMBERSHIPS - JOIN TODAY!



worcesterjcc.org • 508.756.7109

ICE CREAM

continued from page 7

10 Mechanic St., Foxboro
icecreambeachclub.com/contact

Ice Cream Lady

63 Main St., Douglas
508-476-2631

Sundaes, Shakes, 24 flavor soft serve, Hard Ice Cream, Razzles, Floats, and more. Statue featured on roadsideamerica.com

iCraze Frozen Yogurt

50 Boston Turnpike, Shrewsbury
508-425-3950

www.facebook.com/ICrazeFrozenYogurt

Self-serve frozen yogurt with rotating flavors to mix and match.

JJ's Ice Cream

167 Milford St., Upton
508-529-6006

Old-school ice cream stand serving ice cream and frozen yogurt.

Kimball Farm

343 Bedford Rd., Carlisle

978-369-1910
1543 Lunenburg Rd., Lancaster
978-534-9800

400 Littleton Rd., Westford
(This location also has 50 acres of fun activities)

978-486-3891
kimballfarm.com
50+ flavors of homemade ice cream

Kravings Pizza & Ice Cream

979 Main St., Millis
508-376-6069

kravingsmillisma.com

Lilac Hedge Farm

216 Wachusett St., Rutland
774-245-5367

lilahedgefarm.com

Mad Willie's Ice Cream & Frozen Yogurt

963 Worcester Rd., Framingham

508-370-3833

madwillies.com

Open every day, weather permitting.

Madulka's Ice Cream

193 Lake Ave., Worcester
508-459-2323

madulkasicecream.com

On Lake Quinsigamond's shores, drive, boat, walk or

float on in! Serving premium yogurt and hard ice cream, soft serve, sundaes, and more.

Meola's Wayside Ice Cream

110 Leominster Rd., Sterling
978-422-3900

165 West Boylston St., West Boylston

508-835-9747

A local landmark for quality ice cream since 1912.

Murphy's Eats & Treats

911 Edell Rd., Framingham
508-434-7744

New City Microcreamery

28 Main St., Hudson
978-333-7144

Small batch gourmet ice cream

Park Street Ice Cream Shoppe

14 Park St., Natick
508-655-8113

parkstreeticecream.com

Pirate's Cove

74 Providence Rd., Northbridge/Linwood
508-234-0700

piratescovema.com

Robbie's Place

At Crystal Caves Family Fun Center

790 Southbridge St., Auburn
508-832-0797

crystalcaves.com/partners

95% of ice cream made on-site, waffle cones too. Come for ice cream, stay for batting cages or mini-golf.

Ronnie's Seafood

208 City Depot Rd., Charlton
508-248-5024

ronniesseafood.com

Rosewood Restaurant

445 Hartford Ave., Bellingham
508-966-1126

rosewoodbellingham.com

Ice cream and seasonal seafood.

Rota Spring Farm

117 Chace Hill Rd., Sterling
978-365-9710

rotaspringfarm.com

"A herd of flavor in every scoop!"

Sterling Ice Cream

167 Clinton Rd., Sterling
978-422-7742

sterling-corporation.edan.io

Still Four Corners

224 Barre-Paxton Rd., Rutland
508-886-6666

stillfourcorners.com



Illustration by Anna Gomes, an illustrator and aspiring tattoo artist born and raised in Boston, MA. Her work focuses on moments of love, nostalgia, and the otherworldly and has been self published throughout social media and various art fairs, centering around ink illustration, painting, and book arts. You can find her full portfolio on annacarolina-studio.carrd.co

Sub Zero Nitrogen Ice Cream

44 Front St., Worcester
774-418-5546

91 Main St., Ashland
508-202-9790

subzeroicecream.com

Uses liquid nitrogen to instantly make ice cream.

Swirls & Scoops

68 Worcester St., No. Grafton
508-839-9036

Ice cream parlor and frozen yogurt.

Tangerini's Farm

139 Spring St., Millis
508-376-5024

tangerinisfarm.com

Ice cream from Maple Valley Creamery in Hadley

The Clam Box

53 South Maple St., Brookfield
508-637-1790

brookfieldclambox.com

The North Pole Ice Cream & Treats

800 Pulaski Blvd., Bellingham

Instagram @thenorthpoleicecream

The Spoonery

1 Lumber St., Hopkinton

508-625-2216

Tutti Frutti Frozen Yogurt

385 Southbridge St., Auburn
Mall

508-832-2272

Self-serve frozen yogurt.

Uncommon Cow

1 Grafton Common, Grafton
508-330-0618

West End Creamery & Adventure Farm

481 Purgatory Rd., Whitinsville
508-234-2022

westendcreamery.com

60 flavors of hand-dipped ice cream, frozen yogurts, sherbets and more. Adventure Farm has 25+ farm-themed games and activities.

Whittier Farms

90 Douglas Rd., Sutton
508-865-1053

whittiers.com

Yoway Cafe & Frozen Yogurt

395-B Park Ave., Worcester
508-926-8226

www.facebook.com/yoway.worcester

I scream, you scream, we all scream for an Ice Cream Field Trip! And if you reallllllllllly love ice cream, consider turning the Commonwealth's Ice Cream Trail database into a summer checklist. You can find the full list at <https://bit.ly/MassIceCreamTrail>.

New wild adventures for everyone at Southwick's Zoo

A New England summer-time institution, now in its 61st year, Southwick's Zoo in Mendon is growing and expanding, offering new wild adventures for first-time and returning guests. "Southwick's Zoo continues to evolve, balancing conservation, education, and family entertainment," said Betsey Brewer, Southwick's Executive Vice President. "From new experiences to important animal milestones, the zoo is creating meaningful opportunities for guests to learn about and appreciate wildlife."

The largest zoo in New England, Southwick's offers guests 200 acres of naturalistic habitats and up-close wildlife moments with some of its over 900 animals from around the world.

"We are planning a lot of events and activities this season," said Nick Keyes, Marketing Director. "Some will be animal centered like our Mad about Monkeys Day, while others mark an occasion like Christmas in July or a cultural exploration like Sounds of Africa." He added, "All details for

the events and our special reduced entry fee days—Father's Day, July 4th and the New England state days—can be found at SouthwicksZoo.com."

Besides additional events, the zoo will also feature a new entertainment crew. "The Mane Attraction, our new team of entertainers, and our Lion Mascot, will be walking through the park offering impromptu storytimes, dance parties and activities," said Nick. "While the group will focus on children, adults will enjoy the entertainment too."

A few new additions to the zoo will be celebrating their first birthdays, including three cheetah cubs born to Nya, on May 5, 2025. The cubs are part of the Zoo Association of America's (ZAA) Animal Management Program. They are an incredible milestone for Southwick's and the vulnerable species' future since only 5 percent of cheetah cubs live to adulthood in the wild.

"The dedication shown by the Southwick's Zoo animal care team during those critical first

GOLD Sponsor
spotlight



weeks gave the cubs an amazing start, and their progress is truly worth celebrating," said Betsey, who is also ZAA Board Chair. "It is wonderful to see the cubs thriving."

Visitors will have more opportunities to watch the energetic cubs explore, play, and grow throughout the summer season. As part of continued improvements and expansion projects throughout the zoo, Southwick's is also enhancing several animal habitats and guest experiences ahead of the busy summer and fall seasons.

Another new experience



Come meet Piper and all of the other animals at Southwick's Zoo this summer. The zoo is open for daytime access now through October 31, 10 AM - 5 PM.

will be the Avian Adventures: Above and Beyond. "Using new free-flight training techniques, an Eagle Owl and other birds will soar from trainer to trainer and above the audience without overhead netting," said Nick. "It is a totally different, immersive experience highlighting the birds' natural behaviors."

"We wanted this season to feel more interactive and exciting. Whether guests are visiting

for the animals, the entertainment, or one of our special events, there is always something new happening around the park," said Cindy Brewer Lavoie, Southwick's President.

Southwick's Zoo is open seven days a week now through October 31 from 10 am to 5 pm including all holidays. For information visit SouthwicksZoo.com or call 1-800-258-9182.

PAID ADVERTISEMENT

Day Trips

Massachusetts

Cape Cod Winery & Brewery Trail

- Scenic 6A ride
- Truro Vineyards
- Area breweries

Martha's Vineyard

- Ferry ride
- Bike rental and beach
- Seafood and sunset cocktails

Old Sturbridge Village, Sturbridge

- Historic village
- Hands-on crafts and animal encounters

Bakery and picnic area

Plymouth Plantation & Plymouth

- Tour historic plantation
- Tour Mayflower II
- Dine on waterfront

Provincetown

- Art galleries
- Whale watches and dune tours

Food and nightlife

Six Flags New England, Agawam

- Water park and roller coasters

Connecticut

Lake Compounce, Bristol

- Oldest amusement park in the USA
- Classic rollercoasters
- Conn.'s largest water park

Mystic area

- Mystic Aquarium
- Mystic Seaport Museum
- Famous pizza from Mystic
- Pizza
- Downtown drawbridge

Maine

City of Portland

- Great for foodies
- Craft breweries, gourmet coffees
- Harbor cruises

York's Wild Kingdom & Ogunquit

- Zoo and amusement rides
- Ogunquit Beach
- Ogunquit for lobster roll and fried clams

New Hampshire

Story Land & No. Conway

- Story Land, Glen, NH
- Scenic drive
- Diana's Baths, Bartlett, NH

Canobie Lake Park, Salem

- Roller coasters, water rides, games, music, etc.

Rhode Island

Block Island

- Ferry
- Bike rentals
- Beaches and bluffs
- Waterfront dining

Newport

- Tour of The Breakers mansion
- Cliff Walk ocean views
- Easton's Beach carousel and boardwalk snacks



CABINET DEPOT®

marcott.cabinetdepot@gmail.com

Fore!

Local golf courses

*Rates available at press time and subject to change. Weekday and weekend rates often vary; these are primarily weekday rates.

Bedrock Golf Club
87 Barre Paxton Rd., Rutland
508-886-0202,
bedrockgolfclub.com
9 holes, 3,463 yards, 36 par.
Rates: \$23/37(without/with cart)

Berlin Country Club
25 Carr Rd., Berlin
978-838-2733
berlincountryclub.com
9 holes, 2,233 yards, 33 par.
Rates: \$24/39

Blackstone National Golf Club
227 Putnam Hill Rd., Sutton
508-865-2111, bngc.net
18 holes, 6,909 yards, 72 par.
Rates vary

Blissful Meadows Golf Club
801 Chockalog Rd., Uxbridge
508-278-6110,
blissfulmeadows.com
18 holes, 6,700 yards, 72 par.
Rates: \$35/55

Butternut Farm Golf Club
115 Wheeler Rd., Stow
978-897-3400,
butternutfarm.com
18 holes, 6,302 yards, 70 par.
Rates: \$57/81

Connecticut National Golf Club
136 Chase Rd., Putnam, Conn.
860-928-7748, ctnationalgolf.com
18 holes, 6,935 yards, 71 par.
Rates: \$62/80

Cyprian Keyes Golf Club
284 East Temple St., Boylston
508-869-9900, cypriankeyes.com
18 holes, 6,871 yards, 72 par.
Rates vary
9 holes (par 3), 1,230 yards.
Rate: \$29

Dudley Hill Golf Club
80 Airport Rd.,
Nichols College, Dudley
508-916-2822,
dudleyhillgolf.com
9 holes, 3,233 yards,
36 par. Rates: \$31/41

Ellinwood Country Club
1928 Pleasant St., Athol
978-249-7460,
ellinwoodgolf.com
18 holes, 6,153 yards, 71 par.
Rates: \$30/55

Gardner Municipal Golf Course
152 Eaton St., Gardner
978-632-9703,
gardnergolfcourse.com
18 holes, 5,857 yards, 71 par.
Rates: \$40/57

Grandview Country Club
449 Wachusett St., Leominster
978-537-9151,
grandviewgolfleominster.com
9 holes, 3,357 yards, 36 par.
Rates: \$20/32

Green Hill Municipal Golf Course
1929 Skyline Drive, Worcester
508-799-1359, greenhillgc.com

18 holes, 6,392 yards, 72 par.
Rates: \$43/68

Harrisville Golf Course
125 Harrisville Rd.,
Woodstock, Conn.
860-928-6098,
harrisvillegolfcourse.com
9 holes, 2,915 yards, 36 par.
Rates: \$24/35

Hemlock Ridge Golf Course
220 Holland Rd., Fiskdale
508-347-9935, hemlock-
ridgегolfcourse.com
9 holes, 3,136 yards, 36 par.
Rates: \$20/40

Heritage Country Club
85 Sampson Rd., Charlton
508-248-5111,
heritagecountryclub.com
18 holes, 6,710 yards, 71 par.
\$55/75

Highfields Golf & Country Club
42 Magill Drive, Grafton
508-839-1945,
highfieldsgolfcc.com
18 holes, 7,021 yards, 72 par.
Rates vary

Hillcrest Country Club
325 Pleasant St., Leicester
508-892-0963, Facebook @
HillcrestCountryClubLeicester
9 holes, 2,920 yards, 35
par. Rates: \$18/34

Holden Hills Country Club
1800 Main
St., Holden



Illustration by Parker Cook, an artist based in Boston, MA. I work in a wide range of arts including; illustration, video filming/editing, animating, painting, writing, and 3D arts. I specialize in comics, visual storytelling and character creation. I love to use bright colors and a sprinkle of humor to let my drawings come to life! Visit peaxyhillustrations.com and don't be afraid to reach out!"

508-829-3129,
holdenhillsгolf.com
18 holes, 6,088 yards, 71 par.
Rates: \$50/63

Hopedale Country Club
90 Mill St., Hopedale
508-473-9876, hopedalecc.com
9 holes, 2,954 yards, 37 par.
Rates: \$38/49

Indian Meadows Golf Club
275 Turnpike Rd., Westboro
508-836-5460,
indianmeadowsgolfclub.com
9 holes, 3,265 yards, 36 par.
Rates: \$23/33

Juniper Hill Golf Course
202 Brigham St., Northboro
508-393-2444,
juniperhillgc.com
Riverside course: 18 holes,
6,245 yards, 71 par. Rates:
\$54/106(2 riders)

Lakeside course: 18 holes,
6,282 yards, 71 par. Rates:
\$54/106 (2 riders)

Kettle Brook Golf Club
136 Marshall St., Paxton
508-799-4653,
kettlebrookgolfclub.com
18 holes, 6,912 yards, 72
par. Rates: \$80/80

Longhi's Golf
300 Feeding Hills Rd.,
Southwick
413-569-0093, longhi-
golf.com

Par 3-4 course, driving range.
Rates vary

Maynard Golf Course
50 Brown St., Maynard
978-637-2268, maynardgolf.com
9 holes, 3,013 yards, 35 par.
Rates: \$22/34

Monoosnock Country Club
40 Monoosnock Ave.,
Leominster
978-537-1872,
monoosnockcountryclub.com
9 holes, 3,051 yards, 35 par.
Rates vary

Northern Spy Golf Club
40 Scales Lane, Townsend
978-597-8400,
northernspygolf.com
18 holes, 6,231 yards, 70 par.
Rates vary

Pakachoag Golf Course
15 Upland St., Auburn
508-755-3291,
pakachoaggolfcourse.com
9 holes, 3,255 yards, 36 par.
Rates: \$22/35 per person

Pine Ridge Country Club
28 Pleasant St., North Oxford
508-892-9188, pineridgegolf.net
18 holes, 6,041 yards, 71 par.
Rates: \$33/55

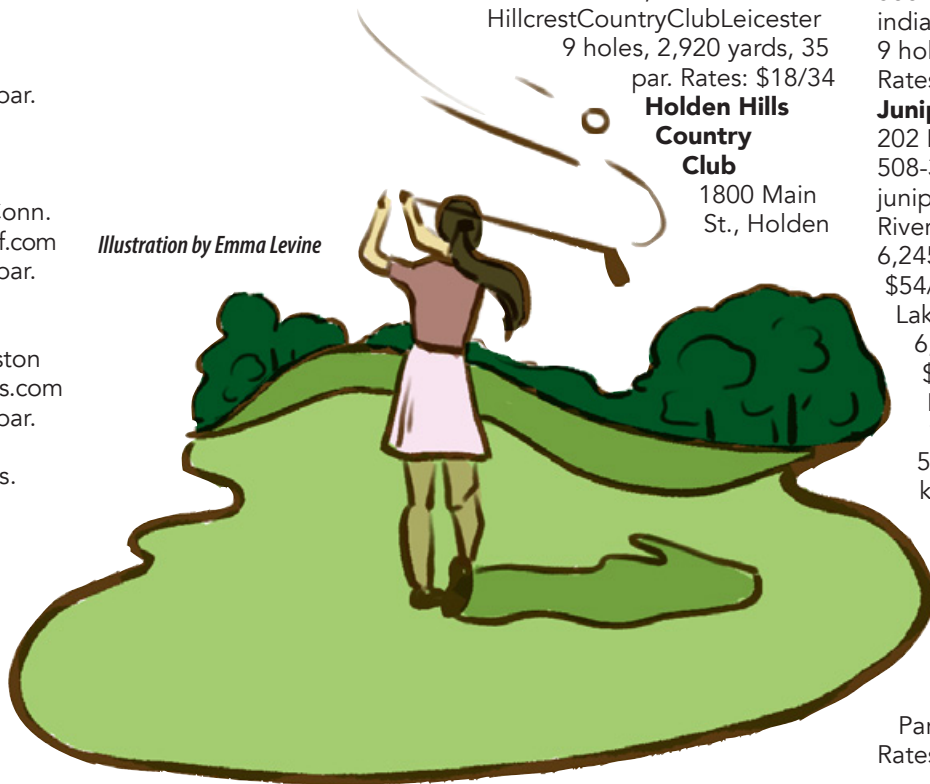
Pinecrest Golf Club
212 Prentice St., Holliston
774-233-0579,
pinecrestgolfclub.org
18 holes, 4,906 yards, 66 par.
Rates: \$41/63

GOLF

continued on page 13



Illustration by Emma Levine



John Henry Tavern Open



42 Magill Dr., Grafton
(508) 839-1945
www.highfieldsgolfcc.com

Pro Shop is open 7am -6pm Monday – Sunday

- 18 Hole Championship Golf Course
- Summer Jr. Golf Camps
- Fully Stocked Pro Shop

Check us out on

- Outdoor dining on Patio overlooking 18th Green
- Wedding & event seating up to 200

Farmers Markets

SECTION SPONSOR



THE DANIELS FARMSTEAD FOUNDATION, INC.

The Daniels Farmstead Farmers Market
 286 Mendon St, Blackstone
 info@danielsfarmstead.org
 www.danielsfarmstead.org

Open Sundays, July through October, 11 AM to 3 PM, the Daniels Farmstead Farmers Market brings together organic locally grown produce, homemade baked goods, backyard picnic favorites, and handcrafted goods from local vendors and artisans. Visitors can also enjoy historic house tours and seasonal events throughout the year while supporting local farms, makers, and small businesses.



Illustration by Toma Sargsyan, an Armenian illustrator who works in both traditional and digital mediums. Her main focus is culturally driven art created through silk paintings. See more of her work on Instagram: tomart_illustrated or at tomasargsyan.com

Ashland Farmers Market

125 Front St.
 June - Oct.; Saturdays,
 9 a.m. - 1 p.m.
 ashlandfarmersmarket.org/

Auburn Farmers & Cultural Market

369 Southbridge St.,
 library parking lot
 774-415-0698

TBS

Barre Farmers Market

78 Common St.,
 Barre Common

barrefarmersmarketma.com

May - Oct.; Saturdays,
 9 a.m. - 12:30 p.m.

Beaver Brook Park (starts June 20, closed on 7/4)

306 Chandler St., Worcester
 (across from Foley Stadium)
 June 12 - Oct. 31, Fridays,
 9 a.m. - 12 p.m.

Boylston Farmers Market

Town Common, 10 Church St.
 508-869-6539
 July - Oct.; Saturdays,
 10 a.m. - 1 p.m.

Charlton Grange Farmers Market

Town Common

May 28 - Aug. 27;
 Wednesdays, 4 - 7 p.m.
 (no market July 1)

Charlton Mass. Pike Eastbound

June to Oct.
 Saturdays and Sundays,
 9 a.m. - 4 p.m.

Daniels Farmstead at Southwick Hill

286 Mendon St., Blackstone
 508-726-2042

danielsfarmstead.org
 July 3 - Oct. 2; Sundays,
 11 a.m. - 3 p.m.

SNAP-EBT, HIP, Senior FMNP,
 WIC, select vendors only
East Brookfield/Timberyard Brewing

555 East Main St.
 timberyardbrewing.com/farmers-market

June - Sept: Sat., 12 - 4 p.m.

Fitchburg Farmers Market

185 Elm St., Fitchburg Art

Museum
 1st Thursday, 3 p.m. - 5:30 p.m.
 SNAP/EBT, WIC FMNP, Senior FMNP, HIP accepted

Fitchburg/Wallace Civic Center

Wallace Civic Center Park-
 ing Lot, John Fitch Highway,

MARKETS

continued on page 12



 **THE DANIELS FARMSTEAD FOUNDATION, INC.**

WEEKLY FARMERS MARKET

JULY - OCTOBER | SUNDAYS 11 AM - 3 PM



Shop and Support

- Organic Locally Grown Produce
- Local Handicraft Vendors
- Homemade Baked Goods
- Backyard Picnic Classics



Explore

Guided tours of the 1750 Daniels Farmhouse and historic property

286 Mendon Street, Blackstone

2026 EVENTS & FESTIVALS
SUNDAYS | 11 AM - 3 PM

FREEDOM FESTIVAL
 Let Freedom Ring!
 July 5

SUMMER BBQ
 at the Farm
 July 12

Pollinator Festival
 July 26

POLISH PICNIC
 August 16

FOOD TRUCK FEST
 September 6

Kids Fest
 TRACTOR, TRUCK & CAR SHOW
 September 27

CIDER FESTIVAL
 October 4

Learn More:
 DanielsFarmstead.org



MARKETS

continued from page 11

Fitchburg
July-Oct.; Fri., 8:45 a.m. - 12 p.m.
SNAP/EBT, WIC accepted

Framingham Farmers Market
Edgell Rd. & Vernon St.
June - Oct.; Thursdays,
12 - 5:30 p.m.
framinghamfarmersmarket.org

Framingham St. Tarcisus Farmers Market
562 Waverly St.
Hours TBD (see nfmd.org)

Franklin Farmers Market
200 Main St.
May 22 - Oct. TBD; Fridays,
2 - 6 p.m.

Gardner Farmers Market
62 Waterford St.
May - Nov.; 3rd Saturday, 9:30
a.m. - 1 p.m. (5/16, 6/20,
7/18, 8/15, 9/19, 10/17,
11/21)

Senior FMNP, WIC FMNP
accepted
gardnerfarmersmarket.com

Grafton Farmers Market
Town Common
graftonfarmersmarket.com
June - Oct.; Wednesdays,
2 - 6 p.m.

Hardwick Farmers Market
Town Green
June - Oct.; Sundays,
11 a.m. - 2 p.m.

Holden Farmers Market
1174 Main St.
holdenma.gov/agricultural-
commission
May - Oct.; Tues., 3 - 6:30 p.m.
SNAP/EBT, WIC FMNP, Senior
FMNP select vendors

Holliston Farmers Market
24 Water St.
June 16 - Oct. 13; Tuesdays,
4 - 8 p.m.

Hopkinton Farmers Market
Town Common, Main & Ash Sts.
hopkintonfarmersmarket.com/
June - Oct.; Sundays, 1 - 5 p.m.
WIC, SFMNP, SNAP

Leicester Farmers Market
1230 Main St. (Rte. 9 west),
Castle Cantina parking lot

June - Oct.; Sat., 9 a.m. - 2 p.m.
WIC FMNP, WIC, Senior FMNP
accepted

Leicester/Maple Hill
132 Marshall St., Maple Hill
Farm
June 7 - Sept. 20; Sundays,
10 a.m. - 2 p.m.

Millis Farmers Market
142 Exchange St.
July - Oct.; Tues., 2 - 6 p.m.
www.millisucc.org

Town Common,
550 Washington St.
June 16 - Oct. 20; Tuesdays,
2 - 6 p.m.

Oxford Farmers Market
Town Common, 350 Main St.
July - Sept.; Saturdays,
9 a.m. - 1 p.m.



Illustration By Ciara Smith

Leominster Farmers Market
Monument Park
June - Sept.; 1st Saturday,
11 a.m. - 2 p.m.
ncmfarmersmarkets.com/
leominster-farmers-market

Medway Farmers Market
Choate Park, 2R Oak St.
June - Oct.; Thursdays, 4 - 7 p.m.

Natick Farmers Market
Natick Common, Rte. 27
May 23 - Oct. TBD; Saturdays,
9 a.m. - 1 p.m.
natickfarmersmarket.org

Norfolk Farmers Market
Town Hill, 2 Liberty Ln.
June 3 - Sept. 30; Wed., 3 - 7 p.m.

Norwood Farmers Market

Paxton Garden Club
17 West St. (behind Council on
Aging)
Thursdays July 9, Aug. 13,
Sept. 10; 3:30-6:30 p.m.

Petersham Farmers Market
Town Common
(featuring music)
June 19 - Oct. 9; Fri., 4 - 7 p.m.

Shrewsbury Farmers Market
1000 Main St.
June - Sept.; Wed. 2 - 6:30 p.m.
shrewsburyfarmersmarket.com

Sturbridge Farmers Market
Town Common
June 1 - Oct. 12, Sundays,
9 a.m. - 1 p.m.
sturbridgefarmersmarket.com

West Brookfield Farmers Market
Town Common, 31 N. Main St.
June - Oct.; Wed., 3 - 6 p.m.

Worcester Area REC
(Regional Environmental
Council) **Farmers Markets**
Call or check website for dates
and locations. 508-799-9139,
recworchester.org/farmers-markets

Worcester/Beaver Brook Park
306 Chandler St., Beaver Brook
Park parking lot
May 17 - Oct.; Fri., 9 a.m. - 12 p.m.

Worcester/Market on Exchange (fka Market on Brussels)
3 Brussels St., behind former
Rotman's Furniture building
June - Oct.; Sun., 11 a.m. - 2 p.m.
www.marketonbrussels.com/

Worcester/Out to Lunch Farmers Market
455 Main St., Worcester Com-
mon Oval, behind City Hall
June 18 - Aug. 20; Wednesdays,
11 a.m. - 3 p.m.

WIC FMNP, Senior FMNP
Worcester/Seabury Heights
240 Belmont St., Worcester
Days/times TBD, visit nfmd.org

Worcester/UMass Chan Medical School
55 N Lake Ave.
June - Nov.; Tues., 10 a.m. - 2 p.m.

Worcester/University Park
965 Main St.
Saturdays, June 13 - Oct.;
Sat, 9 a.m. - 12 p.m.
WIC FMNP, WIC, Senior FMNP,
SNAP accepted

Mobile Farmers Markets
June 16 - Dec. 17 (closed 9/8,
10/13, 11/3, 11/24, 11/25, 11/26)
Tuesdays:

Elm Park Towers
425 Pleasant St., 9 - 10 a.m.

Murray & Wellington Apts.
50 Murray Ave., 11 a.m. - 12 p.m.

Webster Square Towers
1060 Main St., 1:30 - 2:30 p.m.

Coes Pond Village Apts.
39 First St., 3:30 - 4:30 p.m.
Wednesdays:

Green Hill Towers
27 Mt. Vernon St., 9 - 10 a.m.

Autumn Woods
38 Upland Gardens Dr.
11 a.m. - 12 p.m.

Out to Lunch Farmers Market
Worcester Common Oval,
455 Main St., 11 a.m. - 3 p.m.

Plumley Village
16 Laurel St., 2 - 3 p.m.

REC office
108 Beacon St., 4 - 6 p.m.
Thursdays:
Worcester Senior Center
128 Providence St. 9 - 10 a.m.
Family Health Center of Worcester
26 Queen St., 11 a.m. - 12 p.m.
Lincoln Village, Victoria Center
116 Country Club Blvd. 2 - 3 p.m.
Great Brook Valley
81 Tacoma St., 4 - 5 p.m.

Sources:
www.massfarmersmarkets.org/
markets
www.mass.gov/doc/farmers-
market-contacts
recworchester.org/farmers-markets
nfmd.org/ma/

Source: www.recworchester.org/
farmers-markets
Email: farmersmarket@recworces-
ter.org
Phone: 508-799-9139
For weather cancellations, call
512-348-1754

Blackstone Valley Boat Rentals

GROUP RATES

- Scouts
- Families
- Birthday Parties

STAND UP BOARDS For Rent
Daily, 1/2 day (up to 3 hrs.) or for the weekend.

KAYAK & CANOE Rentals
Daily, weekend, weekly or onsite rates. Includes: Paddle and Life Jacket - A Deposit Required.

FIN & FEATHER SPORTS
Outfitters Since 1969

Route 140 Upton, MA - 508-529-3901

www.finandfeathersports.com

Youth Outdoor Summer Camps

MULTIPLE LOCATIONS
Boating - Fishing - Archery - More...

for Girls & Boys - ages 6-14 yrs.
4 activities per day - Times 9am-2pm
5 Sessions available this Summer!
Starts 7/6/26

Go to WWW.FINANDFEATHERSPORTS.COM

FIN & FEATHER SPORTS OUTDOOR ADVENTURES
Rte. 140 Upton, MA 01568
508-529-3901
info.finfeather@gmail.com

Outdoor Adventures is now in our 16th season!

NOW OFFERING 2 to 4 Day Clinics

Altitude Roofing - your trusted local roofers: Built on craftsmanship and integrity

At Altitude Roofing, we're not just contractors — we're your neighbors. Based in Worcester and proudly serving Worcester County and beyond, we've built our company on quality craftsmanship, transparent pricing, industry expertise, and treating every property with the care and attention it deserves.

Altitude Roofing is a local, family-owned and operated, fully licensed, insured, and bonded roofing company specializing in residential, commercial, and industrial roofing systems. In addition to roofing, we provide siding, gutters, chimney repairs, historic restorations, and other exterior services. From small repairs to full replacements, our team brings hands-on experience, professionalism, and accountability to every project.

What makes Altitude different from other roofing companies? We are roofers — not salespeople chasing commissions.

When our technicians come to your property, they are there to assess the issue and provide honest solutions tailored to your home or business — not push unnecessary sales tactics. We believe customers deserve experienced roofing professionals who understand the work from the roof up

**Business
spotlight**



ALTITUDE ROOFING

and take pride in doing the job right.

Our team installs, repairs, and replaces all roofing systems, including slate, asphalt shingles, standing seam metal, cedar shake, membrane systems, and more. From traditional Worcester three-deckers and historic churches to new commercial construction projects, we bring the experience and craftsmanship to handle projects many contractors simply aren't equipped for.

At Altitude Roofing, we understand your property is one of your biggest investments. That's why we focus on honest assessments, quality workmanship, clear communication, and customized solutions tailored to your property's needs. When you

NEW CONSTRUCTION ROOFING & SIDING

SHINGLE

SLATE

STANDING SEAM METAL

WE REPLACE & REPAIR ALL ROOF SYSTEMS

508.963.7794

Scan for Free Estimate

choose Altitude Roofing, you'll work directly with your project manager throughout the entire process — not a call center or revolving sales team.

Our customers choose us because we care about doing the job the right way — not simply the fastest way. We stand behind our work long after the project is complete by offering both

manufacturer warranties and an Altitude craftsmanship warranty. That reputation has been built one project, one customer, and one community at a time.

Whether you need a repair, full roof replacement, or a free assessment, Altitude Roofing is here to help protect what matters most. Quality Craftsmanship. Built on Trust. To book your free

estimate contact us today! 508-963-7794 or email us altitudeindustriescorp@gmail.com

You can also visit us online to learn more and to see our work: altituderoofingMA.com

Altitude Roofing Quality Craftsmanship. Built on Trust. Worcester, MA | Serving All of New England

PAID ADVERTISEMENT

GOLF COURSES

continued from page 10

Quail Hollow Golf & Country Club

1822 Old Turnpike Rd., Oakham
508-882-5516
18 holes, 5,717 yards, 70 par.
Rates vary

Quail Ridge Country Club

49 Skyline Drive, Acton
978-264-0399,
quailridgegolfclub.com
9 holes, 3,068 yards, 35 par.
Rates: \$29/45
18 holes, 6,179 yards, 70 par.
Rates: \$50/71

Raceway Golf Club

205 E. Thompson Rd., Thompson, Conn.
860-923-9591, racewaygolf.com
18 holes, 6,570 yards, 72 par.
Rates: \$40/60

Sassamon Trace Golf Course

233 South Main St, Natick
508-655-1330,
sassamontrace.com

9 holes, 2,383 yards, 32 par.
Rates: \$28/32 per person

Settlers Crossing Golf Course

994 Northfield Rd., Lunenburg
978-582-6694, settlersgolf.com
9 holes, 2,695 yards, 35 par.
Rates: \$22/46 per person

Shaker Hills Country Club

146 Shaker Rd., Harvard
978-772-3330, shakerhills.com
18 holes, 6,910 yards, 72 par.
Rates vary

Shining Rock Golf Club

91 Clubhouse Lane, Northbridge
508-234-0400, shiningrock.com
18 holes, 6,728 yards, 72 par.
Rates vary

Southborough Golf Club

Under new management
36 Cordaville Rd., Southborough
508-460-0946,
southboroughgolfclub.com
9 holes, 2,653 yards, 35 par.
Rates: \$24/36 per person

Stow Acres Country Club

58 Randall Rd., Stow
978-568-1100, stowacres.com

18 holes: 18 holes, 6,520 yards, 72 par. Rates: \$50/74

Templewood Golf Course

160 Brooks Rd., Templeton
978-939-5031,
templewoodgolfcourse.com
18 holes, 6,086 yards, 70 par.
Rates: \$45/72

Wachusett Country Club

187 Prospect St., West Boylston
508-835-2264, wachusettcc.com
18 holes, 6,567 yards, 72 par.
Rates: \$85/85

Westborough Country Club

121 West Main St., Westborough
508-366-9947,
westborocountryclub.com
9 holes, 2,973 yards, 36 par.
Rates: \$30 walking

Westminster Country Club

51 Ellis Rd., Westminster
978-874-5938, westminster-countryclub.com
18 holes, 6,512 yards, 71 par.
Rates: \$37/61

Woods of Westminster

23 Rock Maple Lane, Westminster

978-874-0500,
thewoodsofwestminster.com
18 holes, 6,060 yards, 72 par.

Rates: \$38/60 per person



New England Steak & Seafood Restaurant

Casual Elegant Dining and Banquets

PRIME RIB AND STEAKS
Prepared over our open pit
FRESH SEAFOOD & LIVE LOBSTERS
CHICKEN & PASTA DISHES
APPETIZERS, SALADS
COMBINATION DINNERS
AND KID'S MEALS

TRY OUR FAMOUS Cinnamon Rolls & Chowder

Mon. 4-9pm; Tues. Closed; Wed. & Thurs. 11:30am-9pm;
Fri. 11:30am-10pm; Sat. 4-10pm; and Sun. 12-9pm
Serving this area with the finest steak and seafood for over 65 years

508-478-0871 • 11 Uxbridge Rd. ~ Rt. 16 Mendon

See Our Menu on our website
www.nesteakandseafood.com or on Facebook



Beaches

The 2026 list was updated with information available at press time.

This is not meant to be an exhaustive list but rather general guidance. Be sure to confirm details before heading out.

Whether you want to just spend an afternoon at the beach on a warm summer afternoon, or a weekend away in a quaint seaside town, New England offers you lots of options. From state parks to amusement parks, there's a beach for everyone.

Notes: Fees at Cape Cod National Seashore beaches are daily vehicle \$25; motorcycles \$20; pedestrians and bicyclists 16 years and older \$15; annual pass \$60. www.nps.gov/caco/

Although we have done our best to supply a complete and accurate listing, some details/prices may have changed. Please check with the individual town and beaches for the most up-to-date information.

Check public beach closings at www.mass.gov before you head out.

For handicap-accessible beaches, consider the list of Accessible Beaches at <https://bit.ly/MAaccessibleBeaches> or www.spedchildmass.com/2022/05/17/cape-cod-accessible-beaches-list/

MASSACHUSETTS

Ashland

- Ashland State Park, 162 W. Union St. Designated areas for swimming.

Barnstable

Note: A Barnstable beach pass or daily fee is required to park at town beaches between the hours of 9am – 3:45pm (7am – 3:45pm at Craigville Beach) year-round. Daily fee parking is only available in season, and only at Craigville Beach, Hathaway's Pond, Kalmus Beach, Sandy Neck Beach, Sandy Neck/Bodfish Park, Sea Street/Keyes Beach, and Veteran's Park Beach. Residents \$55, non-residents \$375.

- Craigville Beach, 997 Craigville Beach Rd. Lifeguard, restrooms, showers, food, wheelchair accessible. Daily parking fee.
- Hathaway's Pond, 1431 Phinney's P Lane. This small natural kettle hole pond is one of the most popular family ponds on Cape Cod. Features a picnic area, a 1.25-mile walking loop, and a roped-off guarded swimming area. It's the only pond in Barnstable with parking open



Illustration by Vio Gao, a recent graduate from Mass Art and an illustrator working in comics, character/creature design, and wildlife illustration. They practice a variety of styles and mediums, and love to incorporate fantastical elements in their art.

to non-residents and daily visitors.

- Kalmus Beach, 670 Ocean St., Hyannis. \$15 Mon-Fri, \$50 a week. \$200 for a seasonal permit. Reduced price resident and handicap parking. Lifeguard, bathrooms, food.
- Sandy Neck Beach/Bodfish Park, 425 Sandy Neck Rd., West Barnstable. Lifeguard, restrooms, food, wheelchair access, and beach wheelchair. Off-road vehicles allowed with permit.
- Sea Street/Keyes Beach, 175 Ocean Ave., Hyannis. Lifeguard, bathrooms, food, handicap parking. No dogs.
- Veterans' Memorial Park Beach, 480 Ocean St., Hyannis. Lifeguard, restroom, food. No dogs.

Bourne

- Gray Gables Beach, Circuit St., Bourne. Medium-sized beach, small swimming area, views of boats, picnic area, playground. Water is calm, suitable for small children.
- Hen Cove, Shore Rd., Bourne. Family-friendly, calm waters, roped-off swimming area, ample space for sandcastle building.
- Monument Beach, Shore Rd., Pocasset. Large beach with lots of room, volleyball space, bathrooms, concessions, life

guards, saltwater is calm. Parking sticker required.

- Sagamore Beach, Off Phillips Rd., Sagamore (part of Bourne). Cape Cod Bay side, lifeguards, porta-potties, family-friendly. Ample space for visitors.
- Scusset Beach State Reservation, 20 Scusset Beach Rd. Lifeguard, restrooms, showers, picnic area, nature center, bicycling. Swimming, fishing, hiking, camping, educational programs. Accessible restrooms, boardwalk, beach mat, beach wheelchairs, trail, fishing. mass.gov/locations/scusset-beach-state-reservation

Boston

- Boston Harbor Islands National & State Park Welcome Center, 191W Atlantic Ave., Boston. Most park islands are open dawn til dusk, year-round. Ferries operate May-Oct. bostonharborislands.org
- Castlet Island, Pleasure Bay, M Street, Carson Beach, 2010 Day Blvd., So. Boston. Lifeguard, restrooms, rinsing showers, boardwalk, beach mat, beach wheelchairs, fishing, biking. mass.gov/locations/castlet-island-pleasure-bay-m-street-beach-and-carson-beach
- Constitution Beach Park, 0 Barnes Av., E. Boston. Entrance via Anthony and Dee Dee Marmo pedestrian overpass,

799 Bennington St. Enjoy one of Boston's hidden waterfront gems while watching planes from Logan Airport fly overhead.

- Savin Hill and Malibu Beach, 68 Denny St., Dorchester. Bathhouse, unguarded swimming, playground, ball fields, free parking.

Brewster

brewster-ma.gov/beach-information

- Breakwater (Upper) Beach, Breakwater Rd. Mild water temperature, calm water, luscious sand, gentle dunes, and tidal flats with fun tidal pools. No lifeguard, portable toilets. Daily parking fee.
- Crosby Landing, 276 Crosby Lane. No lifeguard, long walk at low tide, portable toilet, no dogs.
- Ellis Landing, 200 Ellis Landing Rd. Spectacular sunsets, beachcombing, shallow tide pools, limited parking.
- Linnell Landing, Linnell Landing Rd. No lifeguard, no dogs. Portable toilet, warm saltwater.
- Mant's Landing (fka Robbins Hill), off Robbins Hill Rd. Tidal pools, calm, rocky at low tide. Portable toilet.
- Paine's Creek Beach, Paine's Creek Rd. No lifeguard, no dogs. Portable toilet, warm saltwater. Marshy, jetty-lined beach.
- Point of Rocks Landing, end of Points of Rocks Rd. Public town beach sandwiches between private beaches, rocky, no lifeguards, limited parking, permit required.
- Saint's Landing, Saints' Landing Rd. Small, narrow beach on Brewster flats (which are stocked with shellfish by the state). Clamming permits available for fee.

Chatham

<https://www.chathaminfo.com/beaches> or www.capecod-beaches.net/beaches/chatham/

- Cockle Cove Beach, 435 Cockle Cove Rd., So. Chatham. Lifeguard, portable toilet, no dogs.
- Forest Beach, Forest Beach Rd., So. Chatham. No lifeguard, no restrooms, no dogs. Free parking.
- Hardings Beach, Hardings Beach Rd. Lifeguard, food trucks, restrooms, no dogs.

Every parking spot has easy access to the beach. One mile walk down the beach to Stage Harbor Lighthouse. Residents may purchase stickers at the booths or at 261 George Ryder Rd.

- Jackknife Beach, Bay Rd & Rte 28. No lifeguards, no restrooms, dogs before 9am & after 6pm, calm protected waters.

- Lighthouse Beach, 30 Main St. Close to downtown and lighthouse, limited parking. No lifeguard, no dogs. Portable toilet. Free 30-minute parking.

- North Beach, accessible only by boat or 4WD vehicle with an oversand permit. No lifeguard, no restrooms, no dogs. Cool saltwater, pristine views, active shark area.

- Oyster Pond Beach, 80 Stage Harbor Rd. Lifeguard, restrooms and rinse station, no dogs, free parking (60 spots) but fills up early.

- Pleasant Street Beach, Pleasant St., So. Chatham. No lifeguard, no restrooms, no dogs. Easy access for kayakers, windsurfers, boaters. Free parking (12 spots).

- Ridgevale Beach, 431 Ridgevale Rd. Lifeguard, portable toilets, no dogs. Warm, gentle water with tidal pools and seaweed. Snack shack also rents kayaks, paddle boards, sail boats, beach supplies. Daily parking pass required.

Dartmouth

town.dartmouth.ma.us/265/Public-Parks-Beaches-Division or discoverdartmouth.com

- Apponagansett Beach, 77 Gulf Rd. Lifeguard, volleyball and basketball courts, playground, food. Daily parking pass required.

- Demarest Lloyd State Park, 115 Barney's Joy Rd., No. Dartmouth. An 1800-foot saltwater beach backed by rambling hills of beach grass. Ideal for families with children. See egrets, herons, ospreys, terns, hawks. Daily parking pass required. Beach has cobblestones, might not be able to get to water in a beach wheelchair.

- Jones Park & Beach, 66 St. John St. Lifeguard, bathhouse,

BEACHES

continued from page 14

softball field, horseshoe pits, playground. Daily parking pass required.

Dennis

town.dennis.ma.us/781/Beach-Department

Note: Free use of adaptive equipment in Dennis, including motorized beach wheelchair, mobi floating chair, all-terrain child's wheelchair, accessible golf cart (see website for reservations)

- Chapin Memorial Beach, Chapin Beach Rd, off Route 6A. Lifeguard, portable toilet, no dogs. Known for tidal flats. Fishing, four-wheel vehicles allowed. Daily parking pass required.
- Corporation Beach, 250 Corporation Rd., off Route 6A. Lifeguard, restrooms, snack bar, playground, no dogs. Handicapped-friendly.
- Depot Street Beach, Depot St., Dennis Port, off Route 28. No lifeguard, no restrooms, no parking, no dogs.
- Glendon Road Beach, Glendon Rd., off Route 28. Lifeguard, restrooms, rinse towers, food nearby.
- Haigis Beach, Old Wharf Rd., off Route 28. Lifeguard, portable toilet, no dogs. Narrow and rocky.
- Howes Street Beach, Howes St., off Route 6A. Lifeguard, no restrooms, no dogs. Requires a climb through the dunes. Next to Corporation Beach.
- Inman Road Beach, Inman Rd., Dennis Port, off Route 28. Lifeguard, portable toilet, no dogs. Daily parking pass required.
- Mayflower Beach, Dunes Rd., Dennis. Lifeguard, restrooms, food, no dogs. Clean, white sand, gets crowded, warm saltwater. Daily parking pass required.
- Metcalf Memorial Beach, 67 Chase Ave., Dennis Port. No lifeguard, no restrooms, no dogs. Limited parking in nearby municipal lot.
- Princess Beach, 194 Scargo Hill Rd. Lifeguard, restrooms, no dogs. Swimming, kayaking, paddleboarding on freshwater lake. Accessible only via stairs.
- Raycroft Beach, Raycroft Parkway, No lifeguard, no restrooms, no dogs. Warm water, soft sand, jetty, benches at top of stairs. Parking is very limited.
- Sea Street Beach, Sea Street, Dennis Port, off Route 28. Life-

guard, restrooms, no dogs. Accessible via two tall staircases.

- Sea Street Beach, Sea Street, East Dennis, off Route 6A. Lifeguard, portable toilet, no dogs. Gentle surf, soft white sand, tidal flats. Spectacular views of Sesuit Harbor a short walk away.
- South Village Beach, Baker Way, Dennis Port, off Route 28. Lifeguard, portable toilet, no dogs. Shallow water sandbars where the river meets the ocean.



Illustration by Anna Dinardo

- West Dennis Beach, West Dennis Beach Rd. Lifeguard, restrooms, no dogs. Over a mile long, ample parking, snack bar, playground.

Duxbury

- Duxbury Beach Park, Canal St. to 260 Gurnet Rd. Daily parking pass (cash only).

Eastham

eastham-ma.gov/408/Beach-Sticker-Information
Town of Eastham daily passes and Visitor Beach stickers are not valid at the Cape Cod National Seashore (ocean beaches).

- Campground Beach, 500 Shurtleff Rd. No lifeguard, no dogs. Portable toilet. Faces west for amazing sunset views.
- Coast Guard Beach/National Seashore, 2 Ocean View Dr. Lifeguard, restrooms, satellite parking. No dogs. Cool water and open views of the Atlan-

tic, watch for seals and sharks. Daily parking pass required.

- Cole Road Beach, Cole Rd. Warm saltwater, portable toilet, no lifeguard, no dogs. Small beach, limited parking, sticker must be purchased ahead of time.
- Cooks Brook Beach, Steele Rd. Soft sand, calm warm water, restrooms, no lifeguard, no dogs, 100 parking spots..
- Dyer Prince Area, Dyer Prince Rd. No lifeguard, no restrooms, no dogs. Requires short hike through seagrass-lined paths. Watch boats coming in and out of the harbor.
- First Encounter Beach, 1699 Samoset Rd. Lifeguard, restrooms, no dogs. Alleged first contact between the Pilgrims and Native Americans in 1620. Popular with children for searching in tidal flats, good for kite surfers and windsurfers.
- Great Pond, Great Pond Rd. Lifeguard, portable toilet, no dogs. Great Pond has two public beaches (Great Pond Beach and Wiley Park). Great Pond Beach sits on the east side of the pond and has a roped-off area for swimming. There's also a boat ramp for launching kayaks and sailboats. Parking lines the street but there's no attendant, so be sure to purchase a weekly or seasonal sticker ahead of time. Wiley Park on the opposite end of the pond offers daily parking passes.
- Herring Pond Beach, 460 Herring Brook Rd. Portable toilet, no lifeguard, no dogs. Freshwater pond, shallow waters.
- Nauset Light Beach, 120 Nauset Light Beach Rd. Lifeguard, restrooms, no dogs, swimming, surfing, active shark area. Part of Cape Cod National Seashore, backed by high dunes. Handicapped-accessible restrooms.
- Rock Harbor Beach, Bay View

Rd. Small, marshy beach, warm water, portable toilet, no lifeguards, no dogs, free parking.

- Sunken Meadow, South Sunken Meadow Rd. Warm, calm waters, appeals to families with small children, portable toilet, limited parking.
- Thumpertown Beach, Thumpertown Rd. Warm saltwater, portable toilet, no lifeguard, no dogs. Only accessible by staircase (a good alternative is nearby Campground Beach).
- Wiley Park, 1400 Herring Brook Rd. Lifeguard, restrooms, no dogs on beach (dog-friendly walking trails nearby). Freshwater beach on Great Pond, playground, kids will like jumping off dock.

Falmouth

<https://www.falmouthma.gov/151/Beach>

- Bristol Beach, Menauhant Rd., E. Falmouth. Warm saltwater, lifeguards, portable toilet, moderately crowded, parking by week only.
- Chapoquoit Beach, off W. Falmouth Hwy & Shining Sea Bikeway. Waves, kiteboarders, body surfing, boogie boarding, stellar sunsets, no amenities.
- Falmouth Heights Beach, Grand Ave. Lifeguard, portable toilet, no dogs. Secure parking pass ahead of time. Lively atmosphere and stunning views of Nantucket Sound, warm saltwater.
- Grew's Pond, Goodwill Park, Gilford St. Lifeguard, portable toilet, free parking, no dogs. Falmouth's only freshwater beach, shaded beach area, walking trails, picnic areas, volleyball, playground. [Don't try to access via Rte 28, the gates are locked]
- Menauhant Beach, Menauhant Rd., E. Falmouth. Lifeguard, portable toilet, no dogs. Narrow, rocky, dotted with small jetties; on clear days,

Martha's Vineyard visible in the distance. East parking lot open to public. 200 parking spaces.

- Old Silver Beach, Quaker Rd., off Rte. 28A, No. Falmouth. Lifeguard, restrooms, food. Southern section open to public for a fee. Arrive after 5pm to catch the sunset over Buzzards Bay and avoid parking fees. Handicap restrooms/bathroom, ramp to beach. Mobic chair and beach wheelchair available but call ahead. Daily parking available for a fee.
- Stoney Beach, Gosnold Rd. Lifeguard, portable toilet, no dogs. Warm water, tucked between Woods Hole and Marine Biological Laboratory, not actually "stoney," small parking lot.
- Surf Drive Beach, 56 Surf Dr., off Main and Shore Sts. Lifeguard, restrooms, food, no dogs. Handicapped-accessible restrooms/bathroom. Mobicmat, Mobic chair and beach wheelchairs available but call to reserve. Panoramic views of Martha's Vineyard and Nantucket Sound. Daily parking available for a fee.
- Surf Drive Beach Extension, Surf Dr. and Mill Rd. Lifeguard, portable toilet, no dogs. Daily parking for a fee.
- Trunk River Beach, Oyster Pond Rd. Lifeguard, portable toilet, free parking, no dogs. Alongside a bike path, beach is lined with large boulders which can cause accessibility issues.
- Wood Neck Beach, Sippewissett Rd. Tidal pools, sandbars, grassy dunes, sparkling green marshland, horseshoe crabs and gritters galore.

Gloucester

gloucester-ma.gov/299/Beach-Information

- Cressy's Beach, lower end of Stage Fort Park. Rocky beach

BEACHES

continued on page 18



**2677 Broncos Highway,
Nasonville, RI**
(Former Roots & Shoots)
401-766-7333

Landscape & Masonry Materials

Homeowners & Contractors Welcome!

- Bulk Loam • Mulch • Stone
- Concrete & Mason Sand
- Compost • Grass Seed • Fire Pits
- Bluestone • PA Fieldstone • Granite
- Flagstone • Cobblestone
- Palletized Stone • Chimney Supplies
- Concrete & Mortar Products
- UniLock Pavers and Walls

Monday - Friday 7am - 4pm • Delivery Available





PURCHASE
TICKETS

SOUTHWICK
WILD
ALL-
ADVEN

SouthwicksZoo.co



CK'S ZOO FUN DAY ACTIVITIES

m | Mendon, MA



BEACHES

continued from page 15

overlooks Gloucester Harbor. Restrooms and food nearby. Secure parking in advance.

- Good Harbor Beach, Thatcher Rd./Rte. 127A. Lifeguard, food, restrooms and showers, trash carry-in/carry-out. Handicap accessible with drop-off area, beach wheelchair available. Secure parking ahead of time.

- Half Moon Beach at Stage Fort Park, Western Ave. off Route 133. Lifeguard, food, restrooms nearby at Visitor Center. Handicap accessible with a concrete ramp leading to beach.

- Long Beach, Rockport Rd. Lifeguard. Beach is long, flat, sandy, and crosses border of Gloucester and Rockport. Includes two lighthouses on Thatcher's Island. No public parking on Gloucester end, Rockport requires sticker (purchase at Rockport Chamber of Commerce or Rockport Town Hall).

- Pavilion Beach (aka The Fort), end of Stacey Blvd. Portable toilets a short distance away, parking limited. Home of the Greasy Pole Challenge in June.

- Plum Cove Beach, Washington St. Lifeguard, small beach, parking limited to resident beach sticker.

- The Fort (see Pavilion Beach above)

- Wingaersheek Beach, 232 Atlantic St. off Rte. 133. Lifeguard, food, restrooms and showers, trash carry-in/carry out. Handicap accessible parking with 16 handicapped spaces, beach wheelchair available. Runs along Annisquam River and Ipswich Bay.

Harwich

www.harwich-ma.gov/1042/Parks-and-Beaches

- Atlantic Ave. Beach, Off Ocean Ave. Small, great waves.
- Bank Street Beach, Bank St. Warm water swimming and beachcombing.

- Belmont Beach, path at Belmont Rd. & Chase Ave. Warm saltwater, no parking, no lifeguards, no restrooms, light crowds. Great place to walk and swim.

ant Rd. Large beach, soft sand, views of ocean. Sticker parking.

- Red River Beach, Depot Rd. Small beach. Daily pass required.

- Sand Pond, 180 Great Western Rd. Warm freshwater, restroom, no lifeguard, weekly parking passes only.

- Wixon Memorial Beach, off Cahoon Dr. Large beach, calm waters, parking for a daily fee.

Hopkinton

www.mass.gov/locations/hopkinton-state-park

Hull

- Nantasket Beach, 212 Nantasket Ave./Rte. 3A. Lifeguard, bathhouse, pavilion, playground, volleyball, biking, hiking. Handicap accessible restrooms and playground, beach wheelchairs and beach mat available; note, there are large cobblestones on this beach that may not let you get to the water in a beach wheelchair.

Ipswich

- Crane Beach, 310 Argilla Rd. Lifeguard, restrooms, fishing, walking trails, kayak rentals.
- Pavilion Beach, near Great Neck Park. Parking lot for residents only on weekends and holidays.
- Steep Hill Beach, at Crane Estate, parking at Castle Hill. Not a swimming beach.

Lynn

mass.gov/locations/lynn-shore-nahant-beach-reservation

- Lynn Shore & Nahant Beach Reservation, includes Long Beach and King's Beach, Lynn Shore Drive. Four miles of waterfront, public walkway, sand dunes, tide pools, ball fields, racquetball, tennis courts, play area, bathhouse, visitor center. Parking for a fee.

Manchester-by-the-Sea

manchester.ma.us/facilities/facility/details/Singing-Beach-11

- Singing Beach, 119 Beach St. Half-mile wide. Bathhouse, food, handicap accessible restroom. On weekends, Boy Scouts sell parking spots behind the train station (walk-on fee still applies).

Marshfield

<https://www.marshfieldpolice.org/marshfield-beaches/pages/beach-descriptions>

- Brant Rock, Ocean St. & Dyke Rd. Lifeguards, restrooms, parking fee.
- Fieldston Beach, end of Hartford Rd. Lifeguards
- Green Harbor Beach, end of Beach St. Lifeguards, portable restrooms, jetty, nearby parking.
- Humarock Beach, 24 Marshfield Ave. Situated in Scituate but accessible only through Marshfield. Limited on-street parking.
- Rexhame Beach, 350 Standish St. Lifeguards, snack bar, restrooms, basketball courts, beach cooking permits, sticker parking.
- Sunrise Beach, end of 9th Rd. Lifeguards.

<https://www.marthasvisit.com/beaches>

- Aquinnah Public Beach (see Moshup Beach below)
- Bend in the Road Beach, Edgartown. Lifeguard. Small beach on Nantucket Sound. Chilmark Pond Preserve, accessible by canoe or kayak.
- East Beach at Cape Poge Wildlife Refuge, Swimming beach accessible via Dike Bridge on Chappaquiddick. Free parking on Dike Rd. side of Dike Bridge.
- Eastville Beach, at bridge between Oak Bluffs and Vineyard Haven. Small waves, great for fishing.
- Edgartown Great Pond Beach, accessible by boat only.
- Fuller Street Beach (Starbuck's Neck Park), Fuller St., Edgartown. Small beach, near downtown, limited parking, near Lighthouse Beach.
- Great Rock Bight Preserve, 37 Brickyard Rd., Chilmark. Limited parking, accessible via lengthy hike over steep hillsides then down to the beach.
- Inkwell Beach, 83 Seaview Ave., part of Oak Bluffs Town Beach. Begins at Steamship Authority dock. Handicap accessible ramp. No lifeguard, restrooms, or food. Free parking. Find its history at marthasvisit.com/beaches/inkwell
- Jetty Beach, 75 East Chop Dr., Oak Bluffs. Calm, very low surf, ideal for young children.
- Joseph A. Sylvia State Beach (aka State Beach), Seaview Ave., between Oak Bluffs and Edgartown (Edgartown side is called 'Bend in the Road Beach'). No restrooms. Small waves, sandy, shallow waters, kitesurfing, fishing, limited parking, paddleboarding, kayaking, small craft boating, swim with caution. The bridge that separates the two sides of this beach is known as the "Jaws Bridge" after its memorable appearance in the 1975 movie. Free parking fills up quickly.
- Katama Beach (aka South Beach), Katama Rd., Edgartown. Portable restrooms, ample parking, strong waves and undertow. Use caution. Vehicles with permits allowed on marked trails.
- Lake Tashmoo Town Beach, Lake St., Vineyard Haven. Small beach near southern end of Lake Tashmoo.
- Lamberts Cove Beach, 281 Lamberts Cove Rd. Crystal blue water, soft white sand.



Illustration by Natalie Morris, a multimedia illustrator from Holyoke, Mass. Nat works primarily in painting, paper craft, and digital illustration. She specializes in art that is romantic, bubbly, very sparkly, and made with love! Check out natandthings.com to see more!

- Earle Road Beach, Earle Rd. Skimboarding and swimming
- Fernandes Bog, 213 Long Pond Dr. Warm freshwater, lifeguard, restroom, moderately crowded, good swimming, boating, kayaking.
- Grey Neck Beach, Grey Neck Rd. Warm saltwater, no lifeguard, no restroom, nice for walking and swimming
- Pleasant Road Beach, Pleas-

- Hopkinton State Park, 164 Cedar St. 1500-acre park includes swimming beaches with lifeguards, portable toilets, picnic areas.

Hyannis

See Barnstable above. Hyannis is one of seven villages that make up the Town of Barnstable.

"The Best Pizza In Town"

WWW.PEPPERONI-EXPRESS.COM

508.839.6040




PEPPERONI

EXPRESS

78 WORCESTER ST., RTE.140N, GRAFTON MA 01536

Martha's Vineyard

BEACHES

continued on page 19

BEACHES

continued from page 18

- Lighthouse Beach, off North Water St., Edgartown. No lifeguard, no restroom, street parking.
- Lobsterville Beach, Lobsterville Rd. Two miles of Vineyard Sound beach, includes fishing spot and a seagull nesting area. Limited parking.
- Long Point Beach (at Wildlife Refuge), access via Waldron's Bottom Rd., West Tisbury. Beach fronts on the ocean, huge waves.
- Menemsha Beach, off North Rd. Menemsha/Chilmark. Calm surf, lifeguard, restrooms, food, fishing, boat launching facility. Limited free parking.
- Moshup Beach (aka Aquinnah Public Beach), Gay Head, off Moshup Trail. 10-minute walk from parking lot, restrooms at beach entrance. A portion of beach is clothing-optional.
- Norton Point Beach, Edgartown. Over-sand driving with proper permit (thetrustees.org/program/mv-osv-permits). No lifeguard, swim at your own risk.
- Oak Bluffs Town Beach, off Beach Rd. Begins at Steamship Authority dock. Handicap accessible ramp. No lifeguard, restrooms, or food. Free parking.
- Owen Park Beach, off Main Street, Vineyard Haven. Short walk from Vineyard Haven Steamship Authority terminal. Lifeguard, restrooms and food nearby. Water calm and warm, great for kids. Handicap parking available.
- Sepiessa Point Reservation, West Tisbury. Accessible via short hiking trail. Calm waters.
- South Beach (see Katama Beach above)
- State Beach (see Joseph A. Sylvia State Beach above)
- Squibnocket Beach, State Rd. & Moshup Trl. Surfing, fishing.
- Tasmoo Beach (see Herring Creek Beach above)
- Tisbury Town Beach, Owen Little Way, Vineyard Haven. Lifeguard, fishing, lots of boats.
- Wasque Reservation, Edgartown. swimming beach on the ocean.
- Wilfrid's Pond Preserve, Vineyard Haven. Accessible via short hiking trail. Mashpee
- Attaquin Park, Lake Ave. Lifeguard, portable toilets, no dogs. Calm, shallow water, playground on beach. No option for daily visitor parking so be sure to purchase a \$50



Illustration by Toma Sargsya

weekly pass from the town ahead of time.

- John's Pond, Back Rd. Lifeguard, portable toilet, no dogs. Freshwater beach features a modern playground, covered picnic area and clean water for swimming, kayaking, canoeing and paddle boarding. Scattered pine trees provide some nice shaded areas on the shore. Parking lot requires the purchase of a parking pass ahead of time in-season.
- South Cape Beach, Great Oak Rd. Lifeguard, portable toilet, no dogs. Beach mat and beach wheelchair available. Mashpee's only ocean beach offers panoramic views of Martha's Vineyard. Beach is divided into a town-owned section and a state-owned section. Daily parking on state-side only.

Medford

- Shannon Beach (lake), 481 Mystic Valley Pkwy, Medford. No dogs or other pets except service animals.

Nahant

mass.gov/locations/lynn-shore-nahant-beach-reservation

- Lynn Shore & Nahant Beach Reservation, includes Long Beach and King's Beach, Lynn Shore Drive. Four miles of waterfront, public walkway, sand dunes, tide pools, ball fields, racquetball, tennis courts, play area, bathhouse, visitor center. Parking for a fee.
- Nahant Beach, 1 Little Nahant Rd. (see Lynn Shore & Nahant Beach Reservation above)

Nantucket

nantucket.net/beaches

- 40th Pole, 151 Eel Point Rd. No lifeguard. Water is shallow and clear, soft white sand and lots of seashells. Greenhead flies and mosquitoes can be bothersome on days with little wind.
- Brant Point Beach, 2 Easton St. No lifeguard, strong current, high boat traffic. Scenic beach with Brant Point Lighthouse, second oldest lighthouse in the US.
- Children's Beach, Harbor View Way. Lifeguard, restrooms and showers, playground, bandstand, food. Easy walk from town down South Beach Street and off Harbor View Way. Flotation devices not permitted in the guarded area.
- Cisco Beach, 274 Hummock Pond Rd. Lifeguard, no facilities, occasionally foggy, beware rip tides and undertow. Soft sand, popular with surfers and young adults.
- Dionis Beach, 2 Bathing Beach Rd. Lifeguard, rest-

rooms, changing room, rinse faucet, vending machines, carry-in/carry-out trash. Walk to beach can be difficult. Sheltered by dunes, calm waters, hand-packed sand, lots of shells. Sections may be closed during shorebird nesting season.

- Fisherman's Beach, 39 Nonantum Ave. No lifeguard, no bathrooms, no food service. Surf can be rough, and watch out for undertow. Steep steps lead down to the beach.

- Francis Street Beach, 76 Washington St. Five-minute walk from Main Street. No lifeguard. Restroom, jungle gym, kayak rental.

- Jetties Beach, Bathing Beach Rd. Lifeguard, calm surf, restrooms (handicap accessible), bathhouse, and food. Shells and seaglass, windsurfing, sailboat and kayak lessons, annual Sand Castle and Sculpture Contest, and Boston Pops concert in August.

- Ladies Beach at Smooth Hummocks Coastal Preserve, Mioxes Pond Rd. Lifeguard, no restrooms. Accessible via footpath through the dunes.

Excellent body surfing and boogie boarding during low tide, ideal for strong swimmers and surfers.

- Low Beach, between Sconset and Tom Nevers Pond. No lifeguard or facilities, surf can be heavy with strong currents. Sweeping views.

- Madaket Beach, 6 Ames Ave. No lifeguard, no restrooms. Severe erosion, caution is urged.

- Miacomet Beach, 36 West Miacomet Rd. Lifeguard in some areas, parking, no facilities or food. Surf and rip currents can be dangerous.

- Miacomet Pond, 178 Miacomet Ave. No lifeguard, no facilities. Freshwater pond, good for young children. Snapping turtles may be encountered.

- Nobadeer Beach, 69 Nobadeer Ave. Lifeguard, food trucks, plenty of surf, difficult to access due to steep incline, popular with youth.

- Pebble Beach (see Tom Nevers Beach below)

- Pocomo Beach, Pocomo Rd. No lifeguards or facilities. Limited parking, can be buggy. Great for kayaking and windsurfing beginners.

- Quidnet Beach & Sesachacha Pond, Sesachacha Rd. off Quidnet Rd. No lifeguard, no facilities, no food, little parking. No waves, no seaweed. Kayaking and sailing but bring your own equipment. Accessible via a short walk over the dunes.

- Sand is fine and soft. Good shelling, good view of Sankaty Light.

- Sconset Beach (see Siasconset Beach below)

- Siasconset Beach (aka 'Sconset Beach), 18 Ocean Ave. Lifeguard. Short walk to food and restrooms in the village of 'Sconset. Suitable for senior citizens (no steep inclines), accessible by NRTA shuttle. Surf can be heavy with strong currents.

- Steps Beach, 23 Lincoln Ave. No lifeguard or facilities, limited parking. Gentle surf, sandbar, steep steps, lovely views. Bioluminescent creatures can be seen in the water at night in Aug. and Sept.

- Stone's Beach, 45 Nonantum Ave. No lifeguards, facilities, or food service. Surf can be rough.

- Surfside Beach, end of Surfside Rd. Lifeguard, restrooms, showers, food. Good for shelling in early morning, surfcasting in evening. Getting to the shoreline from the parking lot requires a long walk through gently sloping, soft sand.

BEACHES

continued on page 20

Join us
Wednesdays
for MUSICAL
BINGO!

Quaker Tavern

466 Quaker Highway • Rte. 146A Uxbridge, MA

TUESDAYS
TRIVIA NIGHT
in the Lounge
Reservations
Recommended

WEDNESDAYS
WINE SPECIAL
Any Bottle of Wine
1/2 PRICE
with any entrée
(dine-in only)

THURSDAYS
BURGERS
& **BEERS**
(dine-in only)

PATIO
NOW
OPEN!

KENO

(508) 779-0901 • Tues.-Sat. 12-9pm

THELOTTERY

BEACHES

continued from page 19

- Tom Nevers Beach (aka Pebble Beach), 51 Wanoma Way. No lifeguard, no facilities. Heavy surf, coarse sand, sometimes foggy, access can be difficult. Excellent surfcasting.
- Washing Pond Beach (aka Water Tower Beach), 38 Washing Pond Rd. No lifeguard, no facilities. Tide pools, few waves, no stairs but must trek down dune path to reach beach. Beach ends at retaining wall. Good shelling.
- Water Tower Beach (see Washing Pond Beach above)
- Western Avenue Beach, Western Ave. Long set of stairs and a hike. Three parking spots.

Orleans

<https://town.orleans.ma.us/1797/Beaches>; <https://town.orleans.ma.us/549/Beach-Webcams>

- Crystal Lake, Monument Rd. Portable toilet, no lifeguard. Freshwater, swimming, canoeing, kayaking, stocked with fish, limited parking.
- Nauset Beach, Beach Rd., East Orleans, off Route 28. Lifeguard, restroom, food. Cold water, seal sightings, popular area for sharks so use caution when swimming. Hosts summer concert series.
- Pilgrim Lake, Herring Brook Way. Restroom facilities, no lifeguard, free parking, shady areas. Freshwater pond for swimming and kayaking, shallow marshy waters.
- Rock Harbor, Bay View Rd. Portable toilet, no lifeguard, free parking. Small marshy beach, explore flats at low tide. Swimming and boating prohibited in the channel.
- Skaket Beach, Skaket Beach Rd., off Route 6A on the east end of the Cape Cod Canal. Lifeguard, restrooms and rinse station, food. Tidal flats ideal for kids. Parking stickers may be purchased at the Nauset Beach Administration Building.

Plymouth

seeplymouth.com/listings/things-to-do/outdoors-and-adventure/beaches-parks-and-gardens

- Fresh Pond, 220 Bartlett Rd. Lifeguard, bathhouse. No kites or drones, no jet skis; dogs must be on a 6ft leash and under control at all times. Daily parking pass required.
- Hedges Pond Recreational Area and Preserve, 158 Hedges



Illustration by Vivian Hill, a digital illustrator who is focused on narrative, emotionally charged artwork. To see more of her work, please check out vivianhillarts.com!

Pond Rd. Lifeguard, restrooms, horseshoe pits, beach volleyball court, tennis courts, basketball court, playground, hiking trail.

- Morton Park, Morton Park Rd. Lifeguard on Main Beach only. Bathhouse, portable toilet, beach wheelchairs.
- Nelson Memorial Beach Park, Water St. Restrooms, food, playground, benches and picnic tables, splash pad, handicap accessible, free parking.
- Plymouth Beach and Long Beach, 136 Warren Ave. Lifeguard, restrooms, food. Dogs allowed in certain areas.
- White Horse Beach, Taylor Ave. Lifeguard, portable toilets, limited number of beach wheelchairs available. Watch for shark alert flags.

Provincetown

nps.gov/caco/planyourvisit/fees.htm

- Cape Cod National Seashore beach entrance fees are collected daily from late June through Labor Day, and on weekends and holidays from Memorial Day to the middle of Sept. at select beaches. All passes (including the America the Beautiful series) are only sold during the months the fees are collected. The six national seashore beaches where fees are collected are Coast Guard and Nauset Light in Eastham, Marconi in Wellfleet (beach stairs closed), Head of the Meadow in Truro, and Race Point and Herring Cove in Provincetown. Passes can only be

purchased at those locations (they are not sold at park visitor centers).

Quincy

www.quincyma.gov/departments/natural_resources/park/beaches.php

- Avalon Beach, Avalon Rd. Beachfront, swimming, benches, picnic area.
- Back (Delano) Beach, Delano Ave. & Utica St. Long-distance swimming, no parking.
- Baker (Broadly) Beach, Palmer St. near Broadly St. Beach, playground, no parking.
- Edgewater Drive Beach, Hough's Neck, adjacent to Raccoon Island. Swimming, benches, picnic area.
- Fire Station Beach, at Fore River & Rock Island Cove.
- Front (Heron) Beach, Adams Shore. Swimming, playground, limited on-street parking.
- Mound Street Beach, Mound St. Sandy beach, swimming, picnic area, adjacent soccer fields and playgrounds.
- Nickerson Beach, Dorchester St. MBTA accessible, limited on-street parking. Views of Boston Harbor Islands.
- Orchard Beach, Bayside Rd. Swimming, walks along Squantum peninsula.
- Parkhurst (Perry) Beach, Bayswater Rd.
- Rhoda Beach, Hough's Neck. Two small beachfront areas, no parking.
- Wollaston Beach, Quincy Shore Dr. Lifeguard, bathhouse with public restrooms, play-

ground, food, beach wheelchairs. Free on-site parking.

Revere

mass.gov/locations/revere-beach-reservation

- Revere Beach, Revere Beach Blvd. Lifeguard, restroom, pavilion, playground, historic site, bandstand, athletic fields, fishing, beach wheelchairs and beach mat, paved walkways, accessible restrooms. At times, sections closed due to Piping Plover nesting. Four-hour parking available, accessible by MBTA. First public beach in the US.

Rockport

<https://massattractions.com/beaches-rockport-ma/>

- Back Beach, Beach St. Rocks and sand, gentle current, toilets. Limited meter parking. Shuttle trolley for visitors from downtown.
- Cape Hedge Beach, 77 Bearskin Neck Rd. No services. Very limited private parking available.
- Front Beach, Beach Street. Lifeguard, portable toilet, food nearby. Limited meter parking. Shuttle trolley for visitors from downtown.
- Long Beach, Thatcher Rd./off Rte 127A. Lifeguard. Beach is long, flat and sandy, and crosses border of Gloucester and Rockport. Includes two lighthouses on Thatcher's Island. No public parking on Gloucester end; Rockport requires sticker (purchase at Rockport Chamber of Commerce or Rockport Town Hall).

Salisbury

salisbury.beach@state.ma.us

- Salisbury Beach, 1 Beach Rd., in the Salisbury State Reservation. Swimming, boating, fishing, trailer camping, bathhouse, comfort stations, boardwalks, pavilion, playground. Beach mat and beach wheelchair available.

Sandwich

www.sandwichmass.org/168/Beaches (all beach facilities open June 20)

- East Sandwich Beach I, 147 N. Shore Blvd. Requires climbing through dunes. Small parking lot.
- First Beach, Town Neck Rd. & Freeman Ave., accessible access point.
- Lowell Holly Reservation, S. Sandwich Rd., includes a swimming beach with no lifeguard on duty.
- Town Neck Beach, 62 Wood Ave. No lifeguards, scenic views, a bit rocky, large parking

lot (175 spaces) for fee.

Southwick

- Congamond Lakes, 90 Point Grove Rd.
- Southwick Town Beach, 14 Beach Rd. Lifeguards on duty at all times. \$6/pp per day

Truro

- Ballston Beach, Route 6 to South Pamet Rd. Ocean beach with heavy surf and occasional dangerous undertow. No lifeguard, no snack bar. Parking before 4 p.m. is only for town residents and guests staying in Truro (parking sticker required).
- Beach Point Landing, 207 Shore Rd. Small, rocky, lined with seaweed, limited parking.
- Corn Hill Beach, Off Route 6. Portable toilet. No lifeguard, no food. Handicap accessible, beach wheelchairs available. Daily parking available.
- Head of the Meadow Beach, North Truro. Lifeguard, portable toilet, food, volleyball court, handicap accessible, handicap beach wheelchairs. Daily parking available. Part of National Park Service.
- Longnook Beach, end of Long Nook Rd. Boogie-boarding, nude sunbathing. Parking sticker required.
- Pond Village Beach, Pond Rd., Handicap parking, fishing. Parking sticker required.
- Ryder Beach, 4 Ryder Beach Rd. Portable toilet, no lifeguard, handicap parking, parking sticker required.

Wareham

www.savebuzzardsbay.org/places-to-go/

- Onset Beach, 182 Onset Ave. Lifeguard, restrooms, showers, food, metered parking. Swimming, beachcombing, shellfishing, paddling, fishing.
- Swift's Beach, 15 Roby St. Restrooms, no lifeguard. Swimming, shellfishing, paddling, boating. Parking for a fee.

Wellfleet

<https://www.wellfleet-ma.gov/beaches>

- Burton Baker Beach, 183 Samoset Ave. No lifeguard. Restroom available. Sticker required.
- Cahoon Hollow Beach/White Crescent Beach, 1140 Cahoon Hollow Rd. Lifeguard, food, restrooms. Parking for a daily fee.
- Duck Harbor Beach, Duck Harbor Rd. Handicap restroom available, no lifeguard, no food.

BEACHES

continued on page 21

BEACHES

continued from page 20

- Gull Pond Landing Beach, 140 Mill Hill Rd. Shady, sandy beach, warmer waters, great spot for exploring non-ocean waters.
- Indian Neck Beach, 235 Nauset Rd.. Restrooms available, parking sticker required.
- Lecount Hollow Beach (see Maguire's Landing below)
- Maguire's Landing (aka Lecount Hollow Beach), 500 Lecount Hollow Rd. Lifeguard, handicap restroom, food. Parking sticker required.
- Marconi Beach, 99 Marconi Site Rd., National Seashore. Lifeguard, handicap restroom. Parking for a daily fee.
- Mayo Beach, 35 Kendrick Ave. Free parking. No bathrooms, no lifeguard, no food.
- Newcomb Hollow Beach, 1175 Gross Hill Rd. Lifeguard, handicap restroom, food. Parking sticker required.
- Wellfleet Kettle Ponds, Gross Hill Rd. Tranquil, limited parking. Visitors can swim, kayak, canoe, fish, scuba dive.
- White Crest Beach, 520 Ocean View Dr. Lifeguard, handicap restroom, food. Park-

ing for a daily fee.

Westport

mass.gov/locations/horseneck-beach-state-reservation

- Horseneck Beach State Reservation, 5 John Reed Rd. Lifeguard, showers, playground, wheelchair accessible. Beach mat provided, beach wheelchairs available, accessible restrooms. Beach has cobblestones, you may not be able to get to the water in a beach wheelchair; you will not be able to go into the water in a floating beach chair if lifeguard determines surf conditions are too risky.

Worcester

- Bell Pond, Belmont St. Formerly known as Bladder Pond. Approximately 10 acres.
- Coes Pond Beach, 200 Mill St. Updated accessibility features; beaches, pools, spray parks at www.worcesterma.gov/parks/beaches-pools-spray-parks
- Indian Lake Park, 34 Sherburne Ave., small beach within a residential neighborhood, limited parking.
- Shore Park Beach, 85 Shore Dr., large public beach, renovated bathhouse, picnic area.

Yarmouth

<https://www.yarmouth.ma.us/652/Beaches>

- Bass Hole Beach, off Center St., Yarmouth Port. Restrooms, no lifeguard. Boardwalk, pavilion, picnic area. Paid parking.
- Bass River Beach (see Smuggler's Beach below)
- Bayview Beach, end of Bay View St. (road past Cape Cod Hospital parking lot). No lifeguard, portable toilet. Handicap accessible.
- Colonial Acres Beach, end of Standish Way. No lifeguard, portable toilet, small beach.
- Dennis Pond Beach, 105 Summer St. Portable restroom. No lifeguards.
- Englewood Beach, end of Berry Ave. West Yarmouth. No lifeguard, no restrooms. Handicap accessible, jetty, marina, small beach.
- Parker's River Beach, off South Shore Dr., So. Yarmouth. Bathhouse, shower, food, playground, concrete walk on seawall.
- Seagull Beach, off Seagull Rd., off South Sea Ave. No lifeguard. Large parking lot. Bathhouse, food, handicap accessible.
- Seaview Beach, off South Shore Dr., So. Yarmouth. No

lifeguard. Portable toilet, concrete walk on seawall, picnic area. Paid parking.

- Smuggler's Beach (fka Bass River), South Shore Dr., So. Yarmouth. No lifeguard. Bathhouse, food truck, boat ramp, fishing deck. Paid parking.
- Thatcher Park Beach - 61 South Shore Dr., So. Yarmouth. No lifeguard, no restrooms. You'll need to navigate a small set of stairs to get to beach. Free parking (19 spaces).
- Wilbur Park, Highbank Rd., So. Yarmouth. No lifeguard, no facilities.
- Windmill Beach, River St., off Rte 28, So. Yarmouth, site of the Judah Baker Windmill (circa 1791). Tiny beach, only 4 parking spots, no lifeguard, no facilities. Food nearby. A quiet sandy beach overlooking the Bass River; stairs lead down to beach. Parking sticker required.

bus Day. Admission fee.

Georgetown

- Reid State Park, Route 127. Picnic areas with grills, snack bar, bathhouses with fresh-water, showers and toilets. Entrance fee. Partially closed due to storm damage.

Kennebunk

- Kennebunk Beaches, off Route 9. Three beaches connected by sidewalks: Gooch's Beach, Middle Beach, Mother's Beach. Lifeguard at Gooch's and Mother's. Park in spots along the beaches, a beach pass is required to park at the beach, available at beach kiosks or at Town Hall.

Ogunquit

- Ogunquit Beach, 124 Beach St. Lifeguard, food, restrooms. Paid parking available.

Old Orchard

- Old Orchard Beach, 11 First St. Seven miles of beach. Lifeguard on duty, food concessions, amusements. Nearby private lots.

Saco

- Bayview Beach, Bayview Rd./

MAINE

visitmaine.com/places-to-go/the-maine-beaches

Cape Elizabeth

- Crescent Beach State Park, 109 Bowery Beach Rd. Picnic area, playground, snack bar, bathhouse. Open sunrise to sunset Memorial Day to Colum-

BEACHES

continued on page 22

Garages
Additions
Modular Homes
In-Law Apartments

STANDARD GARAGE PACKAGES INCLUDE:

- Building Plans
- Excavation and Backfill with Existing Material
- Foundation with 4' Frost Wall Footings
- 4" Reinforced Concrete Floor
- 2" x 6" Construction
- Plywood Roof and OSB Wall Sheathing
- 2 Double Hung Windows
- Vinyl Siding
- 2 - 9' x 7' Overhead Garage Doors
- 30 Year Architectural Shingles



WWW.GBIAVIS.COM
(508) 476-1500



CALL TODAY FOR A FREE ESTIMATE

Seaside Ave. Popular, accessible beach destination located between Kinney Shores and Ferry Beach State Park. Lifeguard on duty from mid-June to late August.

- Kinney Shores, Oceanside Dr., just south of Bayview Beach. Wide shoreline and tidepools adjacent to Goosefare Brook.
- Ferry Beach State Park, 95 Bayview Rd. Swimming, picnic area, 117-acre park, trail hiking, nature programs.

Scarborough

- Ferry Beach, Ferry Rd. No lifeguard. Restrooms with showers, food, surfing, surf casting. White sandy beach. Parking for a fee.
- Higgins Beach, 34 Ocean Ave. No lifeguard. Restrooms with showers, surf casting, boogie boarding, shelling, walking. Parking at 39 Ocean Ave (off Route 77/Spurwink Rd.) and limited on-street parking.
- Pine Point Beach (Hurd Park), Avenue 5 off King Street. No lifeguard. Restrooms with showers, surf casting, surfing, food. Parking for a fee.
- Scarborough Beach - State Park, 418 Black Point Rd. Lifeguard, restrooms, food. Daily rentals of chairs, umbrellas, boogie boards, surfboards, paddleboards, kayaks. Paid parking available.

Wells

- Crescent Beach, Ocean Ave.

Quiet beach. Parking available at the Gold Ribbon Avenue lot off Webhannet Drive.

- Drake's Island Beach, off Route 1. Lifeguard and restrooms. Limited free parking.
- Moody Beach, end of Ocean Ave. Restrooms. You can walk for miles on Moody Beach, which becomes North Beach, then Footbridge Beach, then Ogunquit Beach. Paid parking.
- Wells Beach, 100 Atlantic Ave. Daily parking available.
- Wells Harbor Beach, end of Harbor Rd. No lifeguard. Restroom, playground, picnic tables, free parking. Lots of sand bars and tidal pools with crabs.

York

- Short Sands Beach, in Ellis Park, off Route 1A. Lifeguard, restrooms, playground, gazebo, basketball courts, food, one beach wheelchair available. Free concerts and entertainment in the park.
- Long Sands, off Route 1A. Lifeguard, restrooms, surfing, raft and umbrella rentals, one beach wheelchair available. Metered parking. Handicapped parking and access ramps near the bathhouse.

NEW HAMPSHIRE

visit-newhampshire.com/seacoast/beaches

Hampton

- Hampton Main Beach, at

Ocean Blvd. Band shell with amphitheater, comfort station, first aid. Metered parking along Ocean Blvd.

- Hampton State Beach, Route 1A. Lifeguard, restrooms, parking, food, soft and white sand, tide pools, massive natural wall of rocks. Parking for a fee.
- North Beach (aka The Wall), Route 1A, Hampton Beach. Lifeguard, bathhouse, handicap accessible (across from 18th Street). Limited metered parking.

North Hampton

- North Hampton State Beach, Route 1A. Lifeguard. Walk to restrooms on Ross Ave., and at North Beach and Jenness Beach.

Rye

- Jenness State Beach, 2280 Ocean Blvd. Lifeguard, bathhouse, picnicking. Metered parking.
- Wallis Sands State Beach, 1050 Ocean Blvd. Lifeguard, bathhouse, showers, store, admission fee by vehicle.

RHODE ISLAND

visitrhodeisland.com/things-to-do/beaches-water-sports/beaches/state-beaches/

Block Island

- Charleston Beach, Champlin Rd. Fence to lock bikes. Path to beach, not ideal for swimming. No services available. Limited parking.

- Crescent Beach (see Fred Benson Town Beach)
- Fred Benson Town Beach (aka Crescent Beach), 7 Corn Neck Rd. Lifeguard, restrooms, food, showers, lockers, snacks. Daily rentals available (chairs, umbrellas, cabanas, boogie boards).
- Mansion Beach, Corn Neck Rd. Not easily accessed. No services. Waves good for body surfing and beach combing.
- Scotch Beach, Scotch Beach Rd. No lifeguard, no facilities (but can walk to nearby Fred Benson Town Beach). Big waves, few rocks, great for body surfing and boogie boarding.

Jamestown

- Mackerel Cove, 1-53 Beaver-tail Rd. Lifeguard, restroom, lemonade food truck. Paid parking.

Middletown

- Sachuest Beach (aka Second Beach), 315 Sachuest Point Rd. Lifeguard, restrooms, showers, food, picnic area, surfboard lessons and rentals. Paid parking.

Narragansett

- Roger W. Wheeler State Beach (fka Sand Hill Cove), Sandy Hill Cove Rd. Lifeguard, coin-operated hot shower, picnic tables, playground. Paid parking.
- Salty Brine State Beach (formerly Galilee State Beach), Route 108, Galilee. Lifeguard, restroom, coin-operated hot showers, food, boardwalk along the jetty with overlook platforms and decks. Electricity for the facilities is powered by a small wind turbine.
- Sand Hill Cove (see Roger W. Wheeler State Beach above)
- Scarborough State Beach, 870 Ocean Rd. Lifeguard, food, gift shop, hot and cold showers, picnicking, surfing, concrete boardwalk with gazebos, an observation tower, and observation glasses. Paid parking.

Newport

- Easton's Beach (aka First Beach) 175 Memorial Blvd. Restrooms, food trucks, playground, carousel, aquarium. Newport's largest beach and recreation area. Paid parking.
- First Beach (see Easton's Beach above)
- Fort Adams State, Ocean Dr. Lifeguard, restrooms (wheelchair accessible), showers, picnic area. Small beach overlooks Newport Harbor with calm water and a roped-off swimming area perfect for kids. Free parking.
- Gooseberry Beach, 123

Ocean Ave. Located within a protective cove, minimal waves. Lifeguard, food. Paid parking. King Park Beach, Wellington Ave. Restroom, food, playground, gazebo.

South Kingstown

- East Matunuck State Beach, 950 Succotash Rd. Lifeguard, accessible restroom, indoor heated showers, shade pavilion, beach wheelchairs available, electric vehicle charging, picnicking. Parking fee.
- Town Beach at Matunuck, Matunuck Beach Rd. Restrooms, pavilion with showers, vending area, picnic areas. Beach pass required.

Tiverton

- Fogland Beach, Fogland Rd. Lifeguard, restroom, showers, food, playground, windsurfing, kayaking, stand-up paddleboarding, kite surfing, trash carry-in/carry-out. Daily parking available.

Warwick

- Buttonwoods Beach, Asylum Rd. Walking, swimming, restrooms, picnic area, playground, sports field/courts. Scenic views overlooking Greenwich Bay.
- Conimicut Point Beach, Point Ave. Scenic waterfront park and launch site for canoes and kayaks, with sandy beaches, a picnic area, playground, and views of Conimicut Point Lighthouse.
- Gorton Pond, 3011 Post Rd. Freshwater site, 58 acres with a small public access beach, boating via a boat ramp, handicapped-accessible fishing dock.
- Oakland Beach, end of Oakland Beach Ave. Bay inlet saltwater beach, food nearby. Swimming, playground, classic car cruise nights, handicap accessible boat ramp and kayak launch (on Bay Ave.).

Westerly

- Carousel Beach (see Watch Hill Merry-Go-Round Beach below)
- Misquamicut State Beach, 257 Atlantic Ave. Lifeguard, restrooms, food, outdoor showers and heated indoor showers, electric vehicle charging, playground, accessible beach wheelchairs. Parking fee.
- Watch Hill Merry-Go-Round Beach (aka Carousel Beach), 153 Bay St. Home of the flying horses carousel since 1888. Lifeguard, restroom, beach showers, rentals, mobi-chair beach wheelchair and mobimat available.

Gibson's Natural Pet Resort

Lodging ~ Daycare
Grooming
Training
Pet Supplies

139 Upton St. (Rt. 140),
Grafton, Ma 01519
Phone: 508-839-1757
Fax: 508-839-1736

Hours: Mon.-Thurs. 6:30am to 6pm
Fri. 9:30am-4pm Closed for lunch 12-1pm
Sat. 8am to noon Sun. 5pm to 6pm only



Grafton@GibsonsNaturalPet.com
www.GibsonsNaturalPet.com



Rainy Day Activities

BOWLING ALLEYS

Bowlero

101 Southbridge St., Auburn
508-791-5700
bowlero.com/location/bowlero-auburn

50 lanes of bowling, arcade, food, drink

Bayberry Bowladrome

326 Main St., Spencer
508-885-4876
www.bayberrybowl.com
Candlepin bowling, arcade, billiards

Bogey Lanes

199 North Brookfield Rd., E. Brookfield
508-867-6629
bogeylanes.com
Candlepin, minigolf, snack bar, pool tables, arcade

Bowlero Shrewsbury

405 Boston Turnpike, Rte. 9, Shrewsbury
508-754-7050
bowlero.com

40 bowling lanes, arcade, pool tables, sports bar

Mohegan Bowl

51 Thompson Rd., Webster
508-949-2695
moheganbowl.com

Six 10-pin lanes, 14 candlepin lanes, game room, laser tag, food, drinks

Spartime Recreation

117 Church St., Whitinsville
508-266-0699
bowlspartime.com
Leagues, live entertainment, daily specials, arcade, air hockey, pool tables, beer/wine/hard seltzers, food from The Neighborhood Kitchen.

GET ACTIVE

Apex Entertainment

21 Apex Dr., Marlborough
508-251-8666
Indoor go-karts, bowling, laser tag, ropes course, arcade, bumper cars, etc.

Bear's Play Space

1 Gorham St., Worcester
bearsplayspace.com
Great for babies, toddlers, and preschoolers. Open play sessions, sensory play

Central Rock Gym

299 Barber Ave., Worcester
508-852-7625
centralrockgym.com/worcester
Indoor climbing, yoga, youth summer programs, Belay, day programs, and more

Soccer Asylum

603 Pleasant St., Paxton
508-459-0026
soccerasylum.com
Sports performance center. Gym, pool, clinics

Sterling Gym

15 Industrial Dr., Sterling

sterlinggym.com

Summer camps and classes, dance, acrobatics, Ninja challenge, special needs gymnastics, and more

Whitinsville Community Center

60 Main St., Whitinsville
508-234-8184
whitincommunitycenter.com

Aerobics, basketball, the fitness center, racquetball, tennis, yoga, Camp Whitin, and more

Worcester Public Library Children's Room

3 Salem Sq., Worcester
508-799-1655

A hidden gem with play areas, activities, events, and museum passes you can borrow.

YMCA/YWCA of Central Massachusetts

Various locations including Fitchburg, Leominster, Southbridge, Westborough, and Worcester

ymcaofcm.org/locations
Numerous programs for adults and kids, including summer camps

MUSEUMS

American Antiquarian Society

185 Salisbury St., Worcester
508-755-5221

americanantiquarian.org
Rare early American books, newspapers, and prints.

American Heritage Museum

568 Main St., Hudson
americanheritagemuseum.org
Massive collection of military artifacts, living history events, tank rides/driving programs

ArtsWorcester

55 Salisbury St., Worcester
508-799-4406
worchesterart.org
A 35,000-piece collection of paintings, sculpture, decorative arts, photography, prints, drawings and new media, spanning over 5,000 years of art and culture. Special exhibits and

Illustration by Finnegan Richards



Illustration by Parker Cook

events.

Ecotarium

222 Harrington Way, Worcester
508-929-2700

ecotarium.org

Science and nature museum with indoor and outdoor interactive exhibits for everyone.

Clara Barton Birthplace Museum

66 Clara Barton Rd., North Oxford
508-987-2056 x 2013
clarabartonbirthplace.org
Clara Barton was the founder of the American Red Cross.

Museum open seasonally and by appointment. Various programs for all age groups.

Fruitlands Museum

102 Prospect Hill Rd., Harvard
thetrustees.org/place/fruitlands-museum
Offers a diverse collection of art and material culture on 210 acres of land, stunning views, and miles of walking trails.

Icon Museum and Study Center

203 Union St., Clinton
978-598-5000
museumofrussianicons.org
Formerly known as the Museum of Russian Icons, offers insight into beauty, history, and spirituality of various icons. Building complex includes a former historic mill, courthouse, and jail.

International Museum of WWII

8 Mercer Rd., Natick
508-651-1944
museumofworldwar2.org

Museum of Worcester

30 Elm St., Worcester
www.worcesterhistory.org

Old Sturbridge Village

1 Old Sturbridge Village Rd., Sturbridge
800-733-1830
osv.org

The largest outdoor history museum in the Northeast, depicts a rural New England

town of the 1830s. Step inside more than 40 historic buildings, and explore homes, meetinghouses, a district school, country store, bank, working farm, three water-powered mills, and trade shops, all situated on more than 200 scenic acres. Talk with authentically-costumed historians and see heritage breed farm animals.

Optical Heritage Museum

12 Crane St., Southbridge
774-230-8016
opticalheritagemuseum.com
Celebrating the history of optics in America with thousands of spectacles, ophthalmic items, microscopes, lensometers and more.

Salisbury Mansion

40 Highland St.
508-753-8278

Samuel Slater Experience

31 Ray St., Webster
508-461-2955
samuel Slater experience.org
A historical museum which will focus on textile manufacturing and the life and work of Samuel Slater (1768 – 1835), called by some the "Father of the American Industrial Revolution."

Willard House & Clock Museum

11 Willard St., North Grafton
508-839-3500
willardhouse.org
Guided tours are available Thurs. through Sat., at 10:30 a.m. and 2 p.m., and are by appointment only.

Worcester Art Museum

(see ArtsWorcester above)

Worcester Historical Museum

30 Elm St., Worcester
508-753-8278
worchesterhistory.org
Devoted to local history, includes a research library of over 7,000 titles, an archive with thousands of documents. Special events and programs. Founded as the Worcester Society of Antiquity in 1877 by Samuel E. Staples (1822-1902) at his home at 1 Lincoln Place along with "four history devotees."

Museums and Galleries State-wide

For many more museums and galleries around Massachusetts, visit www.visit-massachusetts.com/state/museums-and-galleries/

When planning a trip to any of these museums, consider checking with your public library to see if they have discount admission passes.

Outdoor Activities

MINI GOLF

Crystal Caves

790 Southbridge St., Auburn
508-832-0797

cyrstalcaves.com

18 holes of minigolf, eight batting cages, trampolines, ice cream

Golf on the Village Green

315 Worcester St., Natick
golfonthevillagegreen.com

Kimball Farm Miniature Golf

400 Littleton Rd., Westford
978-952-8100

kimballfarm.com

A sundae tradition for 85 years, also 50 acres of fun activities including mini golf, bumper boats, batting cages, and more

Longhi's Golf

300 Feeding Hills Rd., Southwick

413-569-0093

www.longhisgolf.com

Mini golf, driving range, par 3-4 course.

Mini Golf on the Go

36 Lanides Ln., Leominster
978-251-5333

www.minigolfonthego.com

Monster Mini Golf (indoor)

1560 Boston Providence Hwy,

Norwood

781-762-3100

monsterminigolf.com

Mulligan's Miniature Golf

124 Leominster Rd., Sterling
978-422-5022

mulligansminigolf.com

Ranked 12th best mini golf in USA, new arcade, glow-in the-dark minigolf on Wed. in July and August.

Putts & More

750 Concord St., Holliston

508-561-2902

puttsandmore.com

Puttshack - Natick (indoor)

1245 Worcester St., Natick

508-545-7888

puttshack.com

West End Creamery

481 Purgatory Rd., Whitinsville
508-234-2022

westendcreamery.com

Mini golf 18 hole course, Ice cream, adventure farm with 25+ farm-themed games and activities

COOL OFF

Assabet Park Splash Pad

34 South St/Rte 135,
Northborough

508-393-5034

Free, town-run, everyone welcome.

Breezy Picnic Grounds & Waterslides

520 Northwest Main St.,
Douglas

508-476-2664

breezysummer.com

Three 300-foot water slides with unlimited rides, lake swimming, picnic grounds

Choate Park & Splash Pad

1 Oak St., Medway

508-321-4740

medwayma.myrec.com

Tennis courts, playground, walking path, large pond, picnic areas, spray pad

Davis Farmland Play & Spray

145 Redstone Hill Rd., Sterling
978-422-6666

davisfarmland.com/spray

Two spray pads (toddlers, multi-ages), slip & slide, inflatable waterslide, and more.

DISC GOLF

DGC = disc golf course

Barre Falls Dam

200 Coldbrook Rd., Hubbardston

978-928-4712

www.nae.usace.army.mil/Missions/Recreation/Barre-Falls-Dam/

Authorized by Congress in 1941 to reduce flood damage.

Buffumville Lake

229 Oxford Rd., Charlton
recreation.gov/gateways/205

18 professional holes,

12 amateur holes for all ages

Charlton Woods - Oakwood

73 Jones Rd., Charlton

www.dgcoursereview.com/

courses/charlton-woods-oakwood.5430

18 holes

Dacey Community Field

700 Lincoln St., Franklin

www.franklinma.gov/343/

Fields-Playgrounds

18 holes, challenging basket locations on different elevations.

Hodges Village Dam

30 Howarth Rd., Oxford

13 holes, hilly and wooded

Louisa Lake

Dilla St., Milford

9 holes, moderately hilly with a couple of rolling hills.

Maple Hill

132 Marshall St., Leicester

Beginner-friendly and championship-level course.

18 holes with five configurations.

Meadowbrook Orchards

209 Chace Hill Rd., Sterling

978-365-7617

www.meadowbrookorchards.com/discgolf/

Newton Hill

299 Highland St., Worcester

udisc.com/courses/newton-hill-0trn

18 holes, mostly hilly

Pyramids DGC

103 Marshall St., Leicester

508-304-7055.

18 holes, est. 1988

Red Farm Disc Golf

119 Fowler St., Upton

774-431-0860

redfarmgolf.com

9 holes, good for beginners, mixed-use course

Webster Fish and Game Club DGC

91 Gore Rd., Webster

508-943-9806

websterfishandgame.com

18 holes on 17 acres, stroller-friendly

PARKS & TRAILS

Ashland State Park

156 West Union St., Ashland

508-881-4092

Mass.gov/locations/ashland-state-park

Wheelchair accessible, dog-friendly, parking fees (no cash)

Blackstone River and Canal Heritage State Park

287 Oak St., Uxbridge

www.mass.gov/locations/blackstone-river-and-canal-heritage-state-park

Wheelchair accessible, horseback riding, fishing, inline skating, biking, walking.

Brimfield State Forest

86 Dearth Hill Rd., Brimfield

413-245-9966

Mass.gov/locations/brimfield-state-forest

Parking fees, dog-friendly, hiking, walking, horseback riding, fishing.

Broad Meadow Brook Conservation Center and Wildlife Sanctuary

414 Massasoit Rd., Worcester

Largest urban wildlife sanctuary in New England. 400 acres, well-marked trails through woods, fields, streams, and marsh. A Mass Audubon property.

Broadmoor Wildlife Sanctuary

280 Eliot St., Natick

508-655-2296

https://www.massaudubon.org/places-to-explore/wildlife-sanctuaries/broadmoor

A Mass Audubon property. Easy-to-rugged, well-groomed trails weave through the shade of mature woodlands into open fields and along the edges of streams, ponds, marshland, and the Charles River.

Callahan State Park

1048 Edmands Rd., Framingham

508-653-9641

mass.gov/locations/callahan-state-park

Cascades, The

105 Cataract St., Worcester

gwlt.org/the-cascades.html

157 acres, four trails, hiking trails surround waterfalls

Charlton Woods

73 Jones Rd., Charlton

508-434-0049

380 acres of woodland, including a 35-acre pond. Activities include canoeing, kayaking, fishing, hiking, mountain biking, and disc golf. Lodging available.

Dean Pond Recreation Area

86 Dearth Hill Rd., Brimfield

(located in the western portion of Brimfield State Forest off Rte. 20)

413-267-9687

thelastgreenvalley.org/member-directory/brimfield-state-forest-dean-pond-recreation-area

Boating, fishing, swimming, scuba diving, swimming, slash-pads, some fees, 100 feet of beach.



CALL TODAY 508-476-1500



BEN'S CONTAINER & RUBBISH
Delivering affordable and fast dumpster, portable toilet and luxury restroom trailer service throughout the Southern New England Area.



SERVICES INCLUDE:

- 15 Yard Roll-Off Dumpsters
- 20 Yard Roll-Off Dumpsters
- Standard Portable Toilets
- ADA Accessible Portable Toilets
- Luxury Heated and Cooled Restroom Trailers
- Emergency Service Deliveries on Nights & Weekends



14 West Street, Douglas, MA
508-476-1500
www.benscontainerandrubbish.com

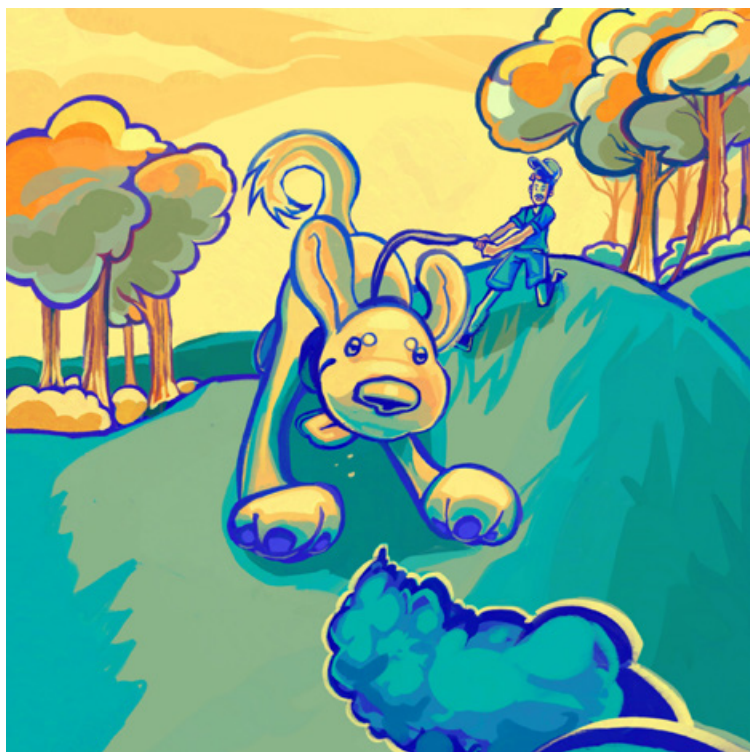


Illustration by Vivian Hill.

Doane's Falls/Tully Lake Trail-head

Athol Rd., Royalston
alltrails.com/trail/us/massachusetts/doanes-falls
About a half-mile out-and-back trail, kid-friendly, hilly, waterfall, river, views.

Douglas State Forest

107 Wallum Lake Rd., Douglas
mass.gov/locations/douglas-state-forest
Parking fees, wheelchair accessible, dog-friendly, swimming, boating, fishing, and more.

F. Gilbert Hills State Forest

45 Mill St., Foxborough
508-543-9084
www.mass.gov/locations/f-gilbert-hills-state-forest

Fruitlands

102 Prospect Hill Rd., Harvard
210 acres, 2.5 miles of walking trails.

Green Hill Park & Farm

Green Hill Parkway, Worcester
508-799-1190
worchesterma.gov/parks/activities/green-hill-park-farm
Largest public park in Worcester with over 480 acres, the farm hosts many animals including alpacas, chickens, llamas, a mini-horse and more. Free.

Hopkinton State Park

164 Cedar St., Hopkinton
www.mass.gov/locations/hopkinton-state-park
1500 acres of forest, two swimming beaches with lifeguards, picnic areas, and more.

Mass Central Rail Trail

Location, visit interactive map at masstrailtracker.com/?trail=mcr
masscentralrailtrail.org
18 Connecting trails on 104 miles of protected land over 26 communities from Boston to Northampton.

Moore State Park*

1 Sawmill Rd., Paxton

mass.gov/locations/moore-state-park

Dog-friendly, historic site, 400 acres that include stone mill foundations, a restored sawmill, and a network of wooded paths. *Due to storm damage cleanup, the DCR closed the entirety of Moore State Park following the May 19 storm. Check the website or social media for updates.

Prospect Park

65 Prospect St., Shrewsbury
508-841-8503
shrewsburyma.gov/413/Parks-Recreation-Facilities
Dog-friendly, historic, offers 2.3+ miles of scenic wooded trails.

Purgatory Chasm State Reservation

198 Purgatory Rd., Sutton
508-234-3733
www.mass.gov/locations/purgatory-chasm-state-reservation
Parking fee. Wheelchair accessible, dog-friendly, follow trails to rock formations.

Quinsigamond State Park

10 N. Lake Ave., Worcester
mass.gov/locations/quinsigamond-state-park
Parking fees, wheelchair accessible, dog-friendly, swimming, sailing, fishing.

Royalston Falls

Route 32, Royalston
thetrustees.org/place/royalston-falls
Follow a descending trail that leads to a deep, ancient gorge carved by prehistoric glacial meltwater to 45-foot falls that plunge into a basin. Strenuous and slippery, use caution. A Trustees of Reservations property.

Rutland State Park

49 Whitehall Rd., Rutland
mass.gov/locations/rutland-state-park
Parking fee, dog-friendly, 300

acres for hiking, biking, canoeing and kayaking, fishing, swimming, horseback riding,, etc.

Sholan Farms

1125 Pleasant St., Leominster
Home of Johnny Appleseed. Walking trails, bird watching, picnic area, view of Boston on a clear day.

Spencer State Forest

51 Howe Rd., Spencer
508-886-6333
Mass.gov/locations/spencer-state-forest
Free parking, dogs must be on leash, historic site, 965 acres for hiking, biking, canoeing and kayaking, fishing, horseback riding. This site includes a portion of the 92-mile Midstate Trail that runs between Massachusetts' borders of RI and NH.

Southern New England Trunkline Trail

107 Wallum Lake Rd., Douglas
mass.gov/locations/southern-new-england-trunkline-trail
Runs 22 miles from Douglas State Forest to Franklin State Forest. Parking fee, dog-friendly, walking, running, hiking, biking, horseback riding.

Upper Charles Trail

Starts at Whitney St. & Mill Stone Dr., Sherborn; ends at 480 Cedar St., Milford (13.9 miles). www.traillink.com/trail/upper-charles-trail/ (Maps here)
Trail links Milford, Holliston, and Sherborn. Features an eight-arch stone bridge and a historic tunnel, trails are well-maintained asphalt and crushed stone.

Wachusett Meadow

113 Goodnow Rd., Princeton
Former farmstead that offers spectacular scenery and supports abundant wildlife throughout woodlands, wetlands, and meadows. Historic buildings and barns still in use, resident sheep graze pastures.

Wachusett Mountain State Reservation

345 Mountain Drive, Princeton
mass.gov/locations/wachusett-mountain-state-reservation
Parking fee, wheelchair accessible, dog-friendly, historic site. 3,000 acres for hiking and biking, plus scenic views from the 2,006-foot peak.

Wells State Park

159 Walker Pond Rd., Sturbridge
Mass.gov/locations/wells-state-park
Parking fee, wheelchair accessible, dog-friendly. 1,400 acres for hiking, biking, horseback riding. Visit nearby Walker Pond's 104 acres for boating and fishing.

Westville Recreation Area

Southbridge/Sturbridge
nae.usace.army.mil/Missions/Recreation/Westville-Lake
The U.S. Army Corps of En-

gineers owns and manages 578 acres of land at Westville Lake. Field, forest, and wetland environments provide habitats for a variety of wildlife species. Frequently observed mammals at the park include otter, beaver, whitetail deer, and red fox. Pets welcome but must be leashed; picnic area, hiking, fishing, and more.

Worcester

bit.ly/WorcesterCityParks
The City of Worcester has approximately 500 acres of public recreation space and about 60 parks throughout.

Resources:

www.mass.gov/locations
www.recreation.gov/camping/campgrounds/249997
thetrustees.org/content/trustees-downloadable-map/

VISIT

Bancroft Tower

Bancroft Tower Rd.
508-799-1190
parkspirit.org/bancroft-tower
Built in 1900, Bancroft Tower offers a unique look at the surrounding lands of Worcester.

Boundless Adventures Tree-top Adventure Park

154 River Rd. W., Berlin
978-293-8696
boundlessadventures.net/mapark
Aerial adventure park, 9 total courses, night climbing too. Minimum age 7 years old, no height minimum, maximum weight 265 pounds.

Cape Cod Baseball League

Find the schedule at www.capecodleague.com/about/schedule.

Davis Farmland

145 Redstone Hill, Sterling
978-422-6666
davisfarmland.com
Adventureland, Imagine Acres, animals, child-size pretend village, play & spray, and more. Note, they are cashless.

EcoTarium

222 Harrington Wy, Worcester
508-929-2700
ecotarium.org

Indian Princess Riverboat Cruises (at Indian Ranch)

200 Gore Rd., Webster
508-943-3871
indianranch.com/cruises
Several cruises available aboard the historic paddlewheel boat.

New England Botanic Garden at Tower Hill

11 French Drive, Boylston
508-869-6111
nebg.org
Offers year-round garden viewing, trail walking, educational programs, and more.

Southwick's Zoo

2 Southwick St., Mendon
800-258-9182
southwickszoo.com

At New England's largest zoo, come face-to-face with lions, giraffes, white rhinos, and more! Explore the African Planes and visit the Rainforest Room. Every trip to Southwick's is an all-day adventure. Hand-feed deer in the 35-acre Deer Forest, ride the Skyfari Sky Ride, hop aboard the Woodland Express Train, or enjoy a whimsical ride on the Carousel. With over 900 animals, thrilling rides, shows, and keeper chats, there's always something new to discover at Southwick's Zoo!

WooSox (Worcester Red Sox)

Polar Park, 100 Madison St., Worcester
508-500-1000
milb.com/worcester
Triple-A Affiliate of the Boston Red Sox.

Worcester Bravehearts

Hanover Insurance Park at Fitton Field
1 College St., Worcester
508-793-2011
worcesterbravehearts.com
Summer collegiate baseball team that plays in the Futures Collegiate Baseball League of New England, family-friendly fun all summer long.

Worcester Smiles

Foley Stadium, 305 Chandler St.
508-753-9002
Facebook @Worcestersmiles
United Women's Soccer franchise based in Worcester.

AMUSEMENT PARKS

Canobie Lake Park

85 N Policy St., Salem, NH
www.canobie.com
Fiesta Shows, various locations, schedule at www.fiestashows.com

Paragon Carousel

205 Nantasket Ave., Hull
www.paragoncarousel.com
Historic carousel was built in 1928.

Seekonk Grand Prix

1098 Fall River Ave., Seekonk
www.seekonkgrandprix.com

Six Flags New England

1623 Main St., Agawam
www.sixflags.com/newengland

Story Land

850 NH16, Glen, NH
www.storylandnh.com

Water Country Water Park

2300 Lafayette Rd., Portsmouth, NH
www.watercountry.com

Water Wizz of Cape Cod

3031 Cranberry Hwy, E. Wareham
www.waterwizz.com

Wicked Waves Waterpark & Cape Cod Inflatable Park

518 Main St., West Yarmouth
www.wickedwavescapecod.com

Outdoor Dining and Drinks

ASHLAND

Oregon Club
117 Oregon Rd.
508-875-9030
theoregonclub.com
New American
Stone's Public House
179 Main St.
508-881-1778
stonespublichouse.com
American, Irish

AUBURN

J. Anthony's Italian Grill
917 Sturbridge St.
508-832-9705
janthonysgrill.com
Italian

BARRE

Cafe on the Common
2 Common St.
978-257-8080
American
Stone Cow Brewery
500 West St.
978-257-8600
stonecowbrewery.com
Brewery and Field to Flame BBQ

BROOKFIELD

Salem Cross Inn
260 West Main St.
508-867-2345
www.salemcrossinn.com/
Fine colonial cuisine

CHARLTON

Quarter Keg Pub
443 Worcester Rd.
508-434-0025
quarterkegpub.com
Pub-style food, drinks
Ronnie's Seafood
208 City Depot Rd.
508-248-5024
ronniesseafood.com
Seafood, American, Ice Cream
Treehouse Brewing
129 Sturbridge Rd.
413-523-2367
treehousebrew.com
Brewery with food trucks

CLINTON

Clintons Bar and Grille
27 High St.
www.clintonsbargrille.com
American

DUDLEY

Firebrands Bar & Grill
8 Airport Rd.
508-949-8881
firebrandsbarandgrill.com
American

EAST BROOKFIELD

308 Lakeside
308 East Main St.
774-449-8333
308lakeside.com
American
Clam Box, The
53 South Maple St.,
E. Brookfield
508-637-1790
brookfieldclambox.com

American, Seafood and Burgers

GRAFTON

John Henry Tavern
42 Magill Dr.
508-839-1945
highfieldgolfcc.com
Post Office Pub
1 Ray St.
508-839-6106
postofficepub.com
American, Pub

HOLDEN

Mexicali Cantina Grill
700 Main St.
508-829-7700
mexicalicantinagrill.com
Mexican
Pholicious Asian Fusion Restaurant & Bar
1062 Main St.
508-210-0605
pholiciousholden.com
Specialty Sandwich Co.
624 Main St.
508-829-5858
Specialtysandwich.com
Pub, Pizza & Sandwiches

Val's Restaurant & Lounge

75 Reservoir St.
508-829-0900
valsrestaurant.com
Greek & Italian
Wong Dynasty
176 Reservoir St.
508-829-2188
wongdynasty-yankeegrill.com
Chinese, Japanese-Sushi, Fusion

HOLLISTON

Anthony's On The Green
212 Prentice St.
508-429-4848
anthonsonthegreen.com
New American
Out Post Farm
216 Prentice St.
508-429-5244
www.outpostfarmma.com

HOPKINTON

ARCOS Cucina + Bar
42 Main St.
508-625-2570
Italian, Spanish
Cornell's Irish Pub
229 Hayden Rowe St.
508-435-6192
cornellsirishpub.net
Irish pub, pizza
Start Line Brewing Company
151R Hayden Rowe St.
508-258-7200
www.startlinebrewing.com/
American

The Spoon

102 1 Lumber Suite
774-803-7125
thespoondiners.com
American

LEICESTER

Castle Cantina Tapas
1230 Main St.
508-859-8089
castlecantina.com

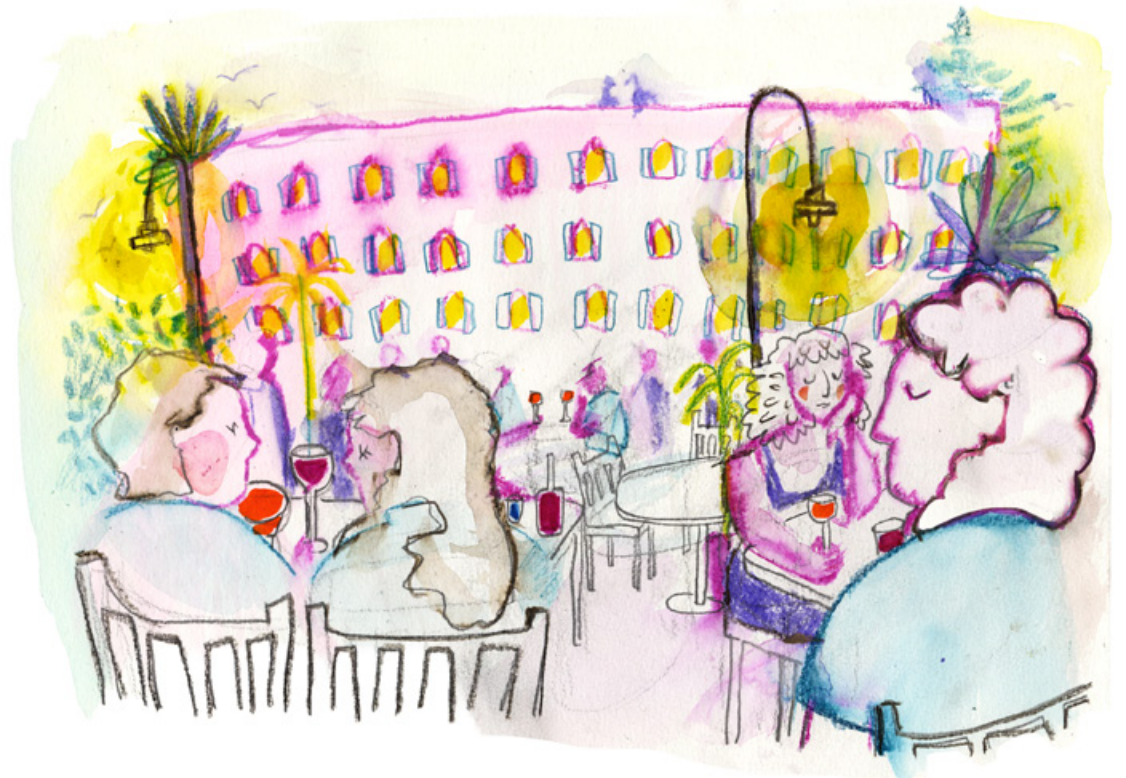


Illustration by Lotte Amie

Spanish Mex Fusion
Hot Dog Annie's
244 Paxton St.
508-892-9059
Facebook/HotDogAnnies
Hot Dog & Burgers

MENDON

Alicante Restaurant & Lounge
84 Uxbridge Rd.
508-634-8188
alicanterestaurant.com
Mediterranean grille and lounge
Galliford's Restaurant & Tavern
5 Southwick St., Southwick's
Zoo
509-928-0928
Gallifords.com
Classic New England fare

MILLBURY

110 Grill
The Shoppes at Blackstone
Valley
70 Worcester-Providence Drive
508-865-8110
110grill.com/millbury-ma
American, see their "allergy
commitment"

A & D Pizzeria & Pub

60 Elm St.
508-865-9013
ADpizzapub.com
Pizza, Pub, Comfort food
Calabria Restaurant
7 South Main St.
508-581-9700
calabriamillbury.com
Italian

MILFORD

Depot Street Tavern
45 Depot St.
508-488-6844
American

Rail Trail Flatbread

223 Main St.
508-381-1431
railtrailflatbread.com
American

Red Heat Tavern

124 Medway Rd.
774-462-5990
redheattavern.com
American coal-fired comfort
food

NORTHBOROUGH

Cellar Bar & Grille, The

369 W. Main St.
508-393-8134
cellarbargrille.com
TKU Kuppanna's
35 Solomon Pond Rd.
508-393-3092
tkukuppanna.com

PRINCETON

The Barn
174 Worcester Rd.
978-464-6136
barnprinceton.com
Seasonally-inspired fare
Mountainside
213 Mountain Rd.
978-464-0300
mountainsideprinceton.com

NORTH GRAFTON

Grafton Grill

10 Bridge St.
508-839-0333
graftongrill.com

SHREWSBURY

Burton's Grill and Bar

193 Boston Turnpike
508-925-7774
Burtonsgill.com
Traditional fare/innovative local
dishes

Chipotle Mexican Grill

97 Boston Turnpike

508-752-1726

chipotle.com
Fast-food Mexican

Lakeside Bar & Grille

97 Boston Turnpike
508-425-3543
Lakesideshrewsbury.com
American

Panera Bread

50 Boston Turnpike
508-798-9949
panera.com

Bakery/cafe

Sawa Hibachi Steakhouse and Sushi

551 Boston Tpk
508-845-5000
sawahibachima.com

Tavern in the Square

193 Boston Turnpike
Lakeway Commons
508-755-5240
taverninthesquare.com

Upscale Bar Fare, draft beers

Terra Brasilis Restaurant

50 Boston Tpk
508-752-0390

www.facebook.com/Terra-brasilisworcester/
Willikers Tex-Mex & BBQ

896 Hartford Turnpike
508-842-3030
Facebook @Willikers-BBQ
Tex-Mex & BBQ

STERLING

Meadowbrook Orchards

209 Chace Hill Rd.
meadowbrookorchards.com

Over Easy Café

220 Redemption Rock Trail
978-422-6686 - outdoor seat-

OUTDOOR DINING

continued on page 27

OUTDOOR DINING

continued from page 26

ing yes, are they in biz?
Facebook/OverEasyCafe
Breakfast and lunch all day

STURBRIDGE

B.T.'s SmokeHouse

392 Main St
508-347-3188
btsmokehouse.com
Barbecue

Cedar Street Grille

12 Cedar St.
508-347-5800
cedarstreetgrille.com
American

The Duck

502 Main St.
508-347-2321
theducksturbridge.com
American, sunken bar

Publick House Historic Inn

277 Main St.
508-347-3313
publickhouse.com

Rapsallion Pub

3 Arnold Rd.
508-347-7500
visitrapscallion.com/sturbridge/

Microbrewery, Bar, Restaurant

Sturbridge Porterhouse

407 Main St.
508-347-2700
sturbridgeporterhouse.square-space.com
Steakhouse

SUTTON

Brickstone Kitchen

4 Worcester-Providence Turnpike
508-865-8650
brickstonekitchen.com
Family-run, brick stone oven pizza

The National Grill

227 Putnam Hill Rd.
508-865-2111
American

UPTON

Red Rock Grill & Bar

66 West Main St.
508-529-0500
redrockgrillandbar.com
American

Rose Garden Restaurant & Pub

16 Milford St.
508-529-7776
rosegardenma.com/home

Rushford & Sons Brewhouse

8 Grove St.
508-603-1380
rasbrewhouse.com
Nanobrewery and taproom with food trucks and pop-ups

UXBRIDGE

Meadowview Tavern

801 Chockalog Rd.
508-278-6110
blissfulmeadows.com

Mendon Street Kitchen

9 Mendon St.
508-278-5750
www.facebook.com/Mendon-streetkitchen/

American

Quaker Tavern

466 Quaker Hwy. Rte 146A
508-779-0901

UxLocale, The

510 Hartford Ave.
508-779-7515

WEBSTER

Point Breeze

144 Point Breeze Rd.
508-943-0404
pointbreezeonwebsterlake.com
American, seafood

Samuel Slaters

200 Gore Rd.
508-943-1639
samuelslaters.com
Indian Ranch's flagship restau-

The Mill 185

185 W Boylston St.
774-261-8585
the-mill-185.com
Italian-American, smokehouse, comfort

WORCESTER

110 Grill

123 Front St.
774-420-2733
110grill.com/worcester-ma
Upscale dining

Addie Lee's Soul Food

596 Main St.
508-752-0569
Soul food

Antonio's Pizza

268 Chandler St.
774-530-6000
antoniospizza.com/worcester

112 Green St.
508-755-0879
www.facebook.com/banner-pub.7/

Bay State Brewing

112 Harding St.
774-420-2233
baystatebrewing.com

Beer Garden

64 Franklin St.
774-530-9000
www.facebook.com/Worcester-BeerGarden/

American, outdoor party games

Belsito's Deli

305 Plantation St.
508-756-3850
Italian

BirchTree Bread Company

138 Green St.
774-243-6944
birchtreebreadcompany.com
Sandwiches, pizza, bakery

Boynton Restaurant & Spirits

117 Highland St.
508-756-5432
boyntonrestaurant.com

BubbleBee Cafe

160 Green St.
508-353-5449
Tea, juice, waffles

Café Reyes

421 Shrewsbury St.
508-762-9900
cafereyes.org

Cuban food with a mission

Che Empanadas

19 Kelley Sq.
781-268-7782
cheempanada.com

Cocktail Garden & Kitchen

64 Franklin St.
508-459-0063
cocktailgardenkitchen.com

Dell'Ovo's Kitchen

257 Shrewsbury St.
508-791-1899
dellovoskitchen.com

Italian

El Buen Sabor Restaurant

59 Chandler St.
508-798-2200

elbuensaborrestaurant.net
Dominican

El Patrón

192 Harding St.
508-757-8000
elpatronworcester.com/
Mexican

Espress Yourself Coffee

2 Richmond Ave. #3
508-755-3300
espress-coffee.edan.io
Coffee

The Fix Burger Bar

108 Grove St.
774-823-3327
thefixburgerbar.com
Burgers, beverages

Funky Murphy's

305 Shrewsbury St.
508-753-2995
funkymurphys.com

American, open-air dining

Gold Star Cupbop

121 Gold Star Blvd.
508-853-5353
goldstarcupbop.com

Greater Good Imperial Brew Co.

55 Millbrook St.
508-926-8736
greatergoodimperials.com
American, craft brewery

Green Island Oyster

90 Harding St.
508-988-8808
greenislandoyster.com
Seafood

Grill on the Hill

1929 Officer Manny Familia Wy., Green Hill Golf Course
508-854-1704
grillonthehillworcester.com
American

Gyro & Souvlaki

623 Chandler St.
508-304-8575
gyronsouvlake.com/contact
Greek

Hacienda Don Juan Restaurant

875 Main St.
508-304-8487
Mexican, Salvadoran

InHouse Coffee

255 Shrewsbury St.
508-363-1212
inhousecoffee.com
Coffee

La Scala Ristorante & Steakhouse

183 Shrewsbury St.
508-753-9912
www.lascalaworcester.com
Italian, fresh never-frozen steaks

Livia's Dish

1394 Main St.
508-926-8861
liviadish.com
American

Mercado Restaurant

278 Shrewsbury St.
508-304-6994
mercado.restaurant

Mercantile, The

2 Mercantile St.
774-389-5180
themercantileworcester.com
New American tavern cuisine, two-floor rooftop deck

Mezcal Tequila Cantina

30 Major Taylor Blvd.
508-926-8308
Mezcalcantina.com
Mexican, kitchen is 100% GF

Meza Estiatorio

166 Shrewsbury St.
508-556-4242
mezeestiatorio.com
Greek

Nancy Chang

372 Chandler St.
508-752-8899
nancychang.com
Asian (vegan, GF, diabetic-friendly)

NU Kitchen

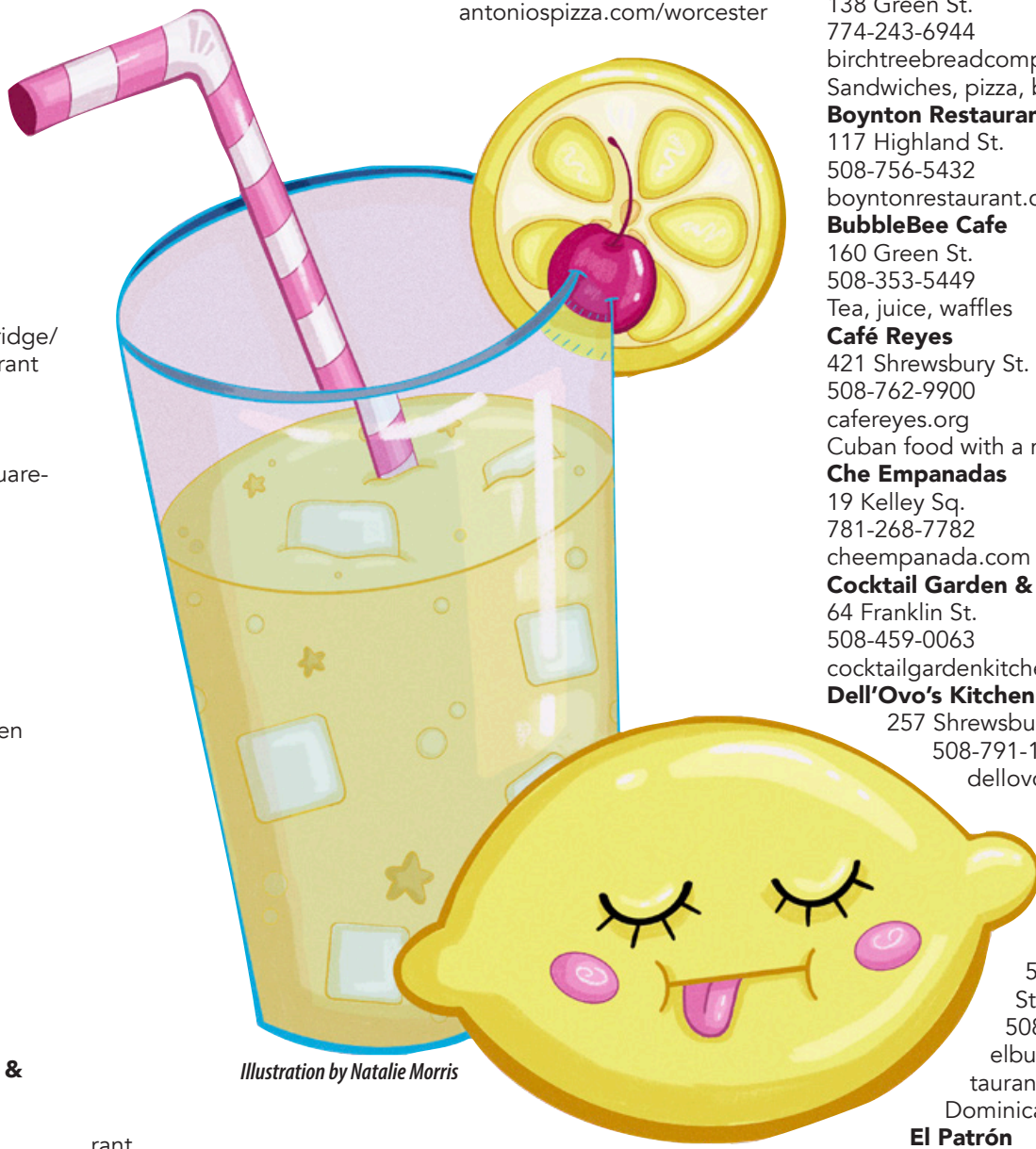


Illustration by Natalie Morris

rant

Waterfront Mary's

103 Birch Island Rd.
508-943-2222
waterfrontmarys22.com
Seafood & Bar, free docking

WEST BOYLSTON

Draught House Bar & Grill

42 West Boylston St.
508-835-4722
thedraughthouse.com
Pub

NOLA Cajun Kitchen

340 West Boylston St.
774-261-8008
www.facebook.com/nolacajunkitchenma/
Cajun/Creole, Seafood

Pizza

Armsby Abbey

144 Main St.
508-795-1012
armsbyabbey.com
Seasonal farmhouse fare, craft beer

Altea's Eatery

259 Park Ave.
508-767-1639
alteaseatery.com

Bahnan's Bakery

344 Pleasant St.
508-796-5365
bahnans.com

Banner Bar & Grill

OUTDOOR DINING

continued on page 31

Sounds of Summer

This is information available at press time; it is not meant to be an exhaustive list. Check websites for additional and updated information.

Indian Ranch

200 Gore Road, Webster
508-943-3871
indianranch.com
JUNE 7: 1 p.m.
Little Feat
JUNE 12: 7 p.m.
Brothers Osborne
JUNE 13: 1 p.m.
Lotus Land, Tribute to Rush
JUNE 19: 7 p.m.
Get the Led Out, Tribute to Led Zeppelin
JUNE 21: 1 p.m.
Tracy Lawrence
JUNE 27: 1 p.m.
Three Dog Night
JUNE 28: 1 p.m.
Voyage - Tribute to Journey
JULY 12: 1 p.m.
Rumours - Tribute to Fleetwood Mac
JULY 16: 7 p.m.
Yachtley Crew
JULY 17: 7 p.m.
Aaron Lewis & The Stateliners
JULY 26: 1 p.m.
Kip Moore
JULY 30: 7 p.m.
The Concert -Tribute to ABBA
AUG. 14: 7 p.m.
Face 2 Face - Tribute to Elton John and Billy Joel
AUG. 15: 1 p.m.
The Marshall Tucker Band
AUG. 22: TBA
The Mavericks & Friends - Honoring The Mavericks

AUG. 23: 1 p.m.
Pure Prairie League
AUG. 29: TBA.
Melissa Etheridge
AUG. 30: 1 p.m.
Chris Janson

Xfinity Center

885 S Main St., Mansfield
508-339-2331
livenation.com
Kid Cudi Presents: The Rebel Ragers Tour
JUNE 6: 7 p.m.
Kid Rock
JUNE 12: 7:30 p.m.
Dave Matthews Band
JUNE 19: 6:30 p.m.
Southern Hospitality Tour: The Black Crowes & Whisky Myers
JUNE 20: 7:30 p.m.
Jack Johnson
JUNE 21: 7 p.m.
Evanescence World Tour with Spiritbox & Nova Twins
JUNE 24: 6:30 p.m.
Sammy Hagar
JUNE 26: 7 p.m.
Hardy
JUNE 29: 7 p.m.
Santana & The Doobie Brothers
JULY 2: 7 p.m.
GODSMACK
JULY 11: TBD
Pussycat Dolls, Lil' Kim & Mya
JULY 18: 7 p.m.
Muse
JULY 21: 8 p.m.

NE-YO & AKON
JULY 24: 8 p.m.
John Mellencamp
JULY 25: 6:45 p.m.
Train, Barenaked Ladies, Matt Nathanson
JULY 26: 7 p.m.
Chicago & Styx
JULY 30: 6:45 p.m.
Five Finger Death Punch, Cody Jinks, Eva Under Fire
AUG. 1: 6:30 p.m.
Motley Crue & Tesla
AUG. 8: 7 p.m.
Hilary Duff, La Roux, Jade LeMac
AUG.12: 6 p.m.
Averged Sevenfold & Good Charlotte
AUG. 13: 6:15 p.m.
Deep Purple
AUG. 21: 7 p.m.
Kesha
AUG. 22: 6:30 p.m.
Lynyrd Skynyrd & Foreigner
AUG. 27: 6:30 p.m.
Rob Zombie & Marilyn Manson
AUG. 28: 7 p.m.
Empire of the Sun
AUG. 29: 8 p.m.
Pitbull & Lil Jon
AUG. 30: 7:30 p.m.
TLC, Salt-N-Pepa & En Vogue
SEPT. 8: 6:30 p.m.
Suicideboy\$ & Destroy Lonely
SEPT. 10: 7:20 p.m.
BABYMETAL, Halestrom, Violent Vira

Tanglewood

297 West St., Lenox
888-266-1200
bso.org/tanglewood for official schedule
JUNE 20: 7 p.m.
John Stewart
JUNE 21: 2:30 p.m.
Yacht Rock Review
JUNE 26: 7 p.m.
Jazz at Lincoln Center Orchestra with Wynton Marsalis
JUNE 27: 7:30 p.m. & JUNE 28: 6 p.m.
Paul Simon
JUNE 30: 7 p.m.
Jerry Garcia Symphonic Celebration with the Boston Pops
JULY 2: 8 p.m.
American Titans: Bernstein and Sondheim
JULY 3 & 4: 8 p.m.
James Taylor and his All-Star Band
JULY 5: 10:30 a.m.
TLI for Families: Music Moves, Stories Groove
JULY 5: 2:30 p.m.
Philip Glass Symphony No. 15, Lincoln
JULY 5: 7 p.m.
TMC Vocal Concert: Music of Ives
JULY 6: 8 p.m.
TMC Orchestra performs Beethoven Symphony No. 6, Pastoral
JULY 7: 2:30 p.m.
Tanglewood Music Center opening exercises
JULY 8: 8 p.m.
Tanglewood Recital Series: Boston Symphony Chamber Players
JULY 9: 8 p.m.
Tanglewood Recital Series: Augustin Hadelich and Seong-Jin Cho
JULY 10: 6 p.m.
Prelude Concert: BSO Musicians
JULY 10: 8 p.m.
Tchaikovsky Piano Concerto No. 1 with Seong-Jin Cho and Excerpts from Swan Lake
JULY 11: 10:30 a.m.
Brahms Symphony No. 2 and Chopin Piano Concerto No. 2 with Eric Lu
JULY 11: 6 p.m.
Prelude Concert: TMC Chamber Music
JULY 11: 8 p.m.
Mahler Symphony No. 4 and Mozart Piano Concerto No. 25 with Emanuel Ax
JULY 12: 2:30 p.m.
Brahms Symphony No. 2 and Chopin Piano Concerto No. 2 with Eric Lu
JULY 12: 7 p.m.
TMC Vocal Concert
JULY 13: 8 p.m.
TMC Orchestra performs Beethoven Symphony No. 5

JULY 14: 7 p.m.
Ziggy Marley and Trombone Shorty & Orleans Avenue
JULY 15: 8 p.m.
Tanglewood Recital Series: Les Arts Florissants
JULY 16: 8 p.m.
Tanglewood Recital Series: The Boston Camerata
JULY 17: 4 p.m.
TLI 101: Classical
JULY 17: 6 p.m.
Prelude Concert: BSO Musicians
JULY 17: 8 p.m.
Simon, Barber, and Selections from Nixon in China with Renee Felming and Thomas Hampson
JULY 18: 10:30 a.m.
Open Rehearsal: Beethoven and Shostakovich Piano Concerto No. 1 with Daniil Trifonov
JULY 18: 1:30 p.m.
BU Tanglewood Institute Young Artists Orchestra
JULY 18: 5 p.m.
TLI Spotlight Series: Christian McBride with Catherine Burns
JULY 18: 6 p.m.
Prelude Concert: TMC Chamber Music
JULY 18: 8 p.m.
Hisaishi conducts Hisaishi and Ravel with Jean-Yves Thibaudet
JULY 19: 10 a.m.
TMC Chamber Music
JULY 19: 10:30 a.m.
Tanglewood Family Concert
JULY 19: 10:30 a.m. .
Tanglewood Family Concert
JULY 19: 1:30 p.m.
BU Tanglewood Institute Young Artists Wind Ensemble
JULY 19: 2:30 p.m.
Haydn, Beethoven, and Shostakovich Piano Concerto No. 1 with Daniil Trifonov
JULY 20: 8 p.m.
TMC Orchestra performs Strauss
JULY 21: 7 p.m.
'Weird Al' Yankovic
JULY 22: 8 p.m.
Tanglewood Concert Series: Glass' Complete Etudes for Piano
JULY 23: 8 p.m.
Festival of Contemporary Music: Those We Have Lost Too Soon
JULY 24: 2:30 p.m.
Festival of Contemporary Music/Meta Music: Music About Other Music
JULY 24: 4 p.m.
TLI 101: Jazz
JULY 24: 6 p.m.
Prelude Concert: BSO Musicians
JULY 24: 8 p.m.
Tchaikovsky Symphony No. 3, Polish and Mozart Violin Concerto No. 5 with Augustin Hadelich

TOPOGRAPH

Affordable Housing Opportunity

1 Ridge Rd., Auburn, MA 01501

Brand New Construction of one-, two-, and three-bedroom apartments featuring modern appliances, washer and dryer in unit, and walk-in closets.

Program description:

- Resident income for affordable units are restricted to 80% of the area median income.
- Non-Smoking community

# of Units	# of bedrooms	Rent*	Maximum Income Limit (% AMI)	Minimum Income Requirement**
31	1 BR	\$1613	80%	\$48,000
43	2 BR	\$1734	80%	\$51,600
8	3 BR	\$1852	80%	\$55,400

*Rent may be adjusted based on annual income limits provided by HUD.
**Minimum Income Requirement does not apply to households receiving housing assistance such as Section 8 or MRVP.

Eligibility Requirements:

- Must meet all income and background eligibility requirements under the Tenant Selection Plan approved by EOHLIC.

Maximum Income per Household Size
(2025 limits, provided by Worcester MA, HUD Metro Area)

1 person	2 people	3 people	4 people	5 people	6 people
\$69,850	\$79,800	\$89,800	\$99,750	\$107,750	\$115,750





If interested, please contact our office at
774-220-6334 or at
topograph@wingatecompanies.com

CONCERTS*continued from page 28*

JULY 25: 10:30 a.m.
Open Rehearsal: Tchaikovsky Symphony No. 5 and Mozart Violin Concerto No. 1 with Himari
JULY 25: 6 p.m.
Festival of Contemporary Music: The Next Generation
JULY 25: 8 p.m.
Tchaikovsky Symphony No. 4 and Paul Lewis Plays Mozart Piano Concerto No. 27
JULY 26: 10 a.m.
Festival of Contemporary Music I Gen Z paired with Iconic Works
JULY 26: 2:30 p.m.
Tchaikovsky Symphony No. 5 and Mozart Violin Concerto No. 1 with Himari
JULY 26: 7 p.m.
TLI Jazz: 100 Years of Miles and Coltrane featuring the Ted Rosenthal Quintet
JULY 27: 8 p.m.
Festival of Contemporary Music I Nordic Boomers
JULY 28: 7 p.m.
Jason Isbell and the 400 Unit with special guest Patty Griffin
JULY 29: 1:30 p.m.
TLI Open Workshops: Andris Nelsons, conductor
JULY 30: 8 p.m.
Tanglewood Recital Series: Danish String Quartet
JULY 31: 4:30 p.m.
TLI 101: Opera
JULY 31: 6 p.m.
Prelude Concert: BSO Musicians
JULY 31: 8 p.m.
Esa-Pekka Salonen conducts Wagner, Sibelius, and Beethoven with Yefim Bronfman
AUG. 1: 10:30 a.m.
Open Rehearsal: Joshua Bell performs Bruch Scottish Fantasy
AUG. 1: 1:30 p.m.
BU Tanglewood Institute Young Artists Orchestra
AUG. 1: 2 p.m.
TLI Presents: February 1933
AUG. 6 p.m.
Prelude Concert: TMC Chamber Music
AUG. 1: 8 p.m.
The Marriage of Figaro
AUG. 2: 1:30 p.m.
BU Tanglewood Institute Young Artists Wind Ensemble
AUG. 2: 2:30 p.m.
Joshua Bell performs Bruch Scottish Fantasy
AUG. 3: 8 p.m.
TMC Orchestra: Esa-Pekka Salonen conducts Ravel, Debussy, and Bartók
AUG 4: 2 p.m.
Tanglewood on Parade: Making Music in Community
AUG 4: 8 p.m.
Tanglewood on Parade: Making Music in Community, curated by Yo-Yo Ma
AUG. 5: 6 p.m.
TLI Presents: A Perspective

from the Humanities
AUG. 6: 8 p.m.
Tanglewood Recital Series: The Cellists of the Boston Symphony Orchestra, curated by Yo-Yo Ma
AUG. 7: 6 p.m.
Prelude Concert: BSO Musicians
AUG. 7: 8 p.m.
Yo-Yo Ma and Renaud Capuçon perform Brahms and Fauré Gratitude and Friendship
AUG. 8: 10:30 a.m.
Open Rehearsal: Yo-Yo Ma, Arooj Aftab, Karen Ouzounian, and Christine Lee perform Tavener, Kalhor, and Golijov, curated by Yo-Yo Ma
AUG. 8: 1:30 p.m.
BU Tanglewood Institute Young Artists Chorus
AUG. 8: 2 p.m.
TLI Presents: Marcos Balter Pan with Claire Chase
AUG. 8: 6 p.m.
Prelude Concert: TMC Chamber Music
AUG. 8: 8 p.m.
An American Journey with Yo-Yo Ma and Friends
Curated by Yo-Yo Ma
AUG. 9: 10 a.m.
TMC Chamber Music
AUG. 9: 10:30 a.m.
TLI for Families: A Whale of a Tale
AUG. 9: 2:30 p.m.
Yo-Yo Ma, Arooj Aftab, Karen Ouzounian, and Christine Lee perform Tavener, Kalhor, and Golijov
AUG. 9: 7 p.m.
TLI Presents: TMC Silent Film Project
AUG. 10: 1:30 p.m.
TMC Music for Solo Piano
AUG. 10: 8 p.m.
TMC Orchestra: An Evening of American Opera
AUG. 11: 7 p.m.
Hugh Jackman with the Boston Pops
AUG. 12: 8 p.m.
TLI Presents: Adam Tendler — Inheritances
AUG. 13: 4 p.m.
TLI The Art of Conducting: Marin Alsop, conductor
AUG. 13: 5 p.m.
John Luther Adams: Crossing Open Ground
Directed by Christopher Rountree and Dimitri Chamblas
AUG. 13: 8 p.m.
Tanglewood Recital Series: Laurie Anderson Amelia
AUG. 14: 6 p.m.
Prelude Concert
AUG. 14: 8 p.m.
Copland Appalachian Spring, Beethoven Symphony No. 7, and Rountree For Martha (Variations on a Theme of Leonard Bernstein) Featuring Martha Graham Dance Company
AUG. 15: 1:30 p.m.
BU Tanglewood Institute Young Artists Orchestra
AUG. 15: 2 p.m.

TLI Spotlight Series: Laurie Anderson with Peter Sellars
AUG. 15: 6 p.m.
Prelude Concert: TMC Vocal Fellows
AUG. 15: 8 p.m.
Maestro of the Movies: A Tribute to John Williams (film night)
AUG. 16: 10 a.m.
TMC Chamber Music
AUG. 16: 2:30 p.m.
Tanglewood Music Center Orchestra with Marin Alsop, conductor, and Ray Chen, violin
AUG: 16: 7 p.m.
TLI Presents: Laurie Anderson, The Republic of Love with Sexmob and Special Guests Mazz Swift and Christina Courtin
AUG. 18: 7 p.m.
Brandi Carlile with special guest Jensen McRae
AUG. 19: 8 p.m.
Tanglewood Recital Series: Yuja Wang
AUG. 20: 8 p.m.
Tanglewood Recital Series: Sanctuary: The Power of Resonance and Ritual
Silkroad Ensemble with Rhianon Giddens
AUG. 21: 6 p.m.
Prelude Concert: BSO Musicians
AUG. 21: 8 p.m.
Cynthia Erivo with the Boston Pops
AUG. 22: 10:30 a.m.
Open Rehearsal: Beethoven Symphony No. 9, Ode to Joy
AUG. 22: 6 p.m.
Prelude Concert: Tanglewood Festival Chorus
AUG. 22: 8 p.m.
Dvořák Symphony No. 8 and Bernstein Chichester Psalms
AUG. 23: 2:30 p.m.
Beethoven Symphony No. 9, Ode to Joy
AUG. 29: 7 p.m.
Carrie Underwood
AUG. 30: 2:30 p.m.
Judy Collins - Sweet Judy Blue Eyes: Farewell Tour co-starring Mary Chapin Carpenter and Rosanne Cash & very special guest Amanda Shires
SEPT. 2: 7 p.m.
Tedeschi Trucks Band with special guest Lukas Nelson
SEPT. 5: 7 p.m.
Alabama Shakes with very special guest Mavis Staples
SEPT. 6: 6 p.m.
John Fogerty & Steve Winwood

The Palladium
261 Main St., Worcester
508-797-9696
thepalladium.net

JUNE 5: 9 p.m.
Blade Rave
JUNE 6: 7 p.m.
Amberlin with Emery and Watashi WA
JUNE 12: 7 p.m.
Spite
JUNE 13: 7:30 p.m.

Coheed and Cambria
JUNE 16: 7 p.m.
I Set My Friends on Fire
JUNE 18: 7 p.m.
Worm
JUNE 19: 9 p.m.
Midget Mayhem Tour
JUNE 22: 8 p.m.
PUP: 2026
JUNE 24: 7:30 p.m.
Kittie with special guests Kingdom of Giants and Gore
JUNE 27: 5:15 p.m.
K-POP Superstars
JULY 5: 4:45 p.m.
Hatebreed
JULY 11: 3 p.m.
Seven Hills Music Festival feat. Four Year Strong
JULY 12: 6:30 p.m.
Six Feet Under & Kataklysm
JULY 18: 8 p.m.
Shordie Shordie
JULY 25: 6:30 p.m.
Scarecrow Hill Release Party
AUG. 2: 7 p.m.
The Word Alive
AUG. 8: 7 p.m.
Dimmu Borgir
AUG. 14: 7 pm.
Savage Hands & Of Virtue
AUG. 21: 4 p.m.
Breakaway Mass 2026
AUG. 28: 7:30 p.m.
Anthony Green
SEPT. 2: 7:30 p.m.
Sincere Engineer

Leader Bank Pavilion

290 Northern Ave., Boston
617-728-1600
www.leaderbank.com/about/leader-bank-pavilion

JUNE 4: 8 p.m.
Triumph
JUNE 6: 8 p.m.
Triumph
June 9: 8 P.M.
Yungblod
JUNE 10: 7:30 p.m.

Claypool Gold
JUNE 17: 7 p.m.
Yellowcard
JUNE 20: 6:30 p.m.
Young the Giant with Cold War Kids
JUNE 30 - JULY 1
An Evening with Goose (2-day pass)
JULY 2: 7:30 p.m.
Kes
JULY 9: 7 p.m.
Buju Banton & Stephen Marley
JULY 10: 7:30 p.m.
Sarah McLachlan
JULY 15: 8 p.m.
Lindsey Stirling
JULY 16: 7 P.M.
Bob Dylan
JULY 17: 7:30 p.m.
The Guess Who
JULY 18: 7 p.m.
Darius Rucker
JULY 21: 6:45 p.m.
Toto, Christopher Cross, The Romantics
JULY 31: 7:30 P.M.
Tori Amos
AUG. 1: 7 p.m.
Tape B X Levity
AUG. 8: 8 p.m.
Margaritaville Presents Jimmy Buffett's Coral Reefer Band
AUG. 14: 6 p.m.
Gin Blossoms, Blues Traveler with Spin Doctors
AUG. 15: 7 p.m.
The Fray with Dashboard Confessional
AUG. 19: 6:45 p.m.
Koe Wetzel
AUG. 21-22
Cann Presents: Yacht Rock Revue (2-day pass)
AUG. 24: 7:30 p.m.
Myles Smith

CONCERTS*continued on page 30*

GRAFTON, MA.
Tender Touch
LANDSCAPE, DESIGN,
CONSTRUCTION & IRRIGATION

- Irrigation & Lighting
- Backhoe and Excavator Services
- Weekly Mowing
- Walls & Walkways

508-839-7354
508-769-3273 cell
JAMEY YAYLAIAN

CONCERTS

continued from page 29

Cape Cod Melody Tent
41 West Main St., Hyannis
508-775-5630
melodytent.org

JUNE 6: 8 p.m.
Little Feat

JUNE 9: 7 p.m.
Happy Together Tour with The Association, The Troggs, Jason Scheff, Gary Puckett, The Fortunes, Ron Dante, The Vogues, Cowsills
JUNE 12: 8 p.m.
Cooper Alan with Timmy McKeever
JUNE 13: 6:30 p.m.
Moe. And Umphrey's McGee

JUNE 18: 6:30 p.m.
Joe Russo's Almost Dead
JUNE 19: 8 p.m.
Maddox Batson
JUNE 20: 8 p.m.
Changes in Latitudes, a Jimmy Buffet Tribute Show
JUNE 25: 7:30 p.m.
Rolling Together Revue Tour: G. Love & Special Sauce, Donavon Frankenreiter and Moon Taxi
JUNE 26: 8 p.m.
Voyage, Celebrating the Music of Journey
JUNE 27: 8 p.m.
Chelsea Handler
JULY 5: 8 p.m.
The Boss Project, the Premier Bruce Springsteen Tribute
JULY 9: 8 p.m.
Rumours, the Ultimate Fleetwood Mac Tribute Show
JULY 10: 8 p.m.
Little River Band
JULY 12: 7 p.m.
Disco Biscuits
JULY 15: 7 p.m.
Judy Collins & Richard Thompson with Zara Phillips with special guest Elles Bailey
JULY 16: 8 p.m.
Hanson
JULY 17: 8 p.m.
Yachtley Crew
JULY 18: 8 p.m.
Pop2000 Tour featuring Chris Kirkpatrick of *NSYNC, O-Town, BBMak, Ryan Cabrera and LFO

JULY 19: 8 p.m.
Yachtley Crew
JULY 23: 7:30 p.m.
Lyle Lovett and His Small Large Band
JULY 24: 7:30 p.m.
John Mulaney
JULY 25: 5 p.m.
John Mulaney
JULY 26: 7:30 p.m.
Fab Four, the Ultimate Tribute
JULY 28: 7:30 p.m.
Alison Krauss & Union Station featuring Jerry Douglas
JULY 30: 8 p.m.
Everclear
JULY 31: 6:45 p.m.
JJ Grey & Mofro and the Wood Brothers
AUG. 1: 8 p.m.
A Tribute to ABBA
AUG. 2: 8 p.m.
A Tribute to ABBA
AUG. 3: 8 p.m.
Joe Bonamassa
AUG. 6: 6:45 p.m.
String Cheese Incident
AUG. 7: 8 p.m.
Dirty Deeds, the AC/DC Experience
AUG. 8: 8 p.m.
Three Dog Night
AUG. 9: 7:30 p.m.
Lake Street Dive with Maggie Rose
AUG. 13: 8 p.m.
The Wallflowers
AUG. 14: 7:30 p.m.

KC and the Sunshine Band
AUG. 15: 5 p.m.
Comedian Bob Marley
AUG. 15: 8 p.m.
Comedian Bob Marley
AUG. 16: 8 p.m.
Face 2 Face, a Tribute to Elton John & Billy Joel
AUG. 19: 8 p.m.
Russell Dickerson
AUG. 20: 8 p.m.
Ripe
AUG. 22: 7 p.m.
Atlanta Rhythm Section, Pure Prairie League, Firefall, Orleans
AUG. 23: 5 p.m.
Comedian Jim Gaffigan
AUG. 23: 8:45 p.m.
Comedian Jim Gaffigan
AUG. 26: 8 P.M.
Collective Soul
AUG. 28: 8 p.m.
Let's Sing Taylor, an Unofficial Live Tribute Show
AUG. 29: 8 p.m.
Jake Owen with special guest Anna Vaus
AUG. 30: 8 p.m.
Get the Led Out
SEPT. 4: 8 p.m.
Lukas Nelson & Molly Tuttle
SEPT. 5: 8 p.m.
45 Years of Violent Femmes
SEPT. 6: 7:30 p.m.
Women Rock! The Tent

**Now Serving
Breakfast and Brunch!**



**REVIVAL
122**


**\$5 off
Breakfast or Brunch
with this coupon**

**1227 Providence Road,
Northbridge, MA • 508-372-9030**

**Breakfast Hours: M-F | 8am - 11am
Brunch Hours: Sat. & Sun. | 9am - 2pm**

From CONCEPT to COMPLETION, we bring your vision to life.

**Graphic Design
Sports Banners
Brochures
Postcards
Direct Mail Solutions
Every Door Direct Mail
Books
Lawn Signs
Calendars
Posters
Swag
and so much more!**

ANDREW CARINI
Print and Mail Specialist
How can I help you?
508-254-2241

**Our Town
PUBLISHING**
Home of localtownpages.com



ourtownpublishing.com

OUTDOOR DINING

continued from page 27

335 Chandler St.
508-926-8800
nucafe.com
Organic Cafe

Nuovo
92 Shrewsbury St.
508-796-5915
nuovoworcester.com

Oak Barrel Tavern
229 Grove St.
508-755-8047
www.obtavern.com

American, comfort food
Off The Rails Worcester
90 Commercial St.
508-304-6411
offtherailsworcester.com

Panera Bread
120 Gold Star Blvd.
508-756-7007
panerabread.com

Patsie Dugan's
49 Millbury St.
508-755-4155
American

Pepe's
179 Shrewsbury St.
508-755-1978
pepesbrickovenpizza.com
Italian, pizza

Pepe's Taqueria
645 Chandler St.
508-796-5796
pepestaqueriaworcester.com

Mexican
Peppercorn's Grille & Tavern
455 Park Ave.
508-752-7711

epeppercorns.com
Piccolo's
157 Shrewsbury St.
508-754-1057

piccolos157.com
Italian
Quinn's Irish Pub
715 W. Boylston St.
508-459-2025

quinnisirishpub.com
Ralph's Rock Diner
148 Grove St.
508-753-9543

ralphsrockdiner.com
Diner, bar, music venue
Ruth's Chris Steak House
4 Mercantile St.
508-492-0525

Sham Restaurant
50 Water St.
508-373-2022
shamrestaurants.com

Skyline Bistro
1 Skyline Dr.
508-799-1964

The Sole Proprietor
118 Highland St.
508-798-3474
thesole.com

Sonoma Bistro
363 Plantation St.
at the Beechwood Hotel
508-754-5789
sonomaatthebeechwood.com

Global cuisine
Sushi Miyazawa
372 Chandler St.
774-420-2900

sushimiyasawa.com
Japanese
TapaVino
160 Green St.
tapavinowpm.com

VIA Italian Table
89 Shrewsbury St.
508-754-4842
viaitaliantable.com

Italian with modern twist
Vintage Grille and Gourmet Pizza
346 Shrewsbury St.
508-752-0558

vintagegrilleandbar.com
Volturno
72 Shrewsbury St.
508-756-8658

volturnopizza.com
Neapolitan pizza, etc.
Westside Steak & BBQ
2 Richmond Ave.
508-756-6328

westsidesteakbbq.com
BBQ, local beer
Wicked Wing Co.
321 West Boylston Street
774-243-7336

www.facebook.com/wicked-wingco/
Pub, wings
The Wonder Bar
121 Shrewsbury St.
508-752-9909

wonderbarpizza.com
Pizza, est. 1922
Woo Bar & Grill, The
358 Shrewsbury St.
774-243-6231

thewoobar.com
American
Wooden Bar
4 Knowlton Ave.
508-556-0535

woodenbar.blog

Wormtown Brewery
72 Shrewsbury St.
774-239-1555
wormtownbrewery.com

Brewery & taproom
Vincent's
49 Suffolk St.
508-752-9439

www.instagram.com/vincent_s_worcester/
Lounge

Stock Up For Summer Reads
All kinds of books for the beach or backyard!

25% OFF
Any New or Used Book
(Exp. 7/31/2026, with this ad, limit 1 per person, in-stock only)

Booklovers' Gourmet
Books • Coffee • Gifts
72 East Main St., Webster
508-949-6232
Hours: Tues.-Sat. 10-5, Wed. 10-6 • www.bookloversgourmet.com
Shop online: bookshop.org/shop/bookloversgourmet

It's Deck Time!

NOW STOCKING
Hardware
Lawn and
Garden Supplies

C&S LUMBER

Family Owned and Operated Since 1952

- **PROFESSIONAL SERVICE**
- **FREE DELIVERY • ESTIMATING**

Count on us for all your building material needs

Mon.-Fri. 7:30 a.m. - 5 p.m.
Sat. 7:30 a.m. - Noon
cslumberco.com

124 Main Street,
Millbury, MA
(508) 865-4822



INDIAN RANCH

2026 SUMMER CONCERT SERIES

LIVE MUSIC BY THE LAKE • 200 GORE ROAD, WEBSTER, MA

FOR COMPLETE SCHEDULE AND TICKETS, VISIT WWW.INDIANRANCH.COM

Little Feat
THE LAST FAREWELL TOUR
JUNE 7 • 1PM

Brothers Osborne
WITH SPECIAL GUEST
CASSIDY DANIELS
JUNE 12 • 7PM

LOTUS LAND
American RUSH Tribute
JUNE 13 • 1PM

GET THE LED OUT
A CELEBRATION OF "THE MIGHTY ZEP"
JUNE 19 • 7PM
AUGUST 28 • 7PM

THE PIKE ROKfest 2026
EXPERIENCE QUEEN
A TRIBUTE TO THE MUSIC OF QUEEN
BEAUTIFUL LOSERS TRIBUTE TO BOB SEGER
HEARTLESS HEART TRIBUTE
WHAMMER JAMMER TRIBUTE TO THE J. GEILS BAND
ALL SQUIER ALL SINNERS PERFORMS BILLY SQUIER
JUNE 20 • 12PM

TRACY LAWRENCE
JUNE 21 • 1PM

VOYAGE
CELEBRATING THE MUSIC OF JOURNAY
JUNE 18 • 1PM

THREE DOG NIGHT
WITH SPECIAL GUEST
Chris Friggeri
JULY 11 • 1PM

RUMOURS
THE ULTIMATE FLEETWOOD MAC
JULY 12 • 1PM

THE WORLD'S #1 YACHT ROCK BAND
Yacht Rock Crew
JULY 16 • 7PM

AARON LEWIS
AND THE STATELINERS
JULY 17 • 7PM

CHRIS 'WEDGIE'
OTOWN
BBMAK LFO
JULY 19 • 1PM

DIRTY DEEDS
THE AC/DC EXPERIENCE
JULY 25 • 1PM

KIP MOORE
JULY 26 • 1PM

THE CONCERT
A TRIBUTE TO ABBA
JULY 30 • 7PM

THE PIKE GRUNGE Fest 2026
SCHISM (TOOL TRIBUTE)
ROTTEN APPLE (ALICE IN CHAINS TRIBUTE)
LOUNGE FLY (STONE TEMPLE PILOTS TRIBUTE)
DROWN (SMASHING PUMPKINS TRIBUTE)
AUGUST 1 • 12PM

FACE 2 FACE
TRIBUTE TO ELTON JOHN & BILLY JOEL
AUGUST 14 • 7PM

THE MARSHALL TUCKER BAND
WHILE I'M YOUNG TOUR 2026
AUGUST 15 • 1PM

THE MAVERICKS
THE MUSIC LIVES ON
AUGUST 22 • 1PM

Pure Prairie League
AUGUST 23 • 1PM

MELISSA ETHERIDGE
THE RISE TOUR
AUGUST 29 • 7:30PM

CHRIS JANSON
Wild Horses
AUGUST 30 • 1PM

THE PIKE Hairfest 2026
OZZMOSIS
(OZZY OSBOURNE TRIBUTE)
VAN HALEN (VAN HALEN TRIBUTE) SHOT OF POISON (POISON TRIBUTE)
CRUCIFIED (MOTLEY CRUE TRIBUTE) THE PRIEST (LUDAS PRIEST TRIBUTE)
SEPTEMBER 6 • 12PM

9TH LOCAL COUNTRY FEST 2026
SEPTEMBER 13 • 12PM

30th ANNIVERSARY
SPECIAL 30 YEAR LEGACY
OCTOBER 3 • 1PM

Lake Tours and Specialty Cruises

INDIAN PRINCESS

PRESENTED BY **websterfive**

FOR FULL CRUISE SCHEDULE AND TICKETS VISIT WWW.INDIANRANCH.COM/CRUISES
200 GORE ROAD, WEBSTER, MA

INDIAN PRINCESS LAKE TOUR		
JUNE 27	JULY 19	AUGUST 15
JUNE 28	JULY 25	AUGUST 22
JULY 11	JULY 26	AUGUST 23
JULY 12	JULY 30	AUGUST 29
JULY 16	AUGUST 1	AUGUST 30
JULY 17	AUGUST 14	

100 FM THE PIKE 90s CRUISE
HOSTED BY CHUCK PERKS
AUGUST 15

SAMUEL SLATER'S Lakeside Dining
RESTAURANT

FOR MENUS, RESERVATIONS, AND MORE INFORMATION, VISIT WWW.SAMUELSLATERS.COM
200 GORE ROAD, WEBSTER, MA

Tickets are also available by phone: 1-800-514-ETIX (3849). All events are rain or shine. No refunds. For ticketing and group sales, contact tickets@indianranch.com or call 508.943.3871. For information on private events, banquets and renting the Indian Princess Paddlewheel Boat, contact banquets@samuelslaters.com. Indian Ranch is less than an hour's drive from Boston, Providence, Hartford and Springfield. Indian Ranch is located at 200 Gore Road in Webster, MA

