

Ashland

PRSR STD
ECRWSS
U.S. POSTAGE
PAID
PERMIT NO. 142
SPRINGFIELD, MA

Postal Customer
Local

Vol. 8 No. 2

Free to Every Home and Business Every Month

Septembre 2020

The Voice of Your Community

Ashland Schools Follow Hybrid Model for Fall Opening

By CYNTHIA WHITTY

Ashland School Superintendent Jim Adams submitted a reopening plan to the state on August 10 and shared the plan with the community that day through his newsletter. The plan can be read online, <https://bit.ly/3fNZxMo>.

Adams wrote to parents, guardians, faculty and staff, “. . . the Ashland School Committee approved my recommendation to start the 2020 School Year in a hybrid model. This plan has been submitted to the Department of Elementary and Secondary Education (DESE) for their approval.”

“The plan was voted by the School Committee on August 6,” Laurie Tosti, School Committee chair, said. “We will be returning with a hybrid model, which includes two days of in-person learning and three days of remote learning. No-



body will attend in person on Wednesdays, when a deep cleaning of each building will occur.”

“The plan was determined by a number of factors: DESE guidance, space, budget, sur-

veys of parents and staff, input from local boards (tour of buildings with School Com-

SCHOOL

continued on page 2

Hey Neighbor, Our Website is Your Website

Local Town Pages is excited to announce the re-launch of its website www.Ashlandtownnews.com. It has a bright and streamlined new



WEBSITE

continued on page 1



SUNNYSIDE CAFE

SATISFY YOUR BREAKFAST AND LUNCH CRAVINGS

Daily Specials!

Catering available | Senior Citizen Discount available

Everybody's Go-To Local Restaurant






Parties 3 or more, get 3rd entrée

50% off

(Expires: 9/30/20)

Monday through Sunday

Free Kids Mickey Mouse pancake for kids under 12 years old.

(Expires: 9/30/20)

15% off

total bill of \$25 or more

(Expires: 9/30/20)

Must present coupon to receive discount.

Hours: Mon-Fri 6am-2pm | Sat- 6:30-2pm | Sun: 7-2pm


24 Front St. Ashland, MA 01721 • 508-881-9895

www.sunnysidecafeandcatering.com

Let me help you love where you live!

Personal, professional and always putting the customer first

AMY ULISS
MDM Realty
963 WORCESTER ROAD
FRAMINGHAM
508-341-1422





mdmrealtyinc@gmail.com

**NOTHING IS THE SAME...
REAL ESTATE IS DIFFERENT TOO**

Selling or buying a home during a pandemic requires health and safety protocols.

We have you covered.



Tracy Beaudoin & Judi Teller



PremierResultsTeam.com

508.380.9296 | 508.380.1933

premierresultsteam@gmail.com



A Satisfied Mind: Meet Cliff Wilson

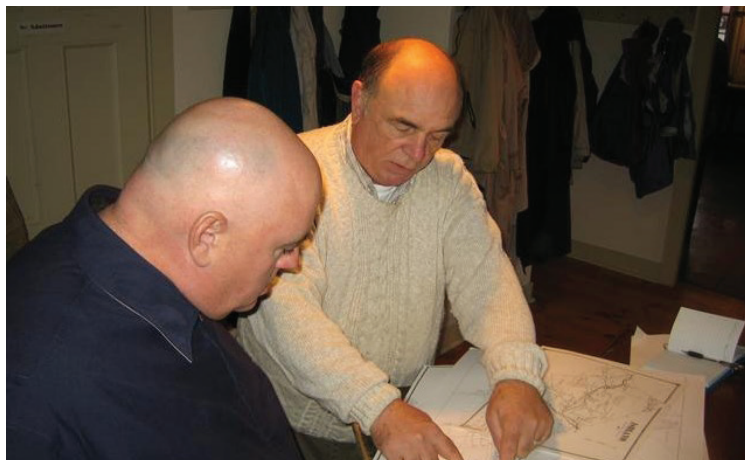
BY CYNTHIA WHITTY

Longtime Ashland resident Cliff Wilson is known to many as president of the Ashland Historical Society and for his digital art that he often shares on local social media sites. On his website, <https://cliff-wilson.pixels.com>, Wilson sells canvas prints, framed prints, posters, greeting cards, and more. His work includes historic and current views of Ashland, whimsical works, vintage cars, and views of beauty as he sees it.

In this interview, we get a peek at the man behind the camera.

Can you tell me about your art?

I started doing my artwork in 2012. I began painting with acrylic paint on canvas. I enjoyed painting, but felt the need for additional colors and vibrancy. I started to do digital imaging.



Longtime Ashland resident and president of the Ashland Historical Society, Cliff Wilson (right). (Photo/supplied)

What inspires you?

My primary goal is to promote Ashland, both past and present. I try to bring Ashland's history to life. The town has changed greatly during the past 175 years, and will continue to change. I feel that it is important to record what was here as well as what is here today. About two-thirds of my work is devoted to this goal. The other third is experimentation or something that just strikes me as interesting.

I know you are the president of the Ashland Historical Society. How did you come by your interest in preserving local history?

I was not an avid history student while in school. It wasn't until I started collecting telephone books that I developed an interest. In 1976, a friend brought

a 1957 Framingham phone book to work. The yellow pages were filled with stores and theaters and restaurants that were important to me as a child but no longer existed. Reading was a trip down memory lane.

After I started collecting the books, people began to ask questions. "When was the first phone book?" (February 21, 1878 - New Haven, CT); "When did Ashland get the telephone?" (1880). I discovered that I enjoyed researching the answers to these questions. The beautiful and dreadful thing about research is that you find your answer, but you also trip over so many extra questions along the way.

What happened to the money that Ashland was supposed to receive annually from the City of Boston for the economic damages incurred by the town when the reservoirs were built to supply water to Boston? I'm not sure that I ever got a straight answer

to that question. Allegedly, it was factored into the state funding "Cherry Sheet" when the MDC, now MWRA, was created. Although I didn't like the answer, asking the question prompted a request that I join the town's Historical Commission, which led to my joining the Ashland Historical Society, two very different entities. The Commission, when it exists, attempts to preserve the town's history. The Society, as a 501(c)3 charitable organization is not allowed, by law, to lobby for or against town issues. The Society records the history. It does not create it.

Do you have other interests or hobbies?

I love puns, much to the dismay of my family and friends. I love solving mysteries. I love reading. I love games such as Sudoku and mind benders. I love folk music. I also love water-skiing,



Worcester-bound train, acrylic painting by Cliff Wilson. (Photo/supplied)

golf, road rallies, and auto-crossing, but I don't really get the opportunity to indulge in those interests lately.

What is your background?

I grew up in Ashland on Concord Street. When I was 12 years old, my family moved to Framingham, so I attended eighth grade and high school in Framingham. We moved back to Roberts Road in Ashland right after I graduated. My wife and I later bought the Roberts Road house

WILSON

continued on page 3



Warren Telechron Company, 1928, acrylic painting by Cliff Wilson. (Photo/supplied)

localtownpages

Published Monthly
Mailed FREE to the
Community of Ashland
Circulation: 7,849
households & businesses

Publisher

Chuck Tashjian

Editorial

Susan Manning

Send Editorial to:

editor@ashlandtownnews.com

Advertising Sales Manager

Jen Schofield

508-570-6544

Production & Layout

Michelle McSherry

Advertising Department

508-570-6544

jenschofield@localtownpages.com

Ad deadline is the
15th of each month.

LocalTownPages assumes
no financial liability for errors
or omissions in printed
advertising and reserves the
right to reject/edit advertising
or editorial submissions.

© Copyright 2020 LocalTownPages

MONEY-SAVING COUPON!

MENTION THIS AD & RECEIVE

10% OFF

your next purchase!

Limited time offer; not valid with any other offers.

CURBSIDE PICKUP OR YOU CAN COME IN!

NOW OPEN

HOURS:
MON - SAT,
10AM - 7PM;
SUNDAY,
11AM - 4PM

hemolucid

508-533-4025
98A Main Street
Medway, MA 02053

www.cbdreleafmedway.com
cbdreleafmedway@gmail.com

SCHOOL

continued from page 1

mittee members, the Board of Health and the Select Board). All input was considered. The final decision made by the School Committee with the superintendent recommendation and the factors listed above," Tosti said.

"Administrators from every building had input into crafting the plan, and parts of plan will look different in each building depending on what is age/curriculum appropriate. The same safety measures will be implemented across the district. Each building will have a top to bottom cleaning, disinfecting, and sanitizing performed each Wednesday."

The switch to remote learning in the spring was abrupt but offi-

cial expect the fall opening to be smoother.

"With no training or preparation for the initial remote learning experience, it was not as robust as we expect it to be moving forward. Ten additional days of professional development have been added at the beginning of the year to properly prepare," Tosti said. "[I'm] not sure that there are any challenges unique to Ashland that aren't being experienced everywhere. Clearly we all believe that in-person/all-day learning is best and that the physical and emotional wellbeing of many children is enhanced by being in school. However, the challenges related to physical distancing and safety during this pandemic require the necessary modifications."

Around Ashland News

BY CYNTHIA WHITTY

Two-Way Stop at Eliot and Fruit

The Ashland Department of Public Works (DPW) in August installed traffic stop signs at the intersection of Eliot and Fruit streets. The DPW and the Traffic Safety Committee created plans for this intersection through the Complete Streets Program (www.mass.gov/complete-streets-funding-program).

Stage 2 Water Ban in Effect



The Town of Ashland, in mid-August, entered into a Stage 2 water restriction and issued guidelines, which prohibited the following outdoor water use: unattended watering using municipally-supplied water; car or vehicle washing using municipally-supplied water; washing of structures including but not lim-

ited to buildings, houses, sheds, driveways, sidewalks, decks, fences, or patios using municipally-supplied water; filling and topping off of swimming pools larger than 300 gallons using municipally-supplied water; and handheld watering using municipally-supplied water. For more information, visit the town's website, <https://bit.ly/31KKrCi>.

FEMA Grant Awarded

The Ashland Fire Department announced in August that it has been awarded a \$350,000 Regional Federal Emergency Management Agency (FEMA) Assistance to Firefighters Grant. The regional grant awarded to the Ashland and Hopkinton fire departments will be used to replace obsolete portable radios. This grant will allow both orga-



nizations to improve safety and provide better service to communities.

The Riverwalk, Mill Pond Park Now Open

The Riverwalk Trail, consisting of Mill Pond Park at Pine Hill Road, a large-span pedestrian bridge, walking paths, and benches, is now open for passive recreation, thanks to grants from the National Parks Service, the Mass. Executive Office of Energy and Environmental Affairs, and the town's Community Preservation Act. A \$1.2 million project, The Riverwalk Trail runs along the Sudbury River and the north side of Mill Pond, connecting downtown with Ponderosa Road and the nearby train station. The bridge across the Mill Pond provides direct access to the Bay Circuit Trail (www.baycircuit.org), a 200-mile regional trail extending from Duxbury to Kingston.



(Photo/Cynthia Whitty)

EPA Announces Final Cleanup Plan for Nyanza Superfund Site

On July 30, the U.S. Environmental Protection Agency (EPA), in consultation with the State of Massachusetts, selected a plan to cleanup groundwater contamination at the Nyanza Chemical Waste Dump Superfund Site,

Operable Unit 2, located in Ashland.

The announcement said, the selected remedy is intended to reduce the concentration of contaminants in groundwater to levels that will be protective of human health for exposure to indoor air, such that the existing vapor mitigation systems are no longer needed, and to minimize the need for controls to protect construction workers during excavation activities. Read full press release here: <https://semspub.epa.gov/work/01/647898.pdf>.

Summer and Fall Recreation

Summer at the Ashland Recreation Department looked a lot different this year. In spite of the pandemic, Director Kelly Rund was able to create a summer camp for Ashland's youth. "When we first went into shut down back in March, we weren't

really sure what was going to happen this summer. . . . It's definitely not the summers we are used to around here, but we were able to create a fun program for these kids. They had a great time, and a safe time, which is the most important thing" Rund said.

The summer program ran at half capacity, hosting 60 children. They broke into groups of 10, and only interacted within their own group. This setup created opportunities for ample social distancing and kept each cohort safe and contained. Handwashing stations and tents were installed outside, helping each group to stay safe. The children enjoyed tie-dye day, craft time, walks in the nearby state park, visits from an ice cream truck, and an inflatable water slide to stay cool.

Rund hopes to work with the school this fall to offer programming for children in some capacity.

WILSON

continued from page 2

from my parents, where we lived until we moved to our current home on Eliot Street in 1994.

I attended Worcester Polytechnic Institute for two and a half years studying electrical engineering. I changed my school and major when I transferred to Suffolk University earning a BSBA Management degree. Living in an apartment on Beacon Hill in the late 1960s was an amazing experience. I started working at Framingham Motor Parts while at Suffolk and continued working there for the next 25 years or so. I worked for RH Long, Everett Auto Parts in Marlborough and Natick, and Northeast Automotive in Billerica for the next 10. I enjoyed the parts business. Many individuals are at a total loss when their vehicle is down and it was very satisfying to be able to help

them regain their ride.

I left that field and entered a field that was both similar and very different. The computer service industry. I worked as a customer support specialist for a company that both partnered with and competed with IBM, Compaq, Sun, STK, Dell, HP, Fujitsu, EMC, AT&T, Cisco, and

other companies to service the needs of the major industries, schools and governments around the world.

One of my most memorable instances was coordinating the delivery of a part and field service engineer to the New York Stock Exchange to repair their security system immediately after 9/11

while New York City was in lockdown. I really enjoyed that job, but the company was sold and the new owners decided to lay off the more experienced (higher paid) workers after their first-year profits didn't meet their expectations. I retired and started painting.

I have been blessed with retaining friendships from the Federated Church fellowship, from

the automotive field, from the computer field, the Historical Society, the music world, and the art world. I have been blessed with a great family.

Although I never attained my initial goal of being a retired millionaire by the time I was 35, I have no regrets. I firmly believe the song that states, "I'm richer by far with a satisfied mind."

12 Concord St Holliston, MA
Phone Orders 774-233-1966
GRAB-N-GO SPECIALS
 Pizza | Paninis | Subs | Sandwiches
 Burritos | Tacos | Salads
7 Days a week!
WE DELIVER to Holliston, Hopkinton & Ashland
Curbside Pick Up
Cornering the Market...on DELICIOUS!
The Corner Market

AFFORDABLE JUNK REMOVAL
 You Don't Lift a Finger!
We beat ALL competitor pricing.
774-287-1133
DUMPSTERS AVAILABLE

LET US CLEAN OUT YOUR UNWANTED JUNK
 Serving Metro-West and Beyond!

\$25 off a full truck if you mention <i>local town pages</i> <small>Not to be combined with any other offer</small>	\$299 15 Yard Dumpster <small>Not to be combined with any other offer</small>
---	--

SEE WEBSITE FOR DETAILS
AffordableJunkRemoval@gmail.com
www.TakeAwayJunk.com

WEBSITE

continued from page 1

look. Our goal is to create a site that's about you, your neighborhood, your businesses, your community resources, your town's news, one stop – the voice of your community.

Online, you will be able to access the entire newspaper and features to empower you to become an active member of the community. Post events and what's happening around town directly to our community announcement page. Easily share to your social media! Don't forget to "like" us on Facebook! We have built an online directory, with maps, where you can effortlessly explore local businesses serving our community. Get updates on what's going on in your area on our event and calendar page. You'll find user-friendly guides to get information faster and a reference directory with links to the town schools, library, town

government, fire, police, and more. You can easily link to the same resources in neighboring towns.

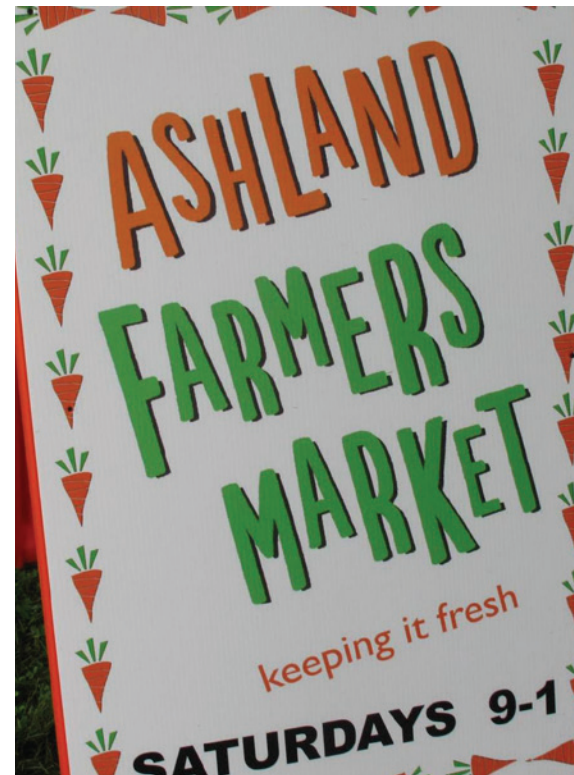
Remember, these have been difficult times, and it is so important to support the businesses that support our community. You can check out business profiles, leave a review, connect to their Facebook page and website.

Businesses – a corporate profile on our new directory can feature your company on our opening page and drive visitors to your website with links, a map, and graphics. You can take advantage of becoming a community sponsor, that will allow you a more prominent presence on Ashlandtownnews.com. You can sponsor content that will keep you in mind with readers.

At *Local Town Pages*, we're part of your community. We're excited to highlight your town, and your neighboring towns, with a one-stop resource that opens the door to your hometown and what it has to offer.

MetroWest Emergency Relief Fund Awards Ashland Farmers Market SNAP Match

The Ashland Farmers Market (AFM) is offering a generous \$25 SNAP match for all SNAP shoppers each week, thanks to a \$7,000 MetroWest Emergency Relief Fund grant from the Foundation for MetroWest (www.foundationmw.org). In addition, SNAP recipients can receive free freshly picked fruits and vegetables from two farms at the market under the Massachusetts Healthy Incentives Program (HIP). Making sure that everyone has access to fresh, local food is an important part of AFM's mission. The SNAP match increase started on Aug. 15, and will continue through Oct. 10, or until the money runs out. AFM is open on Saturdays from 9 a.m. to 1 p.m. at 125 Front St., on the grass across from the Ashland Public Library. For more information, visit www.ashlandfarmers-market.org/contact. To sign up for weekly email, visit www.AshlandFarmersMarket.org.



Run Your Ads With Us! Call Jen Schofield (508) 570-6544

localtownpages

LocalTownPages is excited to announce the launch of our redesigned local community site!

Get your latest community news, sports and town happenings updated every day!

Check out the latest events and announcements around town!

Tap into our Local Service Guide giving you hundreds of local business listings!

Submit your own happenings around town, or local events!*

**Submissions are published at the discretion of the publisher and no advertising or self promotion will be accepted as free listings.*

To Advertise your Business on this site, please email: jenschofield@localtownpages.com | 508-570-6544



SCAN ME

ashlandtownnews.com



Like us on Facebook for up to date happenings around town!

Ashland's Dragonfly Festival is On!

BY CYNTHIA WHITTY

The 7th annual Dragonfly Festival will run for three days this year—Thursday, Sept. 10, Friday, Sept. 11 and Saturday, Sept. 12—instead of the usual one day. On each of these dates, WACA TV and Facebook Live will bring an hour and a half of arts and culture to viewers.

Organized by Arts! Ashland Alliance, the Dragonfly Festival features seasoned musicians, dance performances, kids' entertainment, up and coming students, artisans and theater, and commentary by community members on the value of arts and culture.

Arts! Ashland has partnered with WACA-TV to create this virtual event. Adding two more days allows the coordinators to present more talented local performers. Viewers have the opportunity to enjoy the festival from the comfort of their own homes or small private watch parties.

The programming this year is expansive with more artist performances, and provides an opportunity for Arts! Ashland to acknowledge and support its valued sponsors and community organizations. Local artisans will be interviewed and talk about craft making, describing their creative process, displaying their work and talking about how they got started and what inspires them.



Balla Kouyaté of Crocodile River Music (Photo/supplied)

Each day will showcase a variety of performers and genres, and then culminate in a full set feature by a headliner act.

The performers will include a piano duet by Shreya and Lakshya Srinivasan – students of Lelia Viana; Crocodile River Music and their global African fusion sounds; Rick Goldin with children's music and puppets; The Dale Show with classic and original rock n' roll tunes; Ashland Town Manager Michael Herbert; Peter Ward Band; Jonathan Campbell; Jimmy Zimardi; Peyote Buttons; The Cardinal; Randy Batson and Lori Diamond; and Fred Abatelli with Fates Landing.

In addition, Ashland Community Theater will present a comedic look at life during the COVID pandemic, entitled "I want to Scream," and Annemarie's Dance Centre's the Performance Project will present an original dance and NatyA Sala traditional Indian dance.

For up-to-date information on offerings and the schedule, visit the Dragonfly Festival Facebook page and the website, www.dragonflyashland.org. Information can also be found on the Arts! Ashland Alliance Facebook page and the Arts! Ashland Alliance website, www.arts-ashland.org. Contact the coordinators by emailing info@arts-ashland.org.



Annemarie's Dance Centre (Photo/supplied)



Shreya and Lakshya Srinivasan (Photo/supplied)

CLEANOUT COUPON
ONE COUPON PER CLEANOUT. *\$100 MINIMUM.

Junk it Now! us
PRO-JUNK-REMOVAL

\$25 OFF **\$25 OFF**

We load & take everything!

ONE ITEM OR MULTIPLE TRUCK LOADS
"We empty - the Junk Bag"
(3 cubic yards) Call for Price

Buy at store - Fill it - We empty & Leave it

Homes • Apartments • Businesses • Yard waste
Pools • Boilers • Hot Tubs • Sheds Removed • Appliances
* Fully Insured * Call Tom Cassidy

\$25 OFF **1-855-533-JUNK (5865)** **\$25 OFF**
toll free **1-508-308-2279 (Cell)** www.junkitnow.us

We junk cars, trucks, vans, boats, RVs, campers, etc.

Matt Gamache
Realtor

Serving Ashland for over 10 years

TOUCHSTONE REALTY

Call for a market analysis

508.561.2757
www.MattGamache.com

Special Gift to Senior Dancers

Ashland resident and professional photographer Megan Moore of Megan Jane Photography reached out this summer to Annemarie's Dance Centre. Moore was interested in doing something special for the senior dancers who lost their annual recital, along with many other milestones in this pivotal year of the pandemic. Moore opened her backyard to Dance Centre seniors interested in having their photos taken in their recital costumes. The photos were then given to the students free of charge.



Ashland senior Madi Burack (Photo/Megan Jane Photography)



Ashland senior Rachel Bier (Photo/Megan Jane Photography)

Honor your Veteran on our Dedication Page:

Submit your Vet's Photo, Your Tribute message whether they are in **Active Duty, Retired,** or a **In Memoriam.**

Portion of proceeds from this section will be donated to a Veteran Charity of Choice.

Please email photo and tribute to: jenschofield@localtownpages.com

Cpl. John Smith
U.S. Army
Served 1920-1941

YOUR TRIBUTE MESSAGE HERE.

\$50 PER BLOCK
AD SIZE
 2 1/4 inches x 3 inches

Your Money, Your Independence

To Convert or Not To Convert: Taxation Is The Question

There are many aspects to successful financial planning, including being proactive to potential change, vetting all options and giving yourself time to reflect prior to execution.

An area I'm discussing with clients currently is their philosophy towards taxes and future tax rates, specifically the impact of Requirement Minimum Distributions (RMDs) in retirement to their tax liabilities. Recall with Traditional IRAs the government requires a percentage each year after age 72 be made taxable, regardless if you need the funds.

To help reduce future RMDs one can do a Roth Conversion, the moving of Traditional IRA assets to a Roth IRA where you pay the taxes now on the amount

converted as earned income. A Roth IRA offers tax-free growth potential, tax-free income distributions and has no Required Minimum Distributions (RMDs).

Why now, given the Tax Cuts and Job Act passed in 2017 by Congress reduced tax rates until 2025? Things can change and it is better to be analytical and measured over 5 months than rushed during the holidays to act before 2021.

Anyone, regardless of income levels, can convert to a Roth IRA.

There are complexities and variables, which many CFPs can help with projections, scenarios and provide recommendations beyond "should" or "should not". Proper planning allows you to estimate an appropriate

amount to convert this year (and future years), project tax liability and compare scenarios of portfolio and net worth impact with assumptions.

Some considerations:

The pro-rata rule and taxes.

When converting, the IRS considers all traditional IRA account balances combined and you must figure out the proportion of which is nondeductible contributions, then use this percentage to determine how much of your conversion will not be taxable. You can't choose to convert only after-tax money; the IRS won't allow it.

Best to convert at year-end.

A conversion must be completed by December 31 and the amount converted is included in

that year's taxable income. By choosing year-end to convert, you reduce the range of Modified Adjusted Gross Income (MAGI) variables and improve chances of converting to the top of your current tax bracket.

Not all-or-nothing. You can develop a plan to spread conversions over several years, even skip a year or two as needed pending MAGI levels and ability to pay taxes with non-IRA assets.

What's done is done. Given that tax law changes now prohibit conversion reversals ("recharacterization"), it is important to be measured, give yourself time to reflect and re-run the latest data before execution.

More to consider beyond this limited space, talk with your tax professional or Certified Financial Planner.

The opinions voiced in this material are for general information only and are not intended to provide specific advice or recommendations for any individual.



Glenn Brown

Glenn Brown is a Holliston resident and owner of PlanDynamic, LLC, www.PlanDynamic.com. Glenn is a Certified Financial Planner™, Chartered Retirement Planning Counselor and fee-only fiduciary helping clients take control of planning and investing, so they can balance kids, aging parents and financial independence.

Outdoor Furniture That Beckons You Outside

BY JOHN SZOLOMAYER, RE/MAX EXECUTIVE REALTY

Do you want to spend more time outside? If so, you may need to consider which outdoor furniture works best in your space. You also want to think about how guests and children will use the space as well as its durability based on the weather. Here are some ideas to get you started.

Seating

The first step to creating a comfortable outdoor gathering space is to focus on the seating. You can select from among dozens of possible options — from wooden Adirondack chairs to wicker with soft, weatherproof cushions. Choose what will wear best in the space you have available.

Tables

Tables are equally important. You may want a large table where friends and family can gather for a meal or you may want small tables to scatter about for cocktails. The tables you choose will depend on the look you want and how you want the space to function.

Fire Pit

For many people, a fire pit is an essential outdoor décor item.

You can build one into your outdoor space using bricks, stone or cinderblock. Be sure to read how to safely construct a fire pit. Or, you can buy one to fit your space and work with either wood or gas.

Lounging

Outdoor living means lounging. This is especially true if you have a pool. And long gone are the days of the woven plastic foldable loungers. Choosing a comfortable chaise will help you relax

in the summer sunshine.

Playtime

Of course, if you have kids, your outdoor space may look quite different from those who focus solely on entertaining

guests. Outdoor play space will be a key consideration. You can choose a swing set or a sandbox or a combination of items for outdoor play.

Information provided by John Szolomayer, RE/MAX Executive Realty. Each office is independently owned and operated. For mor information, John can be reached at (508) 259-4788 or JohnSzolomayer.com

Want financial independence?

Are you building with:

- Fee-only Certified Financial Planner™
- Strategies for budget, cash flow & debt
- Low-cost investments ■ Growing income streams
- Maximizing work, government & health benefits
- Tax planning ■ Insurance analysis ■ Estate planning
- College savings for kids ■ Care for elderly parents

We help you take control of planning and investing, so you can balance kids, aging parents and financial independence.



Glenn Brown, CFP®, CRPC
508-834-7733
www.PlanDynamic.com



PlanDynamic, LLC is a registered investment advisor. Please visit our website for important disclosures.

Ask me about our safety protocols for buyers and sellers! I use Virtual Showings and Video Tours to help sell your home. Only Attracting Serious Buyers.

Now is the perfect time to SELL. Let's get started on your next move.



A Quality Agent Isn't Easy to Find!

John Szolomayer (508) 259-4788

JohnSzolomayer@gmail.com | www.JohnSzolomayer.com



Living Healthy

Ashland Senior Center Adds Programs



Senior Center staff are introducing more programs as pandemic restrictions are lifted. (Photo/supplied)

BY CYNTHIA WHITTY

The staff at the Ashland Senior Center and the Ashland Human Services Department—both are located at 162 W Union St. (Rt. 135)—continue to connect to their patrons during the pandemic through phone calls and letters and by maintaining access to the Ashland Food Pantry.

As COVID-19 cases lessen and the state starts to reopen, the Senior Center staff is offer-

ing programs, such as take-home crafts and guided outdoor walks. In August, the center began an in-person caregiver support group, allowing residents to communicate with one another and have an opportunity for respite. These groups offer practical tips and resources in a relaxed and safe environment.

For more information and to sign up for these programs, call the senior center at 508-881-

0140. To contact human services, call Jennifer Wuelfing for the food pantry, 508-532-7942, and Cara Tirrell for caregivers support, 509-532-7946.

Curbside Lunches Available

The Senior Center will offer curbside pick-up for Monday Lunches. A lunch catered by TJ's will be available for \$4. Sign-ups will be taken up until 3 p.m. Thursday each week. No orders can be taken after Thursday.

Seniors must pay for lunch in-advance by calling 508-881-0140 x1 to order. They then must drop off or mail payment to the center. Exact change or check is appreciated. For everyone's convenience, the center will take curbside sign-ups and payment for future Monday lunches when you come to get your lunch order.

The Ashland Senior Center and staff will be following every safety precautions mandated by

the CDC for restaurant and take-out services. There is no need for anyone to get out of their cars. Seniors can pop their car trunk or a staff member can open the back door of the car and place the lunch safely inside.

Practically Fit Classes To Come

The senior center reports that Practically Fit instructor Mary Ellen Giombetti will be back leading classes via WACA-TV. Dates and times to come.



M A I N S T R E E T P E D I A T R I C S



Main Street Pediatrics would like to announce that **Dr. Katherine Pleet, MD** has joined our practice and will start seeing patients as of September 2, 2020. She is accepting new patients of all ages.

Dr. Pleet received her undergraduate degree in Biology from Brown University. After graduating, she spent a year as an AmeriCorp member teaching and mentoring high school students in Dorchester, MA before attending medical school at Jefferson Medical College in Philadelphia. She completed her pediatric internship and residency in Boston at The Floating Hospital for Children at Tufts Medical Center. Dr. Pleet has had a long- standing passion for working with children and adolescents, and feels it is a great privilege to be a pediatrician.

Please call 508-435-5506 for an appointment
77R West Main St. Hopkinton • mainstreetpediatrics.com



WE'RE OPEN!

Let's make **HEALTHY HAPPEN**

Open 24 Hours
Personal and Group Teaining
Hydro massage bed

309 Pond St · Ashland, MA

508-881-4900

www.anytimefitnessashland.com

Ashland's Virtual Table, All Residents Invited: September 13

BY CYNTHIA WHITTY

Our stories around food are a great path to understanding different cultures and backgrounds. Ashland is United (AiU), a group whose mission it is to create a culture of inclusivity and acceptance in town, has held past events, "Breaking Bread Together" and "Baking Bread Together," which have proven that food brings people together. To continue this theme of food and connection, AiU is organizing a virtual discussion and dinner event: "Ashland's Virtual Table: Join Us for

a Meaningful Meal," to be held via Zoom on Sunday, Sept. 13, 6 to 7.30 p.m.

Ashland residents are invited to register and prepare a favorite dish from their culture or family to eat while engaging in the virtual discussion. There will be an opportunity to share recipes after the event. To participant, register online at <https://qr.go.page.link/WjhcH> or visit AiU's website, www.ashlandisunited.org. AiU will provide registrants with discussion questions in advance. For more information, email ashlandisunited@gmail.com.

"Sharing our stories around food is a great vehicle to understanding different cultures and backgrounds," Jane Greenstein, an event organizers, said. "In this setting, food is a prompt for sharing the stories of what's on respective tables and why, and to use that as a jumping off point for sharing other stories of the moments that matter most. The goal over dinner is to strengthen individual and collective resilience, create connections and build bridges across political, ideological and identity differences. It is possible to find commonalities but also grow comfort in discussing and celebrating differences."

The organizers believe that a virtual, moderated discussion will allow for sharing ideas and experiences that go beyond hashtags.

As the pandemic began earlier this year, AiU developed an online project of sharing stories from their "grandmother's basket" that offered an opportunity to connect with others at a time when social distancing became the new normal. The organizers believed that a collection of stories offered comfort and reminded everyone of the sense of belonging and community.

In joining and organizing #StandupAshland, another AiU project, the group partnered with other groups in town to stand up against racism. As part of this

event, residents were requested to participate in a virtual vigil in support of an inclusive Ashland community.

"It was a somber yet successful event. Its anti-racism statement has been celebrated by its own members and also the town administration," Greenstein said.



Shed Your Weight!

Lose 20 to 40 lbs in 40 days or less!

We've Reopened



All natural, no exercise, no prepackaged foods, no drugs!

Kickstart your weight loss! Call or book a free consultation today!

MassFatLoss.com

508-881-1002

274 Union Street, Ashland

VETERINARY CARE for your companion

Our veterinarians provide personalized, compassionate care



PREVENTATIVE MEDICINE, VACCINATIONS, SPAY & NEUTER, EXAMS AND CONSULTATIONS, PUPPY AND KITTEN CARE, SURGICAL CARE

Call us today to schedule an appointment!



PET HOSPITAL
LASER AND WELLNESS CENTER

FREE First Visit for Dogs and Cats

Dogs 12 months or older, cats 6 months or older
New clients only with this ad.
Expires 8/31/20

508-231-1223

300 Eliot Street, Ashland

www.thefamilypethospital.com

Medicine • Surgery • Exotics • Retail • Cat Friendly Certified
Doggie Daycare • Dog Training • Grooming • Medical Boarding



Sha'arei Shalom

Spend the High Holidays -virtually- with us!

We are planning virtual Rosh Hashanah and Yom Kippur services that will be open and welcoming to all. The schedule will be released soon. Join our email list by contacting us at info@shaareishalom.org to stay informed!

Join us for Virtual Rosh Hashana and Yom Kippur services with Rabbi Eric Gurvis

for more info:
shaareishalom.org
508-231-4700

Religious School now enrolling grades 1 – 7
email: school@shaareishalom.org

Resilience and Grit Define Class of 2020

BY CYNTHIA WHITTY

Ashland High School Principal Kelley St. Coeur welcomed 158 students to the 2020 Ashland High School's socially distanced graduation ceremony on Aug. 2. The ceremony was lived-streamed by WA-CA-TV.

Thirty-two students, out of a total of 216, who could not wait until Aug. 2 because they were entering the military, going out of state, or for other reasons received their diplomas on June 13 in the high school gym. Others chose not to participate in the Aug. 2 ceremony due to COVID-19 or other reasons, Principal Kelley St. Coeur said.

Principal St. Coeur welcomed students and their families to the Aug. 2 ceremony with these words:

"Good morning again and welcome to our August graduation ceremony for members of the Class of 2020. I am

thrilled to finally be here to celebrate with you. While most members of our school community, including the School Committee, faculty, scholarship donors and others, could not be with us today, I know how very proud they are of this class."

"... Today's ceremony marks the official end of your career as students of the Ashland Public Schools. It is not the end we all imagined when we celebrated your convocation on September 6, 2019. These are incredibly trying times in our society as we fight this serious, ongoing pandemic, along with systemic racism in our country. You have faced challenges and conflicts over the past several months we could never have imagined a year ago as you painted the windows of AHS, making sure to include every member of the class. But you have come together to show resilience and grit as well as a



Claire Liu, valedictorian

willingness to work through conflict. I hope these qualities will define your generation."

"Go out into the world with your education from AHS to make it a better and truly equitable society for all, find the answers to medical mysteries, shed a light on getting help when you are struggling in any manner, and demonstrate to all what it means to keep connected, even when things seem too difficult to do so. Most importantly, cherish this time you have been able to spend with family and friends. There have been many opportunities presented to us during this time to really evaluate what it important."



Adrianna Fawkes, performer

"I am so excited to see you all finally receive your diplomas today. I am not alone in wishing I could shake your hands. Know that I, along with every member of the APS community, will be cheering you on as you cross our stage and head out to make your mark on the world."



Brendan Grover, class president

MARSDEN LAW P.C.

&

SOLARES HILL ADVISORS



Coordinated planning for you,
Comprehensive planning for life

Trusts & Estate Planning | Wealth Management

(508) 858-5324 | 847 Washington Street
Holliston, MA 01746 | www.jmarsdenlaw.com

Call today for your free consultation
and complimentary portfolio recommendation

Securities offered through Advisory Group Equity Services, Ltd.
Member FINRA/SIPC/MSRB. Advisory services offered by Trust Advisory Group, Ltd.,
a Registered Investment Advisor 444 Washington St., Suite 407, Woburn, MA 01801
(781) 933-6100. Marsden Law P.C. is not affiliated with Advisory Group Equity Services, Ltd
or Trust Advisory Group, Ltd.



Ashland Business Beat

BY CYNTHIA WHITTY

The Ashland Business Association (ABA) is planning an in-person business networking social for its members and their guests on Wednesday, Sept. 2, 5:15 to 7:30 p.m., at 126 Self Storage, 162 Pond St. (Rt. 126), Ashland. Attendees are asked to register in online, <https://ashlandbusinessassociation.com/event-3915673>. Beer, wine and refreshments will be served. Business owner Mike Kane will have a table set up at the door with hand sanitizer, masks, gloves and a temperature gauge. Masks may be removed when eating or drinking but should be used when conversing. Kane may have outdoor seating and golf cart ride tours, weather permitting.

From March to June, the ABA held weekly virtual programs, featuring experts in a wide range of subjects, including loans, legislation, COVID-19 safety procedures, and business innovation.

ABA Map Showcases Businesses

The full-color ABA map, produced every two years, features streets, trails and more. The map will be delivered to every resident and business in the fall as an insert in Ashland Local Town Pages. The map will be available for 24 months in public venues, such as the library, town hall and police and fire departments, as well as at local storefronts. The 7th edition map will feature ads and listings for many ABA businesses and serve as a guide for residents who want to shop local and support Ashland businesses.

In addition to streets, schools and town buildings, the map identifies town forest and other hiking trails, open spaces, historic

and scenic areas, boat launches, and bike rack locations. This edition of the map will be designed by Mike Marschke of DareDevil Studios, Ashland. To list your ad or business name to the map or for questions, email Dick Bennett, metrowestbookandtax@gmail.com.

Advertise This Holiday Season

The ABA is offering its members an opportunity to list their business name in the ABA/Ashland Local Town Pages ad for the holiday season (October, November and December). The newspaper ad is 2 columns x 6 inches; the more names the ABA gets, the bigger the ad. The ad offers businesses the opportunity to get their



The ABA map, with business members' ads, is produced and widely disseminated every two years. (Photo/Cynthia Whitty)

name in front of every Ashland resident and business for a modest cost. To sign up, visit <https://ashlandbusinessassociation.com/event-3769292>.

Town Business Resources

Most Ashland businesses

have changed the usual way of serving patrons. For a list of businesses, updated information, and modified hours of operation, visit www.ashlandmass.com/781/Business-Directory-During-COVID-19. For a list of restaurants, visit <https://bit.ly/3iy05Yw>.

For a list of business recovery resources, visit www.ashlandmass.com/566/Business-Recovery-Resources, and restaurant recovery resources, <https://www.ashlandmass.com/801/Restaurant-Recovery-Resources>.

Milford Federal Awards Scholarships to Local High School Students

Milford Federal Bank has awarded several scholarships to local high school graduates towards expenses in furthering their education. "Milford Federal Bank is pleased to help each student pursue their dream of higher education," said Paul Gilbody, President and CEO of Milford Federal Bank. "As a community bank, we are committed to supporting the communities we serve. An investment in education is an investment in the future, and these bright students are the future of their communities."

The Milford Federal scholarship program has awarded \$10,000 annually, for over 10 years. Each school selected a scholarship recipient based on need, academic standing, and involvement in school and extracurricular activities.

The following graduating high school seniors from Milford and surrounding areas were each awarded a \$1,000 scholarship: Blackstone Valley Regional Vocational Technical High School: Sage Hurteau, attending Coastal Carolina University; Hopedale High School: Taylor Maddalena, attending University of Tampa; Milford High School: Reese Dutcher, attending Pace University; Nipmuc Regional High School: Casey Costello, attending Bryant University; Northbridge High School: Hailey Bober, attending Hofstra University; Uxbridge High School: Sonila Murati, attending University of New Hampshire; Whitinsville Christian School: Hadley Koeman, attending Calvin University and Camily De Oliveira Sena of Douglas High School.

Run Your Ads With Us!
Call - Jen Schofield (508) 570-6544

NEW ENGLAND REGLAZE

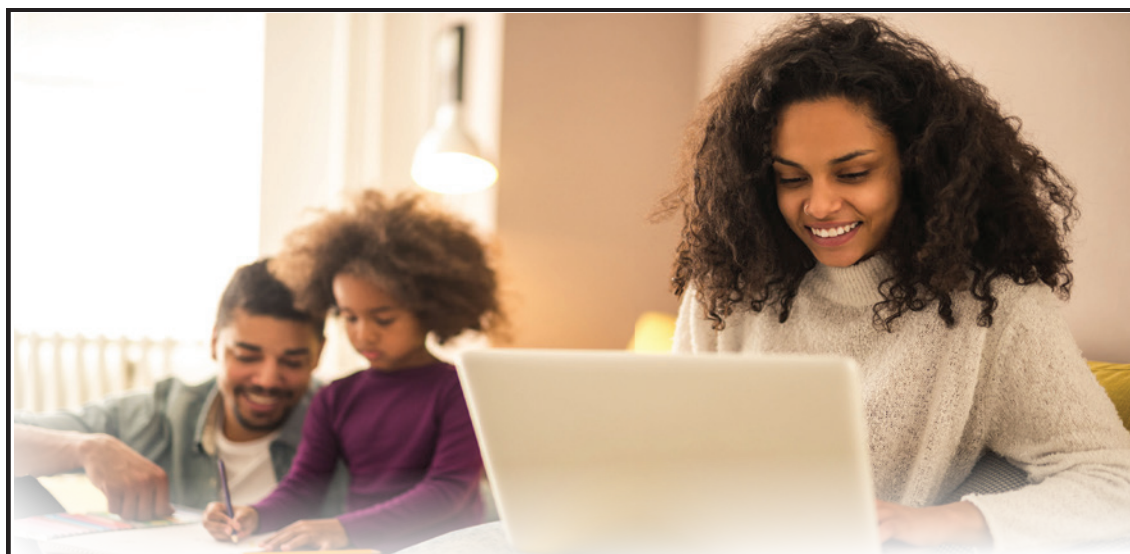
Don't replace your old tub, reglaze it!
Tubs, tile sinks and much more

NOW \$299.00

We do any TUB!
CALL US NOW
617-895-7771
www.newenglandreglaze.com

SAVE \$100 WITH AD

Reg. \$399
Color, travel, may apply.



Online and Mobile Banking offers a convenient, contactless and secure way to bank...Anywhere, Anytime!

- ▶ View account balances, transfer funds and pay bills with online banking at MilfordFederal.com.
- ▶ Deposit checks, transfer funds and more using our Milford Federal Bank mobile app.
- ▶ Mobile Wallet- pay with just a tap- no need to swipe or insert your card.
- ▶ Sign up for e-statements through online banking.



Visit MilfordFederal.com or download the app today to get started!



Milford | Whitinsville | Woonsocket



Sports

Ashland Summer Baseball Wins Championship

BY CHRISTOPHER TREMBLAY
STAFF SPORTS WRITER

When the American Legion postponed the season in early May the Ashland team, whose players had already been denied a high school season, was looking at yet another three months with no baseball.

Luckily, the Massachusetts International baseball League (MIBL) was created for baseball players who were unable to participate in the 2020 season due to Covid-19.

Although Ashland would not be able to represent Post 77 as they have during the American Legion season, they would get to play baseball to some extent.

The MIBL opened its summer season on July 7, and Ashland grabbed their first win, a 5-2 victory over Needham. The Ashland nine would then rattle off another five wins to go 6-0 before they would lose their first game of the season 9-5 to Milton. Ashland wouldn't lose again the rest of the way and concluded the first MIBL season with a 14-1 record earning 28 points, 4 more than second place finishers Braintree and Medfield, to capture the top spot entering the double elimination tournament.

"Going into every year you're never sure 100% of what you are going to get out of your players. I did know that we had a good group of athletes coming back and had the opportunity to make a good run, so I really wasn't surprised with our performance,"



Ashland Coach Jake Obid said. "Against Milton we were short-handed and couldn't catch a break, everything we hit was right at someone. They played better than we did and eventually just pulled away in the top of the ninth."

Obid and his team would have like to have had the chance to meet up with Milton in the playoffs, but did not get the chance to avenge their only loss.

"It would have been nice, but if we take care of business in the playoffs then that one loss doesn't matter at all," the Ashland skipper said.

With 10 or 11 players returning from last year's American Legion State runner-up team, Obid was overly optimistic about the team that he was going to roll

with during the MIBL season.

They key to their success would be the team's offensive fire power. During the season Ashland not only averaged 10 runs per game throughout their 15-game season, but they also got great pitching performances from their arms.

Offensively Dom Cavanaugh lead the team with 22 RBI; Jackson Hornung batted .400 with 3 homeruns, 4 triples, 5 doubles and recorded his career 100th hit for Post 77; Nick Calabrese batted .620 during the regular season and Sammy Farrell also contribute to the mix of consistent power and runs.

On the mound Ashland was led by Owen Radcliffe (5-0) and Tyler Dossas (4-0) and was the game winning pitcher in the deciding playoff game). Dylan Fonseca and Louie Denison also showed dominance on the mound and although Cavanaugh was kept off the bump due to soreness, he really wasn't needed during the regular season.

Entering the double-elimination tournament, Ashland was awarded the number one seed overall and would play its opening games in Pod #1. (the tournament had four pods with four teams in each pod). The boys from Ashland opened the tournament with a dominating 26-0 win over Kingston and then added a 13-1 victory over Walpole before



dropping their first post-season game 5-1 to Hyde Park; something his team did not see coming.

"After the first two wins convincingly, I think the guys thought that we were going to steam roll through the playoffs and they were not ready," Obid said. "Hyde Park pitched a hell of a game and we didn't hit that well and when we did, we hit it right at someone. We were never really able to get that momentum that we needed and our mentality coming in took over us."

Now finding themselves one loss from elimination Ashland came into game 2 against the Boston team with a totally revamped attitude.

"We meet at the field an hour and a half before the game was to start and I had a talk with the team," the Coach said. "As soon as we got to the field for the game, I knew that it was already over before it started."

Ashland was not only focused but humbled after their 5-1 loss to Hyde Park and sent the Bos-

ton based team pacing as they secured their spot in the final four with a 3-1 win. Dossas not only pitched a complete game he also drove in two of Ashland's three runs in the victory sending the squad into the next round.

Ashland will now join Braintree (pod 2 winner), Medfield (pod 3) and Quincy (pod 4) in the final four. The final teams will once again engage in a double-elimination tournament for the first MIBL Championship.

Although Ashland has had success with all three teams during the regular season, Obid takes no stock in what his team prior to the tournament.

"We're not playing in the regular season anymore, it's the post-season and everything resets, and the pressure is higher," he said. "We played Braintree and Quincy early in the season and had a tournament type game to close out the season with Medfield, but it's a different time of the season and we are not looking at our past results."

ASHLAND HOME IMPROVEMENT

GUTTER CLEANING & SNOW PLOWING

CARPENTRY • INTERIOR & EXTERIOR PAINTING

- Window & Door Replacement
- Kitchen & Bathroom Remodeling
- Wood Flooring • Decks • Siding
- Roofs • Masonry • Power Washing
- Gutter Repairs & Cleaning
- Basement Finishing



Detailed & Meticulous Reasonable Rates

Call Mauricio

508.202.8602

FULLY INSURED MA HIC.#169427

Sports

ADs Take Guarded Approach to State Agency's Sports Guidelines

EDITOR'S NOTE: The Mass. Interscholastic Athletic Association and the Department of Elementary and Secondary Education issued its guidelines as Local Town Pages was going to press. Sports for the fall season that are in the lower and moderate risk categories can compete with modifications but football, competitive cheer and unified basketball are classified as high risk. Those teams can only practice this fall but their seasons could get underway in a floating season that would run from late February to late April.

BY KEN HAMWEY
STAFF SPORTS WRITER

Four of the area's veteran athletic directors are taking a wait-and-see approach to the guidelines for youth and amateur athletics that were announced by the Massachusetts Executive Office of Energy and Environmental Affairs (EEA) on Aug. 13.

The guidance, issued because of the coronavirus pandemic, puts football in a highly doubtful category. The Department of Elementary and Secondary Education (DESE) is expected to offer its guidelines soon and both sets will provide the Mass. Interscholastic Athletic Association (MIAA) with additional insight. To prepare for a fall season, the MIAA's COVID-19 Task Force will have to consider modifications for moderate- and high-risk sports to allow for competition.

If football is played this fall, games would have to eliminate contact by replacing tackling with flags or playing a two-hand touch in a seven-on-seven format. Two options could be the creation of an additional season between winter and spring sports or playing football next spring.

Before detailing how the area's athletic directors reacted to the EEA's guidelines, here's a run-down on what's been spelled out. The guidance classifies sports into three categories — Lower Risk, Moderate Risk and Higher Risk. For the fall, Lower Risk sports include golf and cross country. Moderate Risk fall sports are volleyball, field hockey and soccer. Higher Risk fall sports are foot-

ball and competitive cheerleading.

Moderate Risk sports are listed as "sports or activities that involve intermittent close proximity or limited, incidental physical contact between participants." Higher Risk sports are listed as "sports or activities for which there is a requirement or a substantial likelihood of routine close and/or sustained proximity or deliberate physical contact between participants and a high probability that respiratory particles will be transmitted between participants."

The EEA guidance lists four levels of play. Level 1 is individual or socially distanced activities; Level 2 is competitive practices; Level 3 is games; and Level 4 is tournaments.

Lower Risk sports get the green light to participate in all four levels. That would enable golf and cross country to compete and hold tournaments. Moderate and High Risk sports can participate only in Level 1, which translates to no practices, games or tournaments. Those restrictions would be lifted if they meet "minimum mandatory standards for modification to play."

For soccer, field hockey, volleyball and football to practice, the following requirements are a must: Training activities must be performed in groups of 10 or less. These same groups must be used for every training session or class. Boundaries must be marked so that those groups remain at least 14 feet apart. No more than 25 people can be on a playing surface at once. Groups can only compete against each other if they remain separate and no contact occurs.

For soccer, field hockey, volleyball and football to compete in games, two criteria must be followed. First, deliberate close contact must be eliminated. Deliberate close contact includes but is not limited to collisions, body checking, tackling, blocking, and racing/riding in packs. Second, minimize intermittent contact. Game situations that result in in-

termittent, close physical or face-to-face contact must be modified or eliminated, including restarts, faceoffs, throw-ins, scrums for the ball/puck, or similar activities. These activities may be allowed if face masks are used during contact.

Tom Angelo, Franklin High's AD, is concerned about overreaction. "Too many people are jumping to too many conclusions without hearing from all governing bodies," said Angelo, who has 36 years of experience as an educator. "Whatever is decided, Franklin High School will be prepared to provide our student-athletes with a safe environment, by adhering strictly to the proper protocols established by our own school district, the EEA, DESE, MIAA and the Hockomock League."

Chuck Grant, who's been Millis High's AD for the last 18 years, emphasizes that it's not time to panic.

"No decision has been made on whether fall sports will be canceled," Grant said. "We're still hanging in. Other guidelines were issued in July but these regulations focus "on more elaboration and more concerns."

"There's still time for the virus numbers to trend downward," Grant noted. "There's still a lot of data that can be looked at. My hope for Millis and the surrounding towns is that we give fall sports a try, and that includes football. We'll all deal with the changes needed to minimize the spread of COVID-19. The EEA's guidance was issued a month before pre-season practice would start (Sept. 14). A lot can still change."

Gary Brown, King Philip's AD who previously worked as an associate AD at Harvard University, says many of the sports offerings for the fall at the regional school remain intact.

"As of now, we're planning on offering as many sports opportunities as possible for the fall, and that includes football, soccer, field hockey and volleyball," Brown said. "Our goal is to offer the best student-athlete experience while



GARY BROWN
King Philip Regional AD



TOM ANGELO
Franklin High AD

keeping health and wellness as our top priorities. Athletics continue to help student-athletes physically and mentally while competing in high school sports."

Brown emphasized that while athletics are an important element in youth development, "the big picture is still the health and safety of our students, families, communities, our state and nation."

Matt Baker, who's in his sixth year as Holliston's AD, is concerned the EEA's guidance clouds the fall sports picture because other agencies haven't weighed in.

"When I first heard there was guidance regarding athletics, my hope was it would start to give us some clarity regarding high school sports," said Baker, who previously worked in athletic administration at Framingham State. "I was inundated with calls, texts and emails. There was a lot of information everyone was trying to process and what it meant for high school sports. But as it turns out, this is just one set of guidelines being released by the state. We're still awaiting additional guidance from DESE and the MIAA and until then we're still in a holding pattern."



Attention Runners!!

Looking for rehab with professionals who understand the movement demands of your sport?

Let us help you get back to the sport you love sooner!

PLATINUM
PHYSICAL THERAPY

Call to schedule an appointment today:
508-881-6750

15 West Union Street, Ashland
1 Lumber Street, Suite 201, Hopkinton 196 E. Main Street (in Gold's Gym), Milford
www.platinumptma.com

India Independence Day Celebration

Ashland Indians, in collaboration with the Town of Ashland and the India Association of Greater Boston (IAGB), hosted an event on the morning of Aug. 15 to celebrate India's 74th Independence Day. A national holiday in India, it is a significant day for Indians all around the globe. Indians celebrate by hoisting the flag in public places and distributing sweets. "This is the first time the Indian tricolor flag was raised at the Ashland town hall. It is significant not only in acknowledging the Indian community's presence in the town but also it serves to represent the town's inclusive approach to various nationalities and ethnicities that form the community. (Photo/Vijay Subramanian)



Kilkelly MASONRY

OVER 40 YEARS EXPERIENCE!

Brick | Block and Stone | Walls | Walks | Steps
Patios | Chimneys and Veneers



FREE ESTIMATES!

Call **508-328-0210**

Grow Your Business with Local Advertising



For only **\$75 per month** your ad can reach
over **7,000 people** in Ashland!

Increase your revenue today! Contact Jen Schofield at 508-570-6544 or jenschofield@localtownpages.com to develop an advertising strategy for your budget.

localtownpages



Photos/G&B Photography, www.grynnandbarrett.com

Place your Holiday Inserts today!
 Contact Jen for Pricing and Reservations:
 508 570 6544 or email: jenschofield@localtownpages.com

ASHLAND FAMILY EYECARE

- Adult & Pediatric Eye Exams
- Contact Lens Fittings
- Medical Eye Conditions & Urgent Care

Whether remote or in-person, they need clear vision!
 Schedule your child's exam today!




contact@ashlandfamilyeye.com

25 West Union Street
 Ashland, MA
 (508) 928-7300

ashlandfamilyeye.com

Dr. Lauren LaPaglia
 Optometrist

THE LEDGES
 One Robert Hill Way
 Ashland

Occupancy Late Fall 2020... 62+ Community





WELCOME HOME TO THE LEDGES
EXPLORE THE POSSIBILITIES

Now Accepting Applications

COMMUNITY HIGHLIGHTS

- Open and airy living spaces with abundant natural light
- Sleek custom kitchens
- Fitness center
- Lounge retreat with shuffleboard, fireplace & crafting area
- Laundry care center
- On-site parking
- Smoke free community
- On-site management & 24-hour emergency maintenance
- Pet friendly (restrictions apply)
- On-site resident services and activities
- Near parks and walking trails

RENTS & INCOME LIMITS:

Type	# of Apts.	Gross Rent	Income Limit
1BR	24	\$1,440	60%
1BR	24	\$1,200	50%
1BR	1	**	50%
1BR	15	**	30%

**Rent determined by PHA based on income of applicant.

#HH	30% AMI	50% AMI	60% AMI
1	\$26,850	\$44,800	\$53,760
2	\$30,700	\$51,200	\$61,440

AMI - Area Median Income as of 4/1/20. Income, asset & use restrictions apply. Preference for current residents and current employees of the Town of Ashland. Rents, Income limits & utility allowances based on HUD guidelines. Photos and images may vary from actual apartments. Pricing, availability and information contained herein subject to change without notice. For more info, language assistance, or reasonable accommodations for persons with disabilities, please call or email.

The Ledges, One Robert Hill Way, Ashland, MA
 781.664.4029 | LedgesAshland.com




A Community Built on Safety

We remain committed to safe, quality care as always, and we want you to feel confident coming to our hospital. We take precautions to separate COVID-19 patients and ensure a safe environment for treating non-COVID-19 emergencies, chronic conditions and new or worsening symptoms.

Commitment from our hospital staff

We understand that you may be concerned about COVID-19 when coming to the hospital. Rest assured, our staff is taking every precaution to keep you and your

loved ones safe.

- Evaluating patients and teams when entering the hospital
- Keeping potential COVID-19 patients separated from other patients
- Increasing precautions for infection prevention
- Pre-screening patients with scheduled care multiple times as well as day of the care
- Providing access to testing with quick turnaround for patients that meet COVID-19 testing criteria

- Training staff with timely safety measures
- Wearing masks and other protective gear to prevent contact and spread of germs

When to come to the ER

Please – don't delay care if you or a loved one have symptoms that are best evaluated in an emergency room, which may include:

- Broken bones and dislocated joints
- Chest pains
- Concussion/fainting
- Confusion/change in mental state
- Digestive problems, especially sudden, severe stomach pain, coupled with nausea and vomiting
- Facial lacerations
- Fever with a rash
- Head or eye injury
- Intense back pain with numbness, weakness and fever

- Muscle strain, when tied to the inability to walk, fever or an open wound
- Seizures
- Serious burns
- Severe cuts that may require stitches
- Severe non-COVID-19 cold or flu symptoms
- Shortness of breath
- Vaginal bleeding with pregnancy

Signs of a heart attack

- Chest pain or discomfort
- Upper body discomfort, such as arms, back, neck, jaw or stomach
- Difficulty breathing
- Cold sweat, nausea, lightheaded
- Especially for women – difficulty breathing, nausea/vomiting, back or jaw pain

Signs of a stroke

- B – Balance – Is there a loss of balance, coordination or trouble walking?
- E – Eyes – Is it difficult to see in one or both eyes?
- F – Face – When the person smiles, does one side of the face droop?
- A – Arms – Does one arm drift down when the person raises both arms?
- S – Speech – Is speech strange or slurred?
- T – Time – Don't wait to call 9-1-1 if you see any of the above signs

When to call 911

Call 911 for an ambulance for certain emergencies such as a heart attack or stroke. Paramedics can often begin delivering life-saving treatment on the way to the hospital. Also call 911 if you're unsure whether to drive yourself. Your safety is our highest priority.

PREMIER IMAGE GALLERY

- ◆ Specializing in Museum Quality Framing
- ◆ Finest Selection of Original Artwork by Local Artists



Celebrating 30 Years as a family owned business

290 Eliot Street, (Ledgemere Plaza) • Ashland • (508) 881-4730

 www.premier-image.com



AshlandBusinessAssociation.com

BUY LOCAL

#SHOPABA

- ◆ 126 Self Storage
- ◆ AdvCoach, Ken Erdelt
- ◆ Ashland Pet Concierge
- ◆ Habitat for Humanity
- ◆ Happy Tails Dog Walking
- ◆ Marie Kitchen, Century 21 Realtor
- ◆ Metro West Bookkeeping & Tax Service Inc
- ◆ Modelville Hobby
- ◆ Protegro Inc., Wendy Pyne


@ASHLANDBUSINESSASSOCIATION

Place your Holiday Inserts today!

Contact Jen for Pricing and Reservations:

508-570-6544 or

email: jenschofield@localtownpages.com



The Smart Call for Heating & Cooling




Great Rebates & Financing* 888-818-2028

Call today and beat the rush!

Gas, Oil and AC Equipment Sales & Service

*Rebates and financing provided by and subject to Mass Save restrictions and limitations

Town-wide Cleanup Set for First Weekend in October

By CYNTHIA WHITTY

The GreenUp Ashland annual town-wide cleanup, usually held the first Saturday in May, was changed, due to the pandemic, to the first weekend in October this year. To participate, individuals, families and organizations should register online. The GreenUp group will deliver trash bags to participants.

For information as it becomes available, visit www.greenupashland.org and www.facebook.com/GreenUpAshland.

GreenUp Ashland has a variety of activities available for high school students who need community hours. Activities include:



community service administration (assist in management of hours/signups/activities); newsletter work; social media (Instagram launch and updating). For information, students may email info@greenupashland.org.

GreenUp Ashland and the community are grateful for the many residents who adopted streets this year who are helping to keep the community clean and free of debris. To adopt a street, register online, www.greenupashland.org/adopt-a-street-signup.

Guess What May Be Coming Back

Though it never went away in Massachusetts, the last few years have been a respite from worry over federal estate taxes. That may soon come to an end. The government may be trying to get their hands into your and your loved ones' pockets again -- and in a VERY BIG way!

We can't predict who will win in November and which party (or parties) will control the Presidency, Senate, and House. But we do need to let you know what may happen if Democrats wind up winning the Presidency and having a majority in the House and Senate, an event which is looking increasingly likely according to recent polls. Dennis Sullivan & Associates is not taking a political stand, we're a diverse and divided office politically, but we do want to discuss how taxes may change, and what actions can be taken now, so please don't shoot the messenger!

Democrats and media have raised significant issues about the wealth and income inequality rampant in our country. One solution for this inequality, now being expressed more vocally, is a major overhaul of the federal estate tax. For example, here's an article that appeared this summer in the New York Times, entitled "Tax the Rich and Their Heirs."

The current Estate Tax exemption, the amount that can be passed at death tax-free, is \$11.58 million (potentially twice that for a married couple). In short, very few people in the US need to worry about federal estate taxes.

In Massachusetts, we have an estate tax exemption of \$1 Mil-

lion dollars. If you are married, there is no automatic doubling of the exemption, but it is possible with planning to double the amount to \$2 Million for a married couple.

However, as the cited article recommends, that exemption may be significantly reduced at any time. While the current exemption is \$11.58 Million, if it changes before you die, that is the exemption that applies to you. The only exemption that counts is the one in the law when you pass away -- and a new Congress and President could change that. There have already been calls to reduce the Estate Tax exemption to as little as \$1 million, with everything over that taxed at 40% or more, which would place many Massachusetts homeowners' families at risk of owing federal estate taxes!

niques, beyond a Living Trust, that you can use now to take advantage of the current large Estate Tax exemption while it's still in the law. Dennis Sullivan & Associates can help.

If you wait until the November election, there may not be enough time before year end to analyze your options and properly put into place the appropriate strategies. You may want to do some "pre-planning" now, make your choices ahead of the election and be ready to implement them right away after election day.

Don't wait until next year. It's likely that any Estate Tax change is likely to be made effective retroactively to January 1! Don't see your planning opportunities dry up.

Call our office for a free consultation. Don't wait, review your estate tax planning options now! Call 781-237-2815 to learn more!

What Can You Do? Why Do It Now, Why NOT Wait Until November?

There are planning tech-



Masked adopter picks up litter in the downtown area. (Photo/supplied)



THE ESTATE PLANNING & ASSET PROTECTION LAW CENTER OF
DENNIS SULLIVAN & ASSOCIATES
LIFETIME PROTECTION FOR YOUR FAMILY

HELPING PEOPLE PROTECT THEIR SPOUSE, HOME, FAMILY, LEGACY AND LIFE SAVINGS FOR OVER 26 YEARS



SIMPLE PLANNING WILL PREVENT

- Time & money wasted on probate
- The government controlling decisions for your family
- Public exposure of your personal affairs
- Losing your life savings to nursing home costs

MAKE INFORMED DECISIONS BASED ON EXPERIENCED ADVICE. CALL 781-237-2815 TO SCHEDULE A FREE CONSULTATION.

- Trust & Estate Planning
- Elder Law & Medicaid
- Probate & Trust Administration



781-237-2815
www.DSullivan.com



FALL SPECIAL!



McINTYRE
LOAM, INC.

Call us today for a spectacular deal on Screened Loam, Loam/Compost, Loam/Sand or Compost! Get 25% off the retail price of the material beginning 8/31/20.

Special Pricing on C.O.D. orders only



117 Wood Street, Hopkinton • 508-435-5376
www.mcintyreloam.com

Circle of Love Artwork Installed Around Town

BY CYNTHIA WHITTY

“01721 Circle of Love” art project, which began in May and runs until the end of the year, encourages Ashland residents and business owners to fill in 8-inch circles with artwork. “This project was designed during the community’s isolation during the COVID-10 pandemic to use art as the engine that brings us together and envelopes Ashland in a Circle of Love,” Ashley Place, town communications and cultural coordinator, said.

The 01721 Circle of Love committee, made up of town

staff (Ashley Place, Beth Reynolds) and community members (Visi Tilak, Amy Caruso), have received circles from individuals of all ages and from families. Circles are decorated with different mediums: paint, stickers, ribbon, and colored pencil. The first installation of artwork is now displayed on the first floor of the town hall; appointments are currently needed to enter the building. The committee also hopes to have installations at the public library and the Ashland High School and possibly at storefronts.

For more information, visit www.facebook.com/01721circleoflove. To participate in this project, pick up or download your 8-inch circle template at The Corner Spot and start designing. Drop off your circle at The Corner Spot, or mail it to Town Hall, attn. Economic Development/Ashley Place, 101 Main St., Ashland, MA 01721.



Artwork from the Circle of Love project will be installed in buildings around town. (Photo/supplied)

Ashland Lions September News



Ashland Lions Yard Sale

Ashland Lions Club will hold its annual yard sale on Saturday, September 19th, from 8am until 2pm. The event will take place at 99 Pleasant Street in Ashland. Items for sale will include furniture, household goods, useful items, books, toys and games, etc., all at reasonable prices. All proceeds will benefit Eye Research and local charities We hope to see you there!

Ashland Lions are still here!

Even though we aren't all together right now, we are still here and want everyone to stay safe and in good spirits. Lion Dok has done a fantastic job of reminding the community that we'll get through these times together by posting motivational words on the Ashland Lions sign near Lucky Farm. Keep an eye out for it when you drive by.

Whodunnit? Murder In Sin City

The Ashland Lions Club is teaming up with Lions Clubs in Sherborn and Bellingham mystery dinner. The event has been moved to Saturday, April 17th, 2021, 6:30pm-11:00pm. Participants will be assigned a role to play in solving a murder mystery! The event will be held at the VFW, 311 Pleasant St, Ashland. Tickets are available for \$35 on Eventbrite.com under “Murder in Sin City”, or call Lion Eileen at 508-861-3226. Ticket price includes admission and an appetizer buffet. There will also be a cash bar, raffles and prizes. Currently only 150 tickets will be sold (this number subject to reduction as guidelines change for social distancing). All proceeds will benefit local hosting Lions Club charities.

Stay up-to-date on Lions happenings

To see the latest status of our events, please visit our Ashland Lions Facebook page. Click the Like button and you will be automatically notified of changes or cancellations.

Lion Dan Mitchell





Timothy Daniels House





Exceptional Short-Term Rehab & Skilled Nursing Care

- ◆ Physician on Site
- ◆ Short Term Rehab
- ◆ Physical Therapists On Site
- ◆ 24 Hr Nursing Coverage
- ◆ Respite Stays Welcome
- ◆ Hospice Services

(508)429-4566

84 Elm Street, Holliston, MA

www.rehabassociates.com/timothydaniels





Our Ad & Editorial Deadline is the 15th of each month, for the following month's issue.

Real Estate Corner

Public Safety Building Update

BY ASHLEY PLACE

On August 4, the Public Safety Building Committee presented a public forum unveiling the plans for the proposed new safety building housing both our police and fire departments. Held virtually, Town Manager, Michael Herbert, Assistant Town Manager, Jenn Ball, Select Board Member, Joe Magnani, HKT Architects, Janet Slemenda, and consultant, Amy Archer presented the new building's plans.

The presentation began with images of the current police and fire department buildings with each the Police Chief, Vin Alfano, and Fire Chief, Keith Robie, identifying hazardous conditions in each location, and voicing concerns regarding their current arrangement. Each building interrupts the daily function of each Fire Fighter and each Police Officer. Alfano pointed out the police's booking room highlighting the safety concerns between the detainee and Police officer in this small room crammed with office equipment, including a pointed-ended filing cabinet. Robie highlighted each apparatus is custom built (at greater cost) to fit in the bays of each the Main Street and Cedar Street Fire Stations. Both Chiefs mentioned the added costs for running these inadequate facilities including renting storage spaces, and renting training facilities for their staffs.

After deliberation between two worthy sites, The PSBC deemed E. Union Street as the best location. This property on

E. Union Street was gifted to the Town of Ashland from the Fafard Estate, and has underwent the ANR Process and Land Court Process, with the final step being the transference of the deed.

This location permits emergency vehicles to access the bridge avoiding access issues presented by the robust train schedule. The site does provide constraints including zoning setbacks, property line, topography, and wetlands.

The site is significantly setback from the street. There is public parking in the front and on the side of the building, with parking for staff and cruiser parking in the rear. The apparatus will exit from the northeastern portion of the site.

The site contains a three story building with ample space for the apparatus bay. The first floor plan consists of a main public entrance with lobby, the dispatch, records and meeting room, an elevator, space for police operations including- Sally Port and detention center, alongside fire apparatus and fire support areas.

The second floor plan includes police support areas including locker rooms. Additionally, the second floor includes fire fighter's living quarters, a shared gym, a training room, and reserved space for Mechanical Electric systems, and space for a green roof.

The third floor is reserved for both administration for both police and fire, access to the green roof, and a solar ready roof.

The PSBC consulted with the Sustainability Committee through the entire building pro-

cess. The new building features low flow plumbing fixtures, a geothermal HVAC system, electric vehicle charging stations, and the roof is ready to support solar panels.

The design development estimates the budget for required funding totals \$33,204,153. To fund the proposed project, Town Manager Michael Herbert has proposed paying for almost half the project within the existing tax levy. This would reduce the amount needed to be raised through a Proposition 2.5 debt exclusion vote. The estimated excluded debt portion for taxpayers totals \$147 for the average home.

Having one public safety building benefits the town, lowering expenses for two different locations. The current fire station on Main Street was constructed in 1928 and refurbished in 1992. The Police Station is rented on 91 Main Street for roughly \$30,000 annually. These current buildings can then be reused or redeveloped. For example, the Main Street Fire Station could make an excellent restaurant or brewery as has been done in other towns.

The next steps for the project include a third-party estimate of costs, the development of Construction Design documents, and another third-party estimate of costs. From there, the project will enter the bidding process. The bids then would be presented at Special Town Meeting and Special Town Election.

"In this effort, the committee has modernized and has reduced yearly costs to the taxpayers of

Ashland. This committee has worked with both Chiefs and their personnel, to assist our architects in creating a combined public police and fire department complex to meet the today's current needs for each department and for the next fifty years, while achieving Ashland's long term goal and Ashland's commitment

to a net zero and a sustainable building committed to the great innovative," Select Board Member, Joe Magnani.

If you have not already viewed this presentation, you can watch the forum on WACA TV's YouTube Channel <https://bit.ly/3kCJQv4>.

ASHLAND'S MOST SOUGHT AFTER 55+
COMMUNITY
RARE PRIVATE SETTING

www.80Braeburn.com



PREMIER
REAL ESTATE TEAM
TRACY BEAUDOIN & JUDI TELLER

For your private showing:

Judi Teller

508-380-1933



Bill Gath
Sales & Rentals

Direct: 508.989.0181
Fax: 508.744.6991

10 West Central Street
Natick, MA 01760

Email: BillGath@gmail.com

Web: www.BillGath.com



**WANT YOUR PERFECT PROPERTY
To COME To You?**

Visit www.BillGath.com
On the top right click "New Listing Email Alerts"

- ✓ Receive daily emails of new listings in your criteria.
 - ✓ Select up to 5 towns per email address
 - ✓ Change your search criteria at anytime.
 - ✓ Property information and pictures right to your inbox.
- Call: 508.989.0181 Email: BillGath@gmail.com

Place your Holiaday Inserts today!

Contact Jen for Pricing and Reservations:

508-570-6544 or

email: jenschofield@localtownpages.com

Real Estate Corner

Buying or selling? Keep it local with Cordaville Realty

BY SUSAN MANNING
STAFF WRITER

Jen Paratore likes to provide a personal experience when it comes to real estate.

The Ashland entrepreneur lives in town with her husband, also a small business owner, and is celebrating her company's — Cordaville Realty— grand opening.

"I have an affinity for small business. We are a family of entrepreneurs, my husband is a small business owner himself, so we understand how important it is to shop locally. As a company, Cordaville Realty has made it a priority to partner with other locally-owned businesses and service providers," she said.

Paratore, who has been a top-producing real estate agent since 2012, with a focus on Ashland and MetroWest, has always wanted to own her own business.

"I've always had an entrepreneurial spirit and knew I wanted to open my own real estate bro-

kerage here in Ashland. After years of working for larger real estate companies, I realized that the best way I could continue serving my clients was as an independent brokerage so I created Cordaville Realty," she explained. "Being independent allows us the ability to adopt the newest real estate marketing strategies and easily implement them on a company-wide level. It also gives us the flexibility to think outside the box and get creative for our clients.

One example of that is a recent collaboration the company created.

"We just partnered up with a local interior decorator to provide our buyer-clients with a virtual design consultation after closing," she said.

Cordaville Realty will help you with buying a property, selling a property, or leasing.

If you're trying to sell your property, let Cordaville Realty use its cutting-edge marketing

Business spotlight

techniques to sell your home as quickly as possible, for the highest price possible. You will have professional photography, 3-D virtual tours, custom floorplans and interactive digital brochures, among others.

And don't worry about too much contact with too many people. They have that covered, too. Standard virtual services include: documents signed virtually with e-signatures; virtual showings and open houses; deposit checks securely collected electronically.

If you're buying a property with Cordaville Realty, you can expect the same personal touch. Its agents are experts in the Massachusetts real estate market. In addition to their extensive off-market network, they utilize



Cordaville Realty's — personal touch!

"I think one of the biggest things that set Cordaville Realty apart from our competition is our communication and personalized customer service. In my opinion that is the single most important aspect of any real estate sale. Whether a client is selling their home or purchasing one, having an agent who is able to explain the process and provide expert insight into the current market makes all the difference. This type of concierge-style customer service is what I built my career and reputation on. It's standard practice here at Cordaville Realty," she said.

For more information or to be in touch with Paratore, visit cordaville.com; email jen@cordaville.com; or phone 617-974-7079. Hours of operation are Monday through Friday, 8 AM to 6 PM; and Saturday and Sunday, 10 AM to 4 PM.

the MLS service to provide you access to every available property in Massachusetts. Your agent will work with you to create a customized property search, coordinate showings, negotiate the best value and facilitate inspections.

They are also well-connected and can help you source mortgage consultants, closing attorneys, insurance brokers, movers, designers, contractors, and more.

But why go local when there are bigger firms? Paratore's— and



Jen Paratore
Broker Owner

Sell your home with Cordaville Realty Ashland's full-service real estate company!

- Local market expertise
- Property videos
- 3D virtual tours
- Professional photography

Let's get moving

Jen@cordaville.com

Cordaville.com

617.974.7079