

Commitment to the Community

As a young girl, needing assistance from the community was a very real part of Heather Cohen's childhood. Many times, her family had to rely on community programs and the generosity of neighbors to make ends meet.

"I remember going with my mother to our church to pick up meals and clothing. That experience stuck with me, and not because I felt ashamed or embarrassed. It was just the opposite, in fact! Everyone who helped us was so supportive and kind, it instilled in me a sense of community and inspired me in my commitment to give back."

Heather owns b.LUXE Hair and Makeup Studio, a brand new, 4000 sq ft beauty salon housed in the historic Medway Mills Complex. With soaring ceilings, natural light-filled rooms and the



Photo Credit: Wendy Shea Photography

areas most current and exciting salon services, b.LUXE is one of Metrowest's most impressive beauty destinations.

But just last year, all plans for the new studio were put on hold. Heather explains, "When we first shut-down, my initial mindset was to scrap the build-out and hunker down

in our existing space. It was a tough time for all of us in the beauty industry. But, later, when we returned to work, there was a very different landscape waiting for us. My staff had to split shifts and reduce

B.LUXE

continued on page 3

Meet the Candidates: Ashland Votes on May 18

By CYNTHIA WHITTY

Ashland town elections will be held on Tuesday, May 18, 7 a.m. to 8 p.m. at the Ashland High School, 65 East Union St. (This year annual town meeting is scheduled for June 12.) For up-to-date information, visit www.ashlandmass.com/219/Elections-Voting.

This year three candidates – Yolanda Greaves, Pam McQuillan, and Rob Scherer – are running for two seats on the Select Board, and three – Kathy Bates, Christina Fitanides, and Marc Terry – are running for two seats on the School Committee.

Candidates running for uncontested seats are Steve Greenberg for Board of Assessors; Claire Goss and Linda Weene for Library Trustees; Bernadette Lunkuse, Koduvayur Narayana and Barbara Sekesogundu-Simon for Board of Health; Carolyn Beaton for Housing Au-

thority; and Anna Tesmenitsky and Deepa Venkat for Planning Board.

Ashland Local Town Pages asked the candidates for the Select Board and School Committee contested seats the following questions: Why are you running for office? What qualifies you? What do you hope to accomplish if elected? Read their responses here.

Select Board

Yolanda Greaves

Hello, my name is Yolanda Greaves. I am running for re-election to the Ashland Select Board, and with your vote will continue to serve the town of Ashland for another three years.

During my nine-year tenure I have served in various roles on the board, including three years

CANDIDATES

continued on page 2

SHAHOOD & SONS

INC

PLUMBING - HEATING - COOLING

Residential Commercial Industrial

It's Time to Check Your AC Prepare for Summer!

We offer AC Repair, Maintenance and Installation

10% OFF
AC Maintenance,
Cleaning & Repair

Offer expires 9/30/21.
Not combinable with any other offers.

\$300 OFF
NEW
AC System

Offer expires 9/30/21.
Not combinable with any other offers.

We offer 0% interest for 7 years under Mass Save.

**Service Work • Repairs • Boilers
Water Heaters • Remodeling • New Construction
Air Conditioning • Heat Pumps • Mini-Splits**

Fully licensed and insured

Contact us today!

508-875-3413 • ShahoodPlumbing.com

Want to sell but have
no idea how you will
ever make it happen?

Let me answer that
question for you!

AMY ULISS
MDM Realty

963 WORCESTER ROAD
FRAMINGHAM

508-341-1422



mdmrealtyinc@gmail.com

COMING SOON

ASHLAND

NEW CONSTRUCTION

PREMIER REAL ESTATE TEAM

Contact us for details



TRACY BEAUDOIN & JUDI TELLER

PremierResultsTeam.com

508.380.9296 | 508.380.1933

premierresultsteam@gmail.com



100% Club

CANDIDATES

continued from page 1

as Chair. I have focused on transportation and infrastructure projects and worked with the board to improve communication and board interaction with residents. I represent the town in various regional organizations and committees.



I have championed the Rt. 126 project, helping to keep it on the TIP (Transportation Infrastructure

Program) and worked with town management and staff to ensure the project moved forward. After six-plus years of work, we are seeing the project beginning to take shape! This project will open up Rt. 126 for enhanced economic development and growth that will benefit Ashland. I look forward to working with the stakeholders of the corridor and the residents to create a master plan that will guide the growth of this area as

the project is completed.

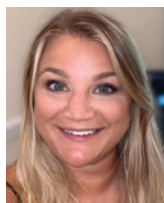
Should I get your vote and get re-elected, I look to help complete the following projects with resident input. The Valentine project, the downtown project, the Mindess building replacement project, the Public safety building, and conservation restrictions on various parcels the town owns.

I have lived in Ashland for 30+ years with my husband Rich. Outside of my volunteer work as a member of the Select Board, I manage the Finance and Human Resource department for a small software company. I work with dance and theater groups as a stage manager and production manager. My newest volunteer role is as a board member of the MetroWest Conference for Women for which I am currently the vice chair.

I really enjoy the work I do as a Select Board member. I have appreciated my time on the Ashland Select Board and working for the citizens of Ashland. I look forward to continuing projects I have helped start and continuing to work as a public servant for Ashland. Please give me your vote on May 18!

Pam McQuillan

When my family and I moved to Ashland, I intended to jump right into town politics as I had watched both my parents do. Growing up in Natick, my parents were always involved, from being Town Meeting



members to my father serving on the Finance Committee and now a current Selectmen. "It's in my blood" is something I genuinely believe.

My professional background has been focused on business operations and management within the legal industry. In early 2021, I resigned from my position to become a stay-at-home mom to my three children, a kindergartener at Warren, a preschooler at Pittaway, and a toddler. My passion is volunteerism, and I currently volunteer as a member of the Pittaway Preschool PTO and the Pittaway/Warren Site Council.

Something about living through a pandemic gave me the jumpstart I needed to begin my journey serving our community. I watched our Ashland Facebook threads and started asking questions. I reviewed Town Meeting minutes, watched our Select Board meetings, and I found that while our community leaders work hard to make tough choices there seemed to be a lack of overall community support.

Some of the reasons I am running for Select Board are to ensure equity in response to all Ashland residents' concerns or inquiries, increased online access to information, and transparency in decision making. I intend to be a voice for the citizens of Ashland and bring their concerns directly to the Select Board, whether presented to me through a Facebook message board, email or even a handwritten letter.

I believe I can be an ally for our current Select Board members and an advocate for all the

members of our community – from children attending our schools to those served by the Council on Aging and the Senior Center.

I believe it is time for a new voice on Ashland's Select Board. I love Ashland and see great potential in our town. My vision for Ashland includes our community connecting with modernized communication to improve the dialogue between our town government and the residents we serve.

Rob Scherer

I believe that serving on the Select Board provides a unique opportunity to contribute to the well-being of our community.



My background is in non-profit and government finance and administration. I have an MBA from University of Massachusetts, and serve as the Chief Financial Officer at Worcester Community Action Council.

When I campaigned for Select Board in 2015, I spoke of the need to create a cohesive vision for our community that would preserve the best of our past, build a sustainable future and focus on the quality of life in our community. I pledged to work to build a strong financial base to provide the services our community needs.

Since then we have made a great deal of progress, building our reserve funds, protecting key open spaces and historic sites,

and embarking on key projects. These projects include: the new Public Safety Building, the Mindess School replacement, the Rt. 126 renewal, and the downtown project.

In this unprecedented year, we have also been able to provide financial and regulatory support to residents and businesses impacted by the Covid-19 pandemic. We continue to build affordable housing using our Housing Production Plan, a key tool to maintain control over proposed "40B" housing projects. This summer, we will break ground on the first segment of the Ashland Upper Charles Trail, the "Trolley Brook" segment connecting Memorial Drive to downtown.

Ashland continues to provide very good value to the taxpayers. Our per capita expenditures for municipal services remain one of the lowest in Metrowest.

Looking ahead, I continue to be concerned with the potential impact on our community of the Eversource Pipeline expansion project, including its role in increasing greenhouse gases and accelerating climate change. I am pleased that Town officials, with key assistance from residents, have successfully opposed this project and insisted that key questions must be addressed. We must continue our sustainability efforts by passing and implementing a Net Zero plan for 2040, and hold Eversource accountable.

I am running for re-election to continue the progress we have been making as a community,

CANDIDATES

continued on page 5

localtownpages

Published Monthly
Mailed FREE to the
Community of Ashland
Circulation: 7,884
households & businesses

Publisher

Chuck Tashjian

Editorial

Susan Manning

Send Editorial to:

editor@ashlandtownnews.com

Advertising Director

Kathy Benoit

Advertising Sales Manager

Jen Schofield

508-570-6544

jenschofield@localtownpages.com

Multi Media Sales Consultant

Jeremy Wardwell

413-204-5296

jeremywardwell@localtownpages.com

Creative Design & Layout

Michelle McSherry

Kim Vasseur

Ad deadline is the
15th of each month.

Localtownpages assumes
no financial liability for errors
or omissions in printed
advertising and reserves the
right to reject/edit advertising
or editorial submissions.

© Copyright 2021 LocalTownPages

Looking for a
New Dry Cleaners?

Due to the pandemic we have seen other dry cleaners close.

We are OPEN and ready to serve you!

Curbside Service Available

Hiller's
Cleaners

Dry & Wet Cleaning • Shirt Laundry • Tailoring & Alterations

All work done on premises • Over 30 years experience

Quality & Service Always Come First

63 Main Street, Hopkinton • Next to CVS
508.435.3880 www.HillersCleaners.com
2nd location: 3 Main Street, Southboro



MONEY-SAVING COUPON!

CBD
ReLeaf Center
98A Main Street
Medway, MA 02053
508-533-4025

MENTION THIS AD & RECEIVE
10% OFF
your next purchase!

Limited time offer; not valid with any other offers.

CURBSIDE PICKUP OR YOU CAN COME IN!

HOURS:
MON - SAT,
10AM - 7PM;
SUNDAY,
11AM - 4PM

NOW OPEN

Original HEMP

www.cbdreleafmedway.com
cbdreleafmedway@gmail.com

508-533-4025
98A Main Street
Medway, MA 02053

Around Ashland Town News

BY CYNTHIA WHITTY

Regional Vaccination Clinic Appointments for Residents



The town announced on April 13 that it partnered with area communities to set up a Regional Covid-19 Vaccination Clinic at the Westborough Doubletree Hotel, 5400 Computer Dr. Ashland residents should sign up for the state's Preregistration System for Covid-19 vaccination appointments. The system will provide weekly status updates as to the availability of appointments. This preregistration system will include available appointments at the Westborough Regional Clinic site. For more information, visit the town website, bit.ly/3mIxZgi.

Oak Street Rain Garden: Volunteers Needed

Volunteers from the community are needed to complete the rain garden, adjacent to the Ashland Town Forest's new Oak Street entrance. Work started last summer with digging and grading and continued into the fall with tree and shrub planting. This project is sponsored by the Ashland Town Forest and Storm Water Advisory committees.

Volunteers are needed to help move soil in early May and plant beginning May 15 or May 21, depending on the weather. Volunteers will work at scheduled times to avoid crowding. Each team will plant one or two varieties of plants (100 to 200 plants) of the total 2,000 small plants. There are 17 different types of plants going in, all native, and many are butterfly or bee friendly. For questions and to volunteer, contact Mike Jones, Ashland Town Forest Committee, 414-399-0715, mikejonz352@gmail.com.

Senior Center Reopening, May 3

The Ashland Senior Center will reopen on May 3 with the

following restrictions: masks are required to enter the building; hands must be sanitized upon entering the building; pre-registration will be required for all scheduled programs; each person will need to check in and out at the front desk using the My Senior Center Kiosk; windows will be open in program rooms to maintain air circulation; all chairs and tables will be sanitized by staff as participants leave; and each participant should only stay in the building for 90 minutes.

Activities and programs will be inside dining on Mondays; dance and art classes; Tai Chi; and gardening. The center will maintain records for contact tracing purposes and will ensure that the rooms are disinfected. For more information, call 508-881-0140 or visit www.ashlandmass.com/172/Elder-Services.

Ashland Garden Club Plant Sale, May 8

Ashland Garden Club's annual plant sale will be held Saturday, May 8, 9 a.m. to 12 p.m., at 125 Front St., diagonally across from the Ashland library. Masks and social distancing will be required. Proceeds from the sale support the garden club programs and public plantings around town, including the post office, library and clock tower. For more information, visit www.ashlandgardenclub.com.

Ashland Education Foundation: Innovate to Educate Campaign



The Ashland Education Foundation (AEF), Inc. is a non-profit, volunteer, community-based organization dedicated to providing enhanced educational opportunities for students in the Ashland Public Schools. AEF does this through competitive innovation grants and school needs grants.

B.LUXE

continued from page 1

hours to accommodate the new safety guidelines. I knew right away they needed a bigger salon to work at full capacity and our clients needed a safe space to relax and enjoy their services."

A new plan began to unfold for the studio when Heather realized that the timing of the pandemic actually enabled her to build a socially distanced salon from the ground up.

"I had to pivot away from our original design and rethink every inch of space."

And pivot she did! b.LUXE Hair and Makeup now has 16 socially-distanced styling stations, 3 treatment rooms, multiple processing areas and a private service space for high-risk clients. They've also added a skincare department, organic tanning services and some of the most relaxing spa services around!

From concept to completion, the continuous thread that runs through this expansion is Heather's commitment to community.

A few of Heather's community contributions include free fundraising events for local organizations where the b.LUXE artists host beauty nights with 100% of ticket sales donated to the organization. These events have hosted 50 guests and raised



thousands of dollars.

Heather and her team also donate time to the Franklin Food Pantry, regularly volunteering at their food drives and back-to-school backpack programs.

Guests from The Franklin Senior center visit b.LUXE for free hair styling and grooming as well as the residents from The Medway House, who receive complimentary services whenever needed.

Every year, the b.LUXE team travels to Mexico to bring beauty supplies and cutting edge education to the Martello Institute of Beauty, Cancun. With each trip, Heather donates two full beauty scholarships to students, until last year, when the pandemic side-

Business spotlight

lined their travels, she donated three.

b.LUXE is also proud to work with The Hummingbird Foundation, Medway Parks and Rec, The Gilded Project and many other local groups and organizations.

Heather's philosophy is simple, "We all have it within ourselves to help others and improve our community. So, do your best... and then do a little better."

Your family. Your pet. Your favorite vacation spot.



Open any checking account at Milford Federal Bank, and receive a personalized debit card on us! Design your card to express what is important to you. All MFB Checking accounts include:

- ▶ Online Bill Pay
- ▶ eStatements
- ▶ Online & Mobile Banking
- ▶ Card Management



Stop by any branch to open your account, or visit MilfordFederal.com.

508.634.2500

* Provide promo code DC21 at account opening. Offer valid through 6/30/2021 for new checking account customers only. Terms and conditions apply.



Milford | Whitinsville | Woonsocket

TOWN NEWS
continued on page 6

Ashland Dog Park Enters Design and Construction Phase

By CYNTHIA WHITTY

The Ashland Dog Park Committee announced recently, that after five years of working on creating its Bark Park, the committee has obtained \$25,000 from the Stanton Foundation, which covers up to 100 percent of the costs of moving from a preliminary sketch of a dog park to bid-ready documents for a contractor. Design grants equal 10 percent of the estimated hard construction costs of a proposed project.

"After the design is complete, we move on to the construction phase," Cara Tirrell, committee organizer, said. "To be eligible for a construction grant, the design of the park must have been completed within 12 months of receiving design grant funds." Once the full plan and bid doc-

uments--"design documents"--have been prepared using the funds provided through the design grant, the next steps are:

The town submits design documents to the Foundation for design review.

Once design documents are approved by the Foundation, the town selects a contractor.

The town submits a financial statement to the Foundation demonstrating that the town's 10 percent financial commitment is immediately available for payment to the contractor.

The Foundation reviews and approves the contractor selected by the town.

The town and the Foundation sign the final memorandum of understanding (MOU).

The Foundation provides a

cash grant equal to 90 percent of the bid selected.

The Ashland Bark Park will be located on two acres known as Parcel #13-138 on Memorial Drive (previously known as the MBTA access road). The future Bark Park will be on the right side of the street nestled between the future YMCA on the left and Upper Charles Rail Trail.

"We need to raise \$15,000+ to cover the Stanton Foundation's requirement of community contributed funds," Tirrell said. "We are holding a spring fundraiser on May 8, rain date May 15, at The Corner Spot from 9

a.m. to 2 p.m. We welcome well-behaved leashed dogs who can be around food, children, loud noises and other dogs! All dog owners are expected to clean up after their dogs."

Tirrell notes, that in addition to attending the fundraiser, there are many ways to support the Bark Park: checks payable to Ashland Bark Park, 3 Hilldale Rd., Ashland, 01721; PayPal: www.paypal.me/AshlandDogPark; and venmo: @Ashland-Dog-park. Donations are tax-deductible. For more information, visit www.ashlanddogpark.com or email AshlandDPC@gmail.com.

COME JOIN OUR SPRING FUNDRAISING EVENT

Bring your PUP for Family Fun Day!

at The Corner Spot

Hosted by: The Ashland Bark Park Committee

Saturday, May 8th | 9:00am - 2:00pm

Pet Photos, Food, Treats, Games, Baskets to win & more...

Jeff Troutman Photography by Emily Reilly

DORAGON RAMEN

ASHLAND NUTRITION

girlscouts

Crazed Mom Candle Co.

Burning the wick @ both ends

Rain Date: May 15th

WE WELCOME ALL WELL-BEHAVED DOGS ON LEASHES!!!

Weatherproof Your Outdoor Furniture: By John Szolomayer, RE/MAX Executive Realty

If you want to buy a home with ample outdoor space for entertaining, there are additional considerations. Not only do you want shelter from the weather, but you need to make sure the furniture you have outside can withstand the elements. What are

some weatherproof outdoor furniture options that are both comfortable and practical? Let's take a closer look.

Metal

Metal chairs and tables for outdoor entertaining have some

advantages. They don't retain moisture, so they are easy to dry and use in all weather conditions. However, depending on the finish, they can be susceptible to rust. You can maintain their quality by sealing them.

Wood

Many people like the look and functionality of wood. However, the wrong kind of wood can rot or weather. Seal your wood furniture and use woods that are intended for outdoor use, such as treated wood or composite lumber.

Wicker

Another popular choice is wicker furniture. It is usually paired with outdoor cushions to increase comfort. We will discuss upholstery options below. Wicker is durable, sustainable and easy to use outside.

Plastic

Plastic is another choice because of its durability. It can be cleaned easily and kept dry. However, if your concern is sustainability, other materials are more environmentally friendly than plastic.

Upholstery

If you choose to use cushions to make your outdoor space more comfortable, make sure they are covered in a waterproof or weatherproof material. However, if your cushions are exposed to heavy rain, they may still become wet or waterlogged, which can lead to mold. You may wish to store cushions indoors or in a weatherproof bin.

Information provided by John Szolomayer from RE/MAX Executive Realty. Each office is independently owned and operated. John can be reached for more information at 508.259.4788 or JohnSzolomayer.com

**Let My 17 Years Of Experience
Help You With your Next Move**



Experienced - Trustworthy - Professional

John Szolomayer (508) 259-4788

Ashland resident for over 25 years

**Now is the time to Contact me for a
Complimentary, No Obligation
Market Analysis on Your Home.**

JohnSzolomayer@gmail.com
www.JohnSzolomayer.com



**The Smart Call for
Heating & Cooling**

COAN

MITSUBISHI ELECTRIC
HEATING & AIR CONDITIONING

Great Rebates & Financing* **888-818-2028**

Call today and beat the rush!

Gas, Oil and AC Equipment Sales & Service

*Rebates and financing provided by and subject to Mass Save restrictions and limitations

CANDIDATES

continued from page 2

and to continue my work on these key projects. I would be honored to have your support.

School Committee

Kathy Bates

Hello residents of Ashland! My name is Kathy Bates and I am running for re-election to the Ashland School Committee.



I have lived in Ashland my entire married life of 29 years with my husband Wayne who grew up here. My three sons all attended Ashland Public Schools from preschool to graduating from Ashland High School and continuing on to college. I am a graphic designer, working part-time for Mass Audubon helping to produce wayfinding signage which combines my love of graphics with my love of conservation and protecting the environment.

Since moving to Ashland, I have been involved with our town, attending town meetings, volunteering and participating in various town events, and taking on an official role in 2012 when I was first elected to the school committee. Over the years, I have enjoyed seeing the town grow and prosper and feeling a sense of pride that I play a small part in that.

I was on the school committee when we supported critical policies that focused on building the town's financial reserve leading to our triple A rating. More recently, I was on the school committee that steadied the ship with the hiring of Jim Adams as our superintendent. I enjoy being part of the leadership team and contributing to the stability and forward progress of our schools and town.

After a year of being either remote or in a hybrid schedule, our students are just now returning to school in-person, full-time. This presents a unique opportunity to re-think how we configure our school day. With state and federal school funding coming, there's an opportunity to think creatively of how to invest those funds and I welcome the opportunity to continue to influence how we invest in our future.

It is an honor to be a part of the stewardship of the Ashland

Public Schools. I hope you will support my candidacy for the Ashland School Committee, and allow me to continue to contribute to the steadiness and forward progress of our schools.

Tina Fitanides

My name is Tina Fitanides and I am running for a seat on the Ashland School Committee. My husband and I have lived



in Ashland for 17 years and have two children currently attending Ashland Public Schools. I have been an active volunteer in our school district for years, serving on various Site Councils as well as the District Reorganization Task Force, the SEL Parent Advisory group, and more recently Ashland Residents for Equity & Action.

Professionally, I am an attorney and have spent my career advocating for vulnerable children and families in various capacities with the bulk of my career being spent in education policy and advocacy. As a Policy Analyst at the non-profit Massachusetts Advocates for Children, I spent a more than a decade working on policy issues concerning special education, teacher licensure and training, equity in education, creating supportive school environments, early literacy, school funding, state budget advocacy, and other issues. I currently work as an advocate/attorney assisting families as they advocate for their children within the special education system. My personal and professional experiences have deepened my knowledge on many issues related to creating and maintaining high quality, efficient, equitable, and compassionate schools for

students, staff, and families.

I decided to run for School Committee because I have a passion for education, enjoy working with stakeholders to collaboratively address challenges, and want to give back to the community in a more substantive way. Ashland is a wonderful town with many strengths, among them a high-quality school system filled with dedicated professionals. Being a member of the School Committee would afford me the opportunity to add my voice and experience to the important conversations and decisions surrounding our schools and add a fresh perspective to a dynamic group of professionals.

My vision is to bring my knowledge of educational policy and student learning needs, together with my collaborative approach to decision making and problem solving to the table to further the mission of our district and build upon the strengths of the Ashland Public Schools to continue to meet the needs of all students, families, and staff.

Marc Terry

My name is Marc Terry, and I am seeking re-election for a third term on the Ashland School



Committee. In my six years serving in the role, I have contributed to many initiatives and programs that have improved the Ashland Schools. I hope to have the opportunity to continue to serve the schools and town.

As a parent of two school-aged children, with a commitment to community service, and 20+ years of professional experience as a school lawyer, I bring multiple perspectives and expertise

to the School Committee. This includes community leadership, a personal desire to ensure all children receive the best possible education and expertise in negotiations, policy and best practices in school management.

In the past six years, the Ashland schools have made tremendous progress. We addressed our initial space needs by adding classrooms to the Warren School. The work of the Space Needs Committee led to what will be a new elementary school to replace the Mindess School, thanks to the support of the Ashland community. We implemented free full-day kindergarten for all students, giving everyone an equal and better start to their education. We modified start times at the middle and high school to align with the science that shows that teenage students are more successful when school starts later.

We have also improved students' opportunities for success by expanding elective opportunities at the high school, increasing support for the social/emotional growth of all students and adding support for students of all abilities and backgrounds. Significantly, we have done this by adopting and implementing sustainable budgets year after year.

Moving forward, I will continue to advocate for changes that improve opportunities for all students. Among my priorities are to make the Ashland schools a leader as an anti-racist school district.

I hope that by my service over the past six years I have demonstrated the value of my leadership. I ask for your vote on May 18 so I can continue to serve our community. Please check out Marc Terry, Ashland School Committee on Facebook.



Affordable JUNK REMOVAL
You Don't Lift a Finger!

We beat ALL competitor pricing.
774-287-1133
DUMPSTERS AVAILABLE

LET US CLEAN OUT YOUR UNWANTED JUNK
Serving Metro-West and Beyond!

<p>\$25 off a full truck if you mention <i>local town pages</i> <small>Not to be combined with any other offer</small></p>	<p>\$299 15 Yard Dumpster <small>Not to be combined with any other offer</small></p>
---	--

SEE WEBSITE FOR DETAILS

AffordableJunkRemoval@gmail.com
<https://affordablejunkremoval.com/>



Ashland POWER WASHING

Maintain & Preserve Your Home & Property

Siding • Decks • Stairs • Walks • Roofs • Driveways



Call to schedule
508-514-9900



Matt Gamache
Realtor

Serving Ashland for over 10 years



Call for a market analysis

508.561.2757
www.MattGamache.com

TOWN NEWS

continued from page 3

To raise funding for innovative projects, AEFI is holding its first virtual campaign. Join the campaign by donating on the AEF



The Town Forest Committee is seeking volunteers in May to grade soil and plant a rain garden at the new Oak Street Town Forest entrance. (Photo/supplied)

Ashland Cultural Council, the Cable Advisory Board, Ashland Council on Aging, and the Valentine Property Committee. For a complete list, visit www.ashland-mass.com/448/Volunteer-Opportunities. To apply for any one

website, www.ashlandeducation.org.

Volunteer Opportunities

The town of Ashland has openings on a number of boards and committees, including the

of the openings, complete the Talent Bank Form on the town website, bit.ly/2OAhfLL.

GreenUp Ashland: Town-wide Cleanup, May 1-2

GreenUp Ashland will hold its town-wide cleanup event the weekend of May 1-2. Covid-19 guidelines will be in place. Residents, groups such as scouts and civic organizations, and businesses may register on the GUA website, www.greenupashland.org. For more information, visit the GUA website or Facebook page, www.facebook.com/GreenUpAshland. (Photo/supplied)



Ashland Business Beat

BY CYNTHIA WHITTY

ABA Calendar Preview

The Ashland Business Association is setting its calendar for 2021 with a mix of virtual and in-person events. Check the ABA website for any changes to the schedule. For up-to-date information and to register for events, visit ashlandbusinessassociation.com/events. Events for the summer months include:

- A two-part, online event with members of the Metrowest Chamber of Commerce. Kevin Kuros of the Massachusetts Office of Business Development will answer questions on funding options for businesses. His segment will be followed by speed networking among attendees. May 20, 5:30 p.m.
- A casual in-person business networking event at The Corner Spot's "Open Mic Night." June 10, 5:30 to 7 p.m.
- The ABA will sponsor a Summer Concert at Stone Park. Admission is free. ABA members are invited to set up booths to display products or provide activities for kids. July 13 (tentative date), 5:30 to 7 p.m.

A Summer BBQ at the YMCA

Outdoors Center in Hopkinton. ABA members will mingle with business professionals from Holliston, Hopkinton, Sherborn, Marlborough and the Metrowest Chamber of Commerce. For members only. August 3, 6 to 8 p.m.

New Business Opening

Bigfoot Pizza, 119 Pond St. (Rt. 126), serving pizza, burgers and more. Located in the Excel gas station. 11am-10pm Sun-Friday; 11am-9 pm Saturday. 508-383-5098

Outdoor Dining

The Select Board has approved the following restaurants for outdoor dining for the season: Mazi, Los Cabos, Mexico City, Ashland Ale House, Erica's Ristorante, TJ's Food and Spirits. The following restaurants will continue to have permanent outdoor dining: Stone's Public House, Oregon Club and Murphy's Eats and Treats.

The Corner Spot Opening

The Corner Spot, a community gathering place for pop-up shops and community events at 6 Cherry St., will open, following Covid guidelines, for the season. For up-to-date information on activities and events, visit www.thecornerashland.com and www.facebook.com/thecorner-spotashland. Spring events are:



- The Ashland Dog Park Committee is holding a spring fundraiser, "Bring Your Pup for Family Fun Day," May 8 (rain date is May 15), 9 a.m. to 2 p.m. The committee welcomes well-behaved, leashed dogs that can be around food, children, loud noises, and other dogs. For more information, visit www.ashlanddogpark.com or email AshlandDPC@gmail.com.
- The Zelus Brewing Company's "Beer Garden" is scheduled for May 21 to 23: Friday, 5pm-8:30pm; Saturday, 12 pm-8:30pm; and Sunday, 12pm-8:30pm.
- The official Corner Spot opening is set for June 5 at 3 p.m. and will feature David Garden Band, Joey's Cannolis, Refreshin' Concessions Ice Cream Truck, Imagine That! Face Painting, and more.

VETERINARY CARE for your companion

Our veterinarians provide personalized, compassionate care



PREVENTATIVE MEDICINE, VACCINATIONS, SPAY & NEUTER, EXAMS AND CONSULTATIONS, PUPPY AND KITTEN CARE, SURGICAL CARE

Call us today to schedule an appointment!



FREE First Visit for Dogs and Cats

Dogs 12 months or older, cats 6 months or older

New clients only with this ad. Expires 4/30/21

508-231-1223

300 Eliot Street, Ashland

www.thefamilypethospital.com

Medicine • Surgery • Exotics • Retail • Cat Friendly Certified
Doggie Daycare • Dog Training • Grooming • Medical Boarding

Your Money, Your Independence

If your taxes could talk, what would they say?

Get your taxes done?

You have until May 17th to complete and find out what they say about you. Specifically, what are you doing well and can be done better?

If you don't know, ask your accountant. If he/she can't answer, maybe it's time to get help with tax planning from a Certified Financial Planner (CFP).

A CFP's goal with tax planning is to help clients take proactive steps to save money on their taxes now and help reduce liabilities in the future. Aspects include lowering your AGI (adjusted gross income), leveraging tax deductions, taking advantage of tax credits, tax deferrals and timing of large purchases, sales and realization of income.

Once you're exhaled from completing your taxes, see if these apply for 2021:

Dedicate space to a home office. If you're self-employed or started a side-gig, dedicate a section of your house as a home office. Schedule C deductions are many and prorated across several aspects of expenses, maintenance and utilities on your entire home. Additionally, if you build or renovate a home office, there are additional deductions if you're self-employed.

Working From Home (WFH) becoming permanent. Is your company changing your role to WFH indefinitely, providing flexibility to move to another state? Understand workers are required to have taxes withheld in accordance with their state's tax rules, regardless of where their employer is located. Also, some states make employers withhold taxes from nonresident employees' wages.



Glenn Brown

Adjust your W-4. If you got a large refund, lower your withholding and do more with your money than letting the government sit on it. Additionally, if both spouses work and one is self-employed, consider raising

your W-4 withholding to avoid potential penalties for underpaying estimated taxes on a growing small business.

Exercising Restricted Stock Units (RSUs). Did you sell some RSUs and get a large tax bill? Connect with HR to discuss withholding options before your next exercise. Also, learn of the benefits and drawbacks of converting to stock to qualify for long-term, instead of short-term, capital gains.

Revisit Work Benefits. You can impact your adjusted gross income (AGI) through 401k contributions as well as funding a HSA funding, FSA for dental/vision or FSA dependent care. Additionally, you may want to choose Roth instead of Traditional to eliminate future tax liabilities. If you can't make some changes until open enrollment,

don't forget if you have a life event (new child, spouse loses or changes job) you have 30 days to revisit and reset your work benefits.

Tax planning is complex, but it doesn't need to be complicated. Work with someone to help you save money, stay organized and reduce liabilities in the future.

The opinions voiced in this material are for general information only and are not intended to provide specific advice or recommendations for any individual.

Glenn Brown is a Holliston resident and owner of PlanDynamic, LLC, www.PlanDynamic.com. Glenn is a fee-only Certified Financial Planner™ helping motivated people take control of their planning and investing, so they can balance kids, aging parents and financial independence.

Ashland Innovation 4-H Club Members Practice Teamwork, Garden Basics

By CYNTHIA WHITTY



Members of the Ashland Innovation 4-H Club held a workday at Ashland Community Gardens at Stone Park, where they practiced teamwork and learned gardening basics. In early spring, just in time to welcome gardeners, club members removed weeds from a high raised bed and one in-ground bed and vines from the chain link fence, and swept away leaves and debris. Participating club members that day were Anish Meruva (10), Aarav Sanghavi (10), Anish Muthyala (10), Hasini Meruva (8), Siddhant Pawankar (10), and Sreemithra Ambati (8). Club leaders are Venkata Subbaiah Meruva Thirupaiahgari and Sandya Rani Meruva Thirupaiahgari. Club mentors are Ramprasad Bodicherla, Sukesh Sabbani, and Krishna Joginpalli. For more information on the club, visit www.facebook.com/ashlandinnovation4Hclub or email ashlandinnovationclub@gmail.com.

Federated Church of Ashland

Thrift Shop

Federated Church of Ashland
118 Main Street

Wednesdays - 9:00 AM – 7:00 PM
AND
Saturdays - 9:00 AM – 2:00 PM

Lots of Hidden Treasures
Clothing - Jewelry - Books - Toys
Household Goods - Vintage Items

Federated Church of Ashland
118 Main Street
In-Person Worship Services
– Sundays @ 10 AM
Also available Live on YouTube FCOA

Looking to advertise your business?

Contact Jeremy: 413-204-5296
jeremywardwell@localtownpages.com

Want financial independence?

Are you building with:

- Fee-only Certified Financial Planner™
- Strategies for budget, cash flow & debt
- Low-cost investments ■ Growing income streams
- Maximizing work, government & health benefits
- Tax planning ■ Insurance analysis ■ Estate planning
- College savings for kids ■ Care for elderly parents

We help you take control of planning and investing, so you can balance kids, aging parents and financial independence.



Glenn Brown,
CFP®, CRPC
508-834-7733
www.PlanDynamic.com



PlanDynamic, LLC is a registered investment advisor. Please visit our website for important disclosures.

PREMIER IMAGE GALLERY

- ♦ Specializing in Museum Quality Framing
- ♦ Finest Selection of Original Artwork by Local Artists

Celebrating 30 Years as a family owned business

290 Eliot Street, (Ledgemere Plaza) • Ashland • (508) 881-4730

 www.premier-image.com

Contact Jeremy at 413-204-5296 or at jeremywardwell@localtownpages.com to advertise your business!

\$25 OFF **CLEANOUT COUPON** **\$25 OFF**

ONE COUPON PER CLEANOUT. *\$100 MINIMUM.

JUNK it NOW! us

PRO-JUNK-REMOVAL

ONE ITEM OR MULTIPLE TRUCK LOADS

"We empty - the Junk Bag"
(3 cubic yards) Call for Price

Buy at store - Fill it - We empty & Leave it

Homes • Apartments • Businesses • Yard waste
Pools • Boilers • Hot Tubs • Sheds Removed • Appliances

* Fully Insured * Call Tom Cassidy

We junk cars, trucks, vans, boats, RVs, campers, etc..

\$25 OFF **1-855-533-JUNK (5865)** **\$25 OFF**

1-508-308-2279 (Cell) www.junkitnow.us

ASHLAND HOME IMPROVEMENT

GUTTER CLEANING & SNOW PLOWING

CARPENTRY • INTERIOR & EXTERIOR PAINTING

- Window & Door Replacement
- Kitchen & Bathroom Remodeling
- Wood Flooring • Decks • Siding
- Roofs • Masonry • Power Washing
- Gutter Repairs & Cleaning
- Basement Finishing

Detailed & Meticulous Reasonable Rates

Call Mauricio

508.202.8602 **FULLY INSURED** **MA HIC.#169427**



WE CAN TAKE CARE OF ALL YOUR JUNK REMOVAL NEEDS!

Servicing Norfolk County & MetroWest and other parts of Massachusetts

FREE Estimates - Prices Given Upfront • NO HIDDEN FEES



75 Exchange Street Holliston, MA
Call Matt: (774) 244-2020
treasuretrovejunkremoval.com

774-244-2020

What will be in Your Bag? Save the Date for the "Drive-Buy" Book Sale, June 6

BY CYNTHIA WHITTY

The Friends of the Ashland Public Library will hold a "Drive-Buy" contact-free book sale in the Montenegro Square parking lot across from the library on Sunday, June 6, 1 to 3 p.m. Hard or soft cover books will be packaged in sealed paper bags; the contents of each will be a surprise. All books are gently used and in good condition, and every bundle is guaranteed to hold hours of entertainment for pandemic-weary readers.

"Since we had such a successful first 'drive-buy' sale in December, we decided to do it again," Jan Poppendieck, Friends' book sale coordinator, said. "People were happy to have a safe activity to go to, and were more than happy to support our great library. Customers loved the idea of taking home a bundle of surprise books while supporting a good cause."

Once again, bags will be pre-packaged according to genre, including fiction, biography/memoir, history and politics, health and family living, cookbooks, and sports. In addition, there will be a large variety of children's selections packaged according to age. DVDs, CDs, and audio books will also be included.

Adult bags of books and audio books will contain at least six titles; children's bags will have at



least 10 titles; and CD and DVD bags will contain 10 items per bag. All bags will be sold for \$5 each, cash only. Due to the nature of this sale, no exchanges or refunds are possible.

Following the Ashland Library practice of quarantining returned books for three days, bags will be packed and sealed at least three days prior to the sale.

Customers will drive through the parking lot and select their genres. A volunteer will load the bags directly in the trunk or back seat of the car. A cashier will collect the cash payment through the driver's window on the way out of the parking lot.

Once bags arrive home, cus-

tomers can empty the contents, discard the bags, wash hands, and feel assured they have safely brought home a selection of unique and entertaining titles without ever leaving the safety of their car.

Proceeds from the book sale will support library programming, such as craft kits for children and adults, online family support programs, and acquisition of materials to meet the needs of the community. For changes in date due to inclement weather, visit the Friends' Facebook page, www.facebook.com/FriendsoftheAshlandPublicLibrary.

KILKELLY MASONRY

QUALITY DESIGN & CRAFTSMANSHIP



**Chimneys • Fireplaces • Fire Pits • Pool Patios
Patios • Steps • Walkways • Walls • Veneers**

www.kilkellymasonry.com
(508) 328-0210

FREE ESTIMATE UPON REQUEST

Ashland at 175 Years

By CYNTHIA WHITTY

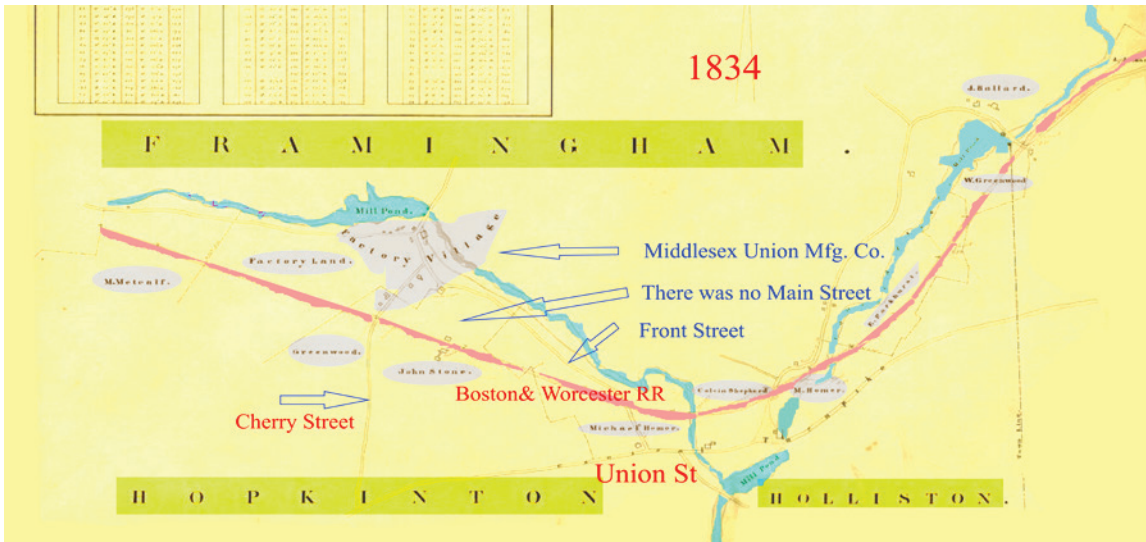
This year marks Ashland’s 175th year as a town. Its official founding date is March 16, 1846. Ashland Local Town Pages asked Historical Society President Cliff Wilson how Ashland became a town.

“The main driving force was the arrival of the Boston & Worcester train on September 20, 1834,” Wilson said. “At that time, most of the property in today’s downtown Ashland was farm land owned by John Stone and Michael Homer, and the cotton manufacturing mill owned by the Middlesex Union Manufacturing Co., of which James Jackson was President. Calvin Shepard owned a paper mill at the foot of Fountain Street. John Stone’s son was the surveyor for the railroad. Knowing that the train was coming, Stone built a hotel and a new home adjacent to the tracks. With the arrival of the train, local businesses had the ability to easily ship their products to Boston and abroad as well as import labor from Boston to work in the mills. Michael Homer’s son Charles, who married John Stone’s daughter, Maria, began building homes along Front Street as well as the house now located at 98-100 Main Street. The boot and shoe business developed as well as the manufacturing of combs. The area known as Hopkinton Factory Village or Unionville, named after the Middlesex Union Manufacturing Co., started to boom.”

Multiple Attempts Made
“Businesses began to develop outward from the center in land that belonged to Holliston and Framingham. It became difficult for the businesses to work with one another as they often had to obtain permits from their respective Town Halls, each approximately six miles away. James Jackson spearheaded the initial attempt for creating a new town that would encompass parts of Hopkinton, Framingham, and Holliston. He petitioned the state legislature in 1837 to create the new Town of Unionville. The petition failed due to objections from the three towns.”
“Reverend Joseph Havens, Jr. the second pastor of the local

church joined James Jackson in a second attempt in 1838. Again, a new township was rejected. As evidenced by an overlay of the proposed map of 1837 over the first official map of Ashland in 1854, a lot of behind-the-scenes discussions must have occurred. The shape of the proposed town had different boundaries. The most notable was the Phipps and Fairbanks land in Hopkinton, which today would include parts of Weston Nurseries and Legacy Farms was not included in the third attempt.”

“However, land in the area around today’s Hopkinton Reservoir was added in the third attempt in 1846 as well as some additional Framingham land. Perhaps, the border changes and the side deals with the opposers would be enough to get the third petition passed. A last-minute change in the third petition was a brilliant political move. The majority of the members of the Legislature were ardent supporters of Presidential contender, Henry Clay, whose estate in Kentucky was named Ashland. Documents show that in the third petition, the name Unionville is crossed out and the name Ashland is written in. The third petition passed in the Senate on a vote of 20-8 and Gov-



The arrival of the Boston & Worcester train on September 20, 1834, spurred on the creation of Ashland. (Photo/supplied)

ernor George N. Briggs signed the enactment and Ashland was incorporated effective March 16, 1846.”

100 Years
“The town celebrated the 100th year with a huge parade, events at Stone Park, followed by fireworks. (See the YouTube video, <https://bit.ly/31Paybs>.) For the 150th, there was a costume ball at the American Legion in March, an encampment at the Middle School in May, a time capsule was placed at the library in June, a Native American Pow Wow at Stone Park in August, and an Ashland Day parade and fireworks in September. I have not found any

evidence of any events for the 25th, 50th, 75th, or 125th, but that does not mean that none took place.”

12 Concord St Holliston, MA

Phone Orders 774-233-1966

GRAB-N-GO SPECIALS

Pizza | Paninis | Subs | Sandwiches
Burritos | Tacos | Salads

7 Days a week!

WE DELIVER to Holliston, Hopkinton & Ashland

Curbside Pick Up

Cornering the Market...on DELICIOUS!

The Corner Market



Timothy Daniels House



Exceptional Short-Term Rehab & Skilled Nursing Care

◆ Physician on Site

◆ Short Term Rehab

◆ Physical Therapists On Site

◆ 24 Hr Nursing Coverage

◆ Respite Stays Welcome

◆ Hospice Services

(508)429-4566

84 Elm Street, Holliston, MA

www.rehabassociates.com/timothydaniels



NEW ENGLAND REGLAZE

Don't replace your old tub, reglaze it! Tubs, tile sinks and much more

NOW \$299.00

SAVE \$100 WITH AD

We do any TUB!

CALL US NOW 617-895-7771

www.newenglandreglaze.com

Reg. \$399

Color, travel, may apply.



Ashland Farmers Market 10th Season Preview

By CYNTHIA WHITTY

The Ashland Farmers Market, when it opens June 12, will mark its 10th season. The market will bring to downtown every Saturday, June through October, fresh, locally grown produce; baked goods; fish and meats; eggs and cheese; coffee; wine and mead; specialty and ready-to-eat foods; pet foods; and local arts and crafts. AFM's grand opening is Saturday, June 12, 9 a.m. to 1 p.m. at 125 Front St., on the grass diagonally across from the Ashland Public Library.

Over the years, the farmers market has served as a meeting place for families and neighbors. Some of the many special events that have made AFM a favorite destination include live music, shaded picnic areas, food demos, Indian Cultural Day, Thai dance performances, Farm Day, Dog Day, tomato tasting, craft demos, Kid's Corner, Green Living Day, local dance and sport school performances, Harvest Festival, and Pumpkin Painting Day.

AFM matches Supplemental Nutrition Assistance Program (SNAP) up to \$20 and offers Healthy Incentives Program (HIP) benefits for produce.

For more information and to be added to the AFM email list, visit www.AshlandFarmersMarket.org.
Photos/courtesy AFM



ANYTIME FITNESS

Spring Into Fitness

OPEN 24 Hours
Personal & Group Training
Hydro Massage Bed

JOIN TODAY!

Shaws Plaza
309 Pond St · Ashland, MA
508-881-4900

Anytimefitnessashland@gmail.com



Support Local Business!

The Hopkinton Chamber of Commerce is sponsoring the First Annual Hopkinton Restaurant Week May 14 – 23, 2021. Take advantage of delicious deals, specials and prizes at participating

pandemic.

Support Local! To find out more about Restaurant Week and the participating businesses go to hopkintonrestaurantweek.com.

Yes We're **OPEN**

BACK to BUSINESS

Coming July 2021
Space reservation: June 1

The landscape of business as we know it has dramatically changed, but now we are starting to shift gears and open back up. Local Town Pages offers an outlet for business owners with *Back to Business* - a cost effective and strategic way to place your business back in the mind of consumers.

Reach more than 80,000 homes this July!

Reserve your space today by contacting
Jeremy Wardwell at 413-204-5296 or by email
at jeremywardwell@localtownpages.com

localtownpages



HOPKINTON RESTAURANT WEEK 2021

MAY 14-23

Gift    

HOPKINTON CHAMBER OF COMMERCE

SHOP LOCAL

SUPPORT YOUR LOCAL BUSINESSES



ing restaurants. All restaurants will be offering indoor and some will be offering outdoor dining options, with many offering take out and delivery service! Take advantage of this opportunity to sample area restaurants and win Gift Certificates to the participating restaurants! Restaurants have been one of the hardest hit industries during the COVID-19

The Hopkinton Chamber of Commerce is a non-profit organization committed to serving its members by supporting and advocating for an environment where members and their communities prosper, and to operate as a facilitator, convener, and partner to promote business well-being and economic growth.

Sports

Ashland Girls Soccer Anxious To get Back onto The Field

By CHRISTOPHER TREMBLAY,
STAFF SPORTS WRITER

Approximately one year ago the high school spring sports sea-

quad-captains seniors Sarah DaSilva, Patrice Musoke and Emily Flynn, as well as junior Chloe Roberts. While tryouts



Captains (left to right): Chloe Roberts, Sarah DaSilva, Emily Flynn and Patrice Musoke

son was about to get underway, but then the world encountered Covid, and everything was turned upside down.

Katie Blasi, the Ashland girl's lacrosse coach, was preparing for tryouts when she found out there would be no season this year.

"Last year we were ready to go and then Covid shut things down a week before we were to begin," the Clocker Coach said. "While we couldn't play, I tried to keep the girls engaged throughout the season with zoom sessions."

What would have been her first year on the job Blasi had to wait a full year before actually getting onto the field with her new team. In addition to coaching youth and club lacrosse (Laxachusetts Central), prior to taking the head coaching job at Ashland, Blasi was the junior varsity field hockey coach, so she is familiar with a lot of the crossover athletes.

"I want to spend a lot of time building this year as there are a lot of new girls as well as new coaches," she said. "There are 13 seniors interested in playing this year including the eight returning varsity players."

Leading the Clockers back onto the field this spring will be

were not scheduled to begin until the end of April, the Clocker Coach is not exactly sure who else will be on the team when they open the season in early May.

"At this point I'm not exactly sure where the captains will be playing this season. I do know they have all been instrumental in getting the rest of the girls to workouts and preparing for the season with Covid protocols in place," Blasi said. "I've been told there has been a really good attendance by the girls at practice. Everyone is not only ready but more than excited to get back onto the field and play."

Since last season was cancelled before anything could take place, Blasi has had to rely on game tape from 2019 and although it is almost two years old at this point, she has been encouraged by what she has seen.

"Ashland has a good youth lacrosse program, and it has translated to the high school level where the team is very athletic," the Head Coach said. "We have a lot of lacrosse players that participate in other sports, so I've been

ASHLAND SOCCER
continued on page 13

Nichols College Football Program Is TVL-friendly

By KEN HAMWEY
STAFF SPORTS WRITER

Nichols College in Dudley has 11 players from the Tri Valley League on its football roster for 2021. A coincidence? Far from it.

Dale Olmsted, who has been directing the Bison for eight years, coached in the TVL for nine seasons at Millis High where he compiled a 27-7 record in his final three seasons and guided the Mohawks to three straight playoff appearances. He also was selected Coach of the Year five times — twice by *The MetroWest Daily News*, twice by coaches in the TVL Small Division, and once by *The Boston Globe*.

The 52-year-old coach, who has lived in Walpole for 43 years, not only knows the TVL's players, but he has also developed strong relationships with the circuit's coaches. And living in Walpole makes it easy for Olmsted to travel to all 12 of the TVL's venues.

The schools include Medway, Bellingham, Millis, Dover-Sherborn, Dedham, Norwood, Ashland, Hopkinton, Norton, Westwood, Medfield and Holliston.

Olmsted is bullish on other conferences, like the Hockomock League and the Bay State Conference, but top-notch players from the TVL who commit to Nichols seem to adjust to the college quickly.

"Players from the TVL have a blue-collar work ethic," Olmsted said. "They're also fundamentally sound and many of them compete for traditionally strong programs."

Olmsted has another reason why the 55-year-old league is ripe with potential prospects for Nichols. "We're a small college (1,325 enrollment)," he said. "So, it's comforting for players who compete for small schools in the TVL to choose a college that's small. TVL players see comfort in choosing Nichols because its size isn't overwhelming."

Josh Pierre-Charles, an all-star running back from Millis, is a great example of a small-school halfback jelling at Nichols. He's been a dominant Division 3

player.

"Josh's career statistics are so good that the Houston Texans and Washington's football team came to Nichols in February to check him out," Olmsted said. "He's a senior who'll play in the fall, graduate in December, and possibly earn a pro-day invitation

"Josh is old-school and his work ethic is relentless," said Olmsted. "He's got speed, strength and excellent field vision. An explosive back, his hand-eye coordination enables him to catch passes consistently. Solid physically, he's a very durable back who relies on swivel-hip moves."



Star running back Josh Pierre-Charles and coach Dale Olmsted both have Millis roots that extend to Nichols College.

before next year's NFL draft.

The 5-foot-10, 195-pound Pierre-Charles is third in career rushing at Nichols with 1,858 yards. He's fourth in rushing attempts (350) and third in career touchdowns (15).

Following is a capsule look at the other 10 TVL players on Nichols' roster:

JOSH JONES (junior, defensive end) — A 6-foot, 230-pound

NICHOLS FOOTBALL
continued on page 13

Do you suffer from Pelvic Floor Dysfunction?

Schedule your appointment with a pelvic floor therapist:

- **Weak pelvic floor muscles** can lead to urine loss with coughing/laughing, urinary urgency, & organ prolapse
- **Tight pelvic floor muscles** can lead to pelvic pain, constipation, painful intercourse, & tailbone pain

Men, women, & children all have pelvic floor muscles located at the base of the pelvis. ALL are treatable.

All major insurances accepted
PLATINUM
PHYSICAL THERAPY

508-881-6750

15 West Union Street, Ashland
1 Lumber Street, Suite 201, Hopkinton
196 E. Main Street (in Gold's Gym), Milford
www.platinumptma.com

We're Not In Bedrock and You're Not with The Flintstones

BY DENNIS SULLIVAN & ASSOCIATES,
COUNSELORS AT LAW

You may recall the popular television show of the 1960's "The Flintstones" who lived in the town of Bedrock. It happened to be the first-ever prime-time cartoon show. Here, Fred's biggest concerns were staying on the good side of his wife Wilma and avoiding getting tackled by his pet dinosaur Dino when he came through the door. Today, however, life in this COVID-19 World isn't as simple.

The word "Bedrock" also means strength. Being strong is something we all want to achieve. One way of getting there is to view your life in three facets such as depicted on a pyramid. The pyramid, as we view it, represents our **health, finances, and legacy**. Beneath this pyramid is the **bedrock of our core values**: the fundamental beliefs we hold dear. These guiding principles dictate our behavior and help us know the difference between right and wrong. Ideally, we share our core values with our loved ones. However, during this past year, core values have sometimes taken



a back seat to the topsy-turvy COVID-19 landscape. Principles and beliefs, while still important, can get lost in the mere challenge of navigating through COVID-19 restrictions, sickness, and turmoil. Likewise, career, finances, relationships, and yes, our mental and physical well-being in general have been jumbled. Worry and fear have become the norm for many. **Are you one of the many who have suffered through sleepless nights?**

Nevertheless, beneath all of this, you still have your bedrock of core values. This is where we can help in making sure you stay on a straight path in your health,

financial and legacy pyramid, despite all you have been through.

As we enter the second year of Covid-19, we're here to help you explore and share your core values with loved ones. We offer **unique discovery counseling opportunities** with proven health, life,

disability, estate, and asset protection planning processes to help guide you successfully through the COVID-19 landscape and other challenges you and your family may face. This is achieved through our new proprietary, peace of mind, **Legacy Planning System**. It protects you for life, and most importantly passes on your core values and legacy for generations that follow. As you document your core values, you will **uncover what's most important to pass on** to those who follow in your footsteps for generations to come. Your legacy can be a fantastic legacy to pass along! It is prudent, today more than ever, to protect your health, home, spouse, family, life savings, and legacy. In these continued

times of COVID-19, you owe it to yourself and those year hold dear. Don't let this Bedrock opportunity pass you by!

Book a FREE online discovery session today. You'll discover why 90% of all trust and estate plans fail as well as what you can do to protect your health, home, spouse, family, legacy, and life savings. **Call 800-964-4295 NOW** or visit www.DSullivan.com to register for a Free Discovery Session! You will even qualify to **receive up to \$2,475 in valuable benefits** to update your trust and estate plans for the new Covid-19 world and build your own value-based legacy to guide future generations.

Dennis Sullivan & Associates is a team of caring, compassionate, experienced professionals who Protect Families for Generations.

BUSINESS MARKETING TECHNICAL ASSISTANCE GRANT

A new opportunity provided by the Town of Ashland, City of Framingham, and the Town of Natick.

Made possible with funding from the Baker-Polito Administration Regional Pilot Project Grant Award to Support Economic Recovery

This grant pairs consultants with businesses to improve marketing efforts and increase sales.

Businesses can choose from the following consultant services:

- Marketing Assistance
- Website Design
- Social Media
- Point of Sale Implementation



DEADLINE May 3, 2021 at 5 pm

Submit Applications to Beth Reynolds by emailing breyolds@ashlandmass.com

Learn more: ashlandmass.com/831/Grant-Opportunities



THE ESTATE PLANNING & ASSET PROTECTION LAW CENTER OF
DENNIS SULLIVAN & ASSOCIATES
LIFETIME PROTECTION FOR YOUR FAMILY

**PROTECTING HEALTH, HOME, SPOUSE, FAMILY,
LEGACY & LIFE SAVINGS FOR GENERATIONS**



PROPER PLANNING PREVENTS

- Time & money wasted on probate
- The government controlling decisions for your family
- Public exposure of your personal affairs
- Losing your life savings to nursing home costs
- Completely unnecessary Mass Taxes
- Surprises on the elder care journey

TO RECEIVE YOUR FREE DISCOVERY SESSION AND PERSONALIZED CONSULTATION CALL 781-237-2815

Trust & Estate Planning • Elder Law & Medicaid
Probate & Trust Administration



781-237-2815

www.DSullivan.com



The Candy Cottage

Holliston's Hometown Candy Store

NUT FREE • DAIRY FREE • GLUTEN FREE

Chocolates for
Mother's Day

Truffles • Turtles • Fudge • Gift Baskets

44 Central Street, Holliston

(508) 429-5544

www.hollistoncandycottage.com

Wed.-Sat., 10-5 curbside pickup and delivery available

NICHOLS FOOTBALL

continued from page 11

lineman, Jones played at Bellingham High where he was a TVL all-star and a team MVP. As a Nichols sophomore, he played in all 10 games, compiling 18 tackles and 2 sacks as a positional third-down player. "Josh has a good sense of the game," Olmsted said. "He's got quick hands and feet, his football IQ is high and he's got lots of potential."

ELIJAH BROWN (sophomore, defensive end) — The 6-2, 240-pounder played at Dedham where he was a TVL all-star. As a Nichols freshman, he saw action in five games. "Elijah is very coachable, a great kid who's got size and strength," Olmsted said. "His ceiling is high. We expect him to keep progressing and be a prime contributor in the future."

HAYDEN OLMSTED (sophomore, center) — The coach's son, he initially attended Sacred Heart University in Fairfield, Conn., where he was a walk-on freshman. The former Millis High all-star, however, transferred to Nichols and now is a projected starter. The 6-foot-2, 285-pound center should get more opportunity with the Bison. "Hayden moves well, is adept at reading defenses, has a high football IQ and has experience calling the blocking schemes," Olmsted said.

SHAMAR HALL (freshman, halfback) — A two-year starter at Westwood, the 5-foot-11, 210-pounder was used primarily as a blocking back. "Shamar is strong physically, a good athlete with good hands," Olmsted noted. "We'll utilize him on short-yardage situations. He's kind of like James Devlin, who was used primarily as a blocker by the Patriots."

DAVID HARDING (freshman, defensive end) — The 6-foot-1, 225-pounder enjoyed a superb senior year at Holliston High. "David had a great playoff game against Stoughton," Olmsted said. "We project him as an end on defense. He's got a strong work ethic, he's crafty and quick. He'll bulk up and we see him doing good things in the future."

MARK JAMES (freshman, cornerback) — The 5-foot-11, 175-pounder was a three-year starter at Westwood where he was a captain and TVL all-star. "In pre-season, Mark was the most athletic freshman among our defensive backs," Olmsted said. "He's confident, competi-

tive, quick and has good height."

JUSTIN KELLEY (freshman, linebacker) — The 6-foot,

msted said. "They'll be learning experiences and if we win them, we'll know we're heading in the



Josh Pierre-Charles is third in career rushing with 1,858 yards at Nichols College where he is being scouted by the NFL.

200-pounder was a quality linebacker at Dedham High. Olmsted projects him as a reserve middle linebacker but has high expectations for him moving forward. "Justin has good instincts and a nose for the ball," he said. "As a freshman, he'll play on special teams but he should be in the rotation eventually. He's got a bright future."

ETHAN MEISNER-NELSON (freshman, linebacker) — The 5-foot-10, 185-pounder, who played at Norton, will see action on special teams but Olmsted believes he'll be a starter eventually at outside linebacker. "Ethan has a great attitude," he said. "A solid player, he moves well and is athletic."

KYLE MORAN (freshman, guard) — The 6-foot, 220-pound lineman played at Medway High. "Kyle is a bit undersized," Olmsted noted. "But, he's a hard-worker who will progress. Dependable and reliable, he's a very coachable player from a good program."

CHRISTOPHER RYAN (freshman, wide receiver) — The 6-foot, 180-pound Ryan was a TVL all-star and a team MVP at Holliston High. "We expect a lot from him immediately," Olmsted said. "He's got strong hands, he's quick, athletic and runs good routes. His hand-eye coordination enables him to be top-notch receiver."

Nichols has a three-game schedule for this spring but Olmsted is using the abbreviated season to gauge his squad for a 10-game season in the fall. "The three games are important," Ol-

Nichols in both teams' openers on April 18, three days after Local Town Pages deadline.

"We'll contend for the title in the fall," said Olmsted, who twice has been named Worcester Area Coach of the Year. "We'll be competitive. We finished 6-4 in 2019 and we've played at .500 or better in three of our last four seasons."

Olmsted, whose career record at Nichols is 21-39, leans on a balanced offense that focuses on a run-pass option. "That's how we'll approach opponents if we have the talent," he said. "We may also employ a pro-style offense."

The attributes Olmsted prefers in prospective players are high character, mental toughness, size, speed, strength, leadership and a high football IQ. He also likes to recruit players from traditionally strong programs.

The 2021 recruits from the TVL no doubt give Nichols' grid program many of those traits. After all, five of the last six Super Bowls have been won by TVL squads (Millis and Holliston two each and one for Ashland).

ASHLAND SOCCER

continued from page 11

able to watch them via live stream to get an understanding of their athleticism."

Currently the upcoming abbreviated season's schedule has not been released yet, but it looks as though the Clockers will be in battle for 15 regular season games as well as a Sectional Tournament. It is still unknown that if there will be a State Tournament.

Under the guidance of Blasi, the Clockers are looking to earn a spot in the Sectional Tournament this upcoming season.

"Our team has not been involved in tournament play in several years," the Coach said. "I had sent out a questionnaire and a lot of the girls noted that they wanted to get back there. With the Sectionals back it gives them the possibility and something to shoot for."

While it has been sometime since the girls have been able to pick up their sticks and play lacrosse for their high school, they are more than ready to get things going.

Celebrate your Graduate!

The Class of 2021 has experienced the most unusual senior year of our lifetimes!

▽ Hybrid Learning

▽ Spring Football

▽ Face Coverings

Send them a Congratulations and Send Off they will never forget!

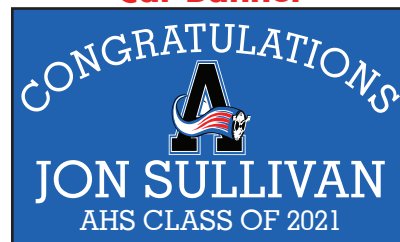
Door Banner



30" x 72" Vinyl Banner with grommets for hanging.

from \$45

Car Banner



5' x 3' Vinyl Banner with grommets for hanging or attaching

from \$40

Yard Sign



36" x 24" Coroplast sign, single sided with H-Stake.

from \$25

TO ORDER:

1. Visit www.ourtownpublishing.com
2. Select from our great customizable offerings from our graduation products page.
3. Upload your high resolution photo.
4. Fill out credit card information.
5. Choose pick-up in Medway or ship direct.
6. Surprise your Grad!

If you are a photographer interested in offering these unique products to your clients, let's chat!

Our Town PUBLISHING

Home of localtownpages.com

For more information or group pricing, contact Andrew Carini at andrew@ourtownpublishing.com.

May is Mental Health Awareness Month

By Kristin French, Director of Prevention Outreach/DAET; Jen Cutler, Director of Counseling & SEL, APS; and Jennifer Wuelfing, Director of Human Services.

Mental Health Awareness Month was established in 1949 to increase awareness of the im-

portance of mental health and wellness in Americans' lives, and to celebrate recovery from mental illness. Each May, communities across the U.S. observe Mental Health Awareness Month through programs, education, and events that seek to reduce

stigma around mental health and promote opportunities to celebrate health and wellness.

Ashland's Human Services Department, Ashland Public Schools, and Ashland's Decisions at Every Turn Coalition are joining efforts to share supportive resources and bring attention to mental health.

This past year has presented many different challenges and obstacles that tested our strength and resiliency. The global pandemic forced us to cope with situations we have never imagined, and many of us struggled with our mental health as a result. The good news is that there are tools and resources available that can support the well-being of individuals and communities.

That's why this Mental Health Month, we are working together to highlight #Tools2Thrive, created by Mental Health America, to provide tools and strategies that individuals can use throughout their daily lives to prioritize mental health, build resiliency, and continue to cope with the obstacles of COVID-19. During the month of May, we will be sharing



resources on different topics that can help process the events of the past year and the feelings that surround them, while also building up skills and supports that extend beyond the pandemic.

Throughout the year, people who had never experienced mental health challenges found themselves struggling for the first time. Many of us faced challenging situations that we had little to no control over. If you found that it impacted your mental health, you are not alone. In fact, of the almost half a million individuals that took the anxiety screening at MHAScreening.org, 79 percent

showed symptoms of moderate to severe anxiety.

There are practical ways that we can all use to help improve our mental health. By focusing on small changes, we can move through the stressors of the past year and develop long-term strategies to support ourselves on an ongoing basis.

A great starting point for anyone who is ready to start prioritizing their mental health is to take a mental health screening at MHAScreening.org. The screening is a quick, free, and confidential way for someone to assess their mental health and begin finding hope and healing. We want to remind everyone that it is OK to ask someone for help.

There are local resources available to anyone needing this additional support. Jennifer Wuelfing, MSW LICSW, Ashland's Director of Human Services/Town Social Worker can be reached at 508-532-7942 or jwuelfing@Ashlandmass.com. Jen Cutler, MS, CAGS, M.Ed, Director of Counseling and Social-Emotional Learning for Ashland Public Schools can be reached at 508-532-4015 or jcutler@ashland.k12.ma.us.

Mental health is an important part of our overall health. Recognizing a pathway to positive mental health and wellness is unique to each of us and can be a life-long journey. By developing your own #Tools2Thrive, it is possible to find balance between life's ups and downs and continue to cope with the challenges brought on by the pandemic.

Some resources: Tools2Thrive Tools & Resources: ashlanddecisions.org/wp-content/uploads/2021/04/Tools2ThriveToolkit.pdf; Mental Health America: www.mhational.org

Vision Care for Life. You'll see the difference.



Dr. Lauren LaPaglia
Optometrist

ASHLAND FAMILY EYECARE

- Adult & Pediatric Eye Exams
- Contact Lens Fittings
- Medical Eye Conditions & Urgent Care

contact@ashlandfamilyeye.com
25 West Union St., Ashland, MA
(508) 928-7300 ashlandfamilyeye.com

WIN BIG!



SCAN ME

One entry per day/per person. Contest open May 1 - 20, 2021

WITH OUR GIFT CARD GIVE-A-WAYS!

Explore our new website
ashlandtownnews.com
and enter to win a
\$100 gift card to

Winner will be chosen at random and posted on facebook.com on May 21.

MUFFIN HOUSE CAFE
Hopkinton • Mendon • Medway • Natick

**Congratulations to our April Winner:
Melanie Lewis**

Greater Ashland Lions Club



We've only just begun! Spring has arrived, the flowers and trees are in bloom, the birds are singing as we Greater Ashland Lions are ready to start a new chapter (being vaccinated) ready to do what we do best — SERVE our family, friends and our Community.

On April 12, the Greater Ashland Lions sponsored a Grab and Go Lunch at the Ashland Community Center where 50 individuals took home a meal to enjoy. Thank you.

High School Scholarships

Parents, Grandparents and High School Seniors please be aware that this year as in the past the Greater Ashland Lions will be awarding scholarships to further education to students from Ashland High School, Joseph P. Keefe Technical School

are encouraged to apply, applications may be obtained at the Guidance Department.

Arbor Day

Arbor Day was celebrated on April 30, at the Ashland Mindless Elementary School with each 4th-grade student given a Norway Spruce seedling to take home and plant. This year our seedlings were purchased through the Massachusetts Tree Wardens' and Foresters Association (MTWFA) that sponsor an annual packaged seedling program. The seedlings have become a popular Arbor Day promotion to promote municipalities, garden clubs, businesses and the Greater Ashland Lions Club. The proceeds from the seedling program support the MTWFA Scholarship Fund. Scholarships are awarded annually in March to students enrolled in arboriculture and urban forestry programs statewide. The seedlings arrive a few days before distribution and the Greater Ashland Lions package each seedling in a container for traveling home with students.

Arbor Day/Earth Day take place each year in April and is an annual event that encourages tree planting and on-going tree care, it is a day to celebrate the importance of trees and

promotes the benefits that trees provide for people and our environment. For more information contact Lion Ellie 508-875-4513.

Duck slide race

Looking ahead the Greater Ashland Lions will be holding their Annual Duck Slide Race, Porchetta in October, a night with an Italian Meal with music just to mention a few.

Pull tab donations

A total of 100 pounds of pull tabs have been to delivered Shriners this month—

Thank you! Since 1989, Shriners of America and the Masonic Lodge have been collecting pull tabs as part of a collection and recycling program known as Tabs-for-Tots, the money earned is to benefit purchase of medical and non-medical items for the Shriners Hospitals for Children, including the hospital in Springfield, Mass. And Boston, Mass. Contact Lion Ellie for info. 508-875-4513.

Recycle your eyeglasses

Please recycle your used eyeglasses, prescription and non-prescription, hearing aids, pull tabs from soda cans, soup and pet, beer etc. And clip those coupons for education they all add 10cents each help us with programs for schools. Join us and learn more about The Greater Ashland

Lions contact Lion President Mary at 508-881-5515.

Submitted: Lion Ellie Torelli

Send us an e-mail, And we will add you to our email list Or follow us on Facebook Additions to our schedule and special events go out via email first And then on to Facebook		May 15 th Fertilizer & Critter Control Hosta Hosta
May 29 th Waterlilies, Hyacinths, & Aquatic Iris Hosta	June 12 th Tropical Waterlilies Hosta	
June 26 th Lotus Hosta	July 24 th Daylilies Hosta	
August 21 st Fragrant Hosta Hosta	September 11 th Ornamental Grasses & Fall Fertilizer Hosta	

The Hosta Farm of Mendon
 52 Bates St - Mendon, MA
 hosta_farm@yahoo.com
Only open to the public these 7 Saturdays.
 8 am - 4 pm
 We have over 350 Varieties of Hosta
 And a whole lot more!!!
 Save this ad as a reminder of what is flowering for each day.

Real Estate Corner



CORDAVILLE
REALTY




Cordaville Realty is thrilled to announce our fundraising campaign for
Ashland's Bark Park!

For every home our firm sells in Ashland in 2021, Cordaville Realty will
 donate **\$1000** to the Bark Park.



Contact **Jen Paratore** at
 Cordaville Realty today!
 Jen@cordaville.com
 617.974.7079

Ashland Bark Park Committee is a non-profit organization supporting the building of a dog park in Ashland. | EIN#83-4588763



Direct: 508.989.0181
 Fax: 508.744.6991



10 West Central Street
 Natick, MA 01760

Email: BillGath@gmail.com
 Web: www.BillGath.com

Bill Gath
 Sales & Rentals

**WANT YOUR PERFECT PROPERTY
 To Come To You?**
 Visit www.BillGath.com
 On the top right click "New Listing Email Alerts"

- ✓ Receive daily emails of new listings in your criteria.
- ✓ Select up to 5 towns per email address
- ✓ Change your search criteria at anytime.
- ✓ Property information and pictures right to your inbox.

Call: 508.989.0181 Email: BillGath@gmail.com

For rates and info on advertising your business, please call
 Jeremy at 413-204-5296 or email: jeremywardwell@localtownpages.com

Opening Summer 2021

NOW ACCEPTING RESERVATIONS

SALMON
HEALTH & RETIREMENT
THE WILLOWS | WHITNEY PLACE

SALMON at Medway is a 55+ community that combines active living and assisted living/memory care on one campus. This modern approach to senior living allows seniors and their families the ability to choose one “community” that will serve them throughout their golden years. Moving to a senior living community is a decision that *can* and *should* be made just once.

508-533-3300
MedwaySeniorLiving.com


@SALMONatMedway

Join Us for Complimentary Virtual Events

Stop by our campus for an in-person visit or join us online for one of our virtual events, it's all complimentary!

Fun Food Friday | May 7, 4, 21
Stop by anytime from 9 am – 12 pm for complimentary Muffin House Café muffins & coffee

From Our Family...to Yours Virtual Events
Visit us online to view and register for our robust calendar of complimentary virtual events, from Social Media for Seniors to Cocktail Classes & more!

SALMON
HEALTH & RETIREMENT
THE WILLOWS | WHITNEY PLACE

508-533-3300 | MedwaySeniorLiving.com

@SALMONatMedway 



Internationally-acclaimed Mixologist



Ricky Roo & Friends



Acupuncturist/Energy Healer