






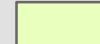
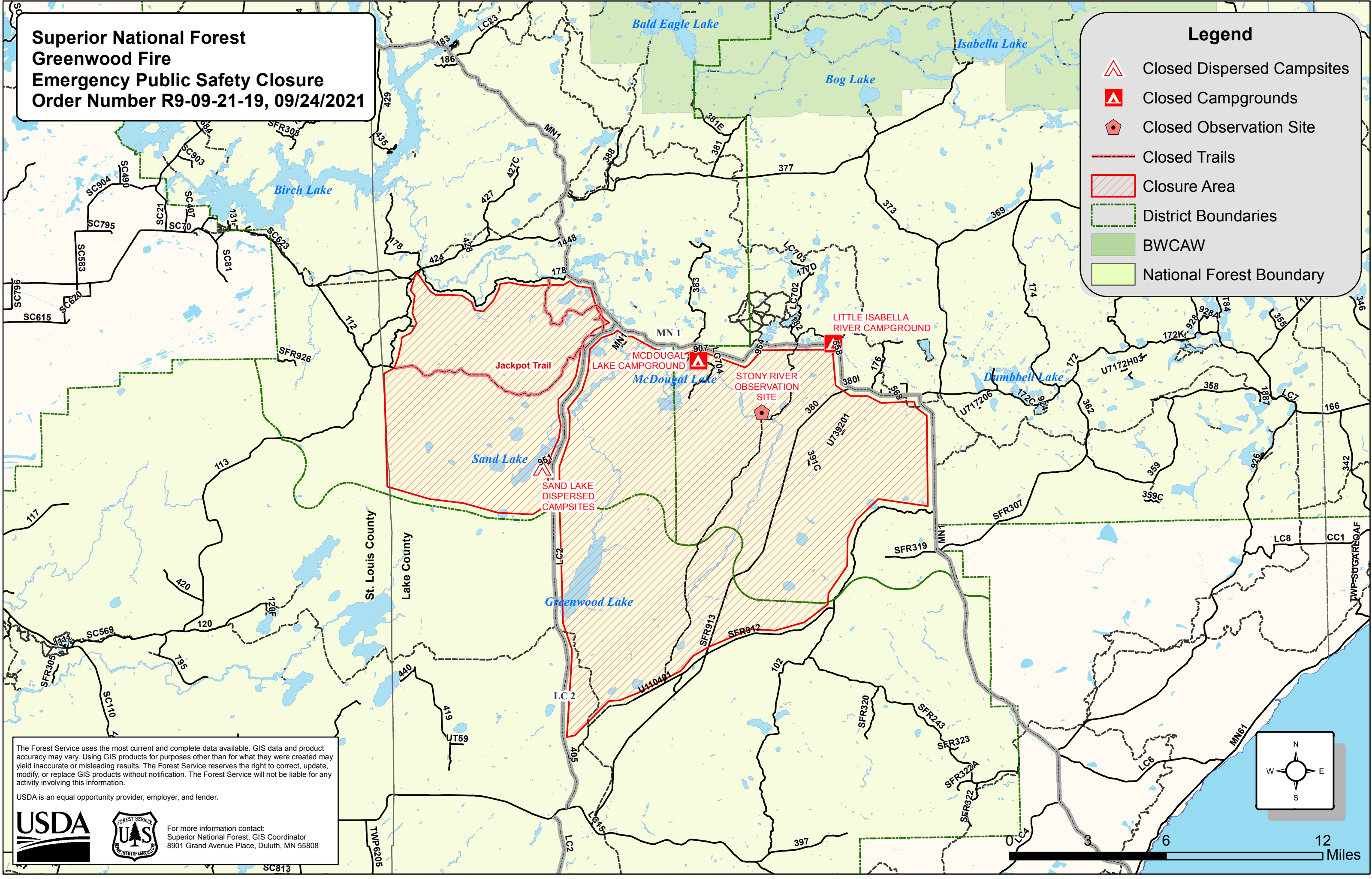


**Superior National Forest
Greenwood Fire
Emergency Public Safety Closure
Order Number R9-09-21-19, 09/24/2021**

Legend

-  Closed Dispersed Campsites
-  Closed Campgrounds
-  Closed Observation Site
-  Closed Trails
-  Closure Area
-  District Boundaries
-  BWCAW
-  National Forest Boundary



The Forest Service uses the most current and complete data available. GIS data and product accuracy may vary. Using GIS products for purposes other than for what they were created may yield inaccurate or misleading results. The Forest Service reserves the right to correct, update, modify, or replace GIS products without notification. The Forest Service will not be liable for any activity involving this information.

USDA is an equal opportunity provider, employer, and lender.



For more information contact:
Superior National Forest, GIS Coordinator
8901 Grand Avenue Place, Duluth, MN 55808

